

STELLAR AGGRESSOR™

138-215 Mid-Size OTR



The Stellar Aggressor 138-215 MS (Mid-Size) OTR series features a rugged, heavy duty 15' steel OTR service body with over 80 cubic feet of storage. The user friendly design with the front mounted vertical compartments are standard. Each underbody compartment comes with slide top doors equipped with stainless steel automotive style slam latches.

The 138-215 MS OTR can be equipped with either a model 4500 or 6000 hydraulic knuckleboom crane. These cranes are both operated by a standard fully proportional radio remote control.

The main storage compartment houses the 3/8" and 1/2" hose which are top mounted up and out of the way, along with the FLR (filter, lubricator and regulator) and a 12 volt trouble light reel.



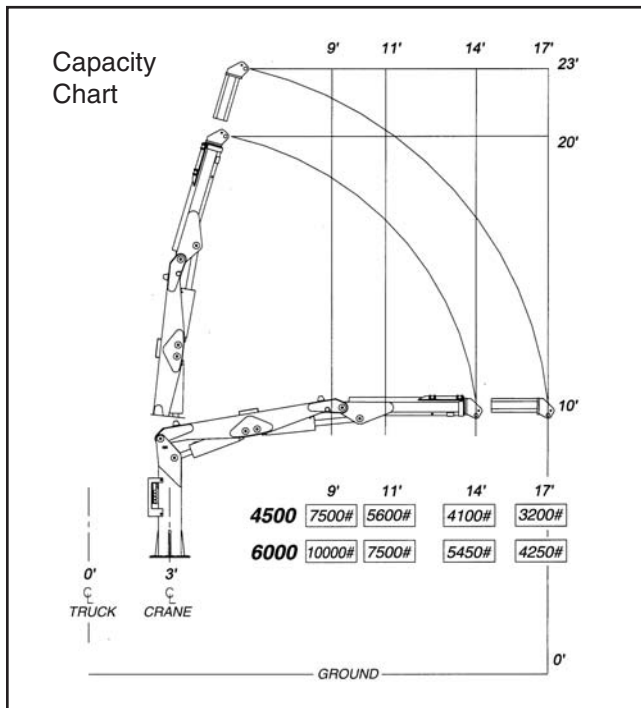
The SHD-66DD direct-driven hydraulic-drive air compressor is mounted on the crane base. The model SHD-66DD direct drive hydraulic air compressor is a 4-cylinder, 2-stage compressor with a 100 cubic inch displacement and an output capacity of 46 CFM @ 175 PSI. The crane boom is stored in travel position in a unique crane saddle, which will ease wear and tear on the turntable bearing. The location allows for cool, clean, fresh air intake, and easy maintenance and serviceability. The SHD-66DD carries a 2-year warranty because of these features.

Designed & Manufactured
in the USA

STELLAR
INDUSTRIES INC.

138-215 Mid-Size OTR Series

| Specifications | 4500 | 6000 |
|---|---|--|
| Crane Rating | 45,000 foot/pounds | 60,000 foot/pounds |
| Standard Boom Length | 11 foot from CL of Crane 14 foot from CL of Truck | 11 foot from CL of Crane 14 foot from CL of Truck |
| Boom Extension | Hydraulic 32 inches | Hydraulic 32 inches |
| Max. Horizontal Reach | 14 foot-from CL of Crane 17 foot-from CL of Truck | 14 foot-from CL of Crane 17 foot-from CL of Truck |
| Rotation | 290 degree power (worm gear drive) | 290 degree power (worm gear drive) |
| Lifting Capacities <i>(from CL of truck)</i> | 7,500 lbs. @ 9 foot 5,600 lbs. @ 11 foot 4,100 lbs. @ 14 foot 3,200 lbs. @ 17 foot | 10,000 lbs. @ 9 foot 7,500 lbs. @ 11 foot 5,450 lbs. @ 14 foot 4,250 lbs. @ 17 foot |
| Power Supply Required | PTO & Pump (5 gpm @ 2800 psi) | PTO & Pump (6 gpm @ 2850 psi) |
| Controls | Proportional Radio Control Standard | Proportional Radio Control Standard |
| Stowed Height <i>(above truck frame)</i> | 71 inches | 75 inches |
| Mounting Space Req. | 32 inches | 32 inches |
| Approx. Shipping Weight | 2,400 lbs. | 3,150 lbs. |



The passenger side vertical compartment is set up to house a five gallon fresh drinking water cooler & work clothes storage.

