

## Elliott Exclusive Features

Elliott leads the industry with the range of standard and optional equipment offered on its BoomTrucks. Features that improve efficiency, safety, control and performance – to save you time and money.



### VARIABLE DISPLACEMENT PISTON PUMP™

A pressure compensated hydraulic pump delivers flow only on demand, reducing excessive heating of the hydraulic oil while increasing fuel economy. This pump enables multi-function capabilities available only in larger cranes.



### DYNASMOOTH CONTROL VALVE™

This internal pilot operated valve produces unequalled smoothness and control of each function. It allows for precise control with the electronic controllers in the seated control station, and enables clean installation of optional radio remote controllers.



### THUMB THROTTLE™

This type of throttle provides for more efficient crane operation and decreased fuel consumption with the variable displacement hydraulic pump. By not having a foot throttle, the operator experiences less fatigue.



### FRICTION FREE JIB EXTENSION™

A unique roller design allows for one man to extend and retract the pull-out section. All Elliott jibs can accommodate an optional two man gravity leveled basket on the end of the extended section.

## Built To Fit

Connect with an Elliott engineer to design a machine to your exact specifications. Our complimentary Built to Fit program makes it possible – improving productivity on the jobsite, eliminating the expense of renting or purchasing additional equipment and allowing you to recover the cost of your investment more quickly.



**BoomTruck™**  
TRUCK-MOUNTED CRANE

**ELLIOTT**  
EQUIPMENT COMPANY

**Built for You.**

4427 South 76th Circle  
Omaha, NE 68127-1806  
Tele: 402-592-4500  
Fax: 402-592-4553  
E-mail: [info@elliottequip.com](mailto:info@elliottequip.com)

[www.elliottequip.com](http://www.elliottequip.com)

E&OE  
© 2007 Elliott Equipment Company

**BoomTruck™**

TRUCK-MOUNTED CRANE

MODEL 4000 SPECIFICATIONS



**ELLIOTT**  
EQUIPMENT COMPANY

**Built for You.**

# Model 4000.

Our 40-ton boom truck offers an industry leading capacity chart at a 9 ft. radius, and the flexibility of a commercial chassis. Full-span, mid-span, and retracted span charts are standard, to provide you with the adaptability you need for your application. The 105' boom and optional 49' jib allow for vertical reach of up to 164'. A configuration is even available to mount the 40105R on a 3-axle commercial chassis.

STANDARD FEATURES	
- LMI Load Moment Indicator	- Full-span / mid-span / retracted span capacity chart
- Internal boom hard wire anti-two block	- Ground operated outrigger controls
- Continuous rotation	- Variable speed thumb throttle
- Front bumper stabilizer	- Glide swing w/ manual foot brake
- Proportional boom extension	- Aluminum bed wings
- Two-speed winch	- Rear bumper underride protection
- Rotation resistant wire rope	- Hydraulic oil cooler
- Winch drum tensioner	- Horizontal boom rest
- 12V power outlet at control console	- One hard copy and one CD operator manual
- Cup holder at control console	- 1-year parts and labor and 5-year structural warranty

OPTIONS	
- Air conditioning (crane cab)	- Radio remote controls
- Steel gravity-leveled two man basket	- Line blocks
- 2-piece jib	- Toolboxes
- Automatic rotation lockout	- Vertical line block holder
- Auxiliary winch	- Swing counterweight

## Specifications

	40105R	H40105R
<b>PERFORMANCE</b>		
Lifting Capacity	80,000 lbs.	80,000 lbs.
Crane Weight	38,200 lbs.	38,200 lbs.
Jib Lengths	49'	49'
Maximum Vertical Reach	164'	164'
Operator Controls	Operator Cab	Operator Cab

WINCH		
Speed	2	2
Winch Type	Planetary	Planetary
Bare Drum Pull	15,000 lbs.	15,000 lbs.
Single Line Pull	10,000 lbs.	10,000 lbs.
Line Speed (4th layer)	162/325 fpm	162/325 fpm
Wire Rope Length	430'	430'
Wire Rope Size	5/8"	5/8"
Breaking Strength	56,420 lbs.	56,420 lbs.

HYDRAULICS		
Pump Sections	1	1
Pump Type	Piston	Piston
Gallons per Minute	70	70
Reservoir	143 gallons	143 gallons

OUTRIGGERS		
Front Type	OUT-DOWN	OUT-DOWN
Front Spread	26'2"	26'2"
Rear Type	OUT-DOWN	OUT-DOWN
Rear Spread	26'2"	26'2"
Front Bumper Stabilizer	Required	Required

Crane weights include crane turret, boom, subbase, front and rear outriggers, front stabilizer, boom rest, and reservoir (w/ oil)\*

All designs conform to ANSI B30.5. Welding conforms to AWS D1.1. All testing will conform to SAE 1063 and SAE 765 specifications.

### BOOM

4-section 105' proportional boom. 33'9" retracted to 105' extended length. Four-plate construction with re-enforced side plates. Anti-friction wear pads. Extension with double acting hydraulic cylinder and cable crowd system. Boom working range of -10 degrees to 80 degrees. Boom nose tip shall contain one upper sheave and three lower sheaves

### OUTRIGGERS

Two sets of out-and-down type outriggers with 26'2" extended full span. Additional 21' mid-span and 7' fully retracted span. 22' diameter ball socket removable aluminum pads that stow on outrigger legs. Ground-operated outrigger controls located on each side of unit under aluminum bed wings to provide independent control. Front bumper stabilizer (requires extended front frame extension).

### CONTROLS

Seated controls with operator cab that rotate with turret. Operator cab to include sliding door, two air circulation fans, deluxe cloth operator seat, electric control levers in seat console, variable speed thumb throttle, Load Moment Indicator (LMI) console display, tinted glass windows, front window and top window wipers, sliding side window, diesel heater, engine start/stop switch, boom angle indicator, lifting capacity chart, range diagram, signal horn, 12V DC power supply, and cup holder. Includes glide swing with manual foot brake.

### HYDRAULICS

Closed center system. Piston pump direct mounted to PTO on truck chassis transmission providing 70 gpm of flow. 143 gallon hydraulic oil reservoir mounted on top of front out-and-down outriggers. Hydraulic reservoir shall include sight/temperature gauge, return filter, and gate valve. Hydraulic oil cooler mounted on boom rest.

### WINCH

Two-speed planetary winch with 15,000 lb. bare drum pull. Mounted at base of boom with 430' of 5/8" diameter rotation resistant wire rope with 10,000 lb. line pull. Optional auxiliary winch mounted to back of main winch. Includes winch drum tensioner. Winch is powered by hydraulic motor and include integral load holding brake. Internal hard-wire anti-two-block.

## Chassis Specifications

**40105R**

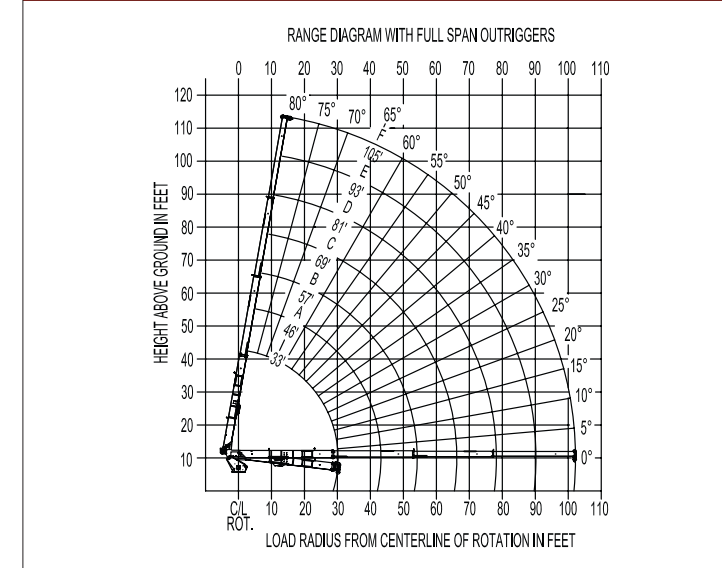
Wheelbase (WB)	256"	GVWRR	46,000 lbs.
Cab-To-Axle (CT)	192"	Int Front Frame Ext.	Required
Afterframe (AF)	147"	Frame Section Modulus	30.0 @ 110,000
GVWR	66,000 lbs.	RBM	3,300,000
GVWRF	20,000 lbs.		

**H40105R**

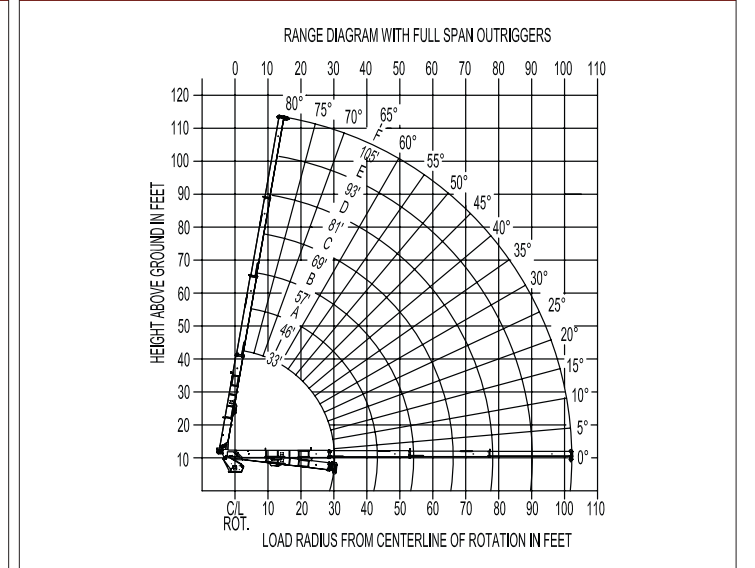
Wheelbase (WB)	271"	GVWRR	60,000 lbs.
Cab-To-Axle (CT)	198"	Int. Front Frame Ext.	Required
Afterframe (AF)	147"	Frame Section Modulus	30.0 @ 110,000
GVWR	80,000 lbs.	RBM	3,300,000
GVWRF	20,000 lbs.		

Each chassis must be reviewed specific to the configuration and options that are selected. The 40105R and H40105R capacity charts are differentiated by chassis stability weight requirements. The bare weights of chassis and/or counterweight will determine which chart can be used based upon stability. The wheelbase, cab-to-trunnion, and afterframe specifications are recommended only. Actual requirements will be based upon several factors, including number of axles, bare weight of chassis, and options selected for crane. Special permits may be required, dependent upon the state the crane will be operating. Pusher axle or tag axle configurations will be based upon meeting federal bridge laws as well as state requirements.

### RANGE CHART



### RANGE CHART



### LOAD CHART

MAIN BOOM LOAD RATINGS WITH FULLY EXTENDED OUTRIGGERS															
MAIN BOOM LOAD RATINGS															
LOAD RATINGS IN LB WITH FULLY EXTENDED OUTRIGGERS AND STABILIZERS EXTENDED															
LOAD RADIUS IN FEET	LOADED BOOM ANGLE	A	B	C	D	E	F								
	33-R	46-R	57-R	69-R	81-R	93-R	105-R								
9	72.6	80,000													
10	70.4	64,500	76.5	46,600											
12	66.4	58,100	73.9	46,600	77.9	46,600									
15	60.2	50,800	70.0	46,600	74.9	44,600	78.4	41,700							
20	48.5	39,700	62.7	38,900	69.3	36,500	74.0	34,900	77.2	30,700					
25	33.5	30,000	54.8	31,000	63.5	31,100	69.5	29,500	73.4	26,100					
30			45.7	24,600	57.1	23,600	64.6	24,000	69.5	22,600					
35			34.7	17,900	50.1	17,900	59.3	18,350	65.3	18,000					
40			17.8	14,200	42.4	14,200	53.8	14,700	60.9	15,000					
45					33.2	11,500	47.9	12,000	56.4	12,300					
50					21.7	9,400	42.0	9,700	52.0	9,900					
55							34.5	7,950	46.8	8,150					
60							24.9	6,500	41.2	6,750					
65								34.8	5,600	45.6	5,750				
70								26.9	4,800	40.6	4,750				
75								15.2	3,800	35.0	3,950				
80									28.4	3,250	40.3	3,200			
85									19.5	2,700	35.3	2,600			
90											29.7	2,100			
95												22.5	1,650		
100													10.7	1,200	
0	18,500	0	11,500	0	7,500	0	4,900	0	3,200	0	2,000	0	1,000		
DEDUCTIONS FOR STOWED (lb)	1,000		750		600		500		400		350		300		

### LOAD CHART

MAIN BOOM LOAD RATINGS WITH FULLY EXTENDED OUTRIGGERS															
MAIN BOOM LOAD RATINGS															
LOAD RATINGS IN LB WITH FULLY EXTENDED OUTRIGGERS AND STABILIZERS EXTENDED															
LOAD RADIUS IN FEET	LOADED BOOM ANGLE	A	B	C	D	E	F								
	33-R	46-R	57-R	69-R	81-R	93-R	105-R								
9	72.6	80,000													
10	70.4	64,500	76.5	46,600											
12	66.4	58,100	73.9	46,600	77.9	46,600									
15	60.1	50,800	69.9	46,600	74.9	44,600	78.4	41,700							
20	48.5	39,700	62.7	38,900	69.3	36,500	74.0	34,900	77.2	30,700					
25	33.4	30,000	54.8	31,000	63.5	31,100	69.5	29,500	73.4	26,100					
30			45.7	24,600	57.2	25,200	64.7	25,500	69.5	22,600					
35			34.8	18,900	50.3	18,350	59.5	19,700	65.5	19,700					
40			17.9	14,900	42.5	15,300	53.9	15,600	61.1	15,900					
45					33.3	12,400	48.0	12,700	56.5	13,000					
50					20.1	10,100	41.5	10,500	51.7	10,750					
55							34.6	8,800	47.0	9,050					
60							25.0	7,200	41.4	7,600					
65								34.9	6,400	45.9	6,600				
70								27.1	5,450	40.9	5,600				
75								15.3	4,500	35.2	4,700				
80									28.6	3,950	40.6	4,100			
85									19.7	3,300	35.7	3,450			
90											29.7	2,100			
95												22.8	1,650		
100													11.0	1,800	
0	18,500	0	11,900	0	8,150	0	5,450	0	3,900	0	2,500	0	1,000		
DEDUCTIONS FOR STOWED (lb)	1,000		750		600		500		400		350		300		

Elliott BoomTruck specifications subject to change. Counterweight may be required for stability.