

TGS Balers

The TGS line of balers offers high production and versatility make it a profitable performer in virtually any scrap yard. It uses a three-compression baling system and has the widest range of bale sizes from 5"x5"xV to 24"x24"xV.

It processes soft alloys of stainless sheet, factory clips and skeletons, shapes, wire, tubing, non-ferrous metals (copper wire, low alloy aluminum sheet, etc).



TG Balers

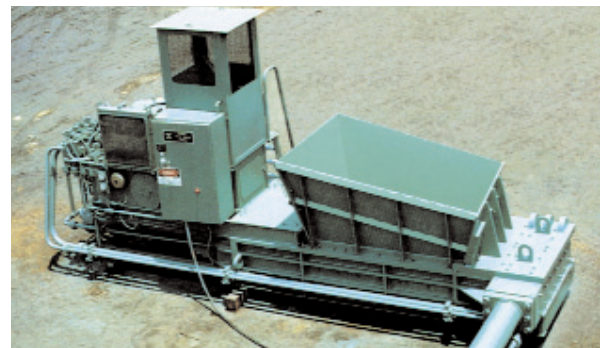
The TG line of balers produce high density, uniform bales that meet all industry standards. It precompresses material into the charging box with a massive lid and utilizes a three-compression baling system to produce a bale. The TG line is perfect for companies that need a heavy-duty, reliable baling system. **Harris TG balers are the most preferred balers in the industry.**

It processes slitter coils, industrial clips, skeletons, steel mill sheet, automobiles, railroad boxcar sides and roofs, selected structural steel, wire, and reinforcing rods.

TCS Balers

The TCS baler is a compact, economic, versatile baler. Stationary and mobile versions are available. It produces 16" x 16" x V bales.

It processes non-ferrous metals and selected ferrous metals.



Typical Customer Applications

- | | |
|-----------------|--|
| Shears: | Auto Manufacturers, Auto Dismantlers, Scrap Processors, Steel Mills, Can Plants, Foundries, and Smelters |
| Ferrous Balers: | Auto Manufacturers, Auto Dismantlers, Scrap Processors, Steel Mills, Can Plants, Foundries, and Smelters |
| Shredders: | Auto Manufacturers, Auto Dismantlers, Scrap Processors, and Steel Mills |



Sales

800-373-9131 • 770-631-7290
770-631-7299 (Fax)

Harris Parts & Service

800-710-4994 • 912-273-8688 (Fax)

200 Clover Reach Drive, Peachtree City, GA 30269

M99010

Revised 4/04

Harris



Ferrous Balers, Loggers, Shears, Shredders

SHEARS SHREDDERS



Harris BSH Guillotine Shears

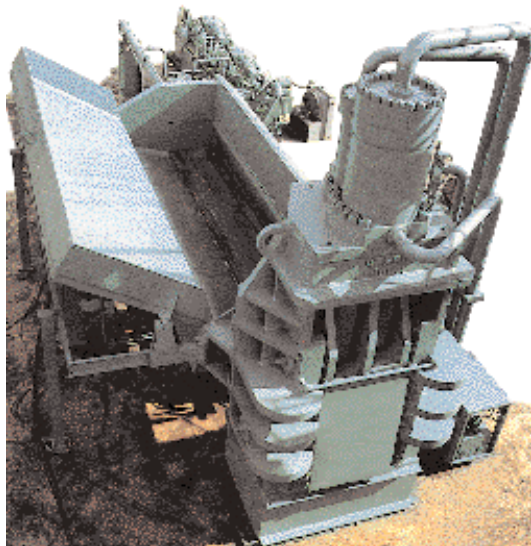
Featuring the patented "Tuck-&Fold" compression box, which densifies the material before shearing, the Harris BSH shears are available in capacities of up to 2,200 tons. The "Tuck-&Fold" compression box reduces pre-processing time with no or minimal torch cutting operations, allowing fast feeding and great production. BSH shears are available with throat widths of 3' to 5' (.9m to 1.5m).

Other exclusive features include external gib and knife adjustments, Harris cylinders, a wide-open charge hopper for fast loading of irregular scrap, an easy-to-service power pack, and Teflon-protected pistons for minimum friction and more hours of trouble-free operation. It processes auto scrap, steel mill scrap, selected freight car and ship sections, shapes, pipe, plate, no. 2 heavy melting scrap, and selected no. 1 heavy melting scrap.

Harris Side-Squeeze (SS) Shears

The Harris SS Shear with lid is designed to confine and compress scrap utilizing a fully guided side compression system. It provides maximum productivity through continuous, efficient production while requiring only limited maintenance due to simplicity of operation. The SS Shears are available with throat widths of 2' to 5' (.9m to 1.5m) and shearing forces ranging from 700 to 2200 tons. Other exclusive features include external gib and knife adjustments and Harris cylinders.

It processes steel mill scrap, pipe, plate, pipe, plate, selected freight car and ship sections, no. 2 heavy melting scrap, and no. 1 heavy melting scrap.



Harris ABS Shears

Developed with an emphasis on economy, the Harris line of ABS shears has proven to be fast and economical, meeting the needs of scrap processors around the world. Offered in 550, 800, and 1000 ton models, the ABS employs a unique concept in design; a pre-compression charging box in which one half of the box opens to accept scrap, and the other half remains rigid with the "Tuck-and-Fold" flipper. All this plus the dependable, heavy-duty construction found in more expensive shears makes the ABS shear a wise choice for any yard.

Other exclusive features include external gib and knife adjustments, Harris cylinders, an easy-to-service power pack, and Teflon-protected pistons for minimum friction and more hours of trouble-free operation. It processes steel mill scrap, shapes, pipes and plate, no. 2 heavy melting scrap, and selected no. 1 heavy melting scrap.

BALER/LOGGER/SHEARS



The **E** Harris Series *Harris designed the E series to be best Baler/Logger/Shear in the industry.*

GS Baler/Logger/Shear

The Harris Global Shear line of baler/logger/shears is one of Harris' product lines designed to fulfill the requirements of the electric arc furnaces. The GS Shear comes in 500, 700, 900, and 1100 ton shearing capacities. They include a clamshell type box with higher side compression force designed for better trapping. To bale or log, the GS has up to 226 tons of baling force. The GS is equipped with the new Harris advanced hydraulic system utilizing flooded suction pumps and is fast with decreased cycle times and increased productivity.

H-700-E Baler/Logger/Shear

The Harris Side-Squeeze baler/logger/shear with 215-tons of Ram-Face pressure has the most baling force of any 700-ton baler/logger/shear on the market. These Harris manufactured machines include Harris cylinders, external gib and knife adjustment, stall protection, and heavy-duty construction.

It can process shearing: miscellaneous scrap, select #1 & #2 scrap, shapes, plate, and pipe. It can process baling/Logging; miscellaneous scrap, white goods, auto fenders, etc., factory clips and skeletons.



Harris Shredders

Harris metal shredders include the HS6090, HS80115, HS98115, and HS125115 models which are 60-, 80-, 98-, and 125-inch hammer swing shredders, respectively. Features include patented, reversible hood, back wall castings, and fully interlocked fabrication. Available in 2000-7000 horsepower, Harris shredders have full system capabilities. Harris shredders process auto scrap, white goods, secondary metals, aluminum, and selected structural steel shapes.

Harris also offers total infeed and downstream equipment for turnkey shredder installations.