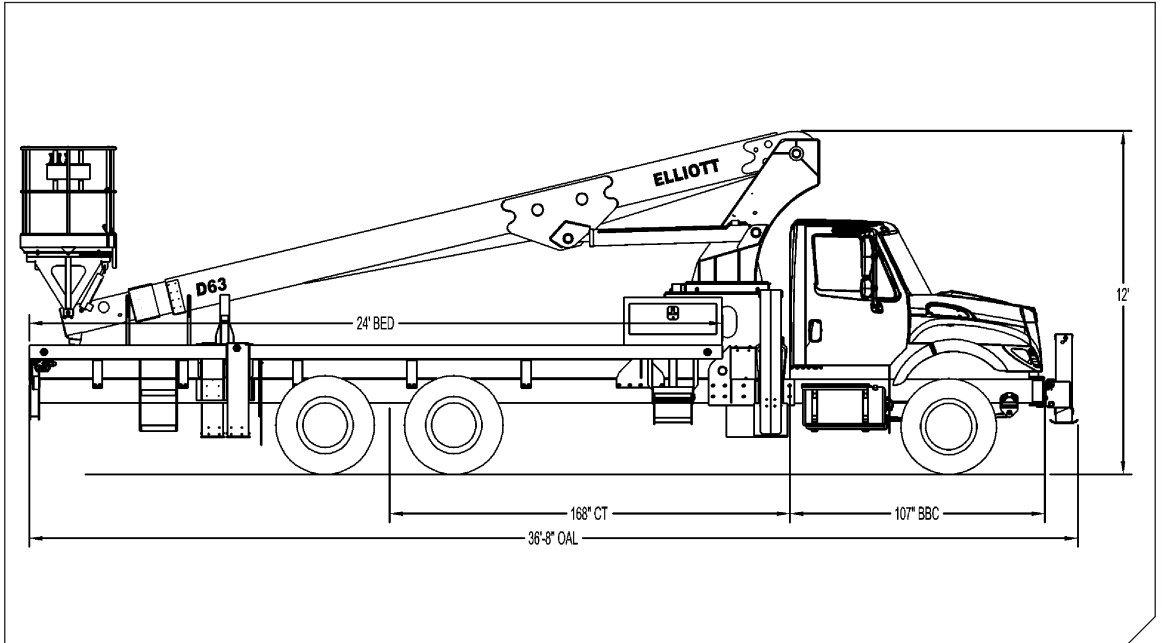


# HiReach™ EDD-3-63



## General Unit Description

**HiReach** – The machine that launched an industry, the wide-ranging Elliott HiReach telescoping aerial workplatforms and cranes allow you to do more with just a single machine. From material handling and digging to basic crane and boom, the HiReach does the work of a fleet of trucks. Available with heights ranging from 35 feet to 158 feet, the HiReach comes fully equipped with standard features that are sold as options by our competition. Only Elliott features full hydraulic extension with no cables and chains. Our extension cylinder arrangement gives you the smoothest, most precise ride in the industry. What's more, all of Elliott's products can be customized to create tailor-made machines that include special platform features, pressure washers, body and tool box packages and more.

Basic unit includes base assembly supporting front mount rotating turret, hydraulically powered rotation mechanism, oil reservoir, oil, manual hydraulic controls mounted on passenger side with fold-away step. Electronic proportional three stick remote controls on platform. Base mounted "H3" type hydraulically powered individually controlled main outriggers. "MH" type outriggers for rear stabilization. Two front stabilizers. High strength steel three section hydraulically telescoping boom with two 6" double acting lift cylinders and 4"/5" piggyback extension cylinders. Exposed cable carrier to boom tip. Hydraulically self-leveling 40" x 60" top mounted work platform with remote leveling from platform. Power take off and pump drive, pressure gauge, pump and holding valves on all cylinders. Remote start/stop at upper and lower controls, 12-volt emergency pump with switch at upper and lower controls, PTO hour meter, backup alarm, fire extinguisher, and two body harnesses and lanyards. Paint Hi-Reach white, outriggers red and bed and boxes black. Installed on chassis, tested and ready to operate. Working Height 68 ft. Platform capacity 600 lbs.

## Technical Specifications

**Minimum Platform Height:** 63' ground to platform floor.

**Working Range:** 68' max. height and 52' max. side reach.

**Work Platform:** Inverted "A" sub-frame with steel frame expanded metal floor and light wall tubular rails. Detachable platform support fitted to end of telescoping section with 2" diameter platform pivot shaft. Equipped with safety chain on opening and two safety lanyard attachment loops. Two safety harnesses and lanyards provided. Standard rating 600 lbs.

**Platform Leveling System:** Hydraulic "closed" system consisting of twin platform cylinders interacting with a boom-actuated master cylinder mounted in boom support turret. System is provided with factory-set relief valves to compensate for oil expansion or overload during platform leveling operation. Remote releveling controls provided in platform and at ground controls to give precise releveling capability.

**Platform Controls:** Three individual proportional electronic controllers with adjustable ramping meter pilot-operated, pressure-compensated modulating valves. The boom ground controls are mounted in the base assembly on curbside. Remote controls for boom operations from platform operate from a removable remote control box. Electric remote control cable extends through the column to cable carrier on side of boom to extending boom sections.

**Lower Control Box:** Steel box with lockable door on curbside at turret base.

**Outrigger Controls:** Multi-section parallel open-center stack valve for lever operated control of right and left main outriggers and front bumper jacks located in lower control box. Rear outriggers controlled with valve at outriggers.

**Outriggers:** Elliott "H3" type main outriggers with two horizontal telescoping sections each side for a 22 ft. spread. Additional stabilization provided by rear-mounted "MH" type outriggers and two tilting front bumper jacks.

**Frame:** One piece, all welded, box-type fabrication with integral outrigger mounts, oil reservoir tank and controlled mounts. Bolt-on torque frame distributes load to rear outriggers.

**Turret:** Reverse offset turret is one-piece weldment. Turret rotates on large diameter ball bearing.

**Rotation:** 360 degree non-continuous. Hydraulic motor drives turret through gear box.

**Boom:** High strength steel rectangular tube sections with 1/4" wall thickness. Assembly includes heavy-duty cylinder fittings, pivot pins, and replaceable wear pads.

**Boom Extension:** Two opposed 4" and 5" "Piggyback" internal cylinders with 2" rods extending the two outer boom sections.

**Lift:** Two double-acting 6" full displacement, long stroke cylinders provide smooth and stable boom elevation. Holding valves prevent boom from falling in event of hose failure.

**Cylinders:** All cylinders use microhoned cylinder tubing, chrome shafts, top grade packing and protective rod wipers. Cylinder-mounted holding valves provided on all load holding cylinders.

**Hoses:** All high pressure hose is wire braid reinforced with a minimum safety factor of 4 to 1.

**Oil Tank Capacity:** 70 gallon mounted to truck frame.

**Hydraulic System:** Operating pressure approximately 2,000 PSI. System is parallel open-center type and is equipped with liquid-filled pressure gauge. Oil is supplied to upper cylinders through hoses in center of turret to cable carrier along side of the boom.

**Pump:** Gear type, direct mount to truck PTO. 18 GPM @ 2,000 PSI on high engine speed.

**PTO:** Heavy-duty, high-speed. Cable engaged from cab.

**Cab Equipment:** PTO cable with indicator lights installed in truck cab. Engine speed control and start/kill installed with control switches in platform remote control box and also located in lower control box. U/L approved 5:BC dry chemical fire extinguisher installed in truck cab.

**Operators Manual & Video:** Two copies of operation, maintenance, safety and parts manual provided with each unit. Operational and safety video provided at delivery.

**Installation:** Unit installed on customer's truck, painted, system and tank filled with oil, tested, inspected, certified and ready to operate.

**Standard Paint:** Paint Hi-Reach white, outriggers red, and bed and boxes black. Top of bed painted with black nonskid surface.

**Bumper:** Bureau of Motor Carrier Safety rear bumper.

**Weight:** Approximately 24,500 lbs. with 24' steel-floor bed less truck.

**Truck Chassis:** Approx. 168" C.T. RBM 2,800,000 in-lb. per rail, 14,000 lb. front axle and 48,000 lb. GVWR required. Trucks must have extended rear frame, increased cooling, heavy-duty front and rear springs, 12V electrical system with high capacity alternator, cab clearance stop/tail/backup lights, and I.D. lamps. Additional equipment to consider: front tow hook, pintle hook, mud and snow tires for off-highway use. Recommended GVWR is minimum for HI-REACH with flatbed only. Contact factory when additional equipment is to be added.

## Options

**Rear Mount:** Rear turret with rear controls and no front bumper jacks. Requires fold-down platform rails or EZR platform.

**Work Platforms & Buckets:** Elliott "end-hung" platform and one or two one-worker fiberglass buckets available in lieu of standard "A frame" platform.

**Platform Rotation:** Manual, electric or hydraulic platform rotation available.

**Heavy-Duty Hydraulic Winch:** Mounted at the base of the boom for a long fleet angle and flat level spooling of cable. Heavy-duty winch supplied with 250 ft. of 5/8" diameter 6x37 IPS IWRC wire rope and swivel hook. Anti-2-block switch, 2-part hook, horn and certification to ANSI B 30.5 mobile cranes provided.

**Bed:** Length 24' (other lengths available) Width 96" with 3/6" steel tread plate floor or wood floor, 6" rub rail and heavy cross members. Stake pockets on both sides and rear. Two-step grip strut ladder with two grab handles located on both sides near rear of bed. Spray-suppressant splash guards installed. Chassis stop/turn/back-up lights remounted as necessary. Rear clearance and side marker lights and reflectors installed on bed. Custom beds and line/service bodies also available.

**Planetary Digger:** Single speed digger drive rated at 8,000 lb.-ft. of torque and operated at 6,800 lb.-ft. Digger stows on main boom with hydraulic latch, wind-up rope and over-stow valve. 24" tool box with remote cord for use with platform control box. Other digger drives and various size augers available.

**Hydraulic, Air & 110V Lines to Platform**

**Electric & Welder Generators**

**Line Bodies**

**Tool Storage**

**Cab Guard**

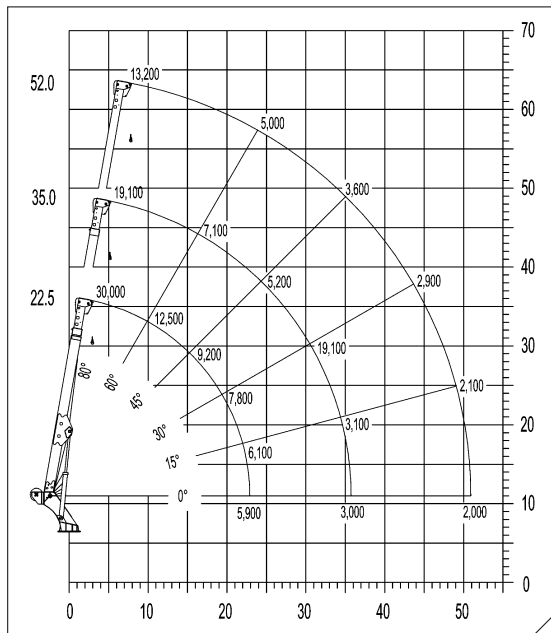
**Continuous Rotation**

**Auxiliary 12 Volt DC Hydraulic Pump**

**Operators Command Post on Turret**

**Roadside Controls**

**Miscellaneous Options...Contact factory for details**



**THIS AERIAL DEVICE IS NON-INSULATING. IT PROVIDES NO ELECTRICAL PROTECTION. CONTACT WITH OR INADEQUATE CLEARANCE TO AN ENERGIZED LINE OR APPARATUS IS AN ELECTROCUTION HAZARD.**



4427 South 76th Circle  
Omaha, NE 68127

Phone: 402-592-4500

Fax: 402-592-4553

Email: [info@elliottequip.com](mailto:info@elliottequip.com)

[www.elliottequip.com](http://www.elliottequip.com)