

# Stellar Cranes



The 10628 is the perfect crane for mining companies, heavy equipment dealers, construction companies, and various other large equipment companies where a longer reach is needed. This crane features a 55,000-foot pound (7.60 ton-m) capacity and can lift a maximum of 10,000-pounds at 5.5 -feet (4,536 kg at 1.68 m). Stellar Industries is the premier U.S. manufacturer in this class of crane to offer these unique features which include the standard proportional radio remote control, hexagonal boom construction, a planetary winch with 60-feet per minute (18.29 m) winch speed and hydraulic extensions to an unparalleled 28-feet (8.53 m) of reach.

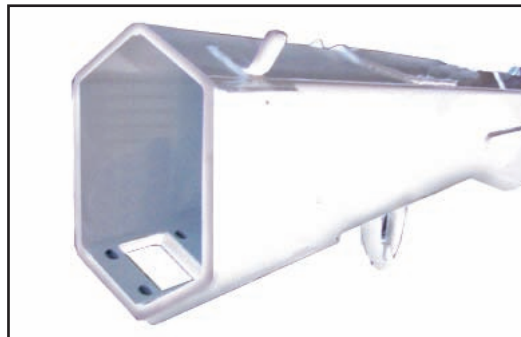
## Master Your Control

The Stellar 10628 is the leading crane in its class to offer a state-of-the-art, fully proportional radio remote as a standard feature. With the radio remote control, operators can be in the best location to see the work and the load being lifted while allowing them to stay out of harms way. The radio remote incorporates a proportional “trigger” that allows the operators to feather the crane for precise control capabilities. Additionally, the radio remote control handle includes engine start/stop functions, compressor on/off, engine speed controls, and an emergency shut-off.



## The Speed You Need

Maximizing winch speed is a common issue with today's crane operators. Stellar has addressed this issue by incorporating a planetary drive winch system with line speeds up to 60-ft./min. (18.29 m), giving the 10628 crane over twice the speed of the competition. A planetary winch also provides mechanical and hydraulic brakes for added security.



Above: Hexagonal boom construction provides a stronger cross section than square tubing. This reduces boom flex and side to side movement.

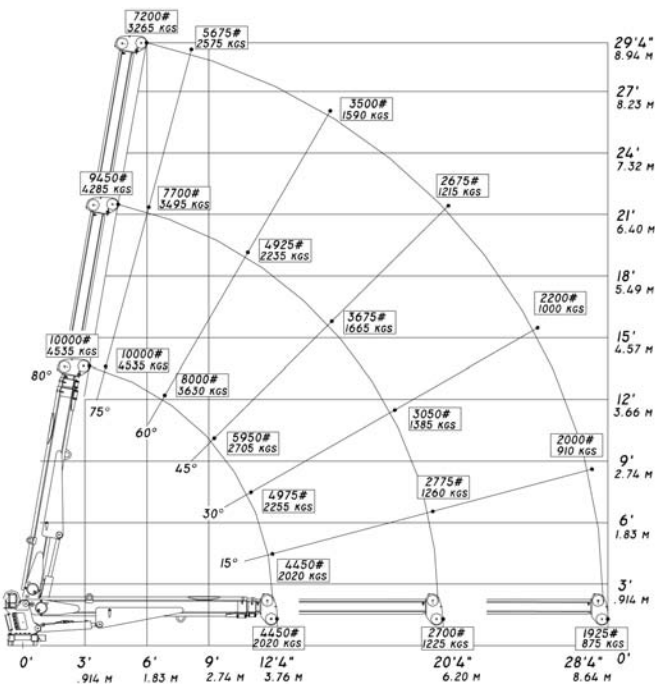
# Stellar Cranes

## Designed With You In Mind

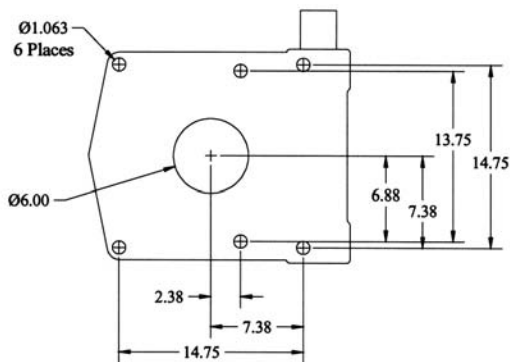
The 10628 telescopic crane has "reached" the top of its class. Stellar's team of designers have set parameters that were developed from customer input. Even *more* extension than is currently available on standard Stellar cranes has been requested. Unequaled extension to 28-feet 4-inches, coupled with a multi-function valve bank, which allows more than one function to be operated at one time, makes this crane incomparable in the market place.

The 10628 features were designed to allow the user to do their job faster and more efficiently, than with any competitive product. Stellar Industries, is not only committed to making a quality product, it's committed to helping you work more productively.

10628 Capacity Chart



Hole Mounting Detail



### Model 10628 Crane SPECIFICATION SHEET

Crane Rating: 55,000 ft-lbs (7.60 ton-m)  
 Standard Boom Length: 12' 4" (3.76 m) from CL of Crane

Boom Extension:  
 1st stage: Hydraulic 96" (243.8 cm)  
 2nd stage: Hydraulic 96" (243.8 cm)

Maximum Horizontal Reach: 28' 4" (8.64 m) from CL of Crane  
 Maximum Vertical Lift: 29' 4" (8.64 m)  
 (from crane base)

Boom Elevation: -5° to +80°

Stowed Height: 34" (86.4 cm)  
 (crane only)

Mounting Space Required: 20" x 21" (50.8 x 53.3 cm)  
 Shipping Weight: 2900 lbs (1315 kg)

Controls: Radio control standard for all functions.

Winch:  
 Rope Diameter: 7/16" (1.11 cm)  
 Line pull speed: 60 ft/min (18.29 m)  
 Max. single part line: 5000 lbs (2268 kg)  
 Max. double part line: 10,000 lbs (4535 kg)

Rotation: 400 degree power (worm gear)

Lifting Capacities:  
 4450 lbs @ 12' 4" (2020 kg @ 3.76 m)  
 2700 lbs @ 20' 4" (1225 kg @ 6.20 m)  
 1925 lbs @ 28' 4" (875 kg @ 8.64 m)

Power Supply Required: PTO & Pump  
 (8 gpm @ 3000 psi)  
 (30.3 lpm @ 207 bars)

NOTE: All Stellar cranes meet ANSI B30.5 and OSHA 1910.180 specifications.



190 State Street  
 P.O. Box 169  
 Garner, IA 50438  
 Telephone: 800-321-3741  
 Fax: 641-923-2812  
 Internet: [www.mechanictruck.com](http://www.mechanictruck.com)  
 Email: [sales@mechanictruck.com](mailto:sales@mechanictruck.com)

**Quality You Ask For By Name.**  
 Designed & Manufactured in the U.S.A.

\*Specifications may change without notification.  
 Copyright © 2005 Stellar Industries, Inc.