

# CHIT-KEY VAULT™

SIMPLE IN DESIGN, SUPERIOR IN PERFORMANCE.



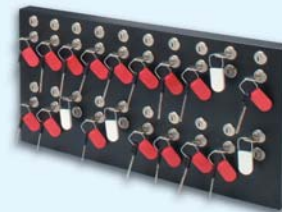
Alarm interface available for Chit-Key Vaults™

Our Chit-Key Vaults™ provide a simple yet clever technique for ensuring the safe return of high-value keys. Chit-Key Vault locks are paired to operate in tandem -- turning one key releases the second key, the first key is then locked in place until the second key is safely returned.

Chit-Key Vaults™ come in two standard sizes, but can be customized to meet specific customer requests. The smaller of the two sizes holds one tandem key position. The second model holds up to six tandem key positions. Both vaults are made of 18-gauge brushed stainless steel and use a variety of lock options.

## The Multi-Chit Panel

For tracking up to 50 keys at a time, the locks on our Multi-Chit Panels are paired up in rows just like the Chit-Key Vaults™. These panels are perfect for customers who need to control large numbers of keys, but do not require an electronically-controlled asset security device (Security Asset Manager™).



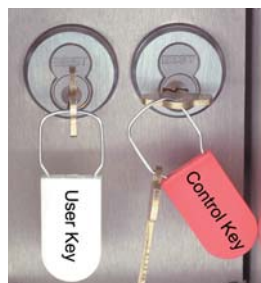
### Tamper Evident Tags

Included with our Chit-Key Panels, serialized Tamper Evident Key Tags keep your keys safe and secure, in and out of the Chit-Key Panel.



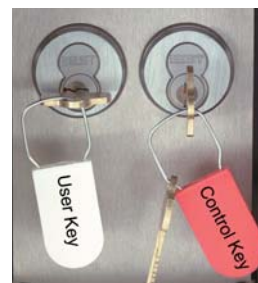
### Step 1:

Open chit-vault door with your user key.



### Step 2:

Insert user key into the empty lock inside the vault and turn it.



### Step 3:

Now turn and remove the control key already inside.



### Step 4:

Use the control key now to lock the chit-key vault door.

**Key Systems, Inc.**

Ship: 7635 Glacier Hill,  
Victor, NY 14564  
Mail: PO Box G, Fishers, NY 14453

**Sales & Customer Service**

585.924.7830  
800.888.3553  
info@keystorage.com

**Technical Support**

585.924.7810  
GFMS@keystorage.com

**Play on your own.**

Do this GFMS demonstration on your own web-enabled device. Call today for the TCP/IP address and password.

Tamper-Proof Key Rings (#5794991) and Vel-Key (#4137740/4072033) are registered trademarks. Registered trademarks are pending for Security Asset Managers, Global Facilities Management System, GFMS, Doorman (#7051563) and SWATBox.

Actual product may vary from images shown (i.e. doors of SAMs and Chit-Key Vaults have been removed for image clarity). Product specifications subject to change without notice.

Copyright 2007 Key Systems, Inc. All rights reserved.



**Chit-Key Vault™**

**Vault:**

Material 18-gauge brushed stainless steel  
Locks 3/4" High Security camlock (3/4" standard, supports 5/8" - 1 1/4")  
Interchangeable core (small format)  
Mortise cylinder (customer supplied - call for details)

**Decorative Bezel for Wall Mounting (optional):**

Material 16-gauge stainless steel  
Bezel Width 1 1/4"

Vault	Dimensions	Weight	Bezel Dimensions
1 Tandem Position	3 1/4" x 3 1/4" x 6"	3 lbs.	6" x 5" x 1/4"
6 Tandem Positions	5" x 11 1/4" x 13 1/4"	15 lbs.	13" x 13" x 1/4"

\*Chit-Key Vaults™ can also be used electronically with GFMS™.

**Multi-Chit Panel**

**Panel:**

Material 16-gauge Powder Coated Steel  
Locks 3/4" High Security camlock (3/4" standard, supports 5/8" - 1 1/4")  
Interchangeable core (small format)  
Mortise cylinder (customer supplied - call for details)

Panel	Dimensions	Weight
20-Key Mortise cylinder	21" x 10 3/4" x 1 1/4"	20 lbs.
50-Key Mortise cylinder	26" x 21" x 1 1/4"	45 lbs.
20-Key Cam	11" x 21" x 2"	15 lbs.
50-Key Cam	21" x 26" x 2"	33 lbs.
Tamper Evident Tags	1 1/2" x 4/5" x 1/5"	4.1 g
Capacity:	4-5 Keys	
Colors:	Red White	