

# Stellar Cranes



The 5520 is an ideal crane for public utilities, municipalities, water works, and any other situation needing heavy lifting. This crane features a 25,000 foot pound capacity and can lift a maximum of 5,000 pounds at five feet. Stellar Industries is the only U.S. manufacturer in this class of crane to offer several unique features as standard equipment. These include the standard proportional radio remote control, a planetary winch with 40 feet per minute winch speed, hexboom construction and hydraulic extensions to 20 feet of reach.

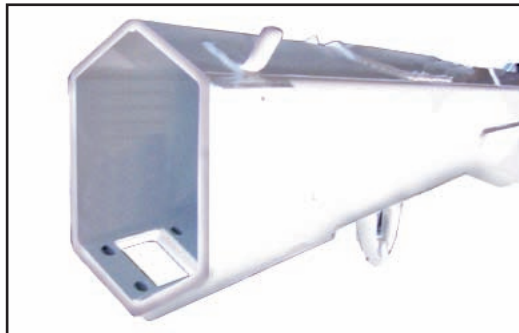
## Master Your Control

The Stellar 5520 is the only crane in its class to offer a state of the art, fully proportional radio remote as a standard feature. With the radio remote control an operator can be in the best location to see their work and the load being lifted while remaining out of harms way. The radio remote incorporates a proportional “trigger” that allows the operator to feather the crane for precise control capabilities. In addition, the radio remote control handle includes engine start/stop functions, compressor on/off, engine speed controls, and emergency shut-off.



## The Speed You Need

Increased winch speed has been the most common request from the field. Stellar has incorporated a planetary winch system with speeds to 40 ft./min., giving you increased speed over the competition. Since it's a planetary winch, you get the security of mechanical and hydraulic brakes.



Above: Hexagonal boom construction provides a stronger cross section than square tubing. This reduces boom flex and side to side movement.

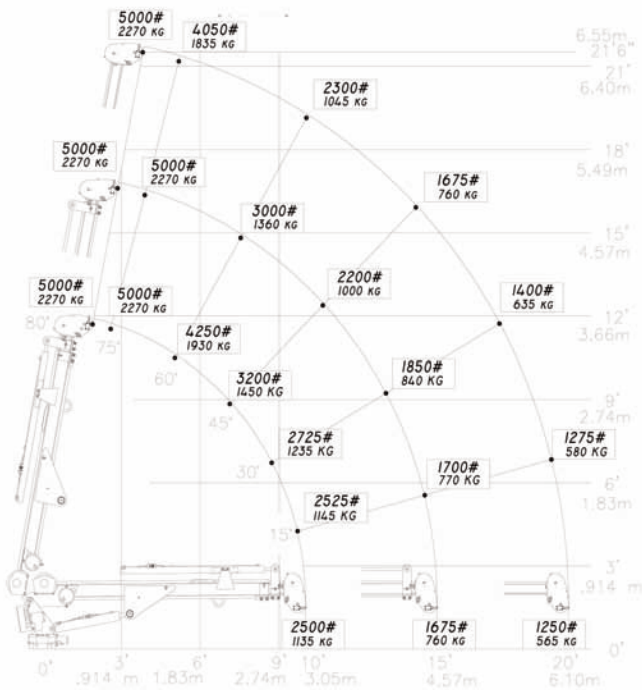
# Stellar Cranes

## Designed With You In Mind

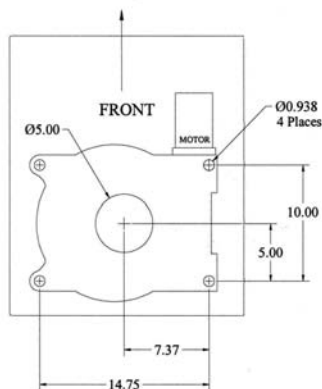
Stellar designed this crane using months of input from users throughout North America. This allows the 5520 telescopic crane to outshine all other cranes in its class with its features.

The features designed into the 5520 allow the user to do their job quicker, more efficient, and easier than any competitive product. At Stellar Industries, we are committed to making you work more productively.

5520 Capacity Chart



Hole Mounting Detail



## Model 5520 Crane SPECIFICATION SHEET

Crane Rating:	25,000 ft-lbs (3.46 ton-m)
Standard Boom Length:	10' (3.05 m) from CL of Crane
Boom Extension:	
1st stage:	Hydraulic 60" (152.4 cm)
2nd stage:	Manual 60" (152.4 cm)
Max. Horizontal Reach:	20'9" (6.32 m) from CL of Crane
Max. Vertical Lift: (from crane base)	21'4" (6.50 m)
Boom Elevation:	-5° to +80°
Stowed Height: (crane only)	36.5" (92.7 cm)
Mounting Space Required:	18" x 20" (45.7 x 50.8 cm)
Shipping Weight:	1400 lbs. (635 kg)
Controls:	Radio control standard for all functions
Winch:	
Rope Diameter:	5/16" (.794 cm)
Line Pull Speed:	40 ft/min (12.2m/min)
Max. Single Part Line:	2500 lbs (1135 kg)
Max. Double Part Line:	5000 lbs (2270 kg)
Rotation:	370° power (worm gear)
Lifting Capacities:	2500 lbs @ 10' (1135 kg @ 3.05 m) 1670 lbs @ 15' (760 kg @ 4.57 m) 1250 lbs @ 20' (565 kg @ 6.10 m)
Power Supply Required:	PTO & Pump (4.5 gpm @ 2850 psi) (17.03 lpm @ 197 bars)

NOTE: All Stellar cranes meet ANSI B30.5 and OSHA 1910.180 specifications.



190 State Street  
P.O. Box 169  
Garner, IA 50438  
Telephone: 800-321-3741  
Fax: 641-923-2812  
Internet: [www.stellarindustries.com](http://www.stellarindustries.com)  
email: [sales@stellarindustries.com](mailto:sales@stellarindustries.com)

**Our People. Our Products.**  
Designed & Manufactured in the U.S.A.

\*Specifications may change without notification.  
Copyright © 2006 Stellar Industries, Inc.