

Stellar Cranes



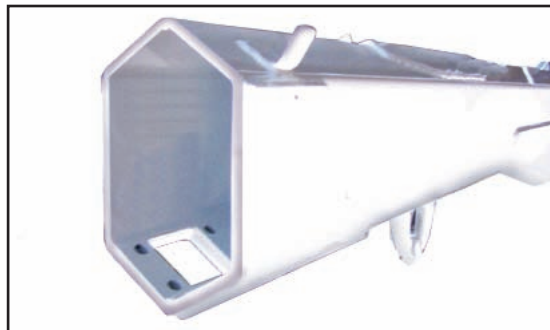
The 9620 is an ideal crane for heavy equipment dealers, construction companies, mining companies, and various other large equipment companies. This crane features a 55,000-foot/pound (7.60 ton-m) capacity with a maximum lifting capacity of 8,600-pounds at six-feet four-inches (3,900 kg at 1.92 m). Stellar Industries was the first U.S. manufacturer in this class of crane to offer several unique features as standard equipment. These include the standard proportional radio remote control, hexagonal boom construction, a planetary winch with 60-feet (18.29 m) per minute winch speed and all hydraulic extensions to 20-feet (6.10 m) of reach.

Master Your Control

The Stellar 9620 was the first crane in its class to offer a state-of-the-art, fully proportional radio remote as a standard feature. With the radio remote control, an operator can be in the best location to see their work and the load being lifted and it also allows them to stay out of harms way. The radio remote incorporates a proportional “trigger” that allows the operator to feather the crane for precise control capabilities. In addition, the radio remote control handle includes engine start / stop functions, compressor on/off, engine speed controls, and emergency shut-off.

The Speed You Need

Increased winch speed has been the most common request from the field. Stellar has incorporated a planetary winch system with speeds to 60 ft./min. (18.29 m), giving you over twice the speed of the competition. Since it's a planetary winch, you get the security of mechanical and hydraulic brakes as well.



Above: Hexagonal boom construction provides a stronger cross section than square tubing. This reduces boom flex and side to side movement.

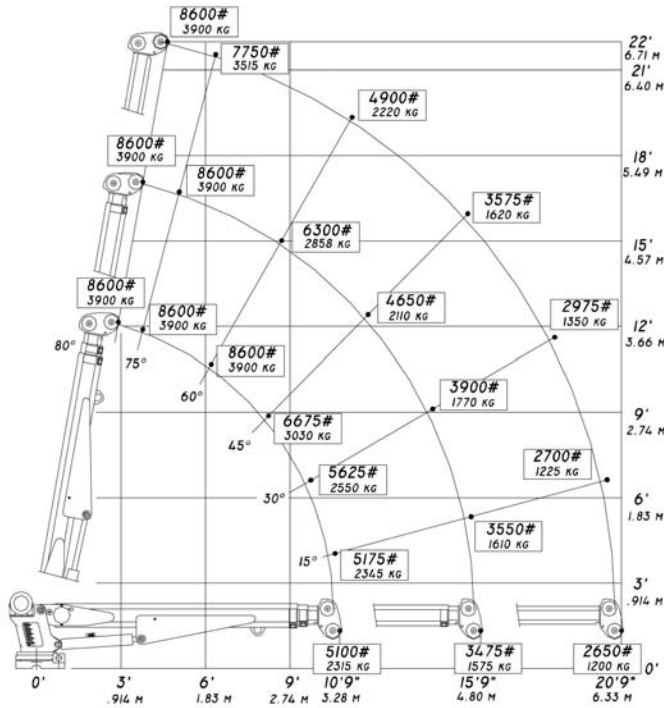
Stellar Cranes

Designed With You In Mind

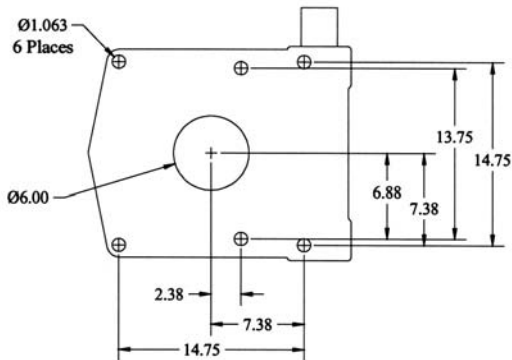
The 9620 telescopic crane brings more value added features to the market than any crane in its class. Our design parameters were developed using months of input from users throughout North America.

The features designed into the 9620 allow the user to do their job quicker, more efficient, and easier than any competitive product. At Stellar Industries, we are committed to helping you work more productively.

9620 Capacity Chart



Hole Mounting Detail



Model 9620 Crane SPECIFICATION SHEET

| | |
|--|---|
| Crane Rating: | 55,000 ft-lbs (7.60 ton-m) |
| Standard Boom Length: | 10' 9" (3.28 m) from CL of Crane |
| Boom Extension: | |
| 1st stage: | Hydraulic 60" (152.4 cm) |
| 2nd stage: | Hydraulic 60" (152.4 cm) |
| Max. Horizontal Reach: | 20'9" (6.32 m) from CL of Crane |
| Max. Vertical Lift: (from crane base) | 22' (6.71 m) |
| Boom Elevation: | -5° to +80° |
| Stowed Height: (crane only) | 34" (86.4 cm) |
| Mounting Space Required: | 20" x 21" (50.8 x 53.3 cm) |
| Shipping Weight: | 2120 lbs. (960 kg) |
| Controls: | Radio control standard for all functions. |
| Winch: | |
| Rope Diameter: | 3/8" (.95 cm) |
| Line Pull Speed: | 60 ft/min (18.29 m) |
| Max. Single Part Line: | 4300 lbs (1950 kg) |
| Max. Double Part Line: | 8600 lbs (3900 kg) |
| Rotation: | 400° power (worm gear) |
| Lifting Capacities: | 5100 lbs @ 10'9" (2315 kg @ 3.28 m) 3475 lbs @ 15'9" (1575 kg @ 4.80 m) 2650 lbs @ 20'9" (1200 kg @ 6.32 m) |
| Power Supply Required: | PTO & Pump (7-10 gpm @ 3000 psi) (26.5-37.9 lpm @ 207 bar) |

NOTE: All Stellar cranes meet ANSI B30.5 and OSHA 1910.180 specifications.



190 State Street
P.O. Box 169
Garner, IA 50438
Telephone: 800-321-3741
Fax: 641-923-2812
Internet: www.mechanictruck.com
email: sales@mechanictruck.com

Quality You Ask For By Name.
Designed & Manufactured in the U.S.A.

*Specifications may change without notification.
Copyright © 2005 Stellar Industries, Inc.