

Stellar Cranes



The Stellar Model 602H hydraulic articulating crane was created with the railroad industry in mind, but is applicable to many markets. The 602H has two 70" hydraulic extensions with a maximum horizontal reach of 26' and a maximum vertical lift of 29' from the base of the crane. Rated at 60,000 foot/pounds, this machine is available with either a pedestal or truck frame-mounted base. Once again, Stellar offers trend-setting advantages available on this machine. In its class, the 602H is the leader in foot/pound rating with a 6,000 pound capacity at 10', a full hydraulic extension out to a horizontal reach of 26' 4" from centerline of crane, and an excellent hook approach. Adding to this combination is standard heavy-duty hex boom construction and fully proportional radio remote control. Stellar Industries offers the crane of the future today for our discriminating buyers.

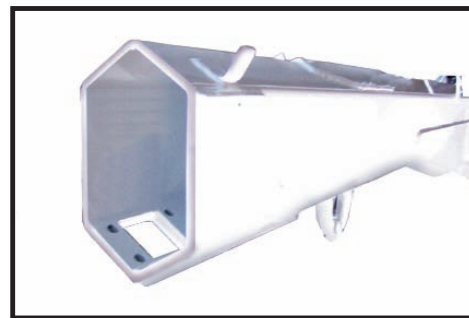
Master Your Control

The Stellar 602H offers a state-of-the-art fully proportional radio remote as a standard feature. With the radio remote control an operator can be in the best location to see their work and the load being lifted while remaining out of harms way. The radio remote incorporates proportional control that allows the operator to feather the crane for precise control capabilities on all functions. In addition, the radio remote control handle includes engine start/stop functions, compressor on/off, engine speed controls, and emergency shut-off.



Hexagonal Boom Construction

The state-of-the-art hexagonal boom construction on all Stellar cranes provides a stronger cross section than square tubing. This design eliminates boom flex and side to side movement. Hex tube construction is well documented in resistance to crushing, due to a smaller sidewall dimension, and requires less boom overlap while still maintaining the strength necessary for Stellar's heavy-duty cranes.



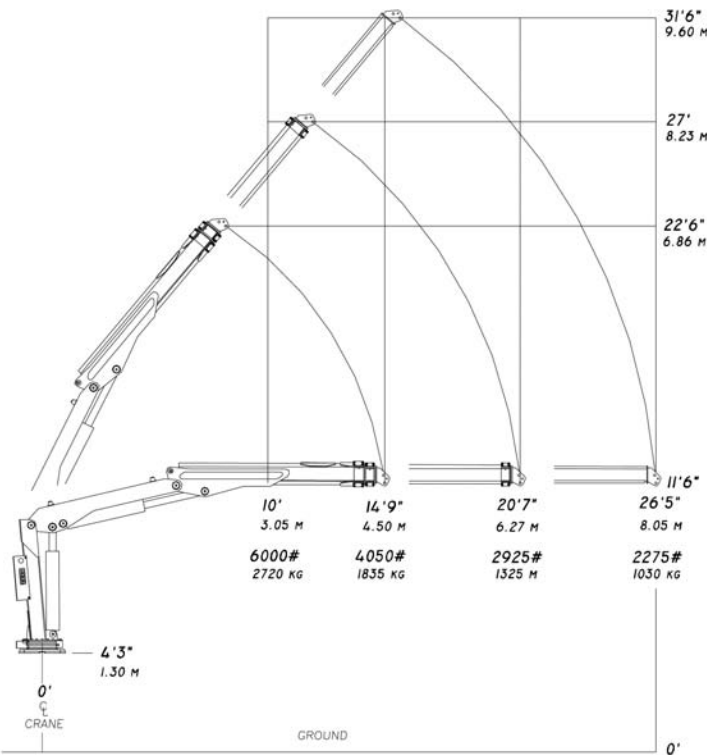
Designed & Manufactured
in the USA **STELLAR**
INDUSTRIES INC.

602H Articulated Crane

Stellar Cranes



602H Capacity Chart



Model 602H Crane SPECIFICATION SHEET

Crane Rating:	60,000 ft-lbs
Standard Boom Length:	14'9" from CL of Crane
Boom Extension:	
1st stage:	Hydraulic 70"
2nd stage:	Hydraulic 70"
Max. Horizontal Reach:	26'4" from CL of Crane
Maximum Vertical Lift: (from crane base)	29'
Inner Lift Cylinder:	6" bore with integral pilot operated counterbalance valves.
Outer Lift Cylinder:	6" bore with integral pilot operated counterbalance valves.
Extension Cylinder:	2 1/2 x 2 1/2 inch bore piggy-back with pilot operated counterbalance valves.
Rotation:	400 degree power (worm gear drive)
Lifting Capacities:	6,000 lbs @ 10' 4,050 lbs @ 14'9" 2,925 lbs @ 20'6" 2,275 lbs @ 26'4"
Power Supply Required:	PTO and pump (8 gpm @ 3500 psi)
Controls:	Radio control standard for all functions.
Stowed Height: (above crane case)	7'
Mounting Space Required	26" x 26"
Approx Ship Weight	3200 lbs.



190 State Street
 P.O. Box 169
 Garner, IA 50438
 Telephone: 800-321-3741
 Fax: 641-923-2812
 Internet: www.mechanictruck.com
 email: sales@mechanictruck.com

Quality You Ask For By Name.
 Designed & Manufactured in the U.S.A.

*Specifications may change without notification.
 Copyright © 2004 Stellar Industries, Inc.