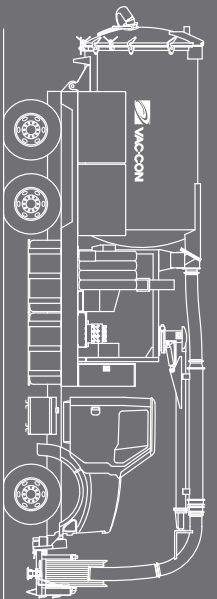




VAC-CON

MORE **POWER** TO YOU

3.5 YARD • 5 YARD • 9 YARD • 11 YARD • 12 YARD • 16 YARD
COMBINATION MACHINE SERIES





VAC-CON EMPOWERS YOU TO DO MORE

Vac-Con delivers more power and value than the competition

Only a Vac-Con comes fully loaded with a powerful package of thoughtful features. For more power, flawless ease of use, relentless performance, rugged durability and uncompromised safety...Vac-Con delivers.

More Uptime – Vac-Con machines are so durable they stay on the job longer

More Proof – Vac-Con's technology always delivers better equipment and solutions

More Success – Vac-Con machines allow you to load faster, last longer, and do the job better

More Confidence – With Vac-Con you just know that you can always do more



EASE OF OPERATION



We design every product with more ease of operation in mind by integrating important extras including ...

- Hydrostatic drive
- Single station controls
- Wireless remote
- Telescoping boom up to 10', 270° rotation
- Articulating hose reel

SAFETY



We power up performance without compromising safety by ensuring that the industry's best safety features are all included as standard equipment.

- Hydraulic rear door locks
- Automatic vacuum breaker
- Reflective striping
- Hydraulic safety interlock
- Emergency shut down

PERFORMANCE



We pack a punch that delivers more power to you by keeping performance prominent with power-conscious features like our ...

- 3-stage centrifugal compressor
- 27" Corten® steel fans in compressor
- Articulating hose reel
- 2-engine design allows totally independent control of vacuum and water system
- Hydrostatic Blower drive

DURABILITY



We ensure Vac-Con machines resist the worst wear and tear by using only the highest quality materials.

- Corten® steel body and compressor parts
- Centrifugal separator with cleanout
- Deflector shield in debris body
- Cross-linked polyethylene water tanks
- Welded fan components

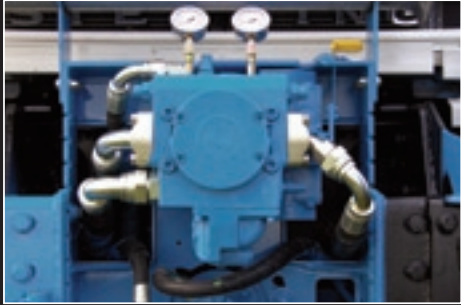
VAC-CON'S FEATURES ARE BETTER BY DESIGN



COMPRESSOR SYSTEM PERFORMS ON THE JOB AND UNDER WATER

Vac-Con's unique 3-stage compressor simply loads faster than any other fan on the market. Increasing both vertical and horizontal pull, this powerful system develops 200" (H₂O) of vacuum

to perform the toughest jobs, like vacuuming underwater without special attachments. It is backed by a five-year warranty.



HYDROSTATIC DRIVE MAKES THE OPERATOR'S LIFE EASIER

Using the Vac-Con chassis engine with hydrostatic drive for the vacuum is a more efficient system because it's less complicated and eliminates the need for cumbersome PTO, clutch, and gearbox operation.

It will allow the operator to focus on getting the job done. We don't believe that you should have to work hard to make the machine work hard!



DUAL ENGINE DESIGN RAISES THE POWER

Vac-Con's unique 2-engine design uses the chassis engine to drive the vacuum where you really need the power. The auxiliary engine drives the water system which delivers continuous, complete water recirculation whether

you're in motion or resting. This 2-engine design allows the convenience of truly independent vacuum and water system operation.



CORTEN® STEEL DEBRIS TANK IS MORE DURABLE AND RESISTS RUST AND CORROSION

All Vac-Con debris tanks are made of Corten® steel, a high strength, low-alloy steel, developed and proven in vacuum loader applications to resist corrosion and abrasion. The debris tank door is securely fastened by

hydraulic door locks and is controlled from the side of the truck for optimum safety and... it's backed by a five-year warranty.



VAC-CON WATER TANKS ARE THERE FOR THE LONG HAUL

Constructed of durable cross-linked polyethylene, these tanks resist damage from impact, are not affected by the elements or corrosion, and are easily maintained.

We are so confident, we offer a standard ten-year warranty.

COMBINATION MACHINE SERIES

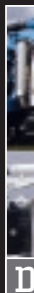
OUR "STANDARD" PACKAGE COMES FULLY LOADED

- 1 Hydraulically Operated, Front-Mounted Hose Reel
- 2 Operating Controls In Front
- 3 Hose Rewind Guide
- 4 Connection For High-Pressure Handgun
- 5 Polyethylene Water Tanks, Low Center Of Gravity
- 6 High Capacity Water Pump



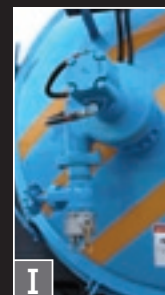
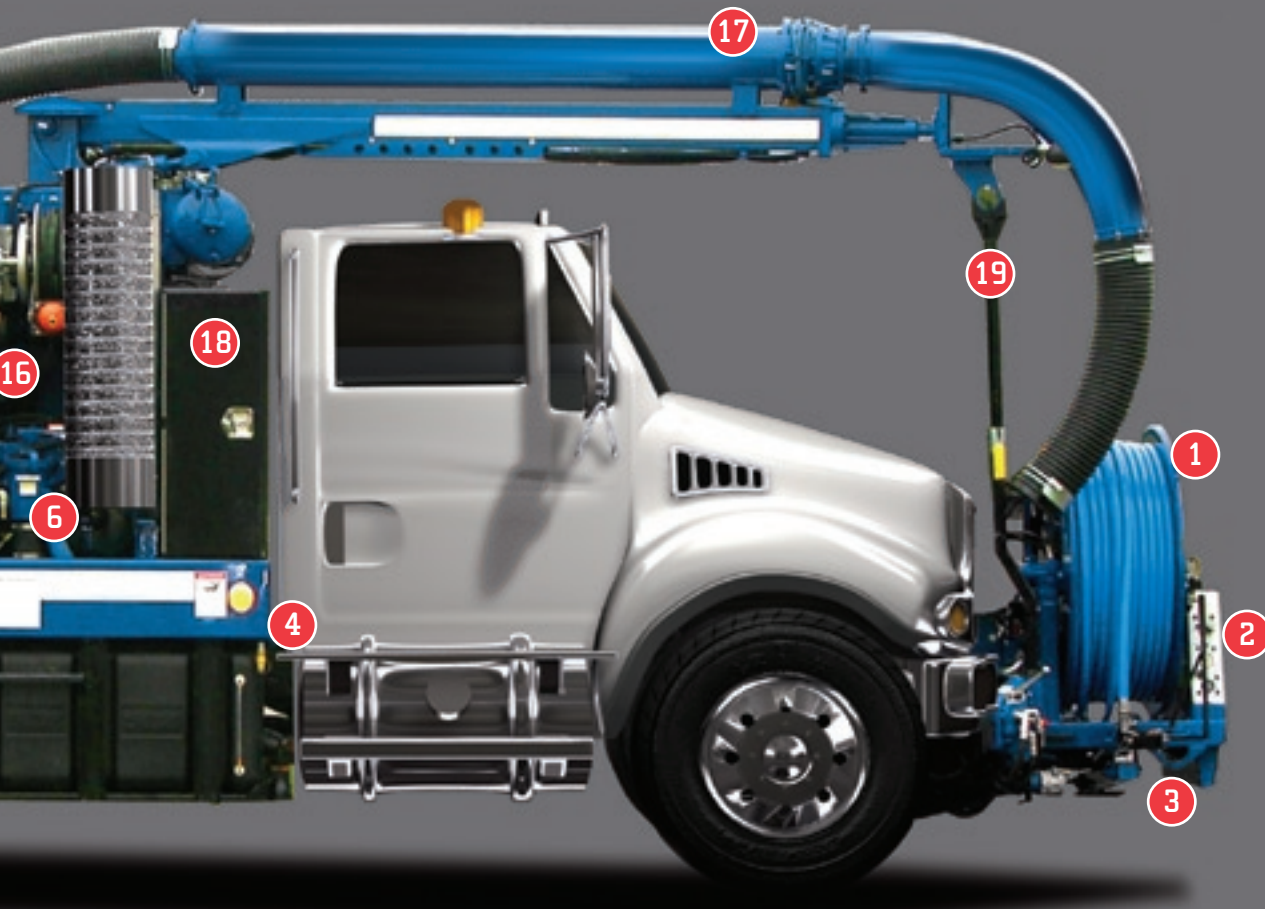
OPTIONS

- | | |
|---|--|
| A Hydrostatic Drive | F Hydro-Excavation Package |
| B Articulating Hose Reel | G Wireless Remote |
| C 3-Stage Centrifugal Compressor | H Variable Flow Water System |
| D 6' or 10' Telescoping Boom | I Hydraulic Pump-Off Systems |
| E Hi-Dump | J Positive Displacement Blowers |



- 7 Lubrication Chart
- 8 Debris Body Dump Control On Side Of Truck
- 9 Centrifugal Compressor, With Welded Corten® Steel Fans
- 10 Centrifugal Separator & Clean-Out
- 11 Hinged Door, Fully Opening With Hydraulic Door Locks
- 12 Butterfly Drain Valve & Hose
- 13 Corten® Steel Debris Tank
- 14 External Load Indicator

- 15 Exclusive Automatic Vacuum Breaker Shut Off System
- 16 Auxiliary Engine For Independent Water System Operation
- 17 Hydraulic Boom Rotates Up To 270°
- 18 Weather-Tight Tool Boxes With Locks
- 19 Transport Cradle For Boom



I

E

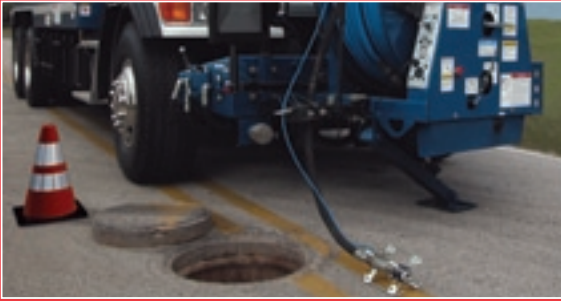
F

G

H

I

J



SEE WHAT MORE
YOU CAN DO WITH

INSPECTOR CAM
BY VAC-CON

When you can see the problem you can do so much more with a Vac-Con combo machine. Conveniently mounted and easy to use, Inspector Cam allows you to inspect and deal with broken pipes, protruding laterals, off-grade pipes, leaking joints, recessed taps, root infiltration and much more. Inspector Cam can be enhanced with video recording and on-screen footage and titling features.



POWER UP

Our Power Up customer support is dedicated to serving your needs and since we have the highest rated customer support program in the industry, you always get exactly what you need. Whether it's parts, technical service or maintenance training, Vac-Con's Power Up customer support people get it done... right away.

EVERY VAC-CON IS BACKED BY POWER UP CUSTOMER SUPPORT

No matter what you need, our mission is to help you on the spot. We go the extra mile to get you back on the job as soon as humanly possible. Vac-Con's part tracking software ensures that we have in inventory all the parts you need when you need them. We have a dedicated service facility for all warranty work, local repairs, and refurbishing work.

Power Up gives you:

- 26,000 square foot service department
- Training center with expert instructors
- 24/7 real person support help line
- Over \$5 million in parts inventory
- 24 hour parts shipment turnaround

THE BEST PART ABOUT VAC-CON IS THE HUMAN FACTOR

While we build the best machines available in the industry, it's our people who really make the difference. That's because our people always take the extra step and always go above and beyond to make sure you have exactly what you need to get the job done. The human factor also extends to our dealer network of:

- US dealers for all 50 states
- Canadian dealers for all provinces
- International dealers in most countries

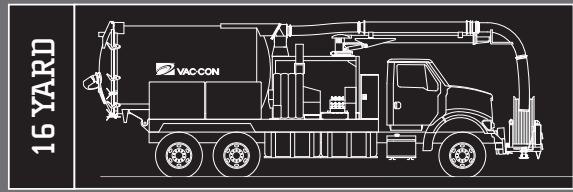
VAC-CON MAKES LEASING EASY

Our Ultimate Leasing Program uses creative financial solutions that maximize your working capital and:

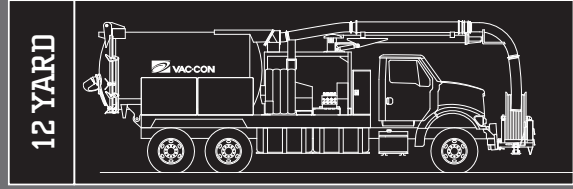
- 100% leasing allows you to add all the options you really need
- Fixed rate financing lets you plan with no surprises
- Simplifies your accounting and tax reporting
- Keeps your credit lines intact



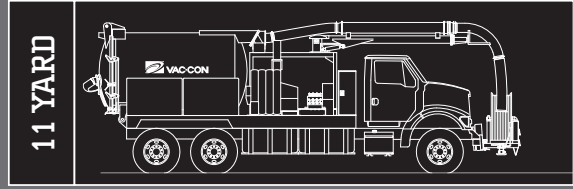
VAC-CON MODELS AND SPECS:



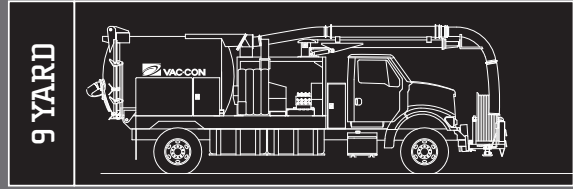
16 YARD



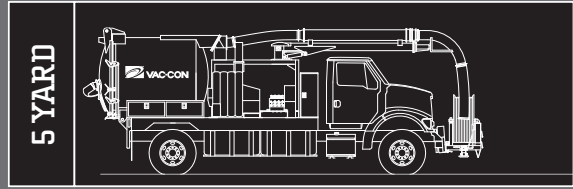
12 YARD



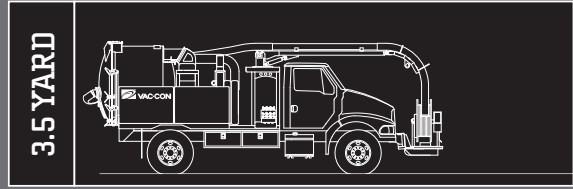
11 YARD



9 YARD



5 YARD



3.5 YARD



How does your machine stack up?
To request a demonstration call
904-284-4200 or visit www.vac-con.com

969 Hall Park Drive
Green Cove Springs, FL 32043 U.S.A.
Tel: 904-284-4200 • Fax: 904-284-3305
www.vac-con.com • vns@vac-con.com

SAFETY

DURABILITY

PERFORMANCE

EASE OF OPERATION

	16 YARD	12 YARD	11 YARD	9 YARD	5 YARD	3.5 YARD
Automatic Vacuum Breaker	•	•	•	•	•	•
Vacuum Breaker/Relief in Pendant Control Station	•	•	•	•	•	•
Emergency Shut Down	•	•	•	•	•	•
Hydraulic Safety Interlock	•	•	•	•	•	•
Circuit Breakers	•	•	•	•	•	•
Available Fan Silencer	•	•	•	•	•	•
Hydraulic Rear Door Locks	•	•	•	•	•	•
Boom Travel Tie Down	•	•	•	•	•	•
Protected Hose Reel Drive Components	•	•	•	•	•	•
Footage Counter	•	•	•	•	•	•
Low Water Alarm/Light	•	•	•	•	•	•
Strobe Lights	•	•	•	•	•	•
ICC Lighting	•	•	•	•	•	•
Reflective Striping	•	•	•	•	•	•
Corten® Steel Debris Body	•	•	•	•	•	•
Deflector Shield in Debris Body	•	•	•	•	•	•
Welded Fan Components	•	•	•	•	•	•
Centrifugal Separator with Cleanout	•	•	•	•	•	•
Water Pump Drain	•	•	•	•	•	•
Winter Recirculation	•	•	•	•	•	•
Centrifugal Compressor Flush Out	•	•	•	•	•	•
12 Month Warranty	•	•	•	•	•	•
Polyethylene Water Tanks from 500 to 1500 gallons	•	•	•	•	•	•
Polyurethane Paint	•	•	•	•	•	•
Available Hi Dump	•	•	•	•	•	•
Hydraulic Scissor Lift	•	•	•	•	•	•
Body Pump Off	•	•	•	•	•	•
Street Flusher	•	•	•	•	•	•
Full Opening Rear Door	•	•	•	•	•	•
Water Pump with Smooth Continuous Pressure	•	•	•	•	•	•
Front Tow Hooks	•	•	•	•	•	•
2-Stage Compressor	•	•	•	•	•	•
Available 3-Stage Centrifugal Compressor	•	•	•	•	•	•
27" Corten® Steel Fans in Compressor	•	•	•	•	•	•
2 Engine Design: Vacuum System powered by Chassis Engine and Water System by Auxiliary Engine	•	•	•	•	•	•
Portable Video Inspection	•	•	•	•	•	•
Boom Lights	•	•	•	•	•	•
Grate Lifting Hook on Boom	•	•	•	•	•	•
Front Mounted Hydraulic Hose Reels from 500' to 800' Capacity	•	•	•	•	•	•
Articulating Hose Reel	•	•	•	•	•	•
Hand Gun Reel	•	•	•	•	•	•
Manual Level Wind Guide	•	•	•	•	•	•
Available Positive Displacement Blower	•	•	•	•	•	•
6" Vac Intake Hose	•	•	•	•	•	•
8" Vac Intake Hose	•	•	•	•	•	•
4 Way Boom With 270° Rotation	•	•	•	•	•	•
Water Systems up to 3000 PSI and 120 GPM	•	•	•	•	•	•
Water Systems up to 4000 PSI and 30 GPM	•	•	•	•	•	•
Hydrostatic Blower Drive	•	•	•	•	•	•
Available Automatic Level Wind Guide	•	•	•	•	•	•
Telescoping Boom, Extendable Boom	•	•	•	•	•	•
Joystick for Boom	•	•	•	•	•	•
Available Wireless Remote	•	•	•	•	•	•
Coated Body/Body Wash Out	•	•	•	•	•	•
Hand Gun Wash Down System	•	•	•	•	•	•
Tachometer for Chassis Engine at Operator Station	•	•	•	•	•	•
Gravity Drain Systems	•	•	•	•	•	•
5" Butterfly Valve	•	•	•	•	•	•
Rear Door Pipe Rack	•	•	•	•	•	•
Rotary Pipe Rack	•	•	•	•	•	•
Tool Boxes / Tool Storage	•	•	•	•	•	•