

# Stellar Cranes



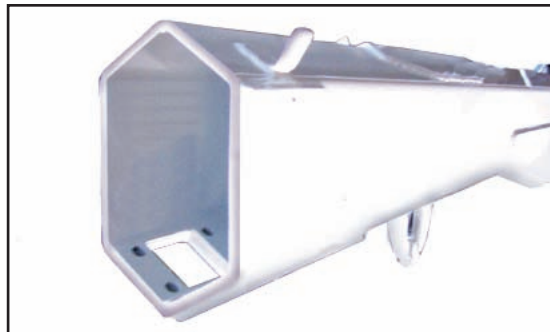
With the Stellar 6620, the hassles of pulling pins and wrestling a manual extension to get 20-feet are gone. Stellar is the leading manufacturer, in this class of crane, to offer two hydraulic extensions to 20-feet (6.10 m) of reach. By incorporating two hydraulic extensions, there is no need to manually pull-out extensions. The crane does the extending, not the operator. Stellar Industries was the first U.S. manufacturer in this class of crane to offer several unique features as standard equipment. These include the standard proportional radio remote control, hexagonal boom construction and a planetary winch with 60-feet per minute (18.29 m) winch speed.

## Master Your Control

The Stellar 6620 offers a state-of-the-art radio remote as a standard feature. With the radio remote control an operator can be in the best location to maintain eye contact with their work and the load being lifted. The radio remote also incorporates a proportional “trigger” that allows you to feather the crane for precise control capabilities. In addition, the radio remote control handle includes engine start / stop functions, compressor on/off, engine speed control and emergency shut-off.

## The Speed You Need

Increased winch speed has been the most common request from the field. Stellar has incorporated a planetary winch system with speeds to 60 ft./min. (18.29 m), giving over twice the speed of the competition. Since it's a planetary winch, you get the security of mechanical and hydraulic brakes as well.



Above: Hexagonal boom construction provides a stronger cross section than square tubing. This reduces boom flex and side to side movement.

Designed & Manufactured **STELLAR**  
in the USA  
INDUSTRIES INC.

6620 Telescopic Crane

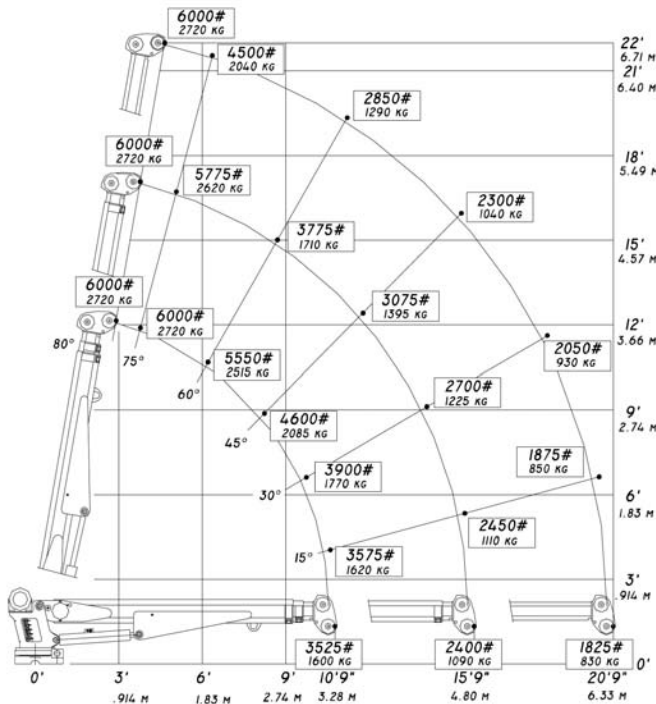
# Stellar Cranes

## Designed With You In Mind

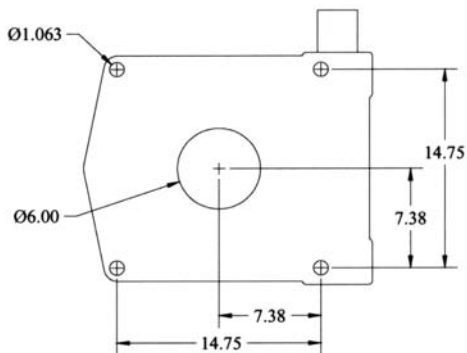
The 6620 telescopic crane brings more value added features to the market than any competitive crane in its class. The design parameters were developed using months of input from users throughout North America.

The 6620 features were designed to allow the user to do their job faster, more efficiently, and more easily than with any competitive product. Stellar Industries is not only committed to making a quality product, it's committed to helping you work more productively.

6620 Capacity Chart



Hole Mounting Detail



## Model 6620 Crane SPECIFICATION SHEET

Crane Rating: 38,000 ft-lbs (5.25 ton-m)  
 Standard Boom Length: 10' 9" (3.28 m) from CL of Crane

Boom Extension:  
 1st stage: Hydraulic 60" (152.4 cm)  
 2nd stage: Hydraulic 60" (152.4 cm)

Max. Horizontal Reach: 20'9" (6.32 m) from CL of Crane  
 Max. Vertical Lift: 22' (6.71 m)  
 (from crane base)

Boom Elevation: -5° to +80°

Stowed Height: 32.5" (82.6 cm)  
 (crane only)

Mounting Space Required: 20" x 21" (50.8 x 53.3 cm)  
 Shipping Weight: 1625 lbs (735 kg)

Controls: Radio control standard  
 for all functions

Winch:  
 Rope Diameter: 5/16" (.794 cm)  
 Line Pull Speed: 60 ft/min (18.29 m)  
 Max. Single Part Line: 3000 lbs (1360 kg)  
 Max. Double Part Line: 6000 lbs (2720 kg)

Rotation: 400° power  
 (worm gear)

Lifting Capacities:  
 3525 lbs @ 10'9" (1600 kg @ 3.28 m)  
 2400 lbs @ 15'9" (1090 kg @ 4.80 m)  
 1825 lbs @ 20'9" (830 kg @ 6.32 m)

Power Supply Required: PTO & Pump  
 (8 gpm @ 2850 psi)  
 (30.31 pm @ 197 bars)

NOTE: All Stellar cranes meet ANSI B30.5 and OSHA 1910.180 specifications.



190 State Street  
 P.O. Box 169  
 Garner, IA 50438  
 Telephone: 800-321-3741  
 Fax: 641-923-2812  
 Internet: [www.mechanictruck.com](http://www.mechanictruck.com)  
 email: [sales@mechanictruck.com](mailto:sales@mechanictruck.com)

**Quality You Ask For By Name.**  
 Designed & Manufactured in the U.S.A.

\*Specifications may change without notification.  
 Copyright © 2005 Stellar Industries, Inc.