

# Stellar Cranes



The 6628 is an ideal crane for public utilities, municipalities, water works, and any other situation needing heavy lifting at a long range (28'). This crane features a 38,000 foot pound capacity and can lift a maximum of 5,400 pounds at seven feet. Stellar Industries was the first U.S. manufacturer in this class of crane to offer several unique features as standard equipment. These include the standard proportional radio remote control, a planetary winch with 60 feet per minute winch speed, hexboom construction, and hydraulic extensions to 28 feet of reach.

## Master Your Control

The Stellar 6628 offers a state-of-the-art radio remote as a standard feature. With the radio remote control an operator can be in the best location to maintain eye contact with their work and the load being lifted. The radio remote also incorporates a proportional "trigger" that allows you to feather the crane for precise control capabilities. In addition, the radio remote control handle includes engine start / stop functions, compressor on/off, engine speed control and emergency shut-off.



## The Speed You Need

Increased winch speed has been the most common request from the field. Stellar has incorporated a planetary winch system with speeds to 60 ft./min. (18.29 m), giving over twice the speed of the competition. Since it's a planetary winch, you get the security of mechanical and hydraulic brakes as well.



Above: Hexagonal boom construction provides a stronger cross section than square tubing. This reduces boom flex and side to side movement.

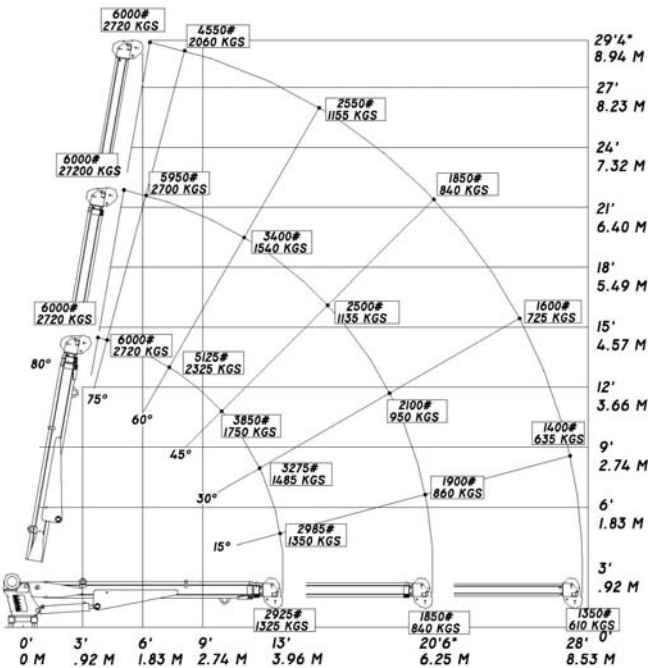
# Stellar Cranes

## Designed With You In Mind

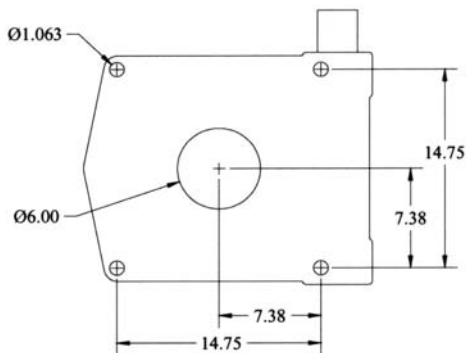
Stellar Industries designed the 6628 telescopic crane incorporating all of the best features of our "stellar" crane product line. In addition to features standard to the telescopic line, this machine is capable of full hydraulic extension to 28'. This feature sets this size of crane at the "head of the class".

The 6628 features were designed to allow the user to do their job faster, more efficiently, and more easily than with any competitive product. Stellar Industries is not only committed to making a quality product, it's committed to helping you work more productively.

6628 Capacity Chart



Hole Mounting Detail



### Model 6628 Crane SPECIFICATION SHEET

Crane Rating: 38,000 ft-lbs (5.25 ton-m)  
 Standard Boom Length: 13' (3.96 m) from CL of Crane

Boom Extension:  
 1st stage: Hydraulic 90" (228.6 cm)  
 2nd stage: Hydraulic 90" (228.6 cm)

Max. Horizontal Reach: 28' (8.53 m) from CL of Crane

Max. Vertical Lift: 29' 4" (8.94 m) (from crane base)

Boom Elevation: -5° to +80°

Stowed Height: 32.5" (82.6 cm) (crane only)

Mounting Space Required: 20" x 21" (50.8 x 53.3 cm)

Shipping Weight: 1900 lbs (885 kg)

Controls: Radio control standard for all functions

#### Winch

Rope Diameter: 5/16" (.794 cm)  
 Line Pull Speed: 60 ft/min (18.29 m)  
 Max. Single Part Line: 3000 lbs (1360 kg)  
 Max. Double Part Line: 6000 lbs (2720 kg)

Rotation: 400° power (worm gear)

Lifting Capacities:  
 2925 lbs @ 13' (2440 kg @ 3.96 m)  
 1850 lbs @ 20'6" (1540 kg @ 6.25 m)  
 1350 lbs @ 28' (1130 kg @ 8.54 m)

Power Supply Required: PTO & Pump (8 gpm @ 2850 psi) (30.31 pm @ 197 bars)

NOTE: All Stellar cranes meet ANSI B30.5 and OSHA 1910.180 specifications.



190 State Street  
 P.O. Box 169  
 Garner, IA 50438  
 Telephone: 800-321-3741  
 Fax: 641-923-2812  
 Internet: www.mechanictruck.com  
 email: sales@mechanictruck.com

**Quality You Ask For By Name.**  
 Designed & Manufactured in the U.S.A.

\*Specifications may change without notification.  
 Copyright © 2005 Stellar Industries, Inc.