

STELLAR CLASS 1 & 2 LP GAS SERVICE TRUCKS



The Class 1 & 2 LP Gas Service Trucks from Stellar Industries, Inc. are extremely versatile service trucks. They make transporting, loading and unloading gas cylinders a simple, single-person operation without the need of a trailer or additional setting equipment.

The LP Gas Service Bodies are designed to haul a single 1000-gallon or two 500-gallon propane tanks, plus everything necessary to install and service the tanks. These service trucks are also designed to safely and securely carry small LP tanks with the use of E-track and a side rack (this is an option on the Class 2 model).

Operating a Stellar LP Gas Service Truck is an ideal addition to any propane business because it is easy to use and only requires one operator.

The Class 1 service truck is equipped with a 3216 articulating crane that has a 450° rotation and is capable of lifting 2,000 pounds at the full 16' hydraulic extension. The Class 2 is equipped with a 6620 telescopic crane that has 400° rotation and has a capacity of 1,825 pounds at 20'9" hydraulic reach. Both cranes are operated with a fully proportional radio remote control that is a standard feature.

Stellar Industries, Inc. works hard to give you a service truck that offers versatility, dependability and efficiency. Stellar is committed to giving you the competitive edge.



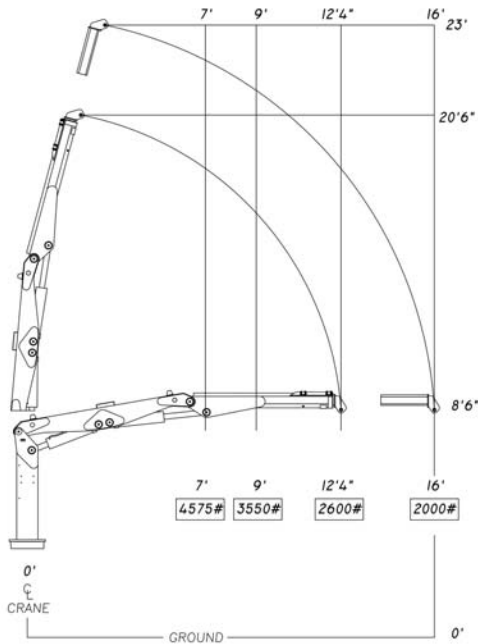
*Designed & Manufactured
in the USA*

STELLAR
INDUSTRIES INC.

LP Gas Service Truck

STELLAR CLASS 1 & 2 LP GAS SERVICE TRUCKS

Class 1 Service Truck



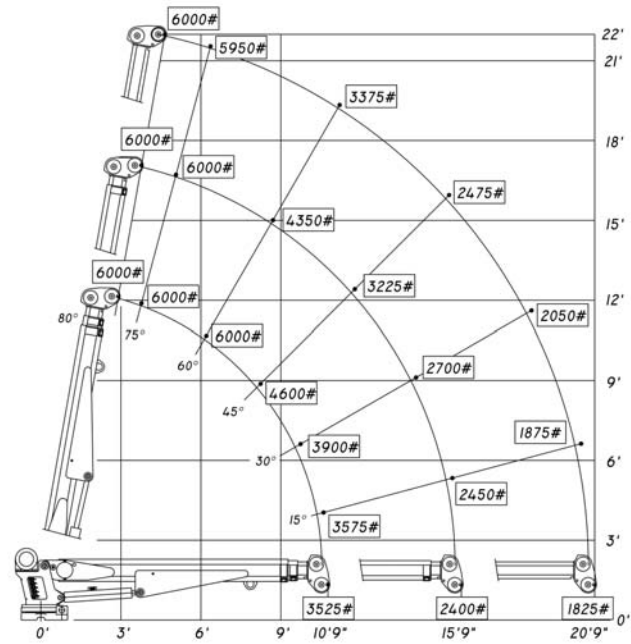
Crane Features

- Crane model 3216 knuckleboom crane
- 32,000 foot/pound capacity
- 450° rotation
- 16' all hydraulic reach
- Fully proportional radio remote control

Truck Body Features

- 14' LP gas service body
- 108" CA chassis
- Torsion box understructure
- Street side or curb side steel tool compartments
- Multiple number of compartment options
- Street side or curb side 2-piece removable or fixed fence
- Optional non-skid Scorpion tough coat spray floor covering
- Slide in aluminum tailboard
- Heavy duty rear step bumper w/ 2" receiver tube
- Multiple outrigger options available
- Imron 5000 paint
- Automotive style electrical wiring harnesses

Class 2 Service Truck



Crane Features

- Crane model 6620 telescopic crane
- 38,000 foot/pound capacity
- 400° rotation
- 20' 9" maximum horizontal reach
- Fully proportional radio remote control

Truck Body Features

- 12' LP gas service body
- 84" CA chassis
- Torsion box understructure
- Street side or curb side steel tool compartments
- Multiple number of shelving options
- Optional street side or curb side removable fence with optional E-Track
- Optional non-skid Scorpion tough coat spray floor covering
- Heavy duty rear step bumper w/ 2" receiver tube
- Multiple outrigger options available
- Imron 5000 paint
- Automotive style electrical wiring harnesses



280 West Third Street
P.O. Box 169
Garner, IA 50438
Telephone: 800-321-3741
Fax: 641-923-2812
Internet: www.mechanictruck.com
E-mail: sales@mechanictruck.com



Subject to change without notification.
5/02