

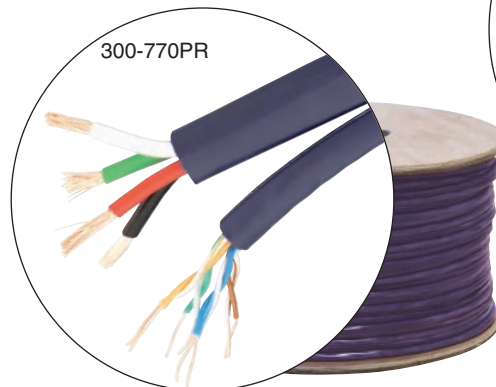
Structured Wiring Cables



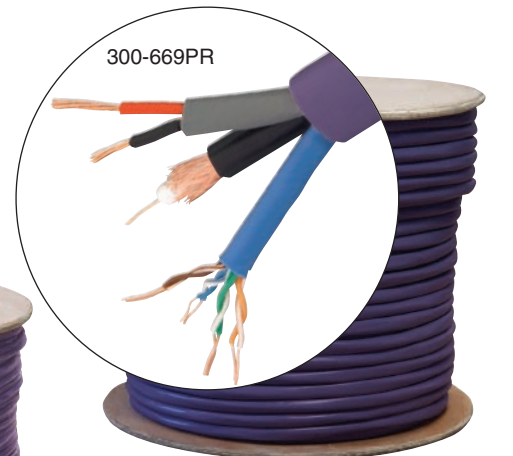
Multimedia & Network Connectivity



- The best structured wiring cable solutions for video-voice-data distribution
- Carries video and/or networking and audio/low-power over a structured cable
- User-friendly design helps save installation time and money and ensures neatness
- Ensures premises will be ready for future services such as home security
- High-quality RG59 coaxial cable for excellent video transmission
- Premium 4-pair CAT5E network cable with solid copper conductors
- 2 or 4-conductor speaker wire; can also power video cameras, etc.
- Flame retardant PVC jackets
- UL Listed
- NEC Type CM/CL3/CL2



1xCAT5E 350MHz + 16/4 Speaker Cable, Siamese



1xRG59 + 1xCAT5E 350MHz + 18/2 Speaker Cable, Bundled

Product Description

When it comes to structured wiring, top contractors naturally want cables with the highest in performance—the performance they'll find in Steren quality cables. Using these distinctive cables results in a fast, easy and neat installation. Time and expense are saved in installing each of these siamese or bundled cables: no more pulling multiple cables through the premises. The 300-669 consists of a high-quality RG59 cable for video, a CAT5E 4-pair cable for networking and a 18/2 speaker cable. The 300-770 contains a CAT5E 4-pair cable and a high-strand-count 16/4 speaker cable.

New Product Release



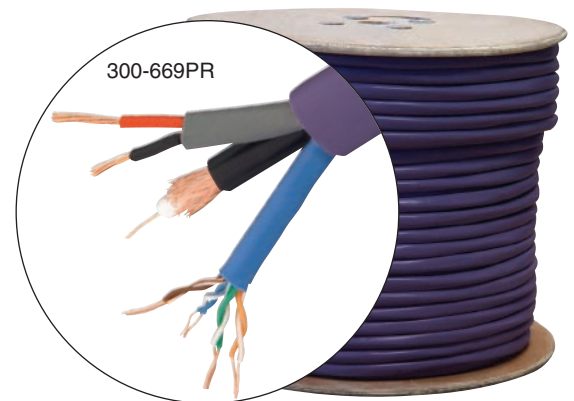
Structured Wiring Cables

Specifications

300-669

1xRG59 + 1xCAT5E 350MHz + 18/2 Speaker Cable, Bundled

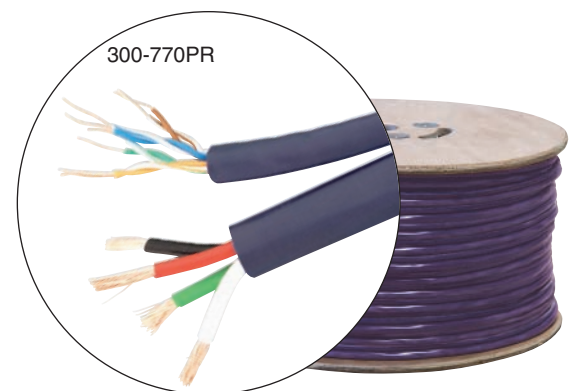
- One RG59 20 AWG coaxial cable, solid copper conductor
- One 4-pair 24 AWG CAT5E networking cable, solid copper conductors
- One 18/2 speaker/power limited circuit cable, stranded copper conductors
- Flame retardant PVC jacket
- Outer diameter: 0.512" (13mm)
- UL Listed, NEC Type CM/CL2
- Conforms to TIA/EIA 568-B.2 standards
- Available in purple outer jacket
- Available in 1000' spools



300-770

1xCAT5E 350MHz + 16/4 Speaker Cable, Siamese

- One 4-pair 24 AWG CAT5E network cable, solid copper conductors
- One 65-strand 16/4 speaker/power limited circuit cable, copper conductors
- Flame retardant PVC jackets
- Outer diameters:
 - CAT5E: 0.217" (5.5mm)
 - 16/4: 0.295" (7.5mm)
- UL Listed, NEC Type CM/CL3
- Conforms to TIA/EIA 568-B.2 standards
- Available in purple outer jackets
- Available in 500' spools





Structured Wiring Cables

Specifications

Mechanical Construction

RG59 Cable

Outer Jacket: 0.24" (6.1mm) OD, PVC, Black
 Braid Shield: 112 x 0.006" (0.16mm) OD, Stranded Copper, 95% Coverage
 Dielectric: 0.144" (3.66mm) OD, Foam Polyethylene
 Conductor: 0.32" (0.813mm) OD, 20 AWG, Solid Copper

Cat5E Cable

Outer Jacket: 0.217" (5.5mm) OD, PVC, Blue
 Insulation: 0.037" (0.93mm) OD, Polyolefin, Pair Primary Colors: Blue, Orange, Green, Brown
 Conductor: 0.020" (0.511mm) OD, 24 AWG, Solid Copper, 4 Pairs

16/4 Speaker Cable

Outer Jacket: 0.295" (7.5mm) OD, Grey
 Insulation: 0.087" (2.2mm) OD, PVC, Black/White/Red/Green
 Conductor: 16 AWG (65 x 34 AWG), Stranded Copper

18/2 Speaker Cable

Outer Jacket: 0.197" (5.0mm) OD, PVC, Grey
 Insulation: 0.067" (1.70mm) OD, PVC, Red/Black
 Conductor: 18 AWG (7 x 26 AWG), Stranded Copper

Electrical Specifications

RG59 Cable

Impedance: 75Ω ± 3Ω
 Velocity of Propagation: 82% min.
 DC Resistance: 10.5Ω/kft max.
 Dielectric Breakdown: 1000Vrms
 Insertion Loss Sweep Test: 5-1000MHz
 Structural Return Loss (max):
 20 dB @ 10-300MHz
 15 dB @ 301-1000MHz

Maximum Attenuation:

| Frequency (MHz) | dB/100ft |
|-----------------|----------|
| 1 | 0.17 |
| 10 | 0.76 |
| 50 | 1.80 |
| 100 | 2.60 |
| 200 | 3.80 |
| 400 | 5.37 |
| 700 | 7.11 |
| 900 | 8.40 |
| 1000 | 8.80 |

NEC Type CM, UL or ETL Listed

Electrical Specifications (Continued)

Cat5E Cable

DC Resistance: 9.38Ω/100m
 DC Unbalance: 5%
 Pair to Ground Capacitance Unbalance: 330pF/100m
 Characteristic Impedance: 100Ω
 Propagation Delay: 538ns/100m max @100MHz
 Propagation Delay Skew: 45ns/100m
 NEC Type CM
 UL or ETL Listed

16/2 Speaker Cable

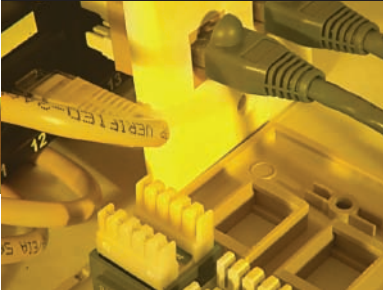
Dielectric Strength: 2000 VDC @3 sec
 DC Resistance: 4.8Ω/kft
 Voltage: 300V
 NEC Type CL3
 UL or ETL Listed

18/2 Speaker Cable

Dielectric Strength: 2000 VDC @3 sec
 DC Resistance: 4.8Ω/kft
 Voltage: 300V
 NEC Type CL2
 UL or ETL Listed

All dimensions are nominal. Specifications are subject to change without notice.

New Product Release



Structured Wiring Cables

Related Products

- 300-771GY** 1xCAT5E 350MHz + 2xRG6/U Quad Shield, Triamese
- 300-772□□** 1xCAT5E 350MHz + 1xRG6/U Quad Shield, Siamese (RD, WH)
- 300-773BL** 2xCAT5E 350MHz + 1xRG6/U Quad Shield, Triamese
- 300-774BL** 2xCAT5E 350MHz + 2xRG6/U Quad Shield, Bundled
- 200-925** HDTV Mini RG59 5-Wire, Stranded Center Conductors
- 200-926** HDTV Mini RG59 5-Wire, Solid Center Conductors
- 301-178** RJ45 8x8 CAT5E Round-Solid Cable Plug 3-Prong
- 301-188** RJ45 Shielded 8x8 CAT5E Round-Solid Cable Plug 3-Prong

Packaging

These cables are supplied in 500-ft. (300-770) or 1000-ft. (300-669) spools.

Ordering Information:

300-669PR 1xRG59 + 1xCAT5E 350MHz + 18/2 Speaker Cable, Bundled

300-770PR 1xCAT5E 350MHz + 16/2 Speaker Cable, Siamese

PR-034