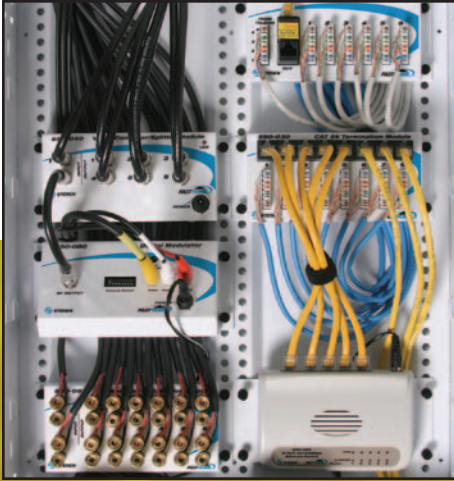


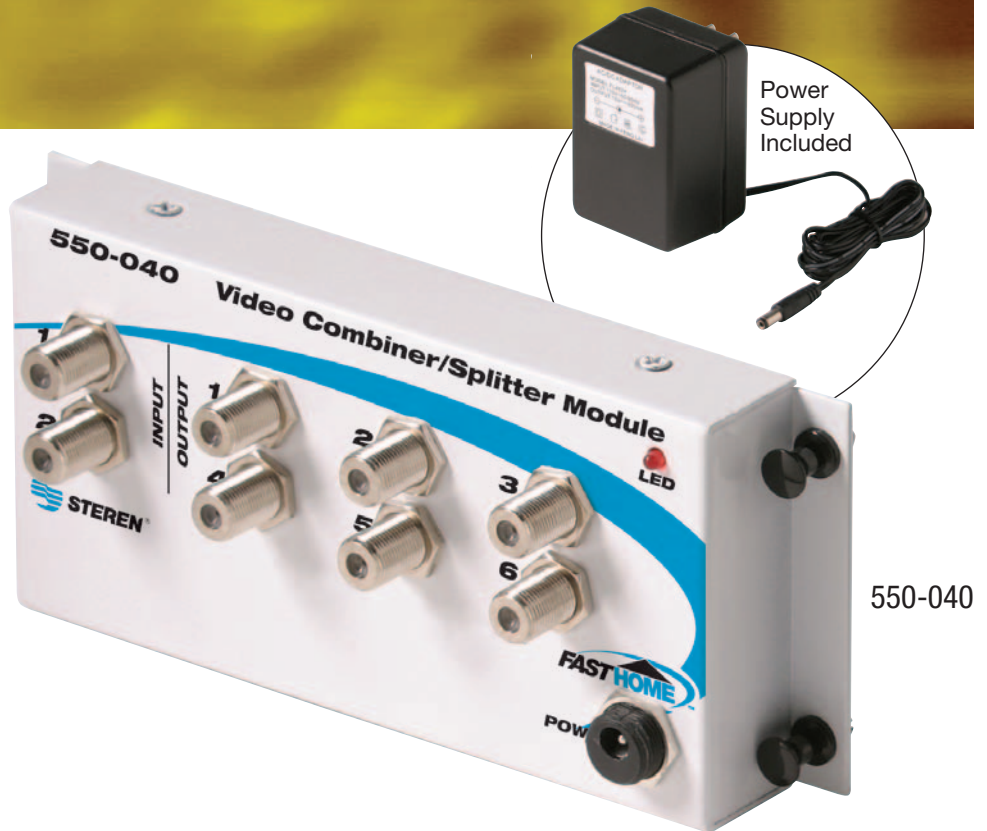
New Product Release



TV Combiner/Splitter Module

Home Network Systems

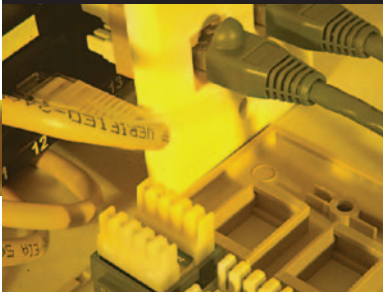
- Combines and distributes 2 incoming cable TV lines to 6 rooms
- Allows insertion of security camera feed from RF Modulator Module (550-080)
- Mounts in FastHome™ or similar enclosure
- Snaps into place without tools
- Features nickel-plated brass F81 ports
- Provides LED indicator for power on
- Includes a 9VDC 300mA power supply
- Dimensions:
6 1/2" (W) x 2 7/8" (H) x 1" (D)
- Also available: FastHome™ enclosures and phone, data, audio and power modules



Product Description

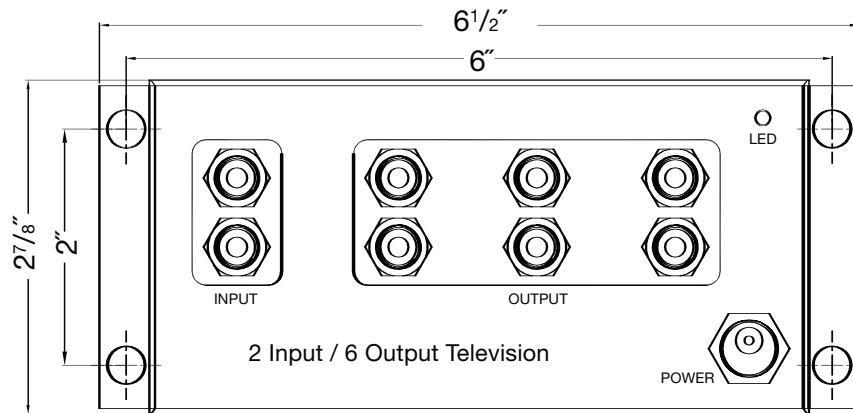
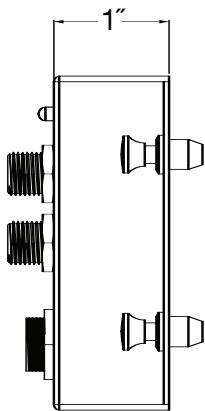
From a centralized location, the FastHome™ TV Combiner/Splitter Module combines and distributes 2 incoming cable TV lines to 6 rooms. The module allows for the insertion of security camera feed using the RF Modulator Module (550-080). Machined-brass F81 ports ensure long-lasting, reliable connections. This module features 18-gauge cold rolled steel construction for strength and excellent RFI shielding. It also offers a white textured powder-coated corrosion-resistant finish. Installation of the module in a FastHome™ enclosure is easy, as nylon pins snap the unit into place without tools.

PR-014



FastHome™ TV Combiner/Splitter Module

Specifications



Mechanical Construction

Body:

18-Gauge Cold Rolled Steel
 White Textured Powder-Coated Corrosion-Resistant Finish

Contacts and Ports:

F Contacts: Silver-Plated Beryllium Copper
 F Ports: Nickel-Plated Brass, 3/8"-32 UNEF
 Pins: Nylon, Black
 Power Supply: 9VDC 300mA

Electrical Properties

Input Frequency: 5~900MHz
 Insertion Loss: 0.0dB ±1dB
 Return Loss: 10dB min.
 Isolation: 20dB min.

Other FastHome™ Products

- 550-010** Telephone/TV Hub Module
- 550-020** Telephone Hub Module
- 550-030** Data Hub Module
- 550-050** Audio Splitter Module
- 550-060** Ethernet Switch Module
- 550-070** Power Module
- 550-080** RF Modulator Module
- 550-100** 11" Surface Mount Enclosure (7" W x 11" H x 3⁵/₁₆" D)
- 550-105** 19" Surface Mount Enclosure (14⁹/₁₆" W x 19" H x 4⁵/₁₆" D)
- 550-200** 19" Flush Mount Enclosure (14³/₈" W x 19" H x 3¹/₂" D)
- 550-205** 32" Flush Mount Enclosure (14³/₈" W x 32" H x 3¹/₂" D)
- 550-210** 44" Flush Mount Enclosure (14³/₈" W x 44" H x 3¹/₂" D)

Packaging

Each FastHome™ module is boxed individually.

Ordering Information:

550-040 FastHome™ TV Combiner/Splitter Module