



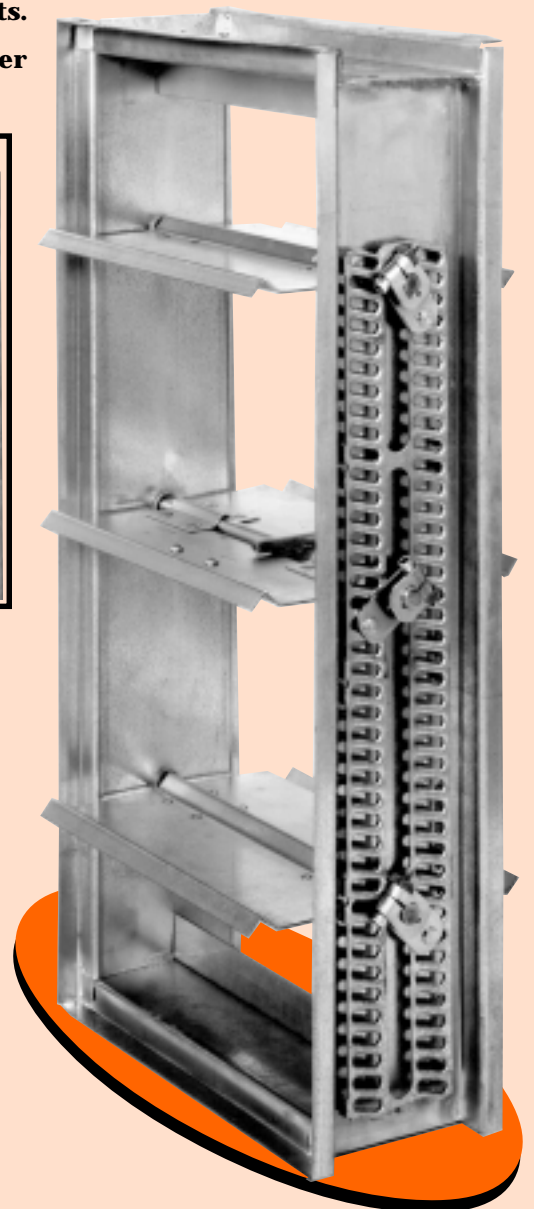
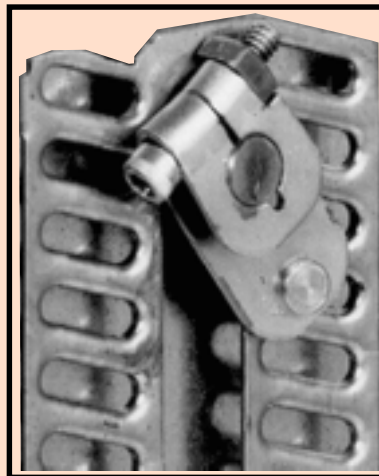
# SIDE-GLIDE<sup>TM</sup> SYSTEM

## Exclusively from Duro Dyne!

**Duro Dyne** has long been a pioneer in damper hardware. Parallel and opposed hardware sets featuring exclusive self aligning "Neva Bind" brackets, have been the preferred linkage for smooth reliable operation. Now Duro Dyne engineering has resulted in a breakthrough concept for side damper linkage.

Side damper linkage has many variations. Gears, chain and linkage rods are all typical methods of coordinating blade movement and each method has its own inherent disadvantages, such as cost, being difficult to assemble or adjust and the customization of parts.

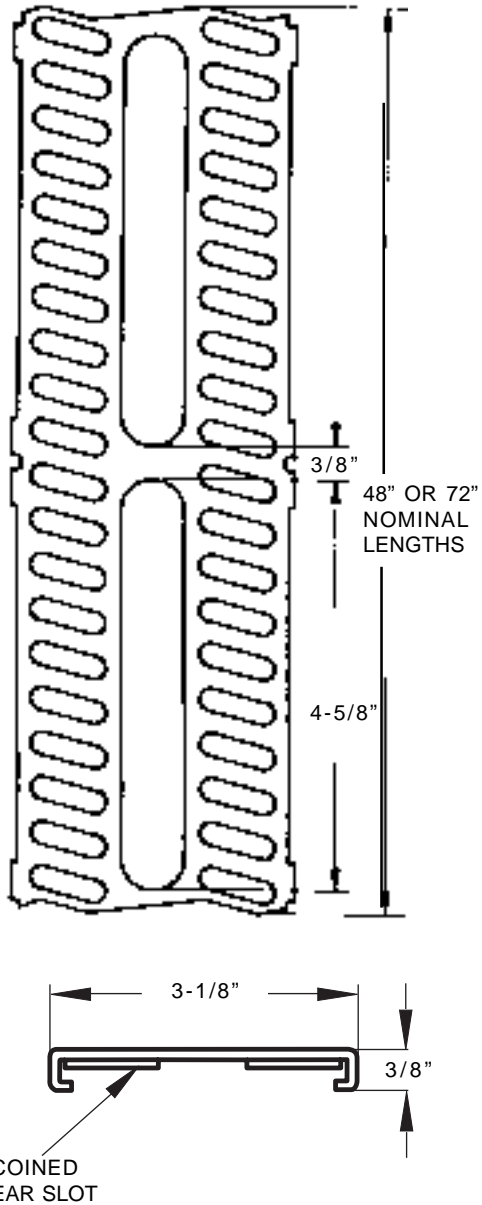
With Duro Dyne's new patented Side-Glide<sup>TM</sup> hardware damper blade linkage and adjustment becomes simple. Consisting of one standard linkage rail per damper and one linkage bracket per blade, assembly and adjustment is easy. It makes no difference whether you are making parallel or opposed blade dampers or varying the size of the blades; the rail and brackets are always the same.



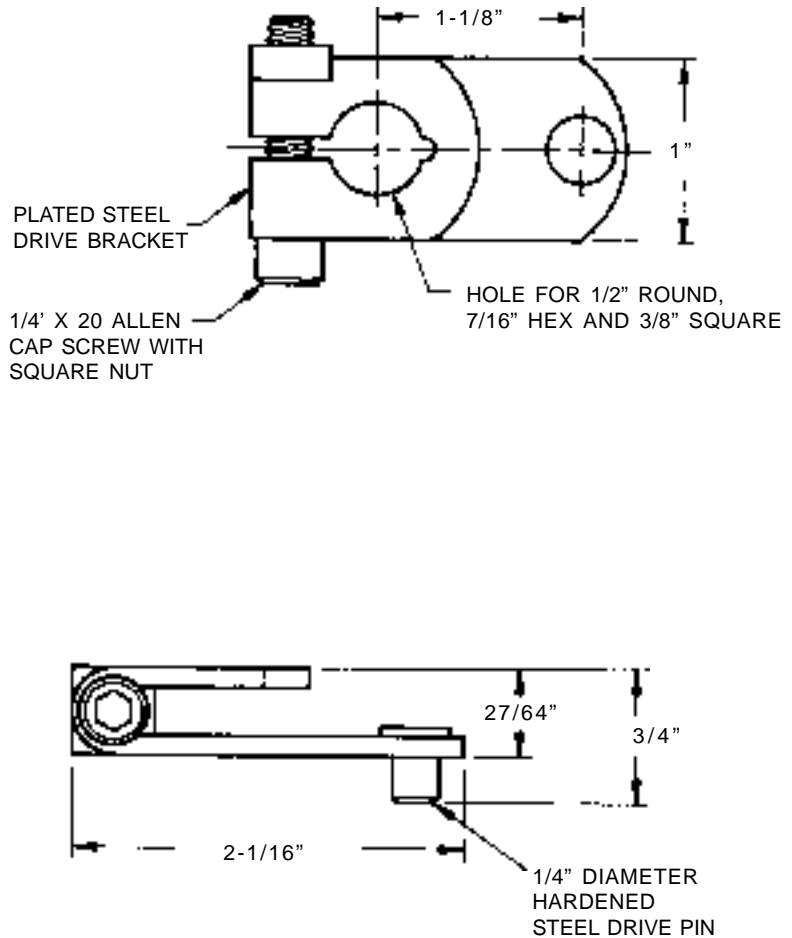
## KEY FEATURES

- Assemble damper linkage in seconds
- Fewer moving parts-less noise and adjustment
- Mix blade sizes on damper without special preparation
- Works with parallel or opposed blades
- Blades can be as small as 3"
- Fits 1/2" round, 7/16" hex or 3/8" square rod
- Rail available in 4' and 6' lengths
- Patents pending

# LINKAGE RAIL



# LINKAGE BRACKET



## SPECIFICATIONS

**Linkage Rail Material: 18 gage galvanized steel**

**Linkage Bracket Material: Minimum 18 gauge zinc plated cold rolled steel**

**Linkage Bracket Pin: Zinc plated case hardened steel**

**Damper Frame Requirements: Minimum depth-7/8" Minimum width-3-3/8"**

## ORDERING INFORMATION

PART#	CODE	DESCRIPTION	PACKAGING
2116	SDB	Linkage Bracket	100 per carton
2117	SDR-4	Linkage Rail-4 Foot	10 lengths per cartons
2118	SDR-6	Linkage Rail-6 Foot	10 lengths per cartons



DURO DYNE EAST  
130 ROUTE 110  
FARMINGDALE, NY 11735  
516-249-9000  
FAX: 516-249-8346

DURO DYNE MIDWEST  
3825 SYMMES ROAD  
FAIRFIELD, OHIO 45011  
513-870-6000  
FAX: 513-870-6005

DURO DYNE WEST  
15005 MARQUARDT AVENUE  
SANTA FE SPRINGS, CA 90670  
562-926-1774  
FAX: 562-926-5778

DURO DYNE CANADA  
5030 FRANCOIS-CUSSON  
LACHINE, QUEBEC, CANADA H8T 1B3  
514-422-9760  
FAX: 514-636-0328