

# SOLAR SAVE<sup>®</sup> ROOFING TILE

## ELEGANT, EFFICIENT, ECONOMICAL SOLAR POWER SYSTEMS

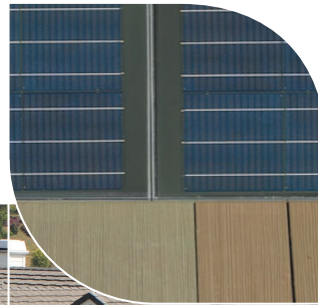
Open Energy's SolarSave<sup>®</sup> Roofing Tile is a unique product that maintains the natural look of your property while generating clean, safe, efficient electricity from the sun. The SolarSave<sup>®</sup> Roofing Tile product line is designed for residential or commercial sloped roofs, and photovoltaic tiles integrate with many standard roofing materials.

### BENEFITS AT A GLANCE

- Provides quiet and reliable power generation
- Maintains natural look and aesthetic appeal of the home
- Reduces pollution and green house gas emissions
- Significantly reduces monthly energy bills
- Provides a safe, secure, and sustainable energy solution
- Sizable rebates and tax incentives are available
- Bank your extra power with the local utility
- Maintenance free, state-of-the-art system
- Adds significant resale value to the property

### FEATURES AT A GLANCE

- Aesthetically pleasing and beautifully integrated
- Designed to integrate both with flat and S-Tile concrete roof systems
- Available in multiple colors
- Long term reliability and low maintenance costs
- Snow load capacity over 200 lbs per square foot
- Wind load rating up to 125 mph (with wind clip)
- Light weight, safe, and easy to install
- Provides a waterproof roof with no exposed roof penetrations
- Installs in accordance with roof tile institute standards
- Free internet based solar system monitoring for 10 years
- Tile Warranty: 10 years for 90% power output, and 25 years for 80% power output and no water intrusion
- Inverter Warranty: 10 years, the most reliable inverter available in the industry



SOLARSAVE® ROOFING TILE  
slate gray



MOST COMPATIBLE ROOF TILES



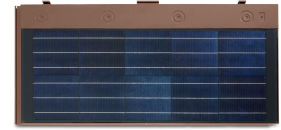
SOLARSAVE® ROOFING TILE  
brown



MOST COMPATIBLE ROOF TILES



SOLARSAVE® ROOFING TILE  
terracotta



MOST COMPATIBLE ROOF TILES



## TECHNICAL SPECIFICATION AT A GLANCE

Product description	High efficiency crystalline photovoltaic cells encapsulated in multi-layered lamination of glass, EVA, and Tedlar with polycarbonate frame.	
Color availability	Slate Gray, Brown, Terracotta; designed to integrate seamlessly with both flat and S tile concrete roof systems	
Installation weight	400 lbs. per 100 sq.ft., 12 lbs. per tile	
Roofing applications	New construction and retrofit; residential and commercial roofs; pitch 3:12 or greater	
Actual size	17" x 36" x 1"	
Exposed size	13.5" x 35" x 1"	
Weight	12 lbs.	
Connector type	Multi contact M/F	
Roofing information	Head lap: 3.5 in.	Exposure: 13.5 in.
Area per kWp (AC)	100 sq. ft.	
Nominal power (Pmax)	34 watts DC	
Max power current (Imp)	7.09A	
Max power voltage (Vmp)	4.80V	
Short circuit current (Isc)	7.76A	
Open circuit voltage (Voc)	6.07V	
Bypass diode	1 per tile	
Max. system voltage	600 Vdc	
Operating temperature	-40 to +160° F	

## WARRANTY

25-year warranty on 80% power output

## CERTIFICATIONS

Class A Fire Rated  
600 VDC

CSA certified to UL 1703  
FSEC Listed



2007 Winner of National Roofing Contractors Association's SpecRight Excellence in Design Award



2007 National Roofing Contractors Association's Gold Circle Nominee for Innovative Solutions: New Construction



For more information:  
www.openenergycorp.com  
1 888 779 4844  
sales@openenergycorp.com