

WAYNE® ENGINEERING CORPORATION



TomCat®

6 Yd & 10 Yd Satellite Side Loader

8 Yd, 12 Yd & 14 Yd Frame Mount (Bubble Tailgate)

The first manual satellite side-loader with No connecting linkages.

Product Features Folder

Engineering and Product Technical Document

Improving Performance and Customer Acceptance

TomCat Upgrades & Advantages

TOMCAT OVERVIEW

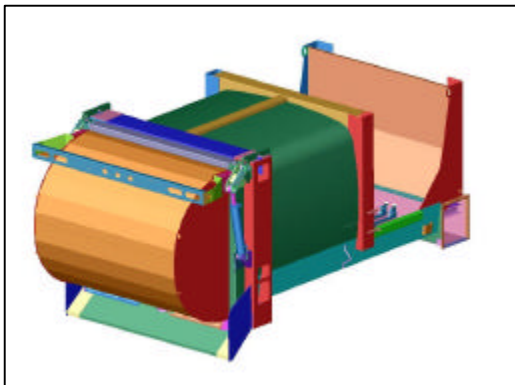
The TomCat is very maneuverable; is high compaction; has simultaneous load and pack capability; pack on the go efficiency; and can easily transfer the payload into a rear loader.
(The new TomCat is now the ultimate in high performance.)



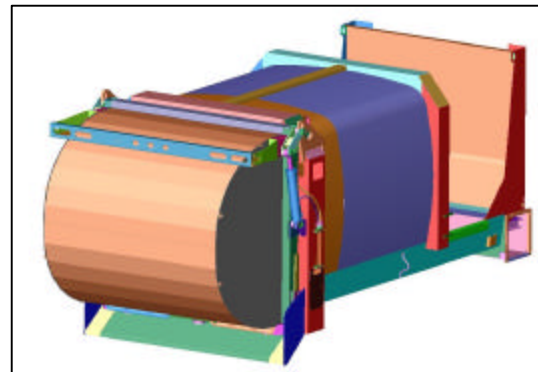
6 Yd Satellite with Cart Dumper



10 Yd Satellite with Cart Dumper
and Upper Hopper Door



8 Yd Side Loader w/ Bubble Tailgate
(Solid Works Drawing)



14 Yd Side Loader w/ Bubble Tailgate
(Solid Works Drawing)

TomCat Upgrades & Advantages

TomCat Body Specifications

Body Dimensions	Satellite SideLoader		Frame Mount SideLoader		
	TC6	TC10	TC8	TC12	TC14
Advertised Body Size	6 cu. yd.	10 cu. yd.	8 cu. yd.	12 cu. yd.	14 cu. yd.
Overall Length	148"	166"	156"	175"	193"
Approx. Body Weight	4,960 lbs.	5,400 lbs.	4,460 lbs.	5,550 lbs.	5,700 lbs.
Height Above Chassis Frame					
- Tailgate Closed	75"	88"	75"	88"	88"
- Body in Transfer Mode	100"	113"	n/a	n/a	n/a
Tailgate - Outside Width (For Transfer)	69-1/2"	69-1/2"	n/a	n/a	n/a
Body - Outside Width	79"	82"	79"	82"	82"
Loading Sill Height Above Frame	21"	21"	19"	19"	19"
Loading Area Width	31"	31"	31"	31"	31"
Top of Hopper Opening	46"	46"	46"	46"	46"
Dynamic Hopper Capacity (cu. yd./min)	4 cu. yd.	4 cu. yd.	4 cu. yd.	4 cu. yd.	4 cu. yd.
Practical Fillable Loading Volume	1 cu. yd.	1 cu. yd.	1 cu. yd.	1 cu. yd.	1 cu. yd.
Minimum Chassis Requirements					
Minimum GVWR	14,250 lbs.	19,000 lbs.	16,000 lbs.	22,000 lbs.	25,000 lbs.
Recommended CA	84"	108"	84"-102"	120"	120"

Features

- * Curved shell design – ultra-high strength-to-weight ratio
- * Low loading height- reduces worker fatigue
- * Loads from both sides – reduces loading time
- * Simultaneous load-and-pack – eliminates wasted time
- * Fast packing – fastest cycle time in the industry (14-16 sec.)
- * Standard 8" and 14" side doors – increases hopper capacity
- * No-fallback design – no need to double-pack
- * Curved tailgate – aids compaction, hinged for easy unloading
- * Tilt-for-transfer design – efficient satellite operation
- * Clean-out tray and doors – convenient side access
- * Meets all ANSI Z245.1 safety standards

Body Construction

- * Sides – 11 gauge 50,000 psi
- * Top – 11 gauge 50,000 psi
- * Floor – 3/16" AR 400

Hopper Construction

- * Sides – 3/16" T1
- * Floor – 3/16" AR 400
- * Packer Face Plate – 3/8" 50,000 psi

Hydraulic System

- Cylinders – all double acting
- * Pack – (2) 3" dia.
- * Eject – TC6 (1) 2.5" dia
TC10 (1) 3.5" dia.
- * Body Lift – TC6 & 8 (1) 4.5" dia.
TC10, 12 & 14 (2) 4.5" dia.
- * Tailgate – (2) 2.5" dia.

Pump – Gear Type

- * Capacity – 12 gpm @ 1,200 rpm
- * Maximum operating pressure – 3,500 psi

Hydraulic Tank

- * Capacity – 12 gallons
- * Location – upper front
- * Sight Gauge – on tank
- * Filter – 10 micron return line filter with by-pass valve

Optional Equipment

- * Strobe light
- * Cart dumpers
- * Hopper cover
- * Work lights
- * Rotating beacon

TomCat Upgrades & Advantages

The TomCat is Fast and Efficient

The TomCat can be loaded at any time - no matter where the pack panel is. It can pack between stops so there is NO WAITING - thanks to its multi-section floating follow plate. The follow plate rides on greaseless nylon rollers for smooth, reliable action during cycling.

- The packer has a fast 14-16 second auto pack cycle time.



1 Yd Hopper- Ready to load

- The Pack on the Go feature lets the operator drive between stops while the packer continues to pack and retract. The packer will finish in the home position with an empty hopper, ready for the next load.

- The low packer height and the hinged traveling cover allow for simultaneous load and pack. Even while the packer is packing, the operator can load.



Traveling Cover during packing



- Low Loading Height
- Manual loading of the TomCat is a breeze. The loading sill is 31" wide and only 21" above the frame rail

TomCat Upgrades & Advantages

Satellite Transfer Capability



6 Yd Transferring into a rear-loader

The TomCat can transfer its entire payload into any standard rear loader in just minutes. Simply pull the handles at the rear of the body to raise the body into position, lift the tailgate and eject the load.

Strong, Curved, Hinged tailgate design is all about function.

- High Compaction- promoting garbage to actually roll, reducing stress on the body and increasing payload compaction.
- Simple Transfer- the swinging weight of the lower section helps to meter the garbage into the rear-loader during transfer.



Body raised -Tailgate Open



Tailgate Closed

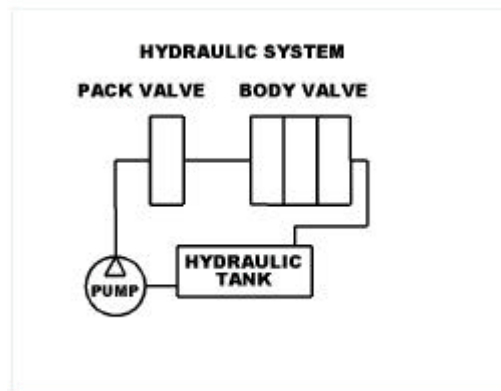
- Easy Opening- The hinge allows the lower door section to swing open and not bind on the garbage
- Resists Dents and Dings- The reinforced panels are designed to resist dinging and stay looking good.
- Positive Seal- The door is pressed against the seal for a tight interface.

TomCat Upgrades & Advantages

Manual Operating Controls

Simple to Understand- Simple to Use

The TomCat is now controlled with simple manual hydraulic valves. One pack valve and one body valve.



Hydraulic Reservoir

The packing function uses a single manual detented valve. Once engaged, the pack valve automatically packs and returns in one complete auto-cycle motion in only 14-16 seconds.



Detented Pack Valve

The body lift, tailgate and eject functions are controlled by a single three-section, direct-acting manual valve located at the left rear of the body.



Manual Body Valve- 3 Sections

TomCat Upgrades & Advantages

Manual Controls With No Linkages

Reliable, No adjustments, Less mess

The TomCat's revolutionary manual control system has no linkages. This means no more greasing, adjustments or repairs.



Left side of body



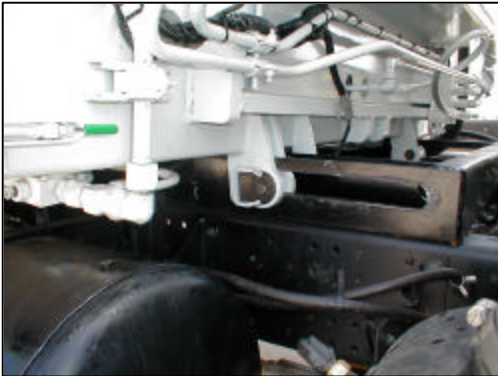
Right side of body with cart dumper

The linkages are replaced by a hydraulic check valve. This check valve lets the rear eject control operate the pack extend and retract circuit.

TomCat Upgrades & Advantages

Easy & Convenient Body Lift

The TomCat's body under-structure provides for a more stable, safe and easier to mount interface between body and chassis.



Front Pivot Pin with slotted guide

- The front pivot design now includes the pivot on the body. The slot is integral in the under structure. The body slides rearward on the pivot pin and nests into a depression in the end of the slot, to hold it in position.



Rear Lift cylinder with body guides

- The body lift cylinder slides the body rearward and lifts the rear of the unit to mate the TomCat to the rear loader.

The lift design “locks in” the body for payload transfer, preventing interference with the chassis during positioning.

New in-cab control box is simple and easy to operate.

Control box features 3 fused toggle switches:

- Main System On/Off
- Strobe Light On/Off
- Work Light On/Off

Two Indicator Lights:

- PTO Engaged Light
- Tailgate/Body Open Light



The TomCat has only 3 electrical switches. All are solid-state proximity switches

- One lets you know the tailgate is closed
- One lets you know the body is down
- One turns on the engine speed up

TomCat Upgrades & Advantages

Performance Engineered

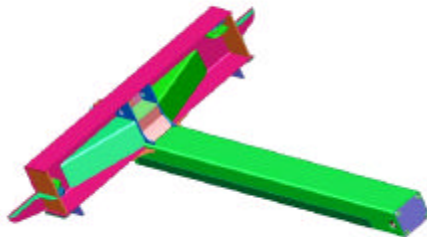


- Ultra high strength, wear resistant floor: Constructed of 3/16" AR 400 ultra high strength wear resistant steel.
- The TomCat floor will never wear out and there are no slide blocks to change. The slide blocks are AR 400 and are designed not to need changing.

- 11-gauge high-strength curved-shell body: Extremely strong, lightweight, looks great, and packs tons, packing up to 900 pounds per cubic yard.



- Engineered for the Ultimate in performance: The TomCat is designed using Solid Works™ solid modeling CAD (Computer Aided Design) and FEA (Finite Element Analysis). The most advanced engineering tools are utilized to ensure the TomCat performs year after year.



Solid Works Solid Modeling



FEA Finite Element Analysis

TomCat Upgrades & Advantages

Hopper Doors

TomCats come standard with an 8” high swinging door on both sides of the body. These doors are handy for increasing hopper capacity and eliminating spillage.



Closed Position



Open Position

An additional 14” upper hopper door is available as an option to be installed above the 8” standard door.

Clean Out Doors

Large, sealed, leak-free clean - out doors are located on both sides of the hopper and are top - hinged for easy access and clean up.



Open Position



Closed Position

TomCat Upgrades & Advantages

Options



Cart Dumper



Custom Imaging



Hopper Cover



Strobe Lights



Work Lights



With over 40 years in operation, Wayne Engineering Corporation is providing the solid waste industry worldwide with innovative garbage trucks. Founded by Wayne H. Worthington and Stan Worthington in 1961, WAYNE began operations with one product, the CargoMaster, a semi trailer mounted bridge crane designed for material handling application. Today, WAYNE is a leader in the refuse industry with a full line of Automated Side-Loader bodies and an arsenal of manual side and rear loaders from the small 6 yard PUP to the powerful 25 yard PowerLynx. With a professional staff of over 100 employees and a nation-wide authorized distribution network, we are proud to offer our full product line:



- **Curbtender Automated Side-Loader:** 16 to 31 yds
- **PowerLynx High Compaction Rear-Loader:** 12 to 25 yds
- **Royal GT Medium Compaction Rear-Loader:** 10 to 16 yds
- **Super Series Small Rear-Loader:** 6 & 8 yds
- **TomCat Side-Loader:** 6 to 14 yds
- **Pup Small Side-Loader:** 6 yds
- **AutoCat Automated Side-Loader:** 10 to 14 yds

701 Performance Drive, Cedar Falls IA 50613

Phone: 319-266-1721 Fax: 319-266-8207

www.WayneUSA.com

Illustrations and/or specifications published herein are informational in nature and shall not be construed to warrant suitability of the unit for any particular purpose, as individual performances may vary. WAYNE ENGINEERING CORPORATION, reserves the right under its Product Improvement Program to, without notice, modify construction and/or design and furnish equipment that varies from the illustrations or specifications contained herein. Except as specifically provided for in WAYNE ENGINEERING CORPORATION New Equipment Warranty, there are no other warranties, expressed or implied, including not limited to the implied warranty of merchantability and the implied warranty of fitness for a particular purpose, which are hereby disclaimed.