

Sanymetal Partitions

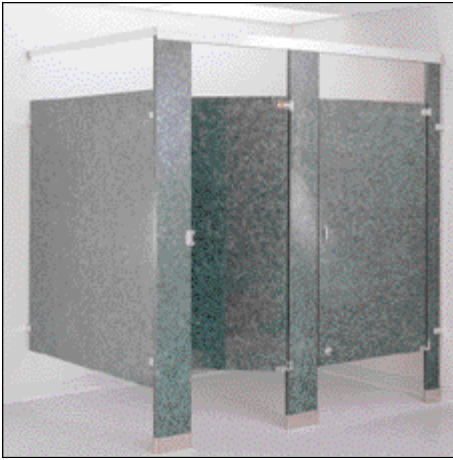


Sanymetal Partitions

Sanymetal has two major manufacturing facilities to meet the bathroom partition needs of its customers, throughout the U.S. In addition to its 150,000 square foot production facility in Somerset, Kentucky, Sanymetal has expanded its operation with a 54,000 square foot production facility in the City of Industry, California.

Sanymetal continues to offer its customers even greater production capacity, improved quality control and more responsive customer service.

Rely on Sanymetal for all your bathroom partition needs. Sanymetal has everything you need: style, colors, finishes, and solutions to meet special requirements such as ADA.



Academy



Normandie



Century

	ACADEMY	CENTURY	NORMANDIE	SPECIAL	PHYSICALLY CHALLENGED*
SANYACRYLIC	✓	✓	✓	✓	✓
SANYSTAINLESS	✓	✓	✓	✓	✓
SANYPLASTIC	✓	✓	✓	✓	✓
SANYPHENOLIC	✓			✓	✓
SANYPOLY	✓			✓	✓

*Sanymetal makes a full line of partitions that conform to ADA

Sanyacrylic

(Baked Enamel) Thermosetting acrylic finish on galvanized-bonderized steel provides real economy along with high resistance to corrosion, grease, acids, caustics, mars, and stains. Available in all styles and a full spectrum of contemporary colors. Any two colors (for contrasting doors and pilasters) may be combined.

Sanyplastic

Sanyplastic offers all the proven advantages of a high-pressure laminate system. The smooth surface is highly-resistant to scratches, grease and mars and is available in a full range of colors. Sanyplastic partitions feature Sanymetal's concealed, level-ride, power hinge and surface-mounted latch.

Sanystainless

Sanystainless is the ultimate in metal-smithing. Sanymetal 304-#4 finish stainless steel toilet compartments offer a lifetime of beauty without deterioration. Available in all styles and features recessed, smooth flush hinges and latches. For rigidized stainless, see page 9.

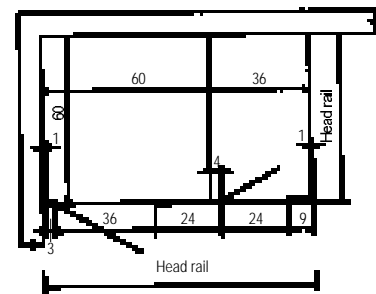
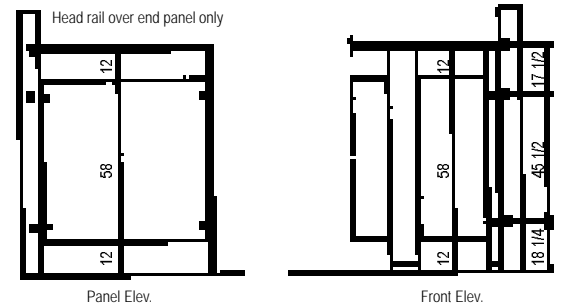
Sanypoly

Solid polymer offers the advantages of high resistance to scratches, stains, common acids and cleaning agents as well as to moisture, steam and corrosion. Available in Academy and floor-to-ceiling styles only.

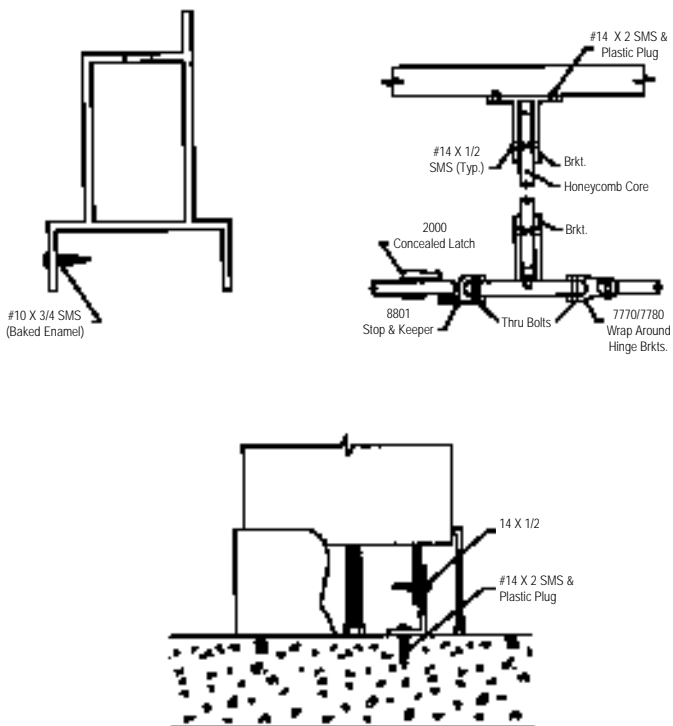
Sanyphenolic

Solid Phenolic Core material is strong, corrosion-proof, and non-absorbent. Solid Phenolic Core will not delaminate even under severe moisture conditions. All surfaces are smooth, easy-to-clean, and available in a full array of colors. Available in Academy, and floor-to-ceiling styles only.

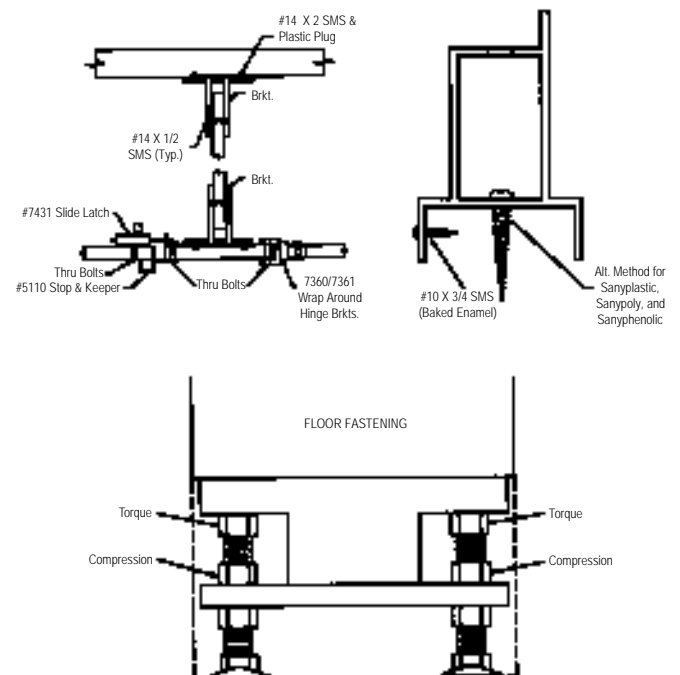
Academy



Sanyacrylic/Stainless

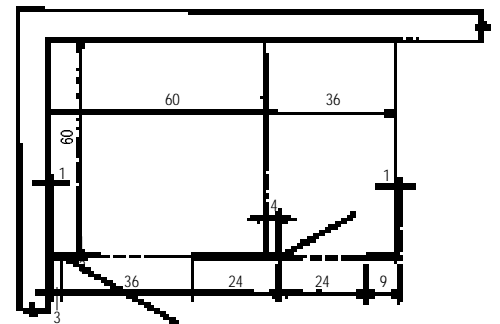
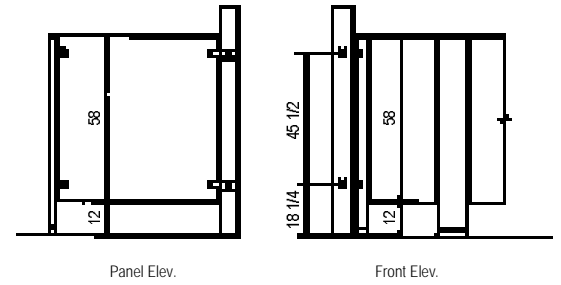
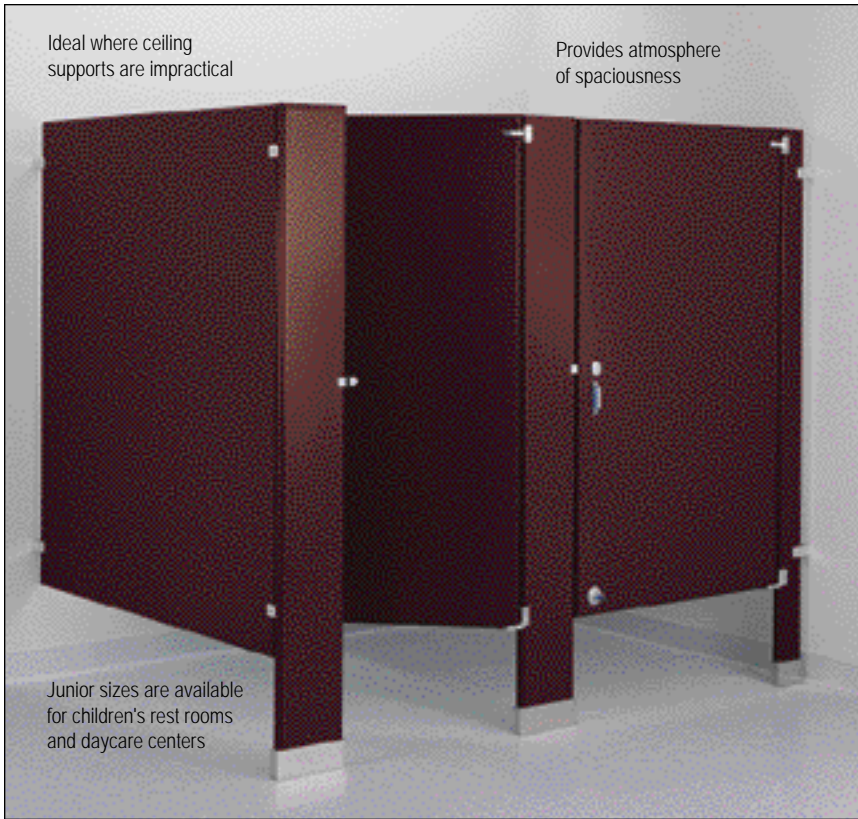


Sanyplastic

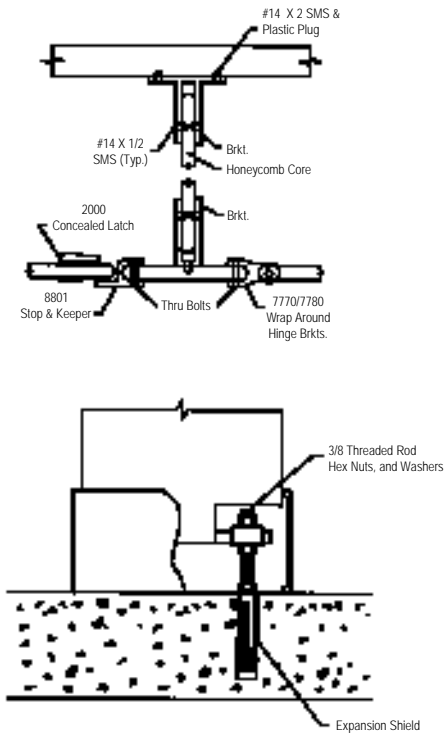


Normandie*

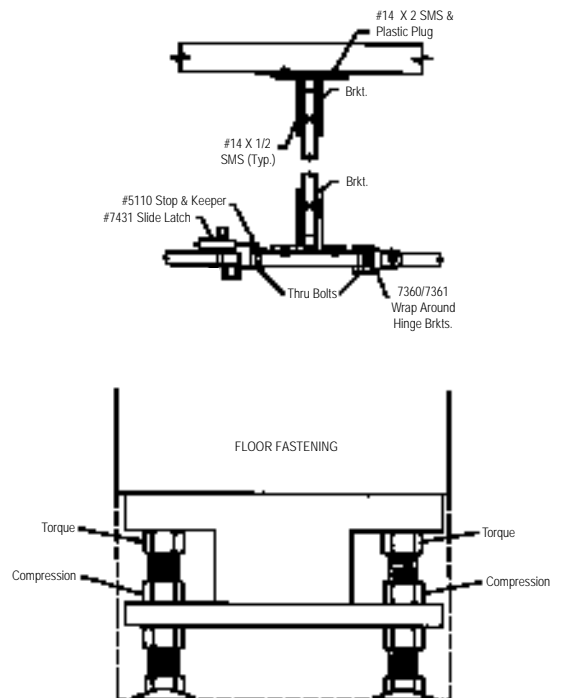
*A solid floor surface is required as rigidity depends on floor fastenings



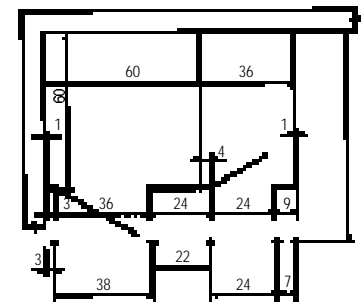
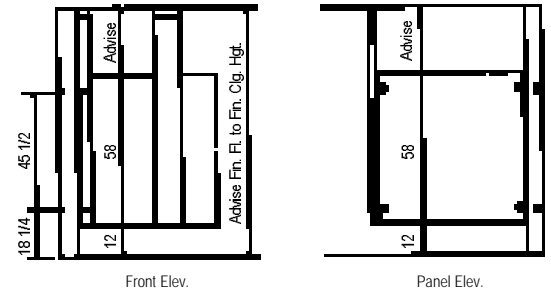
Sanyacrylic/Stainless



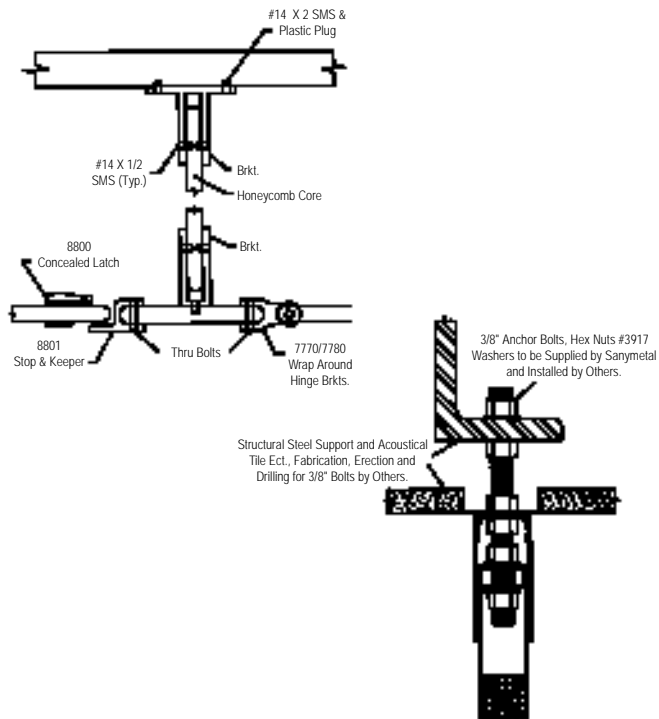
Sanyplastic



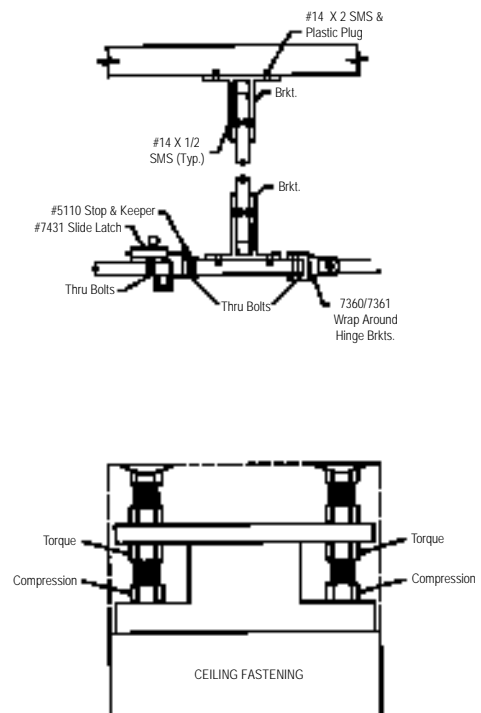
Century



Sanyacrylic/Stainless



Sanyplastic

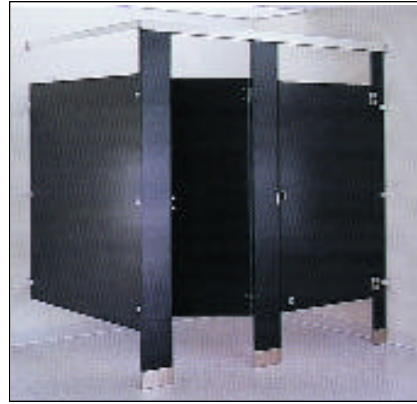




Sanyphenolic

(Solid Phenolic Core)

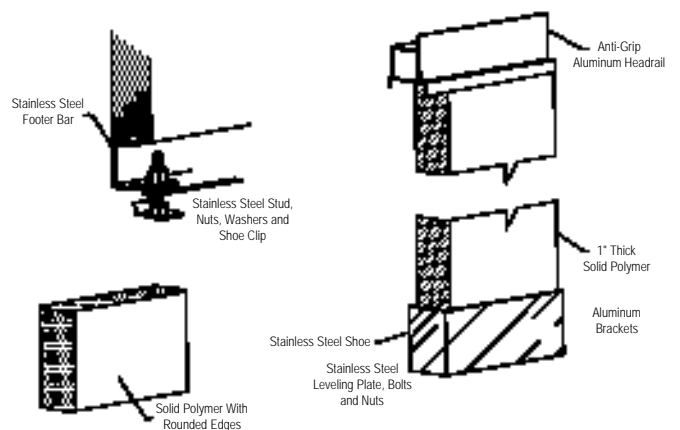
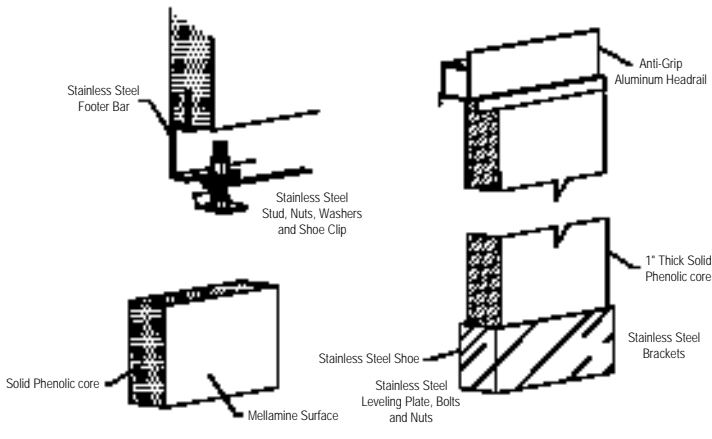
Sanyphenolic panels, doors, and pilasters are strong, rigid, and non-absorbent. Panels will not delaminate, even under severe moisture, hose-down, or steam conditions. Dressing room, shower compartment, and toilet partitions feature 1/2" thick panels, 1" pilasters, and 3/4" doors. All hardware, latches and pilaster base assemblies are stainless steel. Compartment seats are Sanyphenolic with stainless steel brackets. Overhead bracing features aluminum headrail and integral curtain track with hooks. All surfaces are smooth, easy-to-clean finishes. Any unit may combine any two colors. Specify colors by material, number and name. Complete Sanyphenolic specifications are available.



Sanypoly

Sanypoly is a non-metallic, high-density polymer material that combines strength and rigidity with these advantages: non-corrosive, impact resistant, non-absorbent to moisture, odors, mildew; no peeling or delamination. Sanypoly is ideal for restrooms, locker rooms, dressing compartments, shower stalls and special installations requiring strength and beauty in high-traffic areas. Panels, doors and pilasters are 1" thick with smooth, rounded edges...solid homogeneous color with a self-lubricating surface. Available in overhead-braced units, shower stalls and benches. Specifications and color samples available on request.

SEE PAGE 12 FOR CUSTOM-CRAFTED HARDWARE



Standard Dimensions

COMPARTMENTS:

Width: 32, 34, and 36"-60" center-to-center

Depths: 48, 54, 57, 60, 62*, 66*, 72*, 78**

Partition and door height: 58"

Distance from floor to bottom of partitions and doors: 12"

Floor to top of partitions and doors: 70"

Overall from floor to top of headrails: 82"

PILASTER WIDTHS:

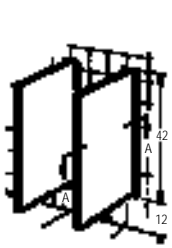
3, 4, 5, 6, 7, 8, 9, 10, 12, 14, 18, and 24" (and 1 1/4" post)

DOOR WIDTHS:

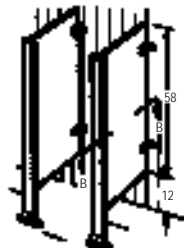
For door openings 22, 24, 26, 28, 32, 34, 35 and 36"

*All Sanymetal panels, Stainless steel or baked Enamel, larger than 60" depth are reinforced for additional strength and rigidity

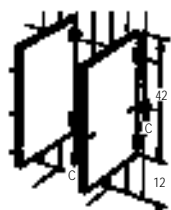
urinal screens



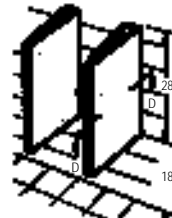
TYPE A
Wall hung flush



TYPE BX
Floor supported type



TYPE C
Wall hung, bracket supported

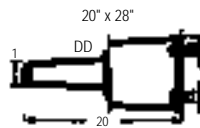
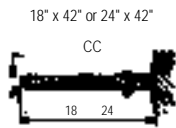
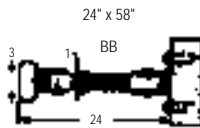
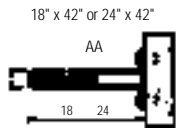


TYPE F
Wedge type



No-sway Urinal Screen Footer (die cast) BX urinal screen pilaster base uses two screws horizontally to prevent sway. Extra strength, easy installation, long life. Type BX and C available in all materials.

Standard Sizes



Short Form Specifications

GENERAL

Urinal screens shall be type, color and materials as designated, and as manufactured by Sanymetal, Somerset, KY/City of Industry, CA.
Type: (Specify Type A, BX, C or F)

MATERIAL

Baked Enamel: (Type A, BX, C)

Panels shall be 1" thick made of two sheets of #22 gauge galvanized-bonderized stretcher-leveled steel, or .032 stainless steel, type 304 and #4 finish and assembled over and cemented under pressure to a dense sound-deadening Bridgcore insulation. The two face plates of the panel shall have formed edges sealed with a continuous oval-crown locking strip, mitered, welded and finished at corners.

Type BX Only

Pilasters shall be made of #20 gauge galvanized-bonderized steel, roll formed with concealed lock seam, 1 1/4" thick and 3" in width. Pilasters shall be attached to the floor construction with a heavy, one-piece cast alloy non-ferrous shoe, 3" high with polished chrome-plated finish. Pilaster to be attached.

Type F:

Panels shall be #20 gauge, galvanized-bonderized stretcher leveled steel or .032 stainless steel, type 304 and #4 finish. Panel sheets shall have formed edges with the edges welded together spaced at not more than 8" intervals. Oval-crown locking strip to seal front vertical edges of panel with top and bottom cap, applied by interlocking two sheets mitered, welded and finished at corners to vertical front locking bar. Panels shall be insulated with corrugated board cemented to panel sheets. Bearing surface at wall shall be minimum of 4" wide and panel shall be attached to wall with concealed wedge-type anchorage. A minimum of six screws shall be used for attachment of panel anchor plate to the wall and shall be approximate for type of wall construction. Panels shall be mounted on wall without any exposed fastenings.

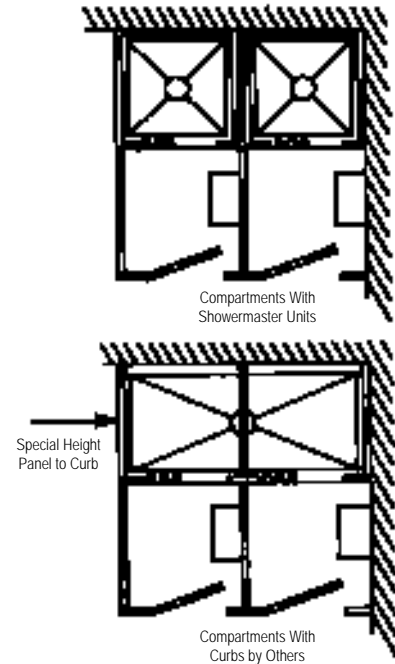
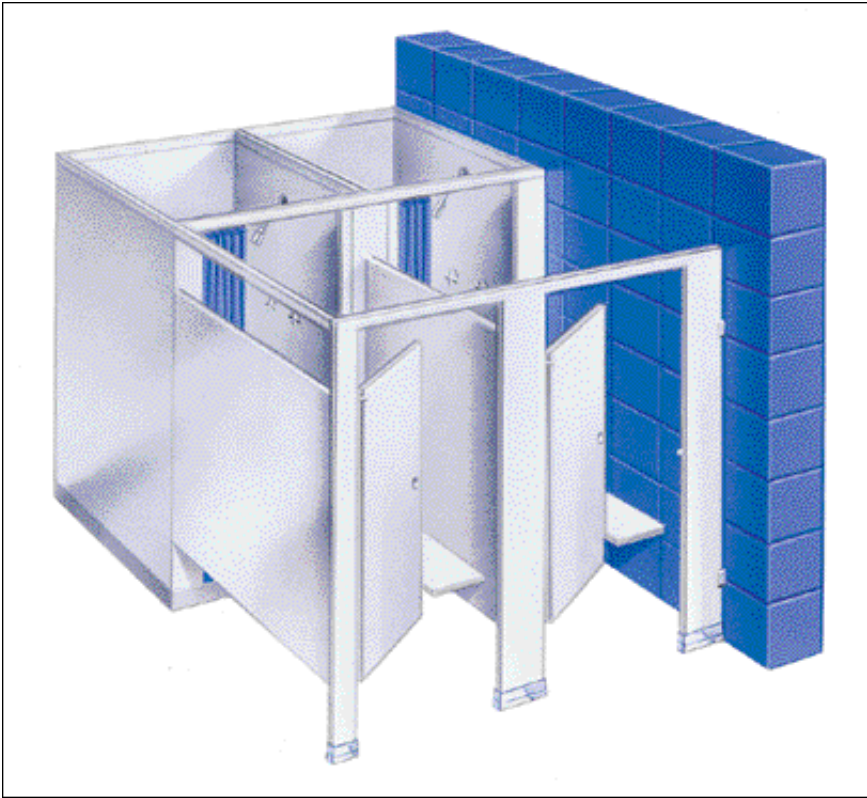
Fittings: (TYPE C)

Partitions shall be attached to the wall with two stirrup brackets 3 1/2" long.

Finish: (Types A, BX, C, F)

All units shall be chemically cleaned and finish shall consist of a rust-inhibited coated material and a finish color coat of thermo-setting acrylic enamel applied electrostatically and baked on to produce a uniform, smooth, lustrous protective finish.

special shower/dressing compartment installations



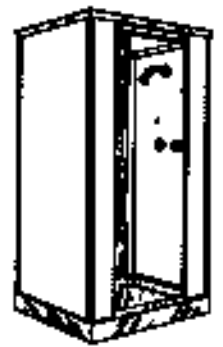
Shower Master Shower Stalls

Available in Sanyphenolic, Sanypoly, Sanystainless, Sanyacrylic. Curtain or shower door options. Sizes: 32" x 32" x 82" or 36" x 36" x 82" with pre-cast, terrazzo receptor. Wheel chair accessible 39" x 39" and 60" x 30" terrazzo receptors available upon request.

Specify:
Showermaster
stall with door.

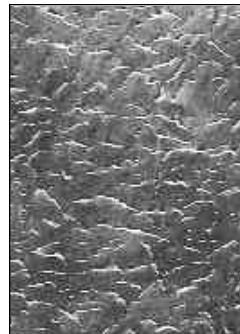


Specify:
Showermaster
stall with curtain.



Rigidized Stainless Steel

Rigidized Stainless steel is a textured finish featuring all the benefits of Sanymetal's standard 304-#4 finish stainless steel plus the ability to withstand extreme high-traffic usage without showing wear. Rigidized stainless steel comes available in all styles and comes with Sanymetal's #5 Texture. This sheet stainless steel is only available in 48" widths; all panels over 48 inches will have a thin, internally welded seam running vertically on the panels. Also available is the 5WLPattern. 5WL sheets are available in 60" widths. Stall depths up to 60" are available without the vertical seam using the 5WLPattern. This material offers excellent life cycle costs without showing any deterioration, smears or fingerprints.



#5 Texture



5WLPattern

short form specifications

Sanymetal offers design opportunity...a method to specify and order the type, materials, colors and combinations to meet your criteria for strength, corrosion resistance, in-place costs and design.

	Baked Enamel	Stainless Steel
1 TYPE	<p>1: Academy toilet compartments shall be Acrylic Coated Academy type as manufactured by Sanymetal.</p> <p>Century toilet compartments shall be Acrylic Coated Century type as manufactured by Sanymetal.</p> <p>Normandie toilet compartments shall be Acrylic Coated Normandie type as manufactured by Sanymetal.</p>	<p>1: Academy toilet compartments shall be stainless steel Academy type as manufactured by Sanymetal.</p> <p>Century toilet compartments shall be stainless steel Century type as manufactured by Sanymetal.</p> <p>Normandie toilet compartments shall be stainless steel Normandie type as manufactured by Sanymetal.</p>
2 DOORS	<p>2: Shall be 1" thick with two sheets of #22 gauge Galvanized-Bonderized steel enclosing sound-deadening Bridgecore. All formed edges shall be welded and sealed with a surrounding oval-crown locking strip.</p> <p>Standard door size, other than "handicapped" is 24".</p>	<p>2: Shall be 1" thick with two sheets of #22 gauge, 304 18-8 stainless steel enclosing sound-deadening Bridgecore. All formed edges shall be welded and sealed with a surrounding oval-crown locking strip.</p> <p>Standard door size, other than "handicapped" is 24".</p>
3 PANELS	<p>3: Academy, Century and Normandie shall be 1" thick with two sheets of #22 Galvanized-Bonderized steel enclosing sound-deadening Bridgecore. All formed edges shall be welded and sealed with a surrounding oval-crown locking strip.</p>	<p>3: Academy, Century and Normandie shall be 1" thick with two sheets of #22 gauge, 304 18-8 stainless steel enclosing sound-deadening Bridgecore. All formed edges shall be welded and sealed with a surrounding oval-crown locking strip.</p>
4 PILASTERS	<p>4: Academy pilasters shall be 1 1/4" thick with two sheets of acrylic coated #20 gauge Galvanized-Bonderized steel welded and finished as specified for Baked Enamel doors. Pilasters bases shall be attached with floor stirrups and leveling bolts to secure for anchorage. Pilaster tops shall be overhead braced the full perimeter of the installation with 1" x 1 1/2" anodized aluminum anti-grip headrail bracing.</p> <p>Century pilasters shall be 1 1/4" thick with two sheets of #18 gauge, Galvanized-Bonderized steel welded and finished as specified for baked enamel doors. Pilasters to be secured with 3/8" bolts to overhead member (by others) in accordance with details shown on page 6. Not recommended for ceiling heights exceeding 9'0".</p> <p>Normandie pilasters shall be 1 1/4" thick with two sheets of #18 gauge, Galvanized-Bonderized steel welded and finished as specified for baked enamel doors. Pilasters to be secured with 3/8" bolts and expansion shield in accordance with details shown on page 5.</p>	<p>4: Academy pilasters shall be 1 1/4" thick with two sheets of #20 gauge, #304 18-8 stainless steel welded and finished as specified for Stainless doors. Pilasters bases shall be attached with floor stirrups and leveling bolts to secure for anchorage. Pilaster tops shall be overhead braced the full perimeter of the installation with 1" x 1 1/2" anodized aluminum anti-grip headrail bracing.</p> <p>Century pilasters shall be 1 1/4" thick with two sheets of #18 gauge, stainless steel welded and finished as specified for Stainless doors. Pilasters to be secured with 3/8" bolts to overhead member (by others) in accordance with details shown on page 6.</p> <p>Normandie pilasters shall be 1 1/4" thick with two sheets of #18 gauge, stainless steel welded and finished as specified for baked enamel doors. Pilasters to be secured with 3/8" bolts and expansion shield in accordance with details shown on page 5.</p>
5 HARDWARE	<p>5: a. Top hinge pin shall be secured at three points with all doors hinge fittings fully flush with face plates of the door.</p> <p>b. Each door shall be equipped with chrome plated cast alloy coat hook and bumper, Sanymetal concealed latch #2000 with bolt of stainless steel permitting exterior access, a one piece chrome plated stop and keeper and #7961 concealed controlled power bearing gravity hinge.</p> <p>c. The door shall be adjustable to permit rest position at any angle within a 270° arc and the weight at all times shall be carried by a power bearing with all moving parts concealed within the door thickness.</p> <p>d. Pilaster hinge brackets shall be chrome-plated zamac alloy and thru-bolting to the pilaster.</p> <p>e. Floor and ceiling connections shall be concealed with a one piece 304 stainless steel theftproof plinth.</p> <p>f. Chrome-plated zamac stirrup brackets shall be used to attach panels and pilasters.</p>	<p>5: a. Top hinge pin shall be secured at three points with all chrome-plated door hinge fitting fully flush with face plates of the door.</p> <p>b. Each door shall be equipped with chrome plated cast alloy coat hook and bumper, Sanymetal concealed latch # 2000 with bolt of stainless steel permitting exterior access, a one-piece chrome plated stop and keeper and number 7961 concealed controlled power bearing gravity hinge.</p> <p>c. The door shall be adjustable to permit rest position at any angle within a 270° arc and the weight at all times be carried by a power bearing with all moving parts concealed within the door thickness.</p> <p>d. Pilaster hinge brackets shall be chrome-plated zamac alloy and thru-bolting to the pilaster.</p> <p>e. Floor and ceiling connections shall be concealed with one piece 304 stainless steel, theftproof plinth.</p> <p>f. Chrome-plated zamac stirrup brackets shall be used to attach panels and pilasters.</p>
6 FINISH	<p>6: Finish shall consist of base metal coating and a finish color coat of thermo-setting acrylic enamel applied electrostatically in a pressurized, dust free atmosphere, baked on to produce a uniform, smooth lustrous protective finish.</p>	<p>6: All stainless steel units shall be #4 finish and shall be paper covered for protection during shipment and installation.</p>
7 COLOR	<p>7: Colors shall be.....(Sanymetal number and color name). (Any two colors for contrasting pilasters/panels and doors may be specified.)</p>	<p>7: Colors shall be 304 stainless steel, #4 finish.</p>
8 CERTIFICATION	<p>8: A certificate of compliance shall be attesting that all materials are in accordance with Sanymetal's preceding specifications.</p>	<p>8: A certificate of compliance shall be attesting that all materials are in accordance with Sanymetal's preceding specifications.</p>

Specify the design type (Section 1), select the material for doors, panels and pilasters from Section 2, 3 and 4. For example: Sanyplastic panels can be installed with steel pilasters; stainless steel panels with baked enamel pilasters or; normal homogeneous materials can be used depending upon preference.

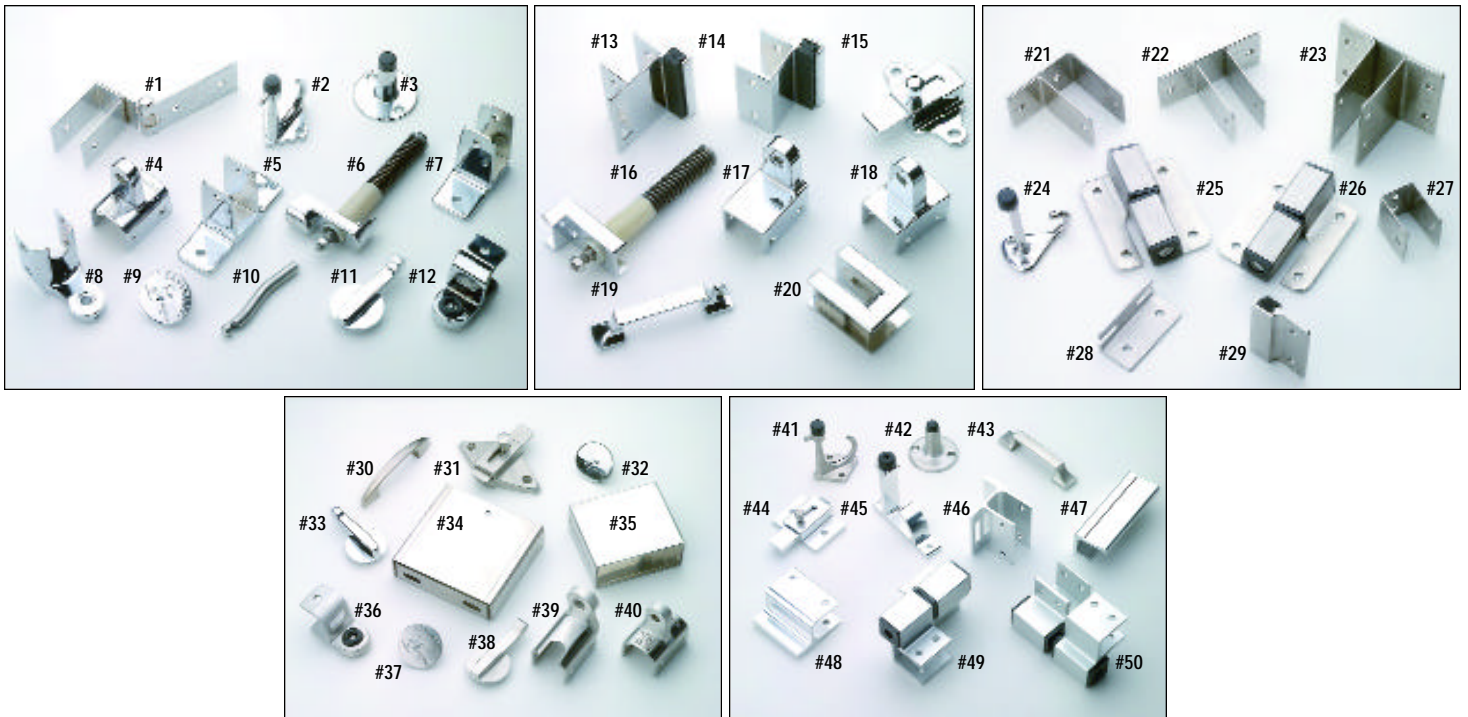
Possible combinations are virtually unlimited for top performance, durability, lowest maintenance and proven Sanymetal value.

Complete specifications available on request.

Sanyplastic	Sanyphenolic	Sanypoly
<p>1: Academy toilet compartments shall be Plastic Laminate Academy type as manufactured by Sanymetal.</p> <p>Century toilet compartments shall be Plastic Laminated Century type as manufactured by Sanymetal.</p> <p>Normandie toilet compartments shall be Plastic Laminated Normandie type as manufactured by Sanymetal.</p>	<p>Academy toilet compartments shall be Solid Phenolic Core (SPC) Academy type as manufactured by Sanymetal.</p> <p>Century not recommended</p> <p>Normandy not recommended</p>	<p>1: Academy toilet compartments shall be Solid Polymer Academy type as manufactured by Sanymetal.</p> <p>Century not recommended</p> <p>Normandy not recommended</p>
<p>2: Shall be constructed of Industry Standard plastic laminate NEMA approved, laminated under heat and pressure to a solid 45 lb. Density flakeboard core. Finished Doors shall be 1" thick.</p> <p>Standard door size, other than "handicapped" is 24".</p>	<p>2: Shall be 3/4" thick solid phenolic core with high pressure melamine color surface on faces. Edges shall be burnished and slightly rounded.</p> <p>Standard door size, other than "handicapped" is 24".</p>	<p>2: Doors shall be 58" high, 1" thick, single component construction, Solid Polymer.</p> <p>Standard door size, other than "handicapped" is 24".</p>
<p>3: Shall be 3/4" thick and of the same construction, finish and performance standards as for Sanyplastic doors (section 2 above).</p>	<p>3: Academy shall be 1/2" thick solid phenolic core with high pressure melamine color surface on faces. Edges shall be burnished and slightly rounded.</p>	<p>3: Panels shall be 58" high, 1" thick, single component construction, Solid Polymer.</p>
<p>4 Pilasters: Sanyplastic Academy pilasters shall be 1 1/4" thick of same construction, finish and performance as for Sanyplastic doors. Pilasters should be secured to floor by means of a 1/4" thick anchor bar mechanism and shall be secured and leveled by using 3/8" bolts and nuts-tension/compression mounted. Pilasters shall be braced with extruded, anodized aluminum anti-grip headrail and wall return.</p> <p>Century pilasters shall be 1 1/4" thick of the same construction, finish and performance as for Sanyplastic doors. Pilaster shall be secured to overhead support member (furnished by others), by means of 1/4" thick anchor bar mechanism, and shall be secured and leveled by using 3/8" bolts and nuts-tension/compression mounted. Steel core pilasters recommended for ceiling heights exceeding 8'6".</p> <p>Normandie pilasters shall be 1 1/4" thick of same construction, finish and performance as for Sanyplastic doors. Pilasters shall be secured to floor by means of 1/4" thick anchor bar mechanism and shall be secured and leveled by using 3/8" bolts and nuts-tension/compression mounted.</p>	<p>4: Academy shall be 1" thick solid phenolic core with high pressure color surface on faces. Edges shall be burnished and slightly rounded.</p> <p>Headrail shall be heavy duty aluminum extrusions, anodized with anti-grip configuration, and shall be fastened to the pilaster tops.</p>	<p>4: Pilasters shall be 82" high, 1" thick, single component construction, fitted with an 11 gauge stainless steel footer for attachment to min. 3/8" floor studs and expansion shields.</p> <p>Headrail shall be heavy duty aluminum extrusions, anodized with anti-grip configuration, and shall be fastened to the pilaster tops.</p>
<p>5: Doors: Shall be equipped with Sanymetal #6101 top hinge recessed into door 2" from top with pin supported in door above and below top hinge bracket. Lower hinge shall be Sanymetal #6100 controlled power bearing consisting of Zytel cams under spring tension. Door weight shall be carried by power bearing only, not on the cams. Door cycling shall be on a level plane and shall be operable and adjustable to any angle within a 270° arc.</p> <p>Brackets: For panels and pilasters shall be chrome-plated zamac.</p> <p>Operation: A power bearing shall carry the door weight. All moving parts shall be concealed within the 1" door thickness.</p> <p>Accessories: Attachment and Construction. Hinge brackets shall be non-ferrous chrome plated stirrup type attached to the pilaster by means of through bolts. Top hinge bracket shall be Sanymetal #7361, bottom hinge bracket to be Sanymetal #7360.</p> <p>Door keeper and stop shall be Sanymetal, chrome plated No. 5110 rubber bumper locked into place. Door latch shall be Sanymetal No. 7431 non-ferrous, chrome plated slide latch. Pilaster base shall be 3" high, No. 304 stainless steel, polished finish to conceal floor (or ceiling) connections.</p>	<p>5: Hinges shall be fabricated from 11 gauge stainless steel, one piece leaf, for surface mounting. Hinge shall be equipped with one piece 3/8" stainless steel pintle extending the full height of the hinge. Upper and lower hinge are to both be cam operated, with the one piece pintle: Sanymetal #7280/81.</p> <p>Coat hook and bumper to be cast stainless steel #7810.</p> <p>Door strike and keeper shall be cast stainless steel. Sanymetal #7320/7321.</p> <p>Door latch to be slide type cast stainless steel. Sanymetal #7331.</p> <p>Bracket for wall and partition attachment shall be 14 gauge stainless steel.</p> <p>Pilasters shall be attached to the floor by means of an 11 gauge stainless steel footer, with provisions for leveling, attached to two 3/8" diameter stainless steel studs set into expansion shields. The floor connection are to be covered by a 4" high stainless steel shoe, #4 finish.</p>	<p>5: Hinges shall be aluminum wrap-around nylon cam operated type, consisting of 4" hinges adjustable to return door to desired degree of opening. Hinge shall have one piece 3/8" stainless steel pintle running the full length of the hinge. Three hinges provided at handicap doors, two provided at standard doors.</p> <p>Coat hook & bumper to be aluminum #8267.</p> <p>Door strike & keep shall be aluminum #8269 (inswing), #8270 (outswing).</p> <p>Door latch to be slide type, aluminum #7831.</p> <p>Panel brackets to wall pilasters to be heavy duty aluminum, anodized and polished with 3 brackets per connection: (Optional) Full height aluminum brackets with mill finish can be specified if required.</p> <p>Pilaster shoe 4" high stainless steel shoe #4 finish.</p> <p>(Optional) Heatstrips to be applied to the bottom edges of panels and doors is available in aluminum.</p>
<p>6: All units shall be made of Sanyplastic plastic laminate. All directional pattern panels larger than 57 1/4" will have horizontal grain, unless vertical splicing is required.</p>	<p>6: Melamine color surface on material face, edges burnished.</p> <p>All wood grain panels larger than 57 1/4" will have horizontal grain.</p>	<p>6: Panels, doors and pilasters shall be fabricated from Polymer resin, which forms a single component section, waterproof and non-absorbent, with a self-lubricating surface.</p>
<p>7: Color shall be from current Sanyplastic color section. Any two colors may be combined.</p>	<p>7: Color shall be selected from the manufacturer's high pressure Sanyplastic color chart. The colors available shall be the same as offered for Sanyplastic partitions.</p>	<p>7: Color shall extend throughout the entire thickness of all the components. Colors shall be selected from the manufacturer's standard polymer colors.</p>
<p>8: A certificate of compliance shall be attesting that all materials are in accordance with Sanymetal's preceding specifications.</p> <p>Use of this product in showers or areas subject to hose-down maintenance is not recommended. Sanymetal recommends rust-proof Phenolic, or Stainless Steel for these environments.</p>	<p>8: A certificate of compliance shall be attesting that all materials are in accordance with Sanymetal's preceding specifications.</p>	<p>8: A certificate of compliance shall be attesting that all materials are in accordance with Sanymetal's preceding specifications.</p> <p>Sanymetal provides a one-year warranty against workmanship and defects-not against inherent physical characteristics of the solid polymer material such as sagging/warpage due to lack of rigidity.</p>

Note: Sanymetal reserves the right to improve, modify, or change its material and specifications at any time in such a manner as it may consider necessary or advisable, and to discontinue the manufacture and sales of any product without notice.

hardware



Additional hardware is available, contact Sanymetal for information.
Always have the following information ready: type and thickness of material, finish of hardware.

- | | | |
|---|---|--|
| 1. 9025 Hinged Stirrup Bracket for 1" Panel | 18. 7361 Chrome-Plated Top Hinge Bracket | 36. 8801 Stainless Steel Stop & Keep Pilasters |
| 2. 7810 Chrome-Plated Coat Hook & Bumper | 19. 7401 Chrome-Plated Pull Assembly | 37. 2018 Stainless Steel Escutcheon |
| 3. 5034 Chrome-Plated Door Bumper | 20. 6101 Chrome-Plated Top Hinge Casting | 38. 2019 Stainless Steel ADAHandle |
| 4. 7780 Chrome-Plated Stirrup-Type Top Hinge Bracket | 21. 6760 Stainless Steel 1.25" Pilaster Bracket | 39. 7770 Stainless Steel Stirrup-Type Bottom Hinge Bracket |
| 5. 1750 Chrome-Plated Two Ear Bracket for 1" Panel | 22. 6724 Stainless Steel 1" Internal Panel Bracket | 40. 7780 Stainless Steel Top Hinge Bracket |
| 6. 7961 Chrome-Plated Bottom Hinge Assembly | 23. 7724 Stainless Steel 1" Double-Height Double-Eared Bracket | 41. 7810 Stainless Steel Coat Hook & Bumper |
| 7. 1760 Chrome-Plated Single-Eared Bracket for 1" Panel | 24. 7810 Stainless Steel Coat Hook & Bumper | 42. 5034 Stainless Steel Bumper |
| 8. 7770 Chrome-Plated Stirrup-Type Bottom Hinge Bracket | 25. 7280 Stainless Steel L.H. Inswing #2 Hinge | 43. 7401 Stainless Steel Pull |
| 9. 2018 Chrome-Plated Escutcheon | 26. 7281 Stainless Steel R.H. Inswing #1 Hinge | 44. 7831 Aluminum Side Latch |
| 10. 2017 Stainless Steel Pin Required With 2018 | 27. 6723 Stainless Steel 1" U-Panel | 45. 8267 Aluminum Coat Hook |
| 11. 2019 ADAHandle | 28. 7321 Stainless Steel Inswing Keeper | 46. 8269 Aluminum Stop & Deep |
| 12. 8801 Chrome-Plated Stop & Keep | 29. 7320 Stainless Steel Stop | 47. 8268 Aluminum Door Pull |
| 13. 5110 Inswing Stop & Keep for 7431 | 30. 7301 Stainless Steel Pull Handle | 48. 8270 Aluminum Outswing Keeper |
| 14. 5210 Outswing Stop & Keep for 7431 | 31. 7331 Stainless Steel Side Latch | 49. 8780 Aluminum R.H. Outswing/L.H. Inswing Hinge |
| 15. 7431 Chrome-Plated Slide Latch | 32. 8818 Chrome-Plated Escutcheon w/out Logo | 50. 8781 Aluminum L.H. Outswing/R.H. Inswing Hinge |
| 16. 6100 Chrome-Plated Bottom Door Hinge Assembly | 33. 8819 Chrome-Plated ADAHandle | |
| 17. 7360 Chrome-Plated Bottom Hinge Bracket | 34. 7200 Stainless Steel 4" Pilaster Shoe for Poly & Phenolic Pilasters | |
| | 35. 3900 Stainless Steel 3" Pilaster Shoe Baked Enamel | |
| | 3600 Stainless Steel 3" Pilaster Shoe for Plastic Laminate Pilasters | |

Note: Aluminum door hardware is for Sanypoly material only



www.sanymetal.com

2780 South Hwy. 1247 • Somerset, KY 42501-3302 • Phone 606/678-2700 • Fax 800/832-7994
17025 E. Gayle Ave. • City of Industry, CA91745 • Phone 626/964-3475 • Fax 626/912-2310