

**No Lead Wall Mount
Sensor-Operated Hands-Free®
Barrier-Free Water Cooler
Models EIOA4 and EIOA8**

ELKAY®

SPECIFICATIONS

GENERAL

Self-contained, wall hung electric refrigerated water cooler. Capacity, 50°F drinking water, based upon 80°F inlet water and 90°F ambient.

Models EIOA4 and EIOA8 sensor-operated coolers have unique Hands-Free® operation and automatic flow regulator to provide constant stream from 20 to 105 psi. Includes sensor overhang bottom cover plate.

Non-pressurized tank system is standard. Non-pressurized water tank is located after bubbler valve, so that tank is subject to line pressure only when sensor is activated.

THIS WATER COOLER COMPLIES WITH THE REQUIREMENTS OF A.D.A. (AMERICANS WITH DISABILITIES ACT) WHEN PROPERLY INSTALLED.

NO LEAD DESIGN

THIS WATER COOLER COMPLIES WITH THE LEAD-FREE DEFINITION IN THE SAFE DRINKING WATER ACT OF 1986 AND LEAD CONTAMINATION CONTROL ACT OF 1988.

Elkay Water Coolers are manufactured with a waterway system utilizing copper components and completely lead-free materials. These waterways have no lead because all lead materials, such as leaded brass, have been removed. All joints are brazed using silver solder only. No lead solder is permitted. A strainer with an easily cleanable screen is provided to allow trapping and convenient removal of water born particulate of 140 microns or larger prior to their entry into the water cooler.



This water cooler is classified by Underwriters Laboratories Inc. in accordance with **ANSI/NSF61, Section 9-1997b.**

CAPACITIES CHART

Model Number	Base Rate	*GPH of 50°F Drinking Water			Rated Watts	Full Load Amps	Glass Filler Option	Ship. Wt. Lbs.
		Room Temperature °F						
		70°F	80°F	90°F				
EIOA4	4.0	5.0	4.4	4.0	325	3.7	No	74
EIOA8	8.0	9.6	8.8	8.0	325	3.7	No	74

*Based on 80°F inlet water temperature.

Rated watts shown are based on operational (run) time, in accordance with A.R.I. Standard 1010 conditions. Specific applications will determine the actual watts consumed per hour. Watts consumed will be based on number of people served per hour (usage), ambient temperatures, and inlet water temperature.

COOLING SYSTEM

Motor Compressor: Hermetically sealed, reciprocating type, 115V, 60 Hertz single phase. Sealed in lifetime oil supply. Equipped with electric cord and three prong molded rubber plug.

Condenser: Fan cooled, copper tube with aluminum fins. Fan motor is permanently lubricated.

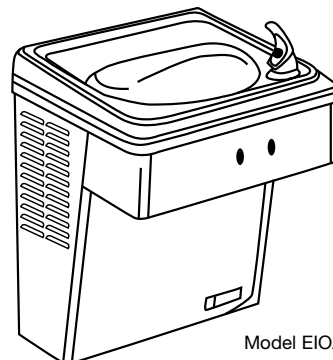
Cooling Unit: Combination tube-tank type. Self cleansing. Tube portion is continuous coil of copper tubing. Fully insulated with EPS foam which meets Underwriters Laboratories Inc. requirements for self extinguishing plastic material.

Refrigerant Control: Refrigerant HFC-134a is controlled by accurately calibrated capillary tube for positively trouble free performance.

Temperature Control: Enclosed adjustable thermostat is factory preset. Requires no adjustment other than for altitude requirement. Easily accessible.

CONSTRUCTION

Frame: Galvanized structural steel chassis supports fountain top and all working mechanisms. No operating parts are connected to cabinet panels.



Model EIOA8

Fountain Top and Backsplash: Type 304 one piece stainless steel top, polished to a uniform Elkay satin luster finish. Basin has integral drain grid, embossed bubbler pad.

Exclusive Flexi-Guard® Safety Bubbler®: Innovative design utilizes a pliable elastomer to prevent accidental mouth injuries. Flexes on impact, then returns to original position. Strong. Abrasion-resistant. Anti-sweat. Meets UL requirements and all sanitary codes.

Electronic Sensor Operation: On-Off solenoid valve is actuated by an infra-red light beam sensor. When light beam is interrupted by subject in front of cooler desiring a drink, the sensor actuates the solenoid valve which then opens to allow water to flow. No physical contact with cooler is required. A built in time delay is provided to prevent actuation by persons moving past cooler. There is a maximum running time of 30 seconds to prevent malicious damage to the cooler or water damage if sensor vision is blocked. Unit automatically resets when blockage is removed. Sensor range is adjustable.

Color Selection: Unless otherwise specified cabinet is Gray Beige vinyl. Other cabinet colors are available at no extra cost. Colors include: Granite, Sandalwood and Natural Almond. Stainless Steel and Bronzestone units available at extra cost.

Bronzestone Cleaning Note: Be sure to clean bronze finish surfaces with only a mild detergent or vinegar and water. Rinse well with clean water and wipe dry with a soft cloth. Any misuse or abrasion can eventually damage the bronze finish.

Cabinet: Cabinet design allows for flush to wall mounting. No recess space is required.

5 YEAR LIMITED WARRANTY on the refrigeration system of the unit. Electrical components and water system are warranted for 12 months from date of installation. Sample Certificate available on request.

Elkay Pressure-Type Water Coolers are designed to operate on 20 psi to 105 psi supply line pressure. If inlet pressure is above 105 psi, a pressure regulator must be installed in the supply line. Any damage caused by reason of connecting this product to supply line pressures lower than 20 psi or higher than 105 psi is not covered by the warranty.

Note: In keeping with our policy of continuing product improvement, Elkay reserves the right to change materials, design and specifications without notice.

Elkay Electric Air Cooled Water Coolers are listed by Underwriters Laboratories Inc., approved by C.S.A., rated in accordance with A.R.I. Standard 1010 and meet all known federal and state plumbing codes.



** Patent #4,481,971

Elkay Manufacturing Company

www.elkay.com

2222 Camden Court
Oak Brook, IL 60523

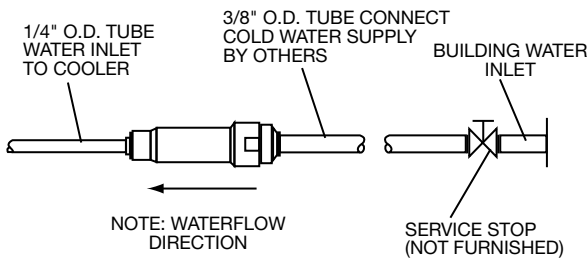
Printed in U.S.A.
©2001 Elkay Mfg. Co.

(Rev. 5/01) 12-41

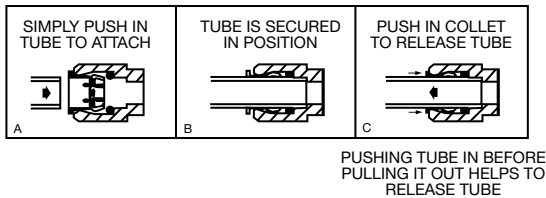
**No Lead Wall Mount
Sensor-Operated Hands-Free®
Barrier-Free Water Cooler
Models EIOA4 and EIOA8**

ELKAY®

ROUGH-IN DIMENSIONS



OPERATION OF QUICK CONNECT FITTINGS



Open space rough-in design permits new installation or replacement of existing fountains and coolers with this Elkay cooler when rough-in is within the outline shown. The location available is from 14-3/4" to 30-1/4" from floor when cooler is mounted as shown, and from 1-3/8" to 7-7/8" left of centerline. Additional area is available at upper right as shown, however direct access forward from wall is restricted and should only be considered for use until after an examination of the cooler has been made.

**IMPORTANT!
INSTALLER PLEASE NOTE:**

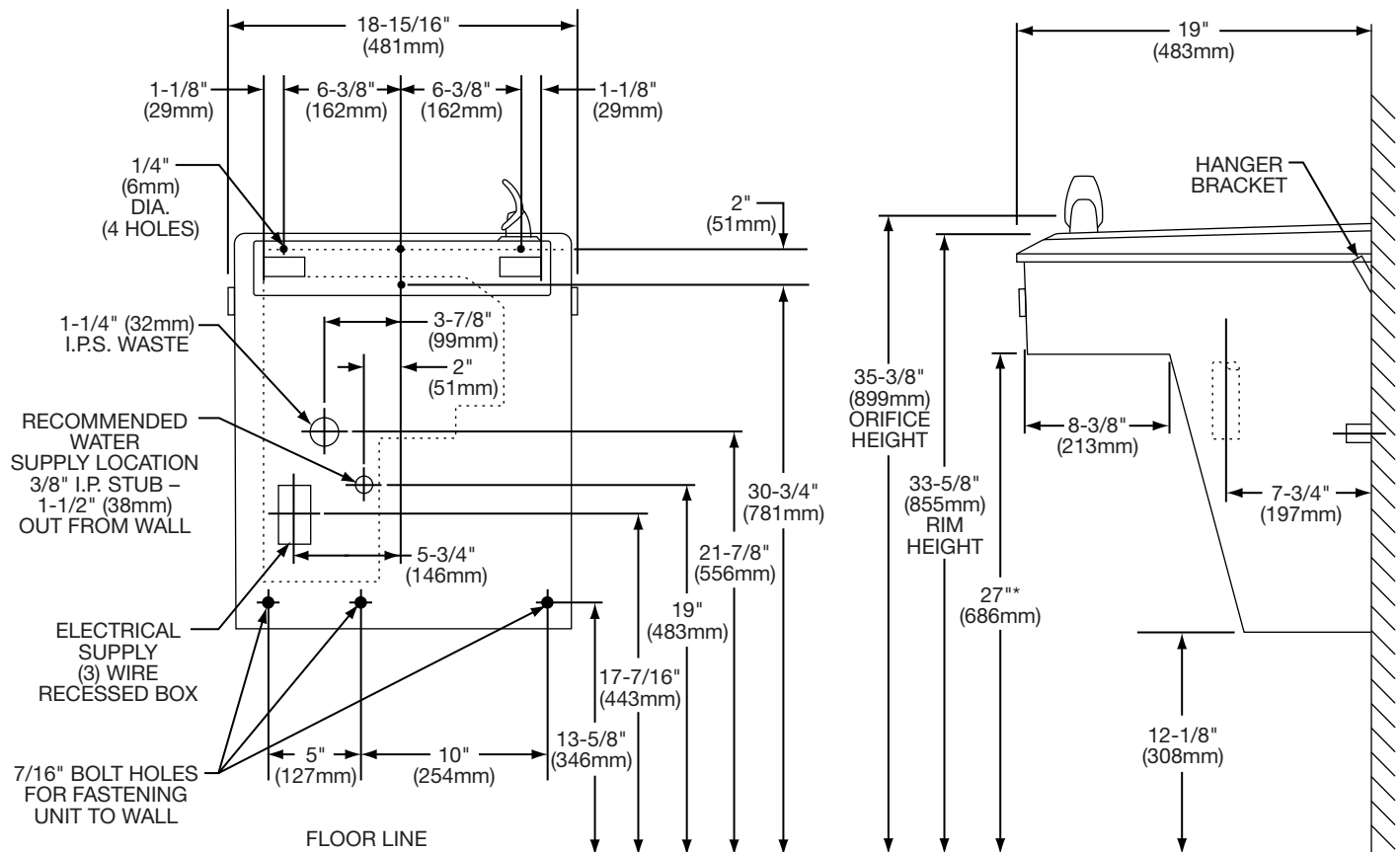
This water cooler has been designed and built to provide water to the user which has not been altered by materials in the cooler waterways.

The grounding of electrical equipment such as telephone, computers, etc., to water lines is a common procedure. This grounding may be in the building but may also occur away from the building. This grounding can cause electrical feedback into a water cooler creating an electrolysis which creates a metallic taste or causes an increase in the metal content of the water. This condition is avoidable by installing the cooler using the proper materials as shown below.

NOTICE

This water cooler must be connected to the water supply using a dielectric coupling. The cooler is furnished with a non-metallic strainer which meets this requirement.

The drain trap which is provided by the installer should also be plastic to completely isolate the cooler from the building plumbing system.



NOTE: A service supply stop should be installed at the cooler inlet tube.

*ADA REQUIREMENT

NOTE: Insure proper ventilation by maintaining 6" (152mm) clearance from cabinet louvers to wall on each side of cooler.