

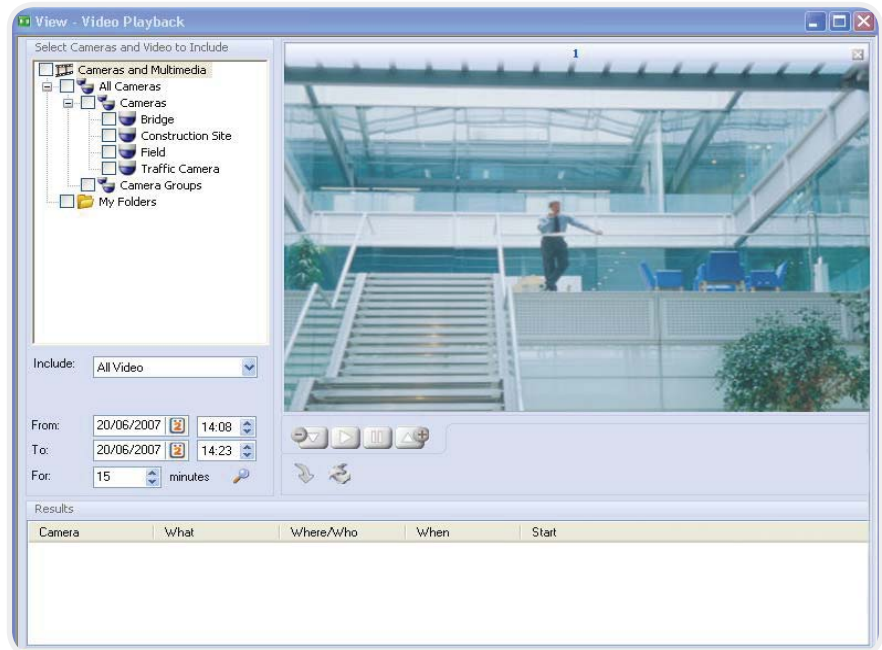
System Overview

The Symmetry™ Security Management System (SMS) software provides a comprehensive range of fully-integrated additional software modules.

The following gives a brief overview of the optional modules. For further information, please refer to the individual data sheets.

Key Benefits

- Greater levels of efficiency, flexibility and effectiveness
- Automates and improves site security
- Provides integration with:
 1. CCTV systems
 2. Intercom systems
 3. Intrusion panels
 4. Building Management Systems (via BACnet®)
 5. Other databases e.g using Symmetry XML Open Integration Module
 6. LDAP/Active Directory
- Enables all security management equipment to be controlled from a single user interface
- Reduces training costs



Digital Video and CCTV Management

- Provides integration with Symmetry ENVIS, IP Cameras and market leading DVR and NVRs
- Provides complete control of cameras
- Enables alarms to generate index points on recordings for easy replay of alarm incidents
- Video Identity Verification feature enables comparison of live and stored card-holder images
- Automatic camera triggering with scheduled and conditional commands

Symmetry Threat Level Manager (TLM™)

- Enables the level of security to be easily changed to match the level of threat
- Supports five fully-customizable threat levels
- Provides selective access control, depending on the threat level
- Provides compatibility with Government threat-level security policies

Intrusion Interface

- Provides integration with DMP, HI SEC and DSC® intrusion alarm panels
- Alarms detected by the panels cause alarms to be displayed in the Symmetry™ Security Management System (SMS) Software
- Enables complete alarms monitoring from a common user interface
- Two-way communication allows the SMS to control alarm panels
- Conditional commands give automatic control of external equipment when an alarm occurs

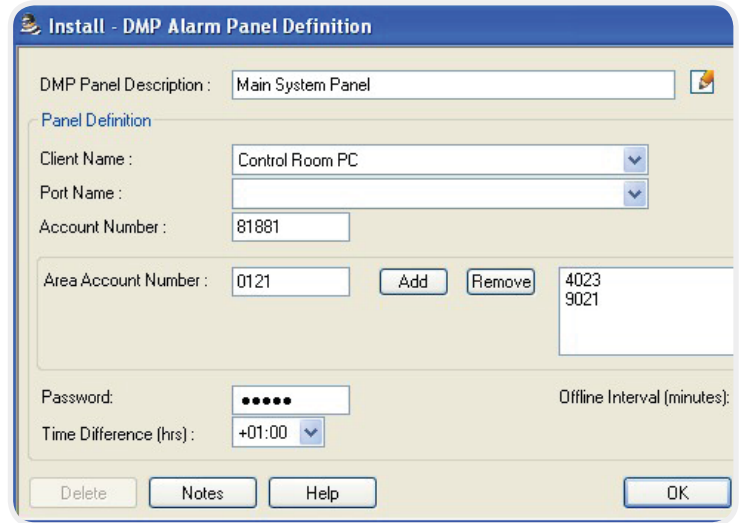
Smart Card Management

- Enables encoding and reading of smart cards
- Provides a variety of standard encoding formats with support for custom formats
- Allows encoding of biometric data



Building Control Module

- Provides automatic control of third-party building systems, such as lighting equipment or Heating, Ventilation and Air Conditioning (HVAC) units
- Leads to potential energy savings
- Allows control of third-party building systems from the Symmetry™ SMS user interface
- Uses the industry-standard BACnet™ communications protocol



Install - DMP Alarm Panel Definition

DMP Panel Description :

Panel Definition

Client Name :

Port Name :

Account Number :

Area Account Number :

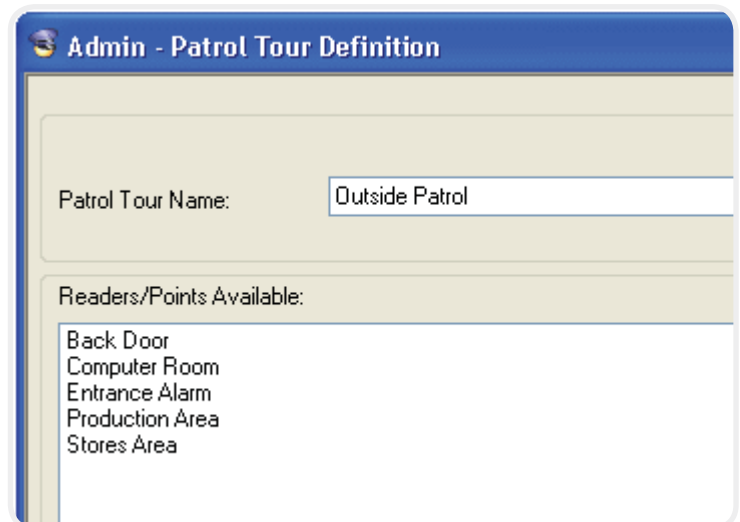
Password :

Time Difference (hrs) :

Offline Interval (minutes):

Guard Patrol Management

- Enables each guard's patrol tour to be monitored, recorded and reviewed
- Confirms that guards are patrolling correctly
- Determines the sequence of tour points and the time allowed for the guard to travel between them
- Indicates deviations from tour rules
- Standard access-control readers or monitor points can be used as tour points
- Interfaces to GCS® ProxiPen Data Collection Units



Admin - Patrol Tour Definition

Patrol Tour Name:

Readers/Points Available:

- Back Door
- Computer Room
- Entrance Alarm
- Production Area
- Stores Area

Web Access

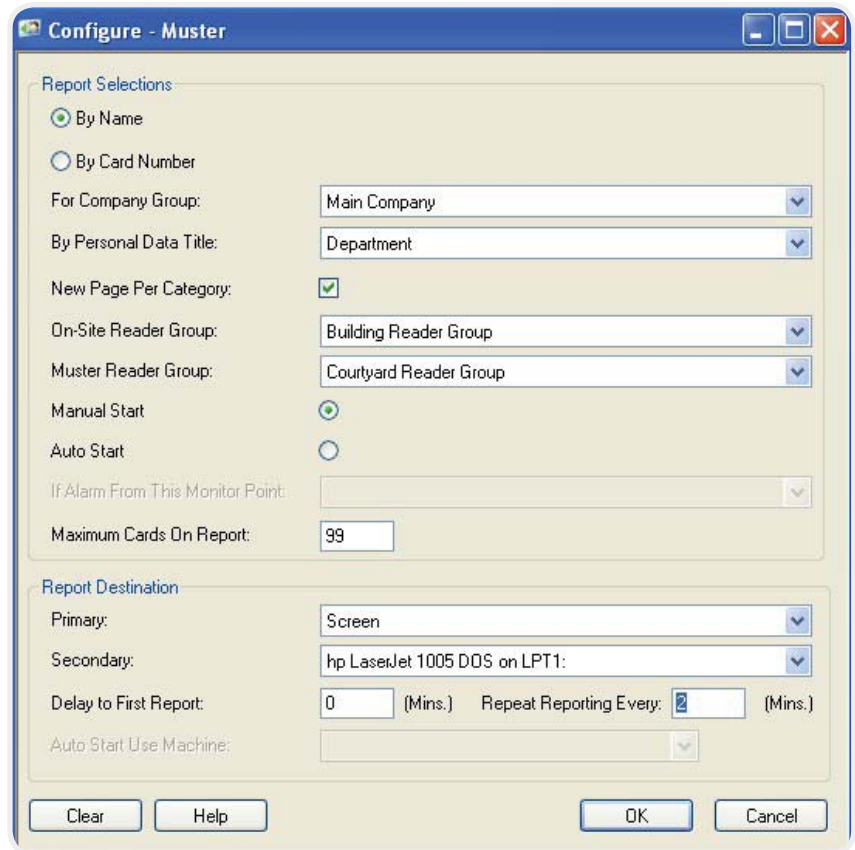
- Fully-integrated Web browser solution
- 128-bit Secure Socket Layer (SSL) encryption available
- Enables tasks such as card or report generation to be carried out remotely over the Internet or Intranet
- Web Clients require no client installation CD or software protection key
- Security maintained by user login
- Provides an easy yet secure method for a user to monitor, control and administer a system from almost any location in the world

Intercom Management

- Gives an easy-to-use graphical interface for managing and answering calls
- Dedicated Intercom Control screen displays all calls
- Operators can communicate with callers using simple screen buttons
- A Command button allows a barrier or door associated with the selected intercom to be opened

Muster Management (Safety Roll Call)

- Produces a report of people, including visitors, who may be in the building and where they are
- Invaluable during fire or other emergencies
- New reports are continually generated until no-one is left in the building
- Format of report can be customized
- Report can start automatically when a monitor point is triggered



Symmetry XML Open Integration Module

- Allows systems to exchange data with the Symmetry SMS using industry-standard XML and Web Services technologies
- Simplifies the task of linking diverse systems with the SMS
- Enables an external system to send commands to the SMS to control readers, etc.
- Allows card holder information to be imported and exported
- Alarms from other systems can be exported to the Symmetry SMS for centralized alarm management

Magnetic Stripe Encoding

- Enables encoding and reading of magnetic stripe cards
- Badges can be encoded while being printed, or encoded separately
- Provides a variety of standard encoding formats, with support for custom formats

Data Connect

- Enables card data to be imported/exported to third-party databases (e.g. human resources)
- Allows import/export to text or SQL database
- Encryption prevents unauthorized imports
- Selectable card data for export
- Automatically import or add access rights
- Provides alarm and event transactions from third party systems

Directory Sync Manager

- Integrates third-party systems with the Symmetry SMS software using LDAP Directories or Microsoft Active Directory



AMAG Technology Inc. is a subsidiary of Group 4 Technology Ltd. ©COPYRIGHT AMAG TECHNOLOGY INC. 2008

G4Tec is a Microsoft Gold Certified Partner for Security Solutions. Symmetry, ENVIS, and TLM are registered trademarks of Group 4 Technology Ltd. Microsoft is a registered trademark of Microsoft Corporation. All other brand names and product names are trademarks or registered trademarks of their respective owners.

Information contained in this literature is representative only and does not form part of a contract. Our policy is one of continuous product improvement and details may vary without notification. We are committed to providing defect-free products and services to our customers in partnership with equally committed suppliers and authorized dealers.

9700-1102
03/08