

# AlterPath™ Integrator

## for HP OpenView Network Node Manager

Cyclades AlterPath™ Integrator for HP OpenView is the first out-of-band infrastructure (OOBI) integration module that links the AlterPath System to the HP OpenView systems management platform. The AlterPath Integrator allows IT administrators to securely access, diagnose and restore disconnected IT assets using Cyclades OOBI products (serial console, KVM over IP, power control appliances, service processor managers and server blades) from within their HP OpenView window. The AlterPath Integrator eliminates the need for two separate management consoles by providing a single interface to manage IT devices either through the production network or the OOBI network. Using the integration module, administrators can right-click on disconnected IT asset icons, which appear in red instead of their normal color within the HP OpenView Network Node Manager (NNM). This action opens a direct out-of-band connection to the disconnected asset through the AlterPath System and allows the administrator to quickly diagnose and restore the asset. By streamlining this process of restoring IT assets, the AlterPath Integrator reduces the complexity of administering multiple management systems and enables businesses to reduce operational costs and risk, while increasing IT personnel and IT asset productivity.

### Synchronization

The AlterPath Integrator provides a mechanism to automatically import HP OpenView node maps through

file transfers (using the HTTP protocol and industry-accepted XML data file structure) initiated by the integration module at predefined intervals and when the program starts.

### External Interface

An external interface is designed to allow the integration module to launch a Web browser session to the AlterPath Manager. A URL is provided for each console and action that allows direct access (after proper authentication) to that particular console and action.

### Overview

System administrators today must access and monitor hundreds or thousands of servers often using separate management tools such as the HP OpenView NNM (Figure 1) and the AlterPath System (Figure 2) to troubleshoot and restore disconnected IT assets. The AlterPath Integrator combines the functionality of the AlterPath System with the HP OpenView NNM so that the administrator may access, diagnose and restore IT assets through the production network or the OOBI network from the same HP OpenView NNM management interface (Figure 3). The integration module allows the administrator to perform the following actions from the HP OpenView NNM interface:

- Access text-based consoles (serial consoles)
- Access graphical-based consoles (KVM over IP)
- Power cycle the IT node

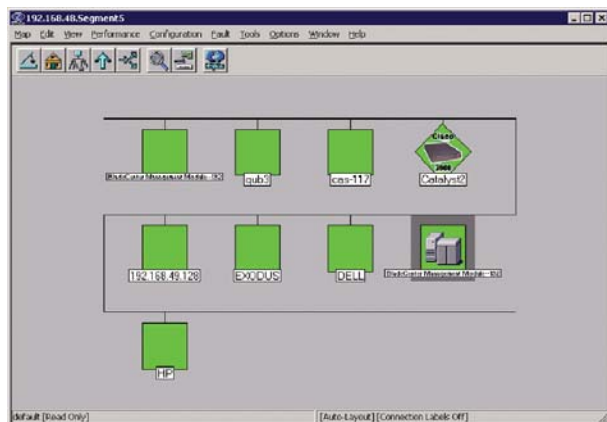
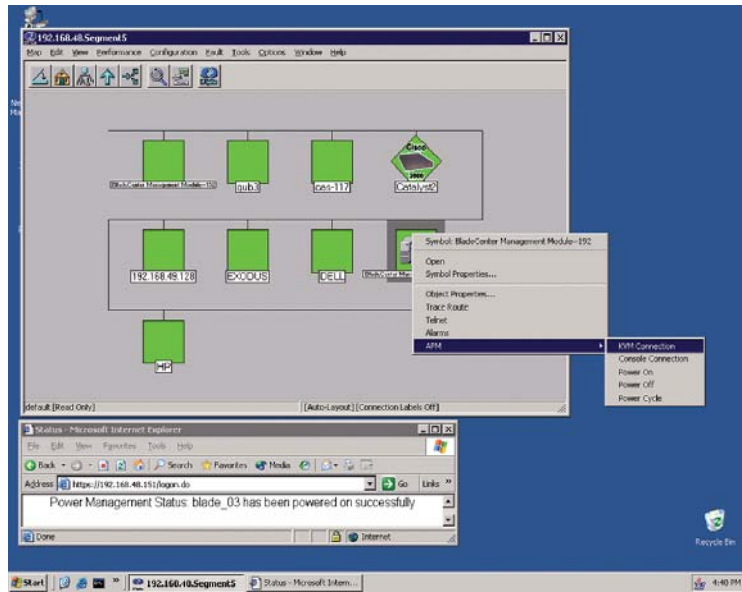


Figure 1. View of HP OpenView NNM management interface.



Figure 2. View of the AlterPath System management interface.

# AlterPath Integrator Specifications



**Figure 3.** Consolidated view of HP OpenView NNM management interface and the AlterPath Integrator. Screenshot shows the pull-down menu for remote access to a server with the following action choices: KVM Connection, Console Connection, Power On, etc. The lower-left dialog box shows the message received from the AlterPath System confirming the action taken.

## System Information

<b>Operation system:</b> Linux	Red Hat Linux ES 2.1 Operating System Release (2.4.9 - e.24) Pentium 4 or higher
<b>Software requirements:</b>	ire 1.4.2_04 AlterPath Manager 1.3 or higher
<b>Minimum memory/ hard-drive requirements:</b>	256 MB/10 MB
<b>Operation system:</b> Solaris	Solaris 9 SPARC Processor
<b>Software requirements:</b>	ire 1.4.2_04 libgcc-3.3-sol9-sparc-local.gz AlterPath Manager 1.3 or higher
<b>Minimum memory/ hard-drive requirements:</b>	256 MB/10 MB
<b>Operation system:</b> Windows	Windows 2003 Pentium II or higher - 333 MHz
<b>Software requirements:</b>	ire 1.4.2_04 APM 1.3 or higher
<b>Minimum memory/ hard-drive requirements:</b>	256 MB / 10 MB
<b>Interfaces:</b>	XML over HTTP and HTTPS
<b>User interfaces via pull-down menu on HP OpenView:</b>	Command line interface (SSH) KVM over IP Power on/off Virtual machine
<b>Capacity per AlterPath Integrator module</b>	Up to 25 AlterPath Managers

## Features

### Compatibility

- Windows
- Solaris
- Linux

### View Consolidation

- SSH command line interface for console access
- Simultaneous access to serial console, KVM and KVM over IP, server blades, and IPMI system interfaces with embedded power-cycling capability
- Console and user grouping for simple management of access control list (ACL) and user views
- Single sign on for centralized authentication, authorization and accounting

### Supported Systems

- Cyclades-1S console servers
- Cyclades AlterPath ACS console servers
- Cyclades AlterPath KVM/net
- IPMI-enabled servers (IPMI 1.5, 2.0)
- AlterPath BladeManager
- AlterPath Manager

## Benefits

- High availability with reduced MTTR
- View consolidation
- Support for multiple operating systems: Linux, Solaris, and Windows
- Change history logging
- Secure connections
- Supports up to 25 AlterPath Managers per AlterPath Integrator
- Customizable menu for each node
- Automated node updates

Part Number	Model
API0001	AlterPath Integrator for HP OpenView -Linux
API0002	AlterPath Integrator for HP OpenView -Solaris
API0003	AlterPath Integrator for HP OpenView -Windows