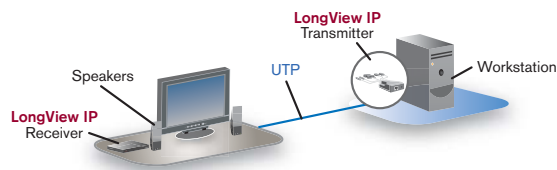




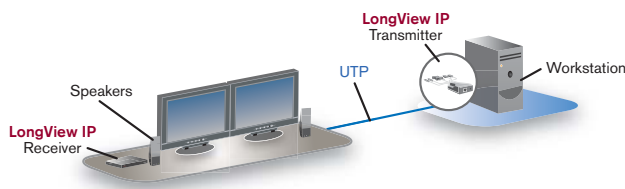
Convenient, remote access to your computers via the LAN

The LongView IP digital extension solution provides remote access to your computer over a local area network (LAN). With LongView IP digital extension, you have remote access to all of your computer's peripherals from anywhere on the corporate TCP/IP LAN or point-to-point over a single UTP cable. LongView IP digital extension lets you easily move your desktop devices, including your keyboard, video and mouse, speakers and microphone away from your computer. Convenient IP connectivity gives you access to high quality DVI video and audio from anywhere in your building. The LongView IP digital extender technology also improves data security, and environmental and limited workspace problems.

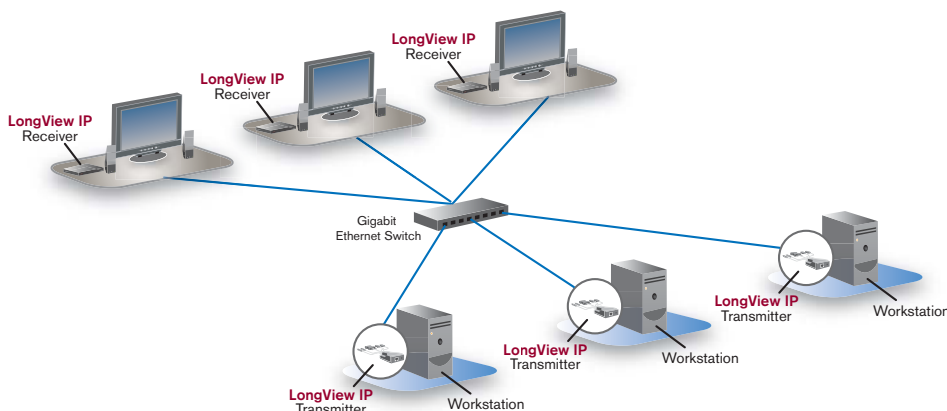
Deploying a LongView solution could not be easier. Simply connect the LongView transmitter to the computer, and the receiver at the user location (desk) and connect both units to a LAN.



Desktop extension over UTP



Dual monitor extension over UTP



Workstation extension over a LAN

Key Features and Benefits

- **Full Hardware Solution.** All connections to the user desktop peripherals are provided without the need for software, OS, disk or fan
- **DVI Video.** Connects to single or dual DVI monitors on the user desktop
- **CD Audio.** Connects to the analog speakers on the user desktop
- **Quad USB Ports.** Provides connection for up to four USB devices including keyboard, mouse, and mass storage devices
- **Dual PS/2.** Provides connection for legacy PS/2 keyboard and mouse
- **Ethernet Port.** Allows the computer and user to be located anywhere on the 100 or 1000Mbps network with full routing of data across routers, switches and subnets
- **Encryption of Network Data.** 128bit AES encryption of all data passing between the computer and the network
- **Upgradeable.** Based on an embedded Linux OS, the device is fully upgradeable to allow for future feature enhancements
- **Flexible Mounting.** Small form factor can be used on a desk, mounted directly to the back of a monitor or inside the display device.

LongView IP Specifications



Transmitter

Receiver

Connections

PS/2	No	2 (Keyboard & Mouse)
USB	2 x USB	4 x USB
VGA	1280x1024 @ 60Hz	1280x1024 @ 60Hz
DVI	1280x1024 @ 60Hz	1280x1024 @ 60Hz
3.5mm Stereo Speaker Jack	Yes, Stereo speakers 24 bit 44kHz	Yes, Stereo speakers 24 bit 44kHz
Mono microphone jack	Yes	Yes
Network Port	1 - RJ45	1 - RJ45
Network Speed	100Mbps or 1Gbps	100Mbps or 1Gbps
Encryption	SSL/AES 128 bit	SSL/AES 128 bit
USB Support	USB keyboard & mouse, and mass storage devices	USB keyboard & mouse, and mass storage devices

Mechanical

Format	self-enclosed module	Desktop mounting metal case with external power supply
Height	0.83 in. (21 mm)	1.04 in. (26.5 mm)
Depth	6.02 in. (153 mm)	5.12 in. (130 mm)
Width	2.68 in. (68 mm)	8.27 in. (210 mm)
Weight	.66 lbs. (0.3 Kg)	1.54 lbs. (0.7 Kg)

Environmental / Power

Operating Temperature	32° F to 95° F (0° C to 35° C)	32° F to 95° F (0° C to 35° C)
Storage Temperature	-4° F to 140° F (-20° C to 60° C)	-4° F to 140° F (-20° C to 60° C)
Humidity	10% to 90% (non-condensing)	10% to 90% (non-condensing)
Power In	5VDC / 1.1A	100-250VAC / 50-60 Hz, 1A
Power Consumption	6W	20W

Standards

Approved Agency	cUL, UL, CE, FCC15 Class A
-----------------	----------------------------

LongView IP DH Specifications



Transmitter

Receiver

Connections

PS/2	No	2 (Keyboard & Mouse)
USB	1 x USB	4 x USB
VGA	No	2 x 1600x1200 @ 60Hz (with Adaptor)
DVI	2 x DVI-D (supports digital video only)	2 x DVI-I (supports digital and/or analog video) 1900 x 1200 @ 60Hz
3.5mm Stereo Speaker Jack	Yes, Stereo speakers 24 bit 44kHz	Yes, Stereo speakers 24 bit 44kHz
Mono microphone jack	No	No
Network Port	1 - RJ45	1 - RJ45
Network Speed	100Mbps or 1Gbps	100Mbps or 1Gbps
Encryption	SSL/AES 128 bit	SSL/AES 128 bit
USB Support	USB keyboard & mouse, and mass storage devices	USB keyboard & mouse, and mass storage devices

Mechanical

Format	External metal case module	Desktop mounting metal case with external power supply
Height	1.10 in (28 mm)	1.10 in (28 mm)
Depth	7.87 in (200 mm)	6.06 in (154 mm)
Width	5 in (127 mm)	8.19 in (208 mm)
Weight	1.65 lbs (.75 Kg)	2.09 lbs (.95Kg)

Environmental / Power

Operating Temperature	32° F to 95° F (0° C to 35° C)	32° F to 95° F (0° C to 35° C)
Storage Temperature	-4° F to 140° F (-20° C to 60° C)	-4° F to 140° F (-20° C to 60° C)
Humidity	10% to 90% (non-condensing)	10% to 90% (non-condensing)
Power In	5VDC	100 – 250VAC@1.2A
Power Consumption	6W	1W

Standards

Approved Agency	cUL, UL, CE, FCC15 Class A
-----------------	----------------------------

LongView IP VG Specifications



Transmitter

Receiver

Connections

PS/2		2 (Keyboard & Mouse)
USB	2 x USB	2 x USB
VGA	1280x1024 @ 60Hz	1280x1024 @ 60Hz
DVI	No	No
3.5mm Stereo Speaker Jack	Yes, Stereo speakers 24 bit 44kHz	Yes, Stereo speakers 24 bit 44kHz
Mono microphone jack	Yes	Yes
Network Port	1 - RJ45	1 - RJ45
Network Speed	100Mbps or 1Gbps	100Mbps or 1Gbps
Encryption	SSL/AES 128 bit	SSL/AES 128 bit
USB Support	USB keyboard & mouse	PS/2 / USB keyboard & mouse

Mechanical

Format	Self-enclosed module	Desktop mounting metal case with external power supply
Height	0.83 in. (21 mm)	1.04 in. (26.5 mm)
Depth	6.02 in. (153 mm)	5.12 in. (130 mm)
Width	2.68 in. (68 mm)	8.27 in. (210 mm)
Weight	.66 lbs. (0.3 Kg)	1.54 lbs. (0.7 Kg)

Environmental / Power

Operating Temperature	32° F to 95° F (0° C to 35° C)	32° F to 95° F (0° C to 35° C)
Storage Temperature	-4° F to 140° F (-20° C to 60° C)	-4° F to 140° F (-20° C to 60° C)
Humidity	10% to 90% (non-condensing)	10% to 90% (non-condensing)
Power In	5VDC / 1.1A	100-250VAC / 50-60 Hz
Power Consumption	6W	20W

Standards

Approved Agency	cUL, UL, CE, FCC15 Class A	cUL, UL, CE, FCC15 Class A
-----------------	----------------------------	----------------------------