

LANDesk® Server Manager



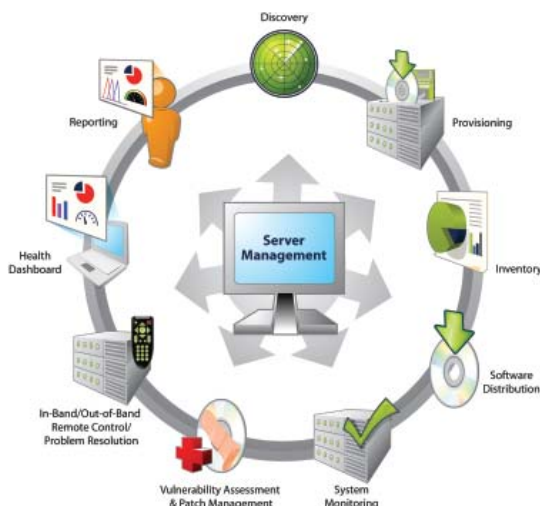
Complete, Secure Solution for Server Management

LANDesk® Server Manager by Avocent allows server administrators and data center managers to standardize the way that servers are deployed and maintained in their data centers, remote branch offices, and disaster recovery sites leading to higher levels of availability.

LANDesk Server Manager contains a suite of powerful tools that allows IT administrators to plan, deploy and manage servers through their entire life cycle by providing features such as discovery and inventory, bare metal provisioning, configuration management, patch management, monitoring and alerting, problem identification and resolution and complete change audit logs.

With LANDesk Server Managers' template driven provisioning process, an administrator can define and design a high level server build template once, then use that template many times over creating repeatable and consistent server builds. Server build templates can be comprised of modular “building-block” templates that make it easy to change hardware platforms and server configurations thereby ensuring that a heterogeneous server environment can be managed in a more homogeneous way. This level of standardization and control brings order to an otherwise chaotic and ever-changing environment which leads to increased operating efficiency and server availability.

When used in combination with Avocent DSView® 3 management software, the scope of server operations is extended to include a complete out-of-band management solution. This approach complements the systems management functionality of LANDesk Server Manager by allowing for “Always On” remote access to server hardware that is a requirement of lights out data centers and delivers true remote management.

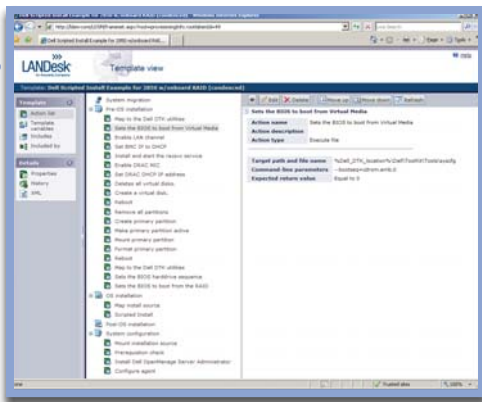


Applications

- Reusable, repeatable system configuration for server provisioning
- Reliable, timely, automated patch management
- Remote problem resolution to restore server health
- Extensive monitoring of server hardware, software, performance and security

Benefits

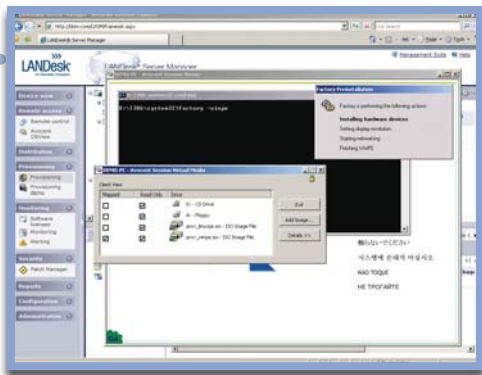
- Intelligently control levels of automation required for bare metal provisioning, patches, images and updates
- Vendor-neutral single console support for hardware and operating systems
- User-defined automation for patch management provides greater levels of availability and data integrity
- Reduces operating budgets by eliminating the need for dispatching IT professionals on site
- Enhances security by enabling a lights out data center environment
- Proactive monitoring and management of servers and services
- Fast diagnosis and correction of incidents
- Robust resource management



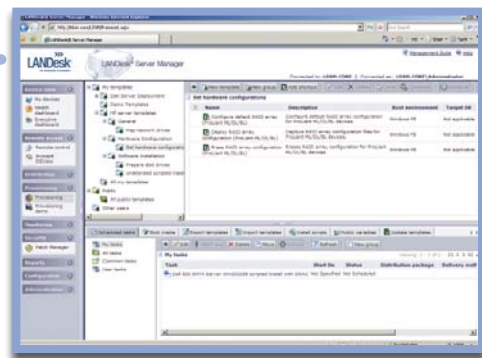
Server Provisioning and Configuration

A complete provisioning solution allows for all aspects of server configuration to be defined using modular and reusable templates that leads to standardized configuration of servers from multiple vendors and removes the need to manage multiple static system images. Templates are defined to configure system hardware, operating system installation (image based or scripted install), Post OS configuration of drivers, and system configuration such as application installation and patching. The end result is a fully deployed, secure and compliant server that can be replicated many times in the environment.

LANDesk Server Manager is also integrated with Avocent DSView 3 software, which provides complete out-of-band management to allow for pre boot operations such as resetting of BIOS boot order and also provides “virtual media” capabilities to allow for remote provisioning of servers from bare metal without the need for DHCP and PXE environments.



This integrated technology provides a unique solution for remote provisioning where security and regulatory compliance is an issue or for remote environments where DHCP and PXE environments may not be available.



Server provisioning is not limited to bare metal deployment of servers and the reusable templates can be used to store and execute standard management scripts and provides a complete provisioning history showing all of the configuration actions that have been performed on the server throughout its history.

Software Updates

LANDesk Server Manager software updates ensure that systems are maintained in a secure and reliable state and provide a controlled and automated methodology to deploy and verify patches.

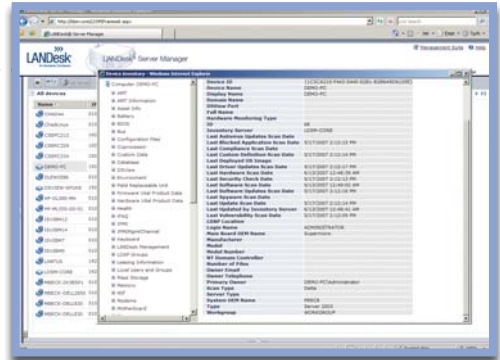
LANDesk Server Manager scans the server for security vulnerabilities utilizing LANDesk repository of known security vulnerability definitions that are synchronized with major operating system and server hardware vendors. Vulnerabilities are reported through the console and the administrator can then investigate, test and deploy the necessary updates in a secure, timely and controlled fashion. A full history of patch deployment and executive dashboard provides complete visibility to the health and security of your servers.



Discovery and Inventory

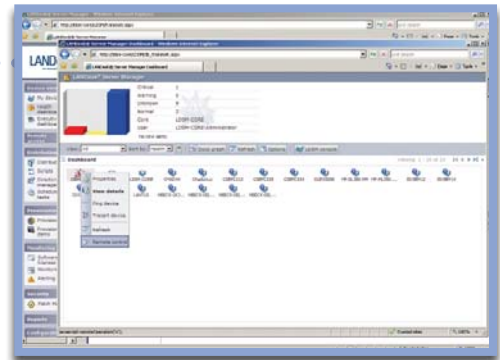
Having complete knowledge of your server environment is critical to many aspects of systems management and has impact on security, compliance and quality.

LANDesk Server Manager asset and inventory database and query tools provide a complete view of your server and software assets in the data center and becomes the primary source of server information that enables effective strategic planning and tactical operations to take place in the data center.

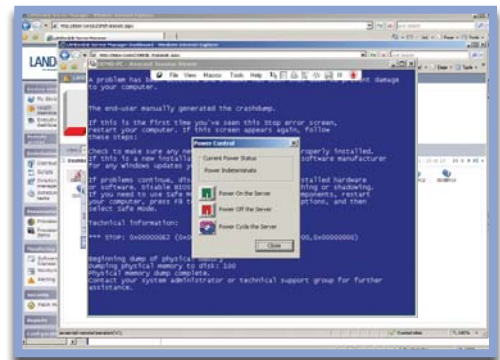


Health Monitoring and Problem Resolution

The monitoring dashboard provides a customized view of your server environment as well as the health of the servers. It has all of the tools necessary to diagnose and remediate problems. From the Active System Console technology that provides a snapshot view of the major server subsystems, a problem can be diagnosed before launching the necessary tools to remediate the problem, which can include patch management, software updates, remote control or complete restoration of a server to a previously defined template..



Unique to Avocent, the LANDesk Server Manager is integrated with Avocent DSVIEW 3 software that allows for complete out-of-band management through KVM, serial console, service processors and power control to provide complete access and control even when a server has crashed or is in a pre-boot state.



Features

Discovery and Inventory

Scans local and remote networks to discover unmanaged servers in the environment and then collects complete hardware and software inventory of all managed servers.

Server Provisioning

Provides a complete provisioning solution for servers using a framework of modular and reusable templates. Configures hardware, installs operating system (scripted install or image based), configures drivers and applications, and patches to create a fully operational server.

Patch Management

Scans for vulnerabilities in all managed servers using LANDesk patch management service and allows for testing, deployment and verification of patches in production.

Problem Resolution

The health dashboard console provides system health and status summary with the tools required for incident resolution including in-band and out-of-band remote control and network based diagnostic tools.

Security and Performance Monitoring

Security, performance monitoring and alerting provides features such as predictive failure analysis, threshold based alarms and security/compliance features such as removable media detection.

DSView 3 Integration

Integration with Avocent DSView 3 software provides a unique solution for server management by combining systems management features of LANDesk Server Manager with complete out-of-band management and virtual media functionality from DSView 3 software ensuring an "Always On" server management solution.

System Requirements

LANDesk Server Manager minimum requirements

The core server should be dedicated to hosting LANDesk Server Manager, and must not function as a domain controller or Active Directory controller.

- Supported Windows® server OS using NTFS
- Microsoft® Data Access Components (MDAC) 2.8
- Microsoft .NET Framework version 1.1. or newer, or ASP .NET 1.1 or newer
- Microsoft Internet Explorer® 6.x SP1
- Access to supported database
- Access to supported Web server
- Static IP address
- Internet access (for activation and access to LANDesk patch database)

Supported core server operating systems

- Microsoft Windows 2000 Server SP4
- Microsoft Windows 2000 Advanced Server SP4
- Microsoft Windows 2003 SP1, Standard or Enterprise Edition
- Microsoft Windows Server 2003 R2, Standard or Enterprise Edition

Supported databases

- Microsoft MSDE 2000 SP4
- Microsoft SQL Server 2000 SP4
- Microsoft SQL Server 2005
- Oracle® 91 (9.2.0.4)
- Oracle 10g

Supported Web Servers

Microsoft Internet Information Server 5.0
Microsoft Internet Information Server 6.0

Supported Systems

Platform support

LANDesk Server Manager 8.8
Microsoft Windows 2000 Server SP4
Microsoft Windows 2000 Advanced Server SP4
Microsoft Windows 2000 SP4 Small Business Server
Microsoft Windows Server 2003 SP1/R2 Standard Edition
Microsoft Windows Server 2003 SP1 Standard Edition x64
Microsoft Windows Server 2003 SP1/R2 Enterprise Edition
Microsoft Windows Server 2003 SP1 Small Business Server
Red Hat® Enterprise Linux 3 U 6 (ES/AS)
Red Hat Enterprise Linux 3 EM64T
Red Hat Enterprise Linux 4 U 4 (ES/AS)
Red Hat Enterprise Linux 4 EM64T
Red Hat Enterprise Linux 5
SUSE® Linux Enterprise 9.1 – 9.3 (WS)
SUSE Linux Enterprise 9 SP2
SUSE Linux Enterprise 9 EM64T
SUSE Linux Enterprise 10
SUSE Linux Enterprise 10 EM64T
SUSE Linux Enterprise 10 (WS)
IBM AIX 5.1/5.2
Hewlett Packard HP-UX 11/11i
VMWare® ESX Server 3.x

Part Number	Model	Description
LDSM-100NODE	LANDesk Server Manager	100 Node License
LDSM-1NODE	LANDesk Server Manager	1 Node License
LDSM-1YRP	LANDesk Server Manager	1 Year Patch
LDSM-MEDIA	LANDesk Server Manager	Media Set
DSV3-LDSM	LANDesk Server Manager	DSView 3 Integration