



# ELS-16 II Terminal Server

## Print Server and Multi-session Support: Offers LAT and TCP/IP protocols

### FEATURES AND BENEFITS

- **Serial Signaling**

RS-232 serial signaling.

- **Print Server Support**

Fully supports TCP/IP and DEC LAT (optional) protocols and Novell IPX for print server.

- **Parallel Port**

Convenient built-in parallel port.

- **Flash Upgrades**

Flash based for easy upgrade.

- **SNMP MIB II**

SNMP MIB II support for easy management.

- **NetWare Printing**

Supports NetWare print services.

- **TCP/IP Support**

Full TCP/IP implementation including Telnet, Reverse Telnet, Rlogin, Raw TCP and Reverse Raw TCP connections; SRP, RSRP, DNS, UDP and PING.

Ability to disable Rlogin for enhanced security.

- **LAT Support (optional)**

Full DEC server compatibility; Reverse LAT; NCP, MOP, DSVCONFIG and TSM compatible; VT-420 split screen; VMS-style command line editing.

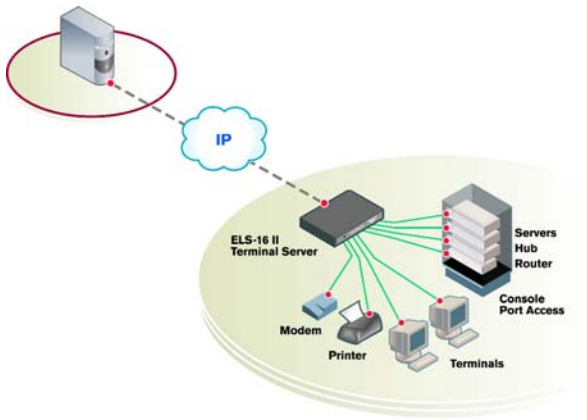
Connect serial devices and printers to Ethernet networks with the ELS terminal server for multi-session support and print server applications.

The ELS-16 II terminal server provides serial connectivity to your Ethernet network. With support for both DEC (optional) and UNIX operating systems, the ELS-16 II terminal server offers concurrent LAT and TCP/IP protocols, multi-session support, and performance to satisfy the most demanding applications. Configuration data can be saved to quickly and easily configure multiple servers or restore a server to its original parameters. Information such as Services Available and IP Address can be easily obtained by clicking on the node icon.

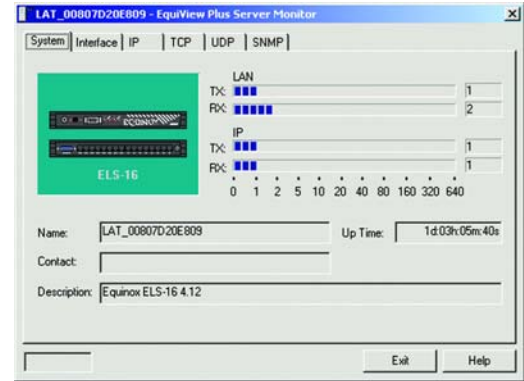
The ELS-16 II terminal server includes EquiView, the management software that simplifies configuration and management of terminal servers. The Avocent terminal server fully support TCP/IP and DEC LAT protocols and Novell IPX for print server applications.



The ELS-16 II terminal server provides serial connectivity to your network. With support for most UNIX operating systems, the ELS terminal server offers concurrent LAT (optional) and TCP/IP protocol support.



The ELS-16 II terminal server supports RS-232 connectivity of serial devices such as terminals, printers, modems and servers.



Monitor on a port by port basis serial devices connected to ELS terminal servers with EquiView Plus.

TECHNICAL SPECIFICATIONS	ELS-16 II (110V/220V)	LAT License (4-user)	ELS Mount Bracket (Mounts two units)	Rack Mount Kit (For wall)
<b>PART #</b>	990421	650127	790121	790091
<b>MSRP</b>	\$ 1,495	\$ 60	\$ 25	\$ 25
<b>POWER</b>				
5V (mA)	800	N/A	N/A	N/A
12V (mA)	300			
-12V (mA)	-140			
<b>DIMENSIONS</b>				
	1.50" H X 13.5" W X 13.3" D	N/A	N/A	N/A
<b>SHIPPING WEIGHT</b>	13.00 lbs.	N/A	N/A	N/A
<b>MODEM CONTROL</b>	Full			
<b>CONNECTORS</b>	(16) serial RJ-45, 8-wire DTE	N/A	N/A	N/A
<b>SURGE SUPPORT</b>	15KV	N/A	N/A	N/A
<b>OS SUPPORT</b>				
	N/A	N/A	N/A	N/A

**CONFORMANCE**

FCC P. 15 Class A, CE

External Power Supply:  
UL1950, CSA 22.2, EN 60950

**ENVIRONMENTAL**

Operating temperature: 0° - 40° C  
Humidity: 10% to 90%  
(Non-condensing)

**WARRANTY**

The Avocent terminal server has a three-year warranty.

**PRODUCT EVALUATIONS**

Try any Avocent product for 30-days. Sign-up online or by phone.

**WWW.AVOCENT.COM**

Visit [www.avocent.com](http://www.avocent.com) for additional product information, drivers, manuals, events, technical assistance and more.



One Dambrackas Way, Sunrise, FL 33351  
 TEL 800.275.3500 - 954.746.9000, Ext. 7110  
 FAX 954.746.9101 - [connectivity.sales@avocent.com](mailto:connectivity.sales@avocent.com)  
[www.avocent.com](http://www.avocent.com)

Avocent, and the Avocent logo are trademarks or registered trademarks of Avocent Corporation or its affiliates. All other marks are the property of their respective owners. © 2007 Avocent Corporation.