



ADA Shower

A6036.05F
60" (1524 mm) One-Piece,
Open Top, Barrier-Free Shower



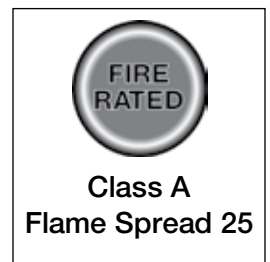
Features

- Solid, High-Gloss, Cast Acrylic Construction Reinforced with a Composite Matrix that has a Backside Fire Rating of "A" and a Flame Spread of 25
- Rugged Durable Construction Protects Against Installation Damage and Chipping
- Seamless, One-Piece Design Eliminates Leaking
- Factory Installed Components are Provided with Additional Back Reinforcements to Provide Code Complying Structural Integrity
- Fits Any Standard Five-Foot Recessed Area
- Available in White, Biscuit and Bone (Other Colors Available Upon Request)
- Acrylic Shell: Limited Five Year Warranty
Grab Bar and all Other Fittings and Fixtures: Limited One Year Warranty

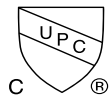


A6036.05F shown in White

Model #	Description
A6036.05F	60" x 36" (1524 mm x 914 mm) One-piece, high gloss, cast acrylic, open top, barrier-free shower module with two (2) molded corner soap shelves and one (1) large cosmetic shelf. Factory installed components include two (2) stainless steel, horizontal grab bars, one (1) white, phenolic, fold-up wheelchair transfer bench and one (1) stainless steel curtain rod. ADA compliant.
A6036.05G	Same as A6036.05F, less white, phenolic, fold-up bench. Not ADA compliant.
A6036.05D	Same as A6036.05F, less white, phenolic, fold-up bench and stainless steel, horizontal grab bars. Not ADA compliant.

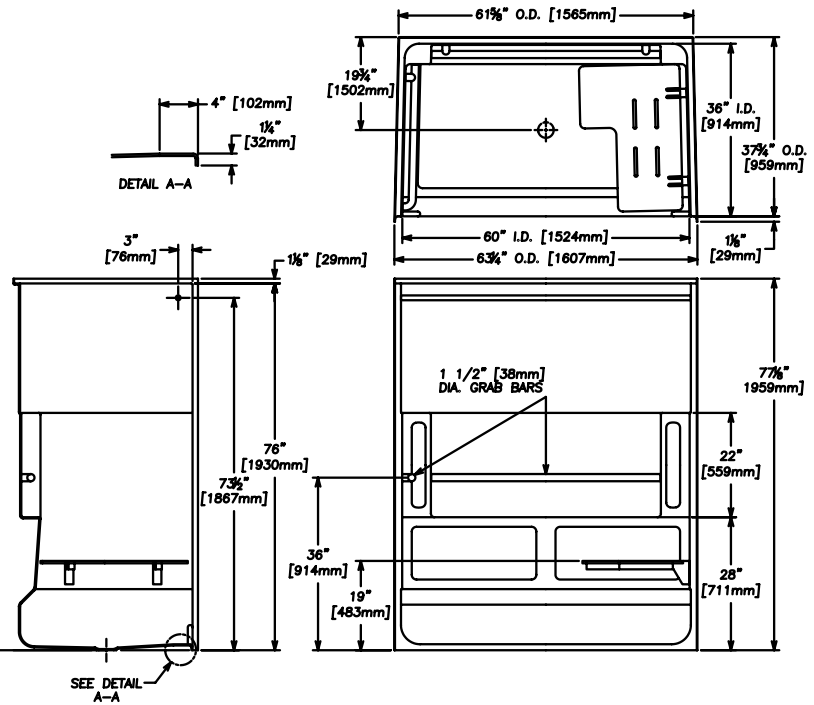


Model A6036.05F Only



Specifications

- Dimensions:** 60" x 36" [1524 mm x 914 mm]
Shipping Cubes: 110 ft³ (2.7 m³)
Shipping Weight: 255 lbs [116 kg]
Warranty: Acrylic Shell: Limited Five Year
 Grab Bars and all Other Fittings and Fixtures: Limited One Year



IMPORTANT: These dimensions are nominal and may vary within the range of tolerances established by ASME Standard A-117.1 and Z-124.2. The shower also complies with the guidelines issued by ADA, US Architectural and Transportation Barriers Compliance Board (A & T.B.C.B.) and with most city, state and national standards for barrier-free accessible shower facilities for the handicapped. Anti-skid floor treatment meets performance requirements of ASTM F462-78.

Features and Upgrades



Pressure Balanced, Single Lever Mixing Valve with Check Stops (180AA)



Thermostatically Controlled, Single Lever Mixing Valve with Check Stops (T162AA)



Hand Held Shower with Swivel Fitting, 69" Flexible Stainless Steel Hose and an In-line Vacuum Breaker (H11)



24" Slide Guide (For Hand Held Shower Attachment) (H12)



Fold down seat and padded head rest (PS)



Two-inch (2") Plastic Drain with Chrome Plated Strainer (PD2)



Two-inch (2") Cast Brass Drain with Chrome Plated Strainer (H30)



White Shower Curtain with Hooks (C7)

Lucite® Acrylic Sheet with Microban® Antibacterial Protection (MBP)

Lucite® is a registered trademark of INBOS Acrylics, Inc. Microban® is a registered trademark of Microban® Products Company, Huntersville, NC

Customer Service United States
 41 Cairns Road
 Mansfield, OH 44903
 Email: customerservice@craneplumbing.com

Customer Service Canada
 15 Crane Ave.
 Stratford, ON N5A 6T3
 Email: sales@craneplumbing.ca

www.craneplumbing.com

www.craneplumbing.ca