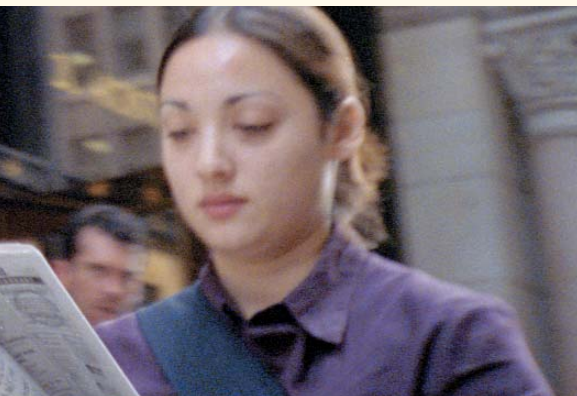




SwitchView Desktop Switches at a Glance

| | Users | Computers | Platforms | Resolution | Key Features |
|--|--------|-----------|------------|-------------|---|
| SwitchView PC | Single | 2 | PC | 2048 x 1536 | Multiple PS/2 Computers |
| SwitchView PC | Single | 4 | PC | 2048 x 1536 | Multiple PS/2 Computers |
| SwitchView Multimedia (USB 1.1) | Single | 2 | PC and USB | 2048 x 1536 | Multiple PS/2 or USB Computers Audio support speakers and microphone |
| SwitchView Multimedia (USB 1.1) | Single | 4 | PC and USB | 2048 x 1536 | Digital Cameras, PDAs, Scanners, Printers, CD-ROMS |
| SwitchView Multimedia (USB 2.0) | Single | 2 | PC and USB | 2048 x 1536 | Digital Cameras, PDAs, Scanners, Printers, CD-ROMS |
| SwitchView Multimedia (USB 2.0) | Single | 2 | PC and USB | 2048 x 1536 | Digital Cameras, PDAs, Scanners, Printers, CD-ROMS |
| SwitchView DVI (USB 2.0) | Single | 2 | USB | 1920 x 1200 | DVI Monitors, Flat Panel Displays |
| SwitchView DVI (USB 2.0) | Single | 4 | USB | 1920 x 1200 | DVI Monitors, Flat Panel Displays |



**SwitchView
Multimedia
switch**

SwitchView

Product Series



SwitchView PC switch

The Avocent **SwitchView PC** KVM desktop switches let you control up to four PS/2 computers from one keyboard, monitor and mouse. Lighted LED indicates which computer you are accessing and audible indicators confirm channel switching. With color-coded cables for easy installation, customizable channel selections and error-free boot-up, the SwitchView PC switch offers you a complete desktop KVM solution.

SwitchView PC Highlights

- Switch through push-button or through keyboard hotkey sequence
- Auto scan among connected computers to monitor each computer's operating status
- Color-coded cables and connectors make installation quick and easy
- Error-free boot-up with keyboard and mouse emulation
- Available in 2 and 4-port models
- Supports up to four PS/2 computers
- Backed by Avocent 2 year warranty and technical support

SwitchView Desktop KVM Switches

Save space, time and money.

SwitchView KVM desktop switches let you control up to four computers from one keyboard, monitor and mouse.





SwitchView DVI switch

The **SwitchView DVI (Digital Visual Interface)** KVM switches feature 1920 x 1200 video resolution and deliver crisp images for your high-end displays and flat panel monitors. The versatile SwitchView DVI KVM switch is available in 2 and 4-port models. It easily manages up to four USB DVI computers from a single USB keyboard, mouse and DVI monitor.

SwitchView DVI Highlights

- Supports high-end applications using DVI monitor or flat panel and USB PCs, Mac G3/G4, iMac
- 1920 x 1200 video resolution is ideal for desktop graphical applications
- Use push-button or multiple keyboard hotkeys for customized channel selections
- Configurable scanning among computers to monitor each computer's operating status
- Includes two USB 2.0 hub ports
- Provides independent switching of KVM and USB hub ports
- Audio support for speakers and microphones
- Backed by Avocent 2 year warranty and technical support



SwitchView Multimedia switch

The all-in-one **SwitchView MM (Multimedia)** desktop KVM switches let you switch between USB or PS/2 systems, share your USB devices and control multimedia applications. With one SwitchView Multimedia switch, you can control multiple PCs and share access to your USB devices: digital camera, CD-ROM, PDA, scanner or printer. The SwitchView Multimedia KVM switches are available in 2 and 4 port models, with USB 1.1 and USB 2.0 support.

Note: The SwitchView Multimedia 2 port model with USB 1.1 support does not include the hub feature.

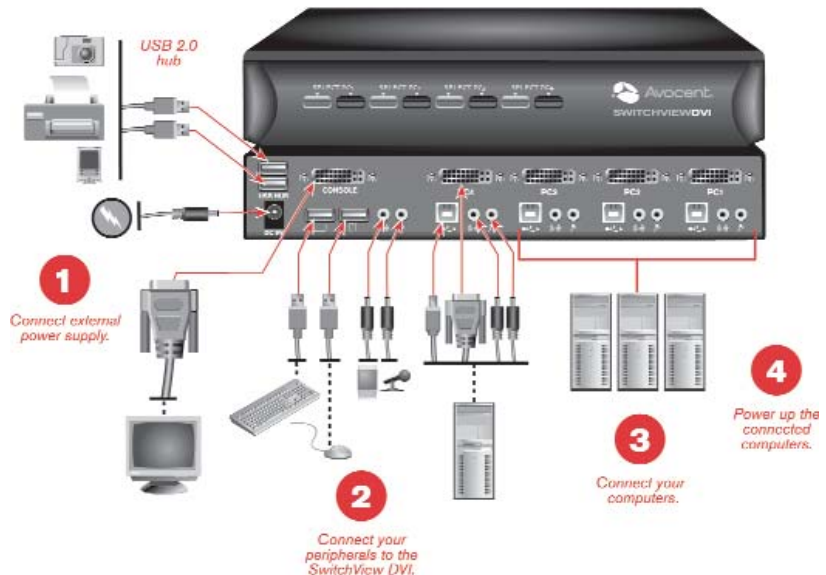
SwitchView MM1 Highlights

- Provides high 2048 x 1536 video resolution
- Push-button or hotkey switching for channel selections
- Configurable scanning among computers to monitor each computer's operating status
- Audio support for speakers and microphones
- USB or PS/2 system support
- Available in 2 and 4-port models with USB 1.1 support
- Backed by Avocent 2 year warranty and technical support

SwitchView MM2 Highlights

- Includes a USB 2.0 built-in hub
- Provides high 2048 x 1536 video resolution
- Push-button or configurable hotkey switching for channel selections
- Configurable scanning among computers to monitor each computer's operating status
- Audio support for speakers and microphones
- USB or PS/2 system support
- Independent switching of KVM and USB hub ports
- USB multimedia keyboard support
- Available in 2 and 4-port models
- Backed by Avocent 2 year warranty and technical support

SwitchView KVM switches include a space-saving design to fit your multi-tasking desktop. Color-coded cables and connectors make your installation fast and easy!



SwitchView PC

SwitchView DVI

SwitchView MM1

SwitchView MM2

Ordering Information

| SWITCH | |
|-----------------------|--|
| SwitchView PC | |
| 2SVP10-001 | 2-port PS/2 system/console |
| 4SVP10-001 | 4-port PS/2 system/console |
| SwitchView MM1 | |
| 2SVPUA10-001 | 2-port PS/2 USB system/console USB 1.1 hub, audio |
| 4SVPUA10-001 | 4-port PS/2 USB system/console USB 1.1 hub, audio |
| SwitchView MM2 | |
| 2SVPUA20-001 | 2-port PS/2 USB system/console USB 2.0 hub, audio |
| 4SVPUA20-001 | 4-port PS/2 USB system/console USB 2.0 hub, audio |
| SwitchView DVI | |
| 2SVDVI10-001 | 2-port USB system/console USB 2.0 hub, audio |
| 4SVDVI10-001 | 4-port USB system/console USB 2.0 hub, audio |

| CABLES | |
|---------------------------|---------------------------------|
| SwitchView PC | |
| SVP-6 | 6 feet PS/2 cable kit |
| SVP-9 | 9 feet PS/2 cable kit |
| SwitchView MM1/MM2 | |
| SVUSB-6 | 6 feet PS/2 USB audio cable kit |
| SVUSB-9 | 9 feet PS/2 USB audio cable kit |
| SwitchView DVI | |
| SVDVI-6 | 6 feet DVI USB audio cable kit |
| SVDVI-9 | 9 feet DVI USB audio cable kit |

| ACCESSORIES | |
|----------------------|---|
| SwitchView PC | |
| SVEPS-001 | 9V DC @1A external transformer optional for SwitchView PC switch |

Switch Specifications

| SwitchView PC | | | | |
|----------------------------------|--|-------------------|------------------|----------------|
| MECHANICAL | Height | Width | Depth | Weight |
| 2SVP10 | 1.7 in (4.3 cm) | 5.0 in (12.7 cm) | 3.0 in (7.62 cm) | 1 lb (.45 kg) |
| 4SVP10 | 1.7 in (4.3 cm) | 8.0 in (20.32 cm) | 3.0 in (7.62 cm) | 2 lbs (.90 kg) |
| ENVIRONMENTAL / POWER / HARDWARE | | | | |
| Power Frequency | 9V DC @1A external transformer | | | |
| Supported Hardware - Computer | PS/2 | | | |
| Supported Hardware - Monitor | (VGA, SVGA, XGA, QVGA, SXGA, UXGA, QXGA) Maximum resolution 2048 X 1536 | | | |
| Supported Hardware - Peripherals | PS/2 keyboard, PS/2 mouse, Intellimouse (PS/2 only), IBM Scroll Point, Logitech 2 Button, Logitech Trackball Scroller, Microsoft Trackball Scroller, Microsoft Scroller, Microsoft Intelleye Five Button | | | |
| STANDARDS | | | | |
| Approved Agency | En55022 Class B, EN55024,61000-3-2,6100-3-3, FCC 15 Class B, CE | | | |

| SwitchView DVI | | | | |
|----------------------------------|---|-------------------|-------------------|-----------------|
| MECHANICAL | Height | Width | Depth | Weight |
| 2SVDVI10 | 1.7 in (4.3 cm) | 6.5 in (16.51 cm) | 4.0 in (10.16 cm) | 2 lbs (.90 kg) |
| 4SVDVI10 | 1.7 in (4.3 cm) | 10 in (25.4 cm) | 4.6 in (11.68 cm) | 3 lbs (1.36 kg) |
| ENVIRONMENTAL / POWER / HARDWARE | | | | |
| Power Frequency | 9V DC @1A external transformer | | | |
| Supported Hardware - Computer | USB (2.0) | | | |
| Supported Hardware - Monitor | DVI - Maximum resolution 1920 X 1200 | | | |
| Supported Hardware - Peripherals | USB (2.0) keyboard and mouse | | | |
| STANDARDS | | | | |
| Approved Agency | En55022 Class B, EN55024,61000-3-2,6100-3-3, FCC 15 Class B, CE | | | |

| SwitchView MM1 | | | | |
|----------------------------------|--|-------------------|-------------------|----------------|
| MECHANICAL | Height | Width | Depth | Weight |
| 2SVPUA10 | 1.7 in (4.3 cm) | 5.5 in (13.97 cm) | 3.5 in (8.89 cm) | 1 lb (.45 kg) |
| 4SVPUA10 | 1.7 in (4.3 cm) | 8.7 in (22.09 cm) | 4.0 in (10.16 cm) | 2 lbs (.90 kg) |
| ENVIRONMENTAL / POWER / HARDWARE | | | | |
| Power Frequency | 9V DC @1A external transformer | | | |
| Supported Hardware - Computer | PS/2 | | | |
| Supported Hardware - Monitor | (VGA, SVGA, XGA, QVGA, SXGA, UXGA, QXGA) Maximum resolution 2048 X 1200 | | | |
| Supported Hardware - Peripherals | PS/2 keyboard, PS/2 mouse, Intellimouse (PS/2 only), IBM Scroll Point, Logitech 2 Button, Logitech Trackball Scroller, Microsoft Trackball Scroller, Microsoft Scroller, Microsoft Intelleye Five Button | | | |
| STANDARDS | | | | |
| Approved Agency | En55022 Class B, EN55024,61000-3-2,6100-3-3, FCC 15 Class B, CE | | | |

| SwitchView MM2 | | | | |
|----------------------------------|--|-------------------|-------------------|----------------|
| MECHANICAL | Height | Width | Depth | Weight |
| 2SVPUA20 | 1.7 in (4.3 cm) | 5.5 in (13.97 cm) | 3.5 in (8.89 cm) | 1 lb (.45 kg) |
| 4SVPUA20 | 1.7 in (4.3 cm) | 8.7 in (22.09 cm) | 4.0 in (10.16 cm) | 2 lbs (.90 kg) |
| ENVIRONMENTAL / POWER / HARDWARE | | | | |
| Power Frequency | 9V DC @1A external transformer | | | |
| Supported Hardware - Computer | PS/2 | | | |
| Supported Hardware - Monitor | (VGA, SVGA, XGA, QVGA, SXGA, UXGA, QXGA) Maximum resolution 2048 X 1536 | | | |
| Supported Hardware - Peripherals | PS/2 keyboard, PS/2 mouse, Intellimouse (PS/2 only), IBM Scroll Point, Logitech 2 Button, Logitech Trackball Scroller, Microsoft Trackball Scroller, Microsoft Scroller, Microsoft Intelleye Five Button | | | |
| STANDARDS | | | | |
| Approved Agency | En55022 Class B, EN55024,61000-3-2,6100-3-3, FCC 15 Class B, CE | | | |

THE EASE OF KVM Switching



SwitchView PC

Easily control up to four PS/2 computers from one keyboard, monitor and mouse.



SwitchView Multimedia

Switch between USB or PS/2 systems, share your USB devices and control multimedia applications.



SwitchView DVI

Manage up to four USB DVI computers from a single USB keyboard, mouse and DVI monitor.

About Avocent

Avocent is the leading global provider of KVM switching and network connectivity solutions with more than two decades of experience in providing KVM switching, remote access and serial connectivity solutions. KVM switching systems eliminate the need for extra keyboards, monitors and mice and allow businesses to save critical space on the desktop and in data centers.

Avocent KVM and related solutions are installed in home offices, small businesses, Fortune 100 companies and other client sites around the world. Customers include Microsoft Corp., Intel, HP, Dell, Time Warner, GE, Exxon Mobile, FedEx and Home Depot, among others.

Avocent stock is traded as AVCT on the NASDAQ Stock Market. More information on Avocent is available at www.avocent.com.