

HARSH ENVIRONMENTS WASH-THRU™ MOTORS

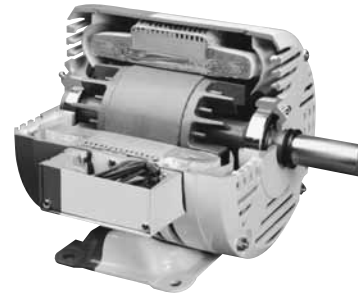


240/460 VOLTS • 3-PHASE
FOOT MOUNT & C-FACE

Lincoln's revolutionary Wash-Thru™ design utilizes **Pressure Encapsulation Technology** for unbeatable winding protection and unsurpassed motor life in many harsh environments. Wash-Thru™ motors can provide an improvement in plant efficiency and a reduction in maintenance costs due to an increase in process up-time.

Features:

- Pressure Encapsulation Technology – thermosetting polyester-based resin is forced into and around the motor windings impregnating and encapsulating coil noses and filling stator slots. A silicone-based coating on stator bore surfaces completes the process. The result is unbeatable protection from excessive moisture, chemical action and vibration.
- Full length 303 stainless steel shaft.
- Double-sealed bearings and v-ring shaft slinger.
- Laser etched, stainless steel nameplate for permanent motor identification.
- Premium Class F Insulation system
- FDA approved white finish coat
- Warranty (sine-wave and inverter power) – 18 months from date of manufacture and 12 months from date of installation which ever period expires first.
- Made in U.S.A.



Cutaway model shows encapsulated windings.

Applications:

Exceptional choice for demanding uses in poultry, seafood, meat and other food processing plants. Other applications include areas where a high degree of dust, moisture, and vibration exist.

Supporting Information:

Dimensions: 56-56H-143T – Contact your local sales office
Performance: Contact your local sales office

Speed ranges (continuous duty) on variable-frequency electronic speed controls (inverters):

- Constant Torque: 45 to 60 Hz
- Variable Torque: 6 to 60 Hz

FOOT MOUNT

HP	SYN RPM	Frame	FL Nom Eff (%)	SF	Volts	Model Number	Product Number	Notes (see page 306)	Approx Shpg Wght (lbs)	List Price	Mult Sym
1/2	3600	56	70.0	1.00	230/460	SREW2S0.5T61	LM21031		30	\$767	LT-1A
	1800	56	68.0	1.00	230/460	SREW4S0.5T61	LM20655		26	827	LT-1A
	1200	56	70.0	1.00	230/460	SREW6S0.5T61	LM25419		28	1027	LT-1A
3/4	3600	56	74.0	1.00	230/460	SREW2S0.75T61	LM21034		30	814	LT-1A
	1800	56	75.5	1.00	230/460	SREW4S0.75T61	LM20658		24	858	LT-1A
	1200	56	77.5	1.00	230/460	SREW6S0.75T61	LM22163		33	1052	LT-1A
1	3600	56	78.5	1.00	230/460	SREW2S1T61	LM21037		30	885	LT-1A
	1800	56	77.0	1.00	230/460	SREW4S1T61	LM21061		30	898	LT-1A
	1800	143T	77.0	1.00	230/460	SREW4S1T61	LM20667		35	898	LT-1A
	1200	56H	72.0	1.00	230/460	SREW6S1T61	LM25420		34	1159	LT-1A
	1200	145T	75.5	1.00	230/460	SREW6S1T61	LM24280		34	1160	LT-1A
1 1/2	3600	K56	78.5	1.00	230/460	SREW2S1.5T61	LM21040		30	944	LT-1A
	3600	143T	78.5	1.00	230/460	SREW2S1.5T61	LM21046		35	981	LT-1A
	1800	56H	80.0	1.00	230/460	SREW4S1.5T61	LM21062		30	936	LT-1A
	1800	145T	80.0	1.00	230/460	SREW4S1.5T61	LM20670		35	936	LT-1A
	1200	182T	81.5	1.00	230/460	SREW6S1.5T61	LM25421		35	1691	LT-1A
2	3600	56H	78.5	1.00	230/460	SREW2S2T61	LM21043		34	1051	LT-1A
	3600	145T	82.5	1.00	230/460	SREW2S2T61	LM21049		35	1094	LT-1A
	1800	56H	81.5	1.00	230/460	SREW4S2T61	LM21063		34	1148	LT-1A
	1800	145T	81.5	1.00	230/460	SREW4S2T61	LM20673		35	1120	LT-1A
	1200	184T	80.0	1.00	230/460	SREW6S2T61	LM25422		70	1868	LT-1A

Prices and data subject to change without notice.

Product numbers in red are STOCK items.



HARSH ENVIRONMENTS WASH-THRU™ MOTORS

240/460 VOLTS • 3-PHASE
FOOT MOUNT & C-FACE

FOOT MOUNT (cont'd)

HP	SYN RPM	Frame	FL Nom Eff (%)	SF	Volts	Model Number	Product Number	Notes (see page 306)	Approx Shpg Wght (lbs)	List Price	Mult Sym
3	3600	182T	81.5	1.00	230/460	SSEW2S3T61	LM21052		64	\$1306	LT-1A
	1800	182T	89.5	1.00	230/460	SSEW4S3T61	LM20676		64	1462	LT-1A
	1200	213T	78.5	1.00	230/460	SSEW6S3T61	LM25423		109	2345	LT-1A
5	3600	184T	81.5	1.00	230/460	SSEW2S5T61	LM21055		70	1849	LT-1A
	1800	184T	87.5	1.00	230/460	SSEW4S5T61	LM20679		70	1663	LT-1A
	1200	215T	82.5	1.00	230/460	SSEW6S5T61	LM25424		125	3087	LT-1A
7 1/2	3600	213T	81.5	1.00	230/460	SSEW2S7.5T61	LM22423		109	2301	LT-1A
	1800	213T	81.5	1.00	230/460	SSEW4S7.5T61	LM22435		109	2116	LT-1A
	1200	254T	86.5	1.00	230/460	SSEW6S7.5T61	LM23931		208	4577	LT-1A
10	3600	215T	84.0	1.00	230/460	SSEW2S10T61	LM22426		125	2746	LT-1A
	1800	215T	84.0	1.00	230/460	SSEW4S10T61	LM22438		125	2417	LT-1A

C-FACE WITH FEET

HP	SYN RPM	Frame	FL Nom Eff (%)	SF	Volts	Model Number	Product Number	Notes (see page 306)	Approx Shpg Wght (lbs)	List Price	Mult Sym
1/2	3600	56C	70.0	1.00	230/460	SREW2S0.5TC61	LM21032		35	\$808	LT-1A
	1800	56C	68.0	1.00	230/460	SREW4S0.5TC61	LM20656		35	869	LT-1A
3/4	3600	56C	74.0	1.00	230/460	SREW2S0.75TC61	LM21035		35	856	LT-1A
	1800	56C	75.5	1.00	230/460	SREW4S0.75TC61	LM20659		35	899	LT-1A
1	3600	56C	78.5	1.00	230/460	SREW2S1TC61	LM21038		35	929	LT-1A
	1800	56C	77.0	1.00	230/460	SREW4S1TC61	LM20661		35	938	LT-1A
	1800	143TC	77.0	1.00	230/460	SSEW4S1TC61	LM20668		40	938	LT-1A
1 1/2	3600	56C	81.5	1.00	230/460	SREW2S1.5TC61	LM21041		35	987	LT-1A
	3600	143TC	78.5	1.00	230/460	SSEW2S1.5TC61	LM21047		40	1021	LT-1A
	1800	56HC	80.0	1.00	230/460	SREW4S1.5TC61	LM20663		35	979	LT-1A
	1800	145TC	80.0	1.00	230/460	SSEW4S1.5TC61	LM20671		40	979	LT-1A
2	3600	56HC	82.5	1.00	230/460	SREW2S2TC61	LM21044		40	1092	LT-1A
	3600	145TC	78.5	1.00	230/460	SSEW2S2TC61	LM21050		40	1135	LT-1A
	1800	56HC	81.5	1.00	230/460	SREW4S2TC61	LM20665		40	1189	LT-1A
	1800	145TC	81.5	1.00	230/460	SSEW4S2TC61	LM20674		40	1162	LT-1A
3	3600	182TC	81.5	1.00	230/460	SSEW2S3TC61	LM21053		73	1369	LT-1A
	1800	182TC	81.5	1.00	230/460	SSEW4S3TC61	LM20677		73	1526	LT-1A
5	3600	184TC	81.5	1.00	230/460	SSEW2S5TC61	LM21056		79	1911	LT-1A
	1800	184TC	81.5	1.00	230/460	SSEW4S5TC61	LM20680		79	1726	LT-1A
7 1/2	3600	213TC	81.5	1.00	230/460	SSEW2S7.5TC61	LM22424		121	2374	LT-1A
	1800	213TC	81.5	1.00	230/460	SSEW4S7.5TC61	LM22436		121	2189	LT-1A
10	3600	215TC	84.0	1.00	230/460	SSEW2S10TC61	LM22427		139	2818	LT-1A
	1800	215TC	84.0	1.00	230/460	SSEW4S10TC61	LM22439		139	2490	LT-1A

Prices and data subject to change without notice.

Product numbers in red are STOCK items.

HARSH ENVIRONMENTS WASH-THRU™ MOTORS



240/460 VOLTS • 3-PHASE
FOOT MOUNT & C-FACE

C-FACE FOOTLESS

HP	SYN RPM	Frame	FL Nom Eff (%)	SF	Volts	Model Number	Product Number	Notes (see page 306)	Approx Shpg Wght (lbs)	List Price	Mult Sym
1/2	3600	56C	70.0	1.00	230/460	SREW2S0.5TCN61	LM21033		35	\$808	LT-1A
	1800	56C	74.0	1.00	230/460	SREW4S0.5TCN61	LM20657		35	869	LT-1A
3/4	3600	56C	74.0	1.00	230/460	SREW2S0.75TCN61	LM21036		35	856	LT-1A
	1800	56C	77.0	1.00	230/460	SREW4S0.75TCN61	LM20660		35	899	LT-1A
1	3600	56C	75.5	1.00	230/460	SREW2S1TCN61	LM21039		35	927	LT-1A
	1800	56C	78.5	1.00	230/460	SREW4S1TCN61	LM20662		35	938	LT-1A
	1800	143TC	78.5	1.00	230/460	SSEW4S1TCN61	LM20669		40	938	LT-1A
1 1/2	3600	56C	78.5	1.00	230/460	SREW2S1.5TCN61	LM21042		35	987	LT-1A
	3600	143TC	78.5	1.00	230/460	SSEW2S1.5TCN61	LM21048		40	1021	LT-1A
	1800	56HC	80.0	1.00	230/460	SREW4S1.5TCN61	LM20664		35	979	LT-1A
	1800	145TC	80.0	1.00	230/460	SSEW4S1.5TCN61	LM20672		40	979	LT-1A
2	3600	56HC	78.5	1.00	230/460	SREW2S2TCN61	LM21045		40	1092	LT-1A
	3600	145TC	78.5	1.00	230/460	SSEW2S2TCN61	LM21051		40	1135	LT-1A
	1800	56HC	81.5	1.00	230/460	SREW4S2TCN61	LM20666		40	1189	LT-1A
	1800	145TC	81.5	1.00	230/460	SSEW4S2TCN61	LM20675		40	1161	LT-1A
3	3600	182TC	81.5	1.00	230/460	SSEW2S3TCN61	LM21054		73	1369	LT-1A
	1800	182TC	81.5	1.00	230/460	SSEW4S3TCN61	LM20678		73	1526	LT-1A
5	3600	184TC	81.5	1.00	230/460	SSEW2S5TCN61	LM21057		79	1911	LT-1A
	1800	184TC	81.5	1.00	230/460	SSEW4S5TCN61	LM20681		79	1726	LT-1A
7 1/2	3600	213TC	81.5	1.00	230/460	SSEW2S7.5TCN61	LM22425		121	2374	LT-1A
	1800	213TC	81.5	1.00	230/460	SSEW4S7.5TCN61	LM22437		121	2189	LT-1A
10	3600	215TC	84.0	1.00	230/460	SSEW2S10TCN61	LM22428		139	2818	LT-1A
	1800	215TC	84.0	1.00	230/460	SSEW4S10TCN61	LM22440		139	2490	LT-1A

Prices and data subject to change without notice.

Product numbers in red are STOCK items.



S.S. WET-LINC™ TOTALLY ENCLOSED WASHDOWN • STAINLESS STEEL MOTORS

208-230/460 VOLTS • 3-PHASE

Features:

- Rust-free, corrosion resistant
- Totally enclosed, paint-free exterior reduces contamination
- Long lasting components made from 300 series stainless steel (frame, base, end brackets, terminal box, shaft extension, fan cover and hardware)
- Clean design with nameplate etched on the frame
- Leak resistant double sealed bearings and shaft seals
- Multiple, repositional drains provide moisture outlet regardless of motor mounting angle
- Inverter-rated, quality UL recognized components listing and CSA
- Warranty: 18 months from manufacture date 12 months from installation, whichever comes first



Applications:

- Food Processing
- Pharmaceutical
- Packaging
- High Humidity Environments
- Chemical

C-FACE WITH FEET

HP	SYN RPM	Frame	FL Nom Eff (%)	SF	Volts	Model Number	Product Number	Notes (see page 306)	Approx Shpg Wght (lbs)	List Price	Mult Sym
1/3	1800	56C	78.5	1.15	208-230/460	SRNWA4SO.33TC6-26AP21	LM29189	D-191201	27	\$644	LT-1A
1/2	1800	56C	81.5	1.15	208-230/460	SRNWA4SO.5TC6-26AP21	LM29191	D-191204	30	664	LT-1A
3/4	1800	56C	82.5	1.15	208-230/460	SRNWA4SO.75TC6-26AP21	LM29193	D-191207	35	767	LT-1A
1	1800	56HC	82.5	1.15	208-230/460	SRFWA4S1TC6026AP21	LM29213	D-191291	44	800	LT1-A
	1800	140TC	82.5	1.15	208-230/460	SSFWA4S1TC6026AP21	LM29214	D-191211	39	861	LT1-B
	1800	56C	81.5	1.15	208-230/460	SRNWA4S1TC6026AP21	LM29601	D-G191212	45	797	LT1-A
1 1/2	1800	56HC	84.0	1.15	208-230/460	SRFWA4S1.5TC6026AP21	LM29217	D-191217	45	834	LT1-A
	1800	140TC	84.0	1.15	208-230/460	SSFWA4S1.5TC6026AP21	LM29218	D-G191218	46	896	LT1-B
2	1800	56HC	84.0	1.15	208-230/460	SRFWA4S2TC6026AP21	LM29221	D-191223	49	951	LT-1A
	1800	140TC	84.0	1.15	208-230/460	SSFWA4S2TC6026AP21	LM29222	D-G191224	53	1064	LT-1B

C-FACE FOOTLESS

HP	SYN RPM	Frame	FL Nom Eff (%)	SF	Volts	Model Number	Product Number	Notes (see page 306)	Approx Shpg Wght (lbs)	List Price	Mult Sym
1/3	1800	56C	78.5	1.15	208-230/460	SRNWA4S0.33TCN6026AP21	LM29190	D-191202	22	\$639	LT1-A
1/2	1800	56C	81.5	1.15	208-230/460	SRNWA4S0.5TCN6026AP21	LM29192	D-191205	23	657	LT1-A
3/4	1800	56C	82.5	1.15	208-230/460	SRNWA4S0.75TCN6026AP21	LM29194	D-191208	31	765	LT1-A
1	1800	56C	82.5	1.15	208-230/460	SRFWA4S1TCN6026AP21	LM29215	D-191290	37	797	LT1-A
	1800	56C	81.5	1.15	208-230/460	SRNWA4S1TCN6026AP21	LM29600	D-191213	37	800	LT1-A
	1800	140TC	82.5	1.15	208-230/460	SSFWA4S1TCN6026AP21	LM29216	D-191214	38	821	LT1-B
1 1/2	1800	56C	84	1.15	208-230/460	SRFWA4S1.5TCN6026AP21	LM29219	D-191219	44	831	LT1-A
	1800	140TC	84	1.15	208-230/460	SSFWA4S1.5TCN6026AP21	LM29220	D-191220	45	854	LT1-B
2	1800	56C	84	1.15	208-230/460	SRFWA4S2TCN6026AP21	LM29223	D-191225	51	948	LT1-A
	1800	140TC	84	1.15	208-230/460	SSFWA4S2TCN6026AP21	LM29224	D-191226	52	977	LT1-B

Prices and data subject to change without notice.

D – items to be deleted once inventory is depleted. Replaced with the listed LEESON catalog number.

Product numbers in red are STOCK items.