

FRACTIONAL HP

GENERAL PURPOSE

NEMA PREMIUM EFFICIENCY

CRUSHER® DUTY

IEC TRU-METRIC™

PUMP MOTORS

DEFINITE PURPOSE

ADD-ON™ MODIFICATIONS

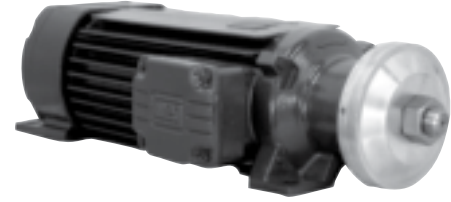
MOTOR TECHNICAL DATA

DRIVES & SOFT STARTERS

CONTROLS

THREE PHASE

Single and double shaft end available, these motors are suitable for a wide range of applications such as circular saws, pendulum saws, polishing machines and others. Motors are all cast iron and have service factor 1.0. They can replace conventional circular saw drive systems



APPLICATIONS

- Circular saws
- Pendulum saws
- Grinding machines
- Polishing machines

STANDARD FEATURES

- Three-phase, 60Hz, II and IV Poles.
- Voltage: 208-230/460 V or 575 V
- 80S-MS up to 90L-MS - IEC metric frames
- Squirrel cage rotor / Aluminum die cast
- Totally Enclosed Fan Cooled - TEFC (IP54 according to IEC34-5 standard)
- Cast iron frame
- Ball bearings
- Dimensions according to IEC 72
- Class 'F' insulation
- Service factor: 1.0
- Continuous duty (S1)
- 104°F (40°C) ambient temperature
- Altitude: 3300 ft (1000 m)
- 1045 carbon steel shaft
- F1 mount
- Stainless steel nameplate
- Paint: Enamel alkyd resin base
- Color: RAL 7022 (Dark Gray)
- PG threaded terminal box
- Temperature rise: Class 'B' (80°)

OPTIONAL FEATURES

- Special voltages
- Specially dimensioned shaft
- NPT, metric, etc. threaded holes at terminal box
- Stainless steel shaft
- Double shaft

- IEC metric frame motors
- All cast iron - strong, reliable design & construction
- Single and double shaft end available
- Can advantageously replace conventional circular saw drive systems.



SAW ARBOR MOTORS



TEFC – THREE-PHASE

HP	RPM	NEMA Frame	Catalog Number	List Price	Mult.	Approx. Shipp. Weight Lbs	FL Amps 460V	FL Eff. %	"C" Dimension (in.)	Voltage
3	3600	80S	00336ES3ESA80SL	969	O1	105	4.80	79.2	18.543	208-230/460V
	3600	80S	00336ES3ESA80SR	969	O1	105	4.80	79.2	18.543	208-230/460V
5	3600	80M	00536ES3ESA80ML	1,160	O1	117	7.00	85.0	20.512	208-230/460V
	3600	80M	00536ES3ESA80MR	1,160	O1	117	7.00	85.0	20.512	208-230/460V
	1800	90L	00518ES3ESA90LL	1,701	O1	158	7.50	84.0	26.457	208-230/460V
	1800	90L	00518ES3ESA90LR	1,701	O1	158	7.50	84.0	26.457	208-230/460V
7.5	3600	80L	00736ES3ESA80LL	1,642	O1	141	10.5	87.4	22.480	208-230/460V
	3600	80L	00736ES3ESA80LR	1,642	O1	141	10.5	87.4	22.480	208-230/460V
	3600	80L	00736ES3HSA80LL	1,642	O1	141	10.5	87.4	22.480	575V
	3600	80L	00736ES3HSA80LR	1,642	O1	141	10.5	87.4	22.480	575V
	1800	90L	00718ES3ESA90LL	1,855	O1	170	10.1	84.0	26.457	208-230/460V
	1800	90L	00718ES3ESA90LR	1,855	O1	170	10.1	84.0	26.457	208-230/460V
10	3600	90L	01036ES3ESA90LL	1,953	O1	170	13.0	83.0	26.457	208-230/460V
	3600	90L	01036ES3ESA90LR	1,953	O1	170	13.0	83.0	26.457	208-230/460V
	3600	90L	01036ES3HSA90LL	1,953	O1	170	13.0	83.0	26.457	575V
	3600	90L	01036ES3HSA90LR	1,953	O1	170	13.0	83.0	26.457	575V
	1800	90L	01018ES3ESA90LL	2,176	O1	182	14.4	84.0	26.457	208-230/460V
	1800	90L	01018ES3ESA90LR	2,176	O1	182	14.4	84.0	26.457	208-230/460V

- ELECTRICAL FEATURES ON PAGE B-45.
- MECHANICAL FEATURES ON PAGE B-95.

FRACTIONAL HP

GENERAL PURPOSE

NEMA PREMIUM EFFICIENCY

CRUSHER® DUTY

IEC TRU-METRIC™

PUMP MOTORS

DEFINITE PURPOSE

ADD-ON™ MODIFICATIONS

MOTOR TECHNICAL DATA

DRIVES & SOFT STARTERS

CONTROLS