



SUB-FHP DC GEARMOTORS

PARALLEL SHAFT GEARMOTORS

**SCR RATED:
10-100 In-Lbs Torque**

**LOW VOLTAGE:
36-100 In-Lbs Torque**

Electrical Specifications:

SCR Rated Gearmotors

Totally enclosed, permanent magnet DC gearmotors, performance matched for continuous duty service over a 60:1 speed range. All have constant torque throughout the range when powered by a full-wave unfiltered SCR-type adjustable speed control having a typical form factor of 1.3 to 1.4.



Low Voltage Gearmotors

Totally enclosed, permanent magnet DC gearmotors, performance matched for continuous duty. Motors are designed for battery power or can be used with a low voltage controller with form factor up to 1.05.

Mechanical Specifications:

Precision machined in-line steel gears, with a first stage steel helical gear followed by spur-type gears. Lubrication is permanent semi-fluid grease, reducing possibility of leakage. Output shafts have needle bearings for high load capacities. Shafts are hardened steel.

Conduit box not included with motor. Optional conduit box and PZ gearmotor mounting bracket shown on page 107.

Application Notes:

These gearmotors are designed for mounting at any angle, but motor below the reducer should be avoided to prevent leakage of lubricant into the motor should the motor shaft seal fail.

The motor's stall torque could exceed recommended full load torques. If this service is anticipated, a current limiting device should be used. This issue is even more critical for low voltage motors, typically no controller is used since motor connected directly to battery, so some type of current limit or fusing should be considered.

Overhung load capacities shown are at center of output shaft.

Model PZ gearmotors have the same mounting dimensions as Bodine model D and Z, Baldor/Boehm, Bison 100 gearmotors, and a number of Dayton gearmotors.

For additional information, see Bulletin 1830.

**BODINE/BISON/DAYTON
DIRECT INTERCHANGE**

PZ SERIES DC • SCR RATED PARALLEL SHAFT • TENV • 1.0 SERVICE FACTOR

Output RPM	F.L. Torque (Lb.In.)	Input HP	Catalog Number	List Price▲	Gearmotor Type & Frame	Ratio to 1	Arm. Volts DC	F.L. Amps DC	Over-hung Load (Lb.)	DIMENSIONS			
										P	X	XL	XH
4	40	1/40	M1115002	\$404	PZ5-30A	450	90	0.46	155	3.00	3.25	9.28	7.72
4	40	1/40	M1125046	404	PZ5-30A	450	180	0.19	155	3.00	3.25	9.30	7.74
10	100	1/20	M1115001	404	PZ4-30E	180	90	0.54	155	3.00	3.25	9.28	7.72
10	100	1/20	M1125047	404	PZ4-30A	180	180	0.31	155	3.00	3.25	9.30	7.74
20	100	1/20	M1115000	404	PZ4-30E	90	90	0.54	155	3.00	3.25	9.28	7.72
20	100	1/20	M1125048	404	PZ4-30A	90	180	0.31	155	3.00	3.25	9.30	7.74
30	100	1/17	M1125002	439	PZ3-30B	60	90	0.80	155	3.00	2.68	8.74	7.18
30	100	1/17	M1125037	439	PZ3-30B	60	180	0.36	155	3.00	2.68	8.74	7.18
60	56	1/17	M1125003	439	PZ3-30B	30	90	0.80	171	3.00	2.68	8.74	7.18
60	56	1/17	M1125036	439	PZ3-30B	30	180	0.36	171	3.00	2.68	8.74	7.18
100	36	1/17	M1125004	439	PZ3-30B	18	90	0.80	171	3.00	2.68	8.74	7.18
100	36	1/17	M1125035	439	PZ3-30B	18	180	0.36	171	3.00	2.68	8.74	7.18
150	24	1/17	M1125005	417	PZ2-30B	12	90	0.80	180	3.00	2.40	8.46	6.90
150	24	1/17	M1125034	417	PZ2-30B	12	180	0.36	180	3.00	2.40	8.46	6.90
300	10	1/17	M1125006	417	PZ2-30B	6	90	0.80	180	3.00	2.40	8.46	6.90
300	10	1/17	M1125033	417	PZ2-30B	6	180	0.36	180	3.00	2.40	8.46	6.90

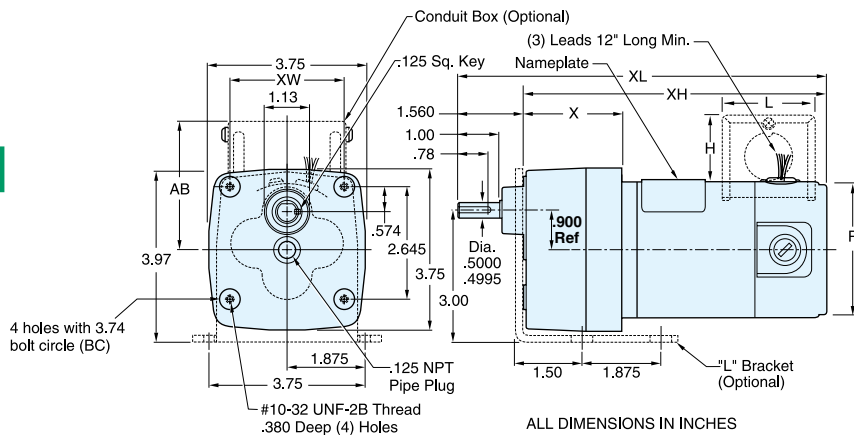
▲ Use "S" discount symbol.

PZ SERIES DC • LOW VOLTAGE (12V) PARALLEL SHAFT • TENV • 1.0 SERVICE FACTOR

Output RPM	F.L. Torque (Lb.In.)	Input HP	Catalog Number	List Price▲	Gearmotor Type & Frame	Ratio to 1	Arm. Volts DC	F.L. Amps DC	Over-hung Load (Lb.)	DIMENSIONS			
										P	X	XL	XH
10	100	1/20	M1125213	\$447	PZ4-30	180	12	2.7	155	3.00	3.25	9.28	7.72
30	100	1/17	M1125214	474	PZ3-30	60	12	5.2	155	3.00	2.68	8.74	7.18
55	56	1/17	M1125215	474	PZ3-30	30	12	5.6	171	3.00	2.68	8.74	7.18

▲ Use "S" discount symbol.

PZ SERIES - DC



CONDUIT BOX DIMENSIONS (IN.)

FRAME	XW	AB	H	L
30/31	2.63	3.47	1.90	3.13

QUICK REFERENCE

- GEARMOTOR CROSS REFERENCE Page 163
- "L" BRACKET AND CONDUIT BOX. 107
- SPEEDMASTER® CONTROLS. 121

**SCR RATED:
27-353 In-Lbs Torque**

**LOW VOLTAGE:
113-353 In-Lbs Torque**

Electrical Specifications:

SCR Rated Gearmotors

Totally enclosed, permanent magnet DC gearmotors, performance matched for continuous duty service over a 60:1 speed range. All have constant torque throughout the range when powered by a full-wave unfiltered SCR-type adjustable speed control having a typical form factor of 1.3 to 1.4.



Low Voltage Gearmotors

Totally enclosed, permanent magnet DC gearmotors, performance matched for continuous duty. Motors are designed for battery power or can be used with a low voltage controller with form factor up to 1.05.

Mechanical Specifications:

Precision machined in-line steel gears, with a first stage steel helical gear followed by spur-type gears. Lubrication is permanent semi-fluid grease, reducing possibility of leakage. Output shafts have needle bearings for high load capacities. Shafts are hardened steel.

Conduit box not included with motor. Optional conduit box shown on page 107.

Application Notes:

These gearmotors are designed for mounting at any angle, but shaft up with motor below should be avoided to prevent leakage of lubricant into the motor should the motor's shaft seal fail.

Overhung load capacities shown are at center of output shaft.

The motor's stall torque exceeds recommended full load torques. A current limiting device such as an SCR control should be used to prevent damage. Model 300 gearmotors have the same mounting dimensions as Bison's 300 and many Dayton gearmotors.

For additional information, see Bulletin 1830.

**P300 SERIES DC • SCR RATED
PARALLEL SHAFT • TENV • 1.0 SERVICE FACTOR**

Output RPM	F.L. Torque (Lb.In.)	Input HP	Catalog Number	List Price▲	Gearmotor Type & Frame	Ratio to 1	Arm. Volts DC	F.L. Amps. DC	Over-hung Load (Lb.)	DIMENSIONS			
										P	X	XL	XH
5	353	1/20	M1115024	\$578	P303-30E	336	90	0.54	565	3.00	3.54	10.07	8.57
9	268	1/20	M1115025	578	P303-30E	216	90	0.54	474	3.00	3.54	10.07	8.57
18	150	1/20	M1115026	578	P303-30E	103	90	0.54	385	3.00	3.54	10.07	8.57
20	140	1/20	M1125092	593	P303-31E	90	180	0.31	370	3.11	3.54	10.07	8.57
24	280	1/8	M1125069	593	P303-30E	76	90	1.30	353	3.00	3.54	11.54	10.04
31	220	1/8	M1125070	593	P303-30E	58	90	1.30	327	3.00	3.54	11.54	10.04
31	220	1/8	M1125038	593	P303-30E	58	180	0.66	327	3.00	3.54	11.54	10.04
34	82	1/20	M1115027	578	P303-30E	52	90	0.54	318	3.00	3.54	10.07	8.57
51	130	1/8	M1125071	545	P302-30E	35	90	1.30	277	3.00	3.54	11.54	10.04
51	130	1/8	M1125039	545	P302-30E	35	180	0.66	277	3.00	3.54	11.54	10.04
51	55	1/20	M1115028	532	P302-30E	35	90	0.54	281	3.00	3.54	10.07	8.57
61	113	1/8	M1125072	545	P302-30E	29	90	1.30	267	3.00	3.54	11.54	10.04
60	45	1/20	M1125093	545	P302-31E	29	180	0.31	267	3.11	3.54	10.07	8.57
94	77	1/8	M1125073	545	P302-30E	19	90	1.30	236	3.00	3.54	11.54	10.04
94	77	1/8	M1125040	545	P302-30E	19	180	0.66	236	3.00	3.54	11.54	10.04
109	27	1/20	M1115029	532	P302-30E	16	90	0.54	224	3.00	3.54	10.07	8.57
106	26	1/20	M1125094	532	P302-31E	16	180	0.31	222	3.11	3.54	10.07	8.57
167	43	1/8	M1125074	545	P302-30E	11	90	1.30	197	3.00	3.54	11.54	10.04
170	43	1/8	M1125041	545	P302-30E	11	180	0.66	196	3.00	3.54	11.54	10.04

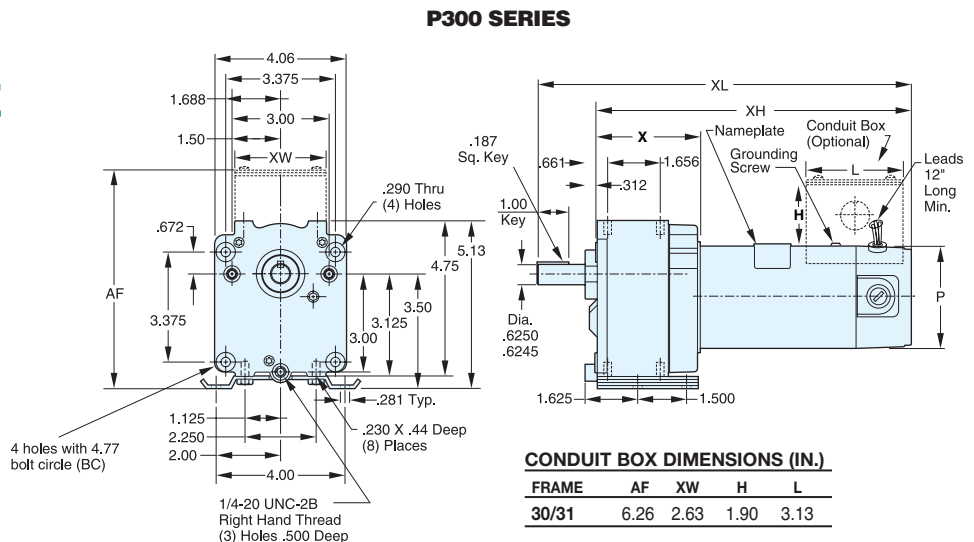
▲ Use "S" discount symbol.

**P300 SERIES DC • LOW VOLTAGE (12V)
PARALLEL SHAFT • TENV • 1.0 SERVICE FACTOR**

Output RPM	F.L. Torque (Lb.In.)	Input HP	Catalog Number	List Price▲	Gearmotor Type & Frame	Ratio to 1	Arm. Volts DC	F.L. Amps. DC	Over-hung Load (Lb.)	DIMENSIONS			
										P	X	XL	XH
5	353	1/20	M1125217	\$593	P303-30	336	12	5.6	565	3.00	3.85	10.07	8.57
31	220	1/8	M1125218	607	P303-30	58	12	10.6	327	3.00	3.54	11.54	10.04
51	130	1/8	M1125219	558	P302-30	35	12	10.3	277	3.00	3.23	11.54	10.04
61	113	1/8	M1125220	558	P302-30	29	12	10.4	267	3.00	3.23	11.54	10.04

▲ Use "S" discount symbol.

**BISON/DAYTON
DIRECT INTERCHANGE**





SUB-FHP DC GEARMOTORS

OFF-SET SHAFT GEARMOTORS

SCR RATED: 130-268 In-Lbs Torque

LOW VOLTAGE: 130-268 In-Lbs Torque

Electrical Specifications:

SCR Rated Gearmotors

Totally enclosed, permanent magnet DC gearmotors, performance matched for continuous duty service over a 60:1 speed range. All have constant torque throughout the range when powered by a full-wave unfiltered SCR-type adjustable speed control having a typical form factor of 1.3 to 1.4.

Low Voltage Gearmotors

Totally enclosed, permanent magnet DC gearmotors, performance matched for continuous duty. Motors are designed for battery power or can be used with a low voltage controller with form factor up to 1.05.

Mechanical Specifications:

Precision machined steel gears, with a first stage steel helical gear followed by spur-type gears. Lubrication is permanent semi-fluid grease, reducing possibility of leakage. Output shafts have needle bearings for high load capacities. Shafts are hardened steel.

Conduit box *not* included with motor. Optional conduit box shown on page 107.

Application Notes:

These gearmotors are designed for mounting at any angle, but shaft up with motor below should be avoided to prevent leakage of lubricant into the motor should the motor's shaft seal fail.

Overhung load capacities shown are at center of output shaft.

The motor's stall torque exceeds recommended full load torques. A current limiting device such as an SCR control should be used to prevent damage.



OS300 SERIES DC • SCR RATED

OFF-SET SHAFT • TENV • 1.0 SERVICE FACTOR

Output RPM	F.L. Torque (Lb.In.)	Input HP	Catalog Number	List Price▲	Gearmotor Type & Frame	Ratio	Arm Volts DC	F.L. Amps DC	Overhung Load Lbs.	P	DIMENSIONS Inches		
											X	XL	XH
9	268	1/20	M1125251	\$487	OS303-30	210	90	.54	474	3.00	2.81	4.50	8.52
19	150	1/20	M1125250	487	OS303-30	103	90	.56	385	3.00	2.81	4.50	8.52
24	280	1/8	M1125249	500	OS303-30	76	90	1.3	353	3.00	2.81	6.42	10.45
31	220	1/8	M1125248	500	OS303-30	58	90	1.4	327	3.00	2.81	6.42	10.45
51	130	1/8	M1125247	500	OS303-30	35	90	1.4	277	3.00	2.81	6.42	10.45

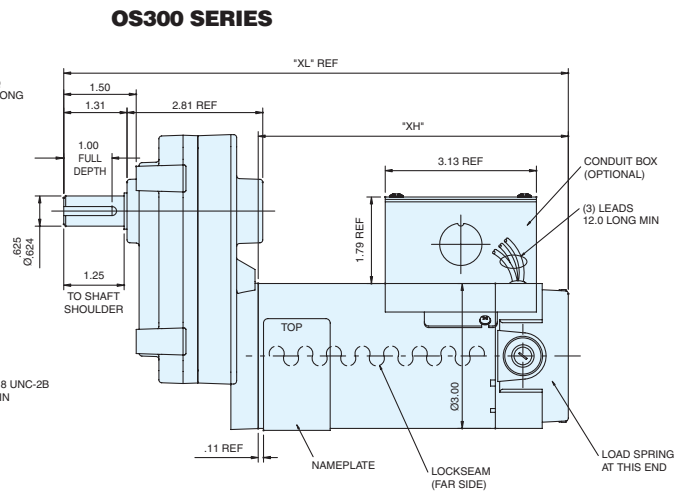
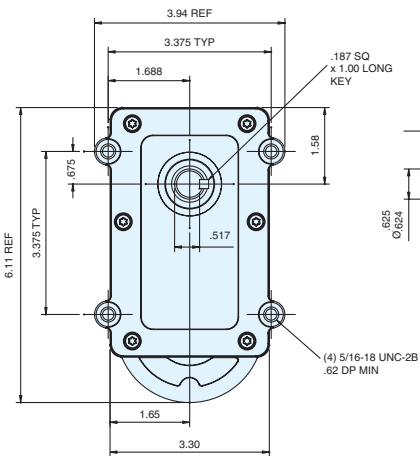
OS300 SERIES DC • LOW VOLTAGE (12V)

OFF-SET SHAFT • TENV • 1.0 SERVICE FACTOR

Output RPM	F.L. Torque (Lb.In.)	Input HP	Catalog Number	List Price▲	Gearmotor Type & Frame	Ratio	Arm Volts DC	F.L. Amps DC	Overhung Load Lbs.	P	DIMENSIONS Inches		
											X	XL	XH
9	268	1/20	M1125256	\$500	OS303-30	210	12	4.5	474	3.00	2.81	4.50	8.52
18	150	1/20	M1125255	500	OS303-30	103	12	5.0	385	3.00	2.081	4.50	8.52
24	280	1/8	M1125254	512	OS303-30	76	12	10.6	353	3.00	2.81	6.42	10.45
31	220	1/8	M1125253	512	OS303-30	58	12	10.6	327	3.00	2.81	6.42	10.45
51	130	1/8	M1125252	512	OS303-30	35	12	10.3	277	3.00	2.81	6.42	10.45

▲ Use "S" discount symbol.

Gearmotors



ALL DIMENSIONS IN INCHES

**SCR RATED:
25-371 In-Lbs Torque**
**LOW VOLTAGE:
155-341 In-Lbs Torque**

Electrical Specifications:

SCR Rated Gearmotors

Totally enclosed, permanent magnet DC gearmotors, performance matched for continuous duty service over a 60:1 speed range. All have constant torque throughout the range when powered by a full-wave unfiltered SCR-type adjustable speed control having a typical form factor of 1.3 to 1.4.



Low Voltage Gearmotors

Totally enclosed, permanent magnet DC gearmotors, performance matched for continuous duty. Motors are designed for battery power or can be used with a low voltage controller with form factor up to 1.05.

Mechanical Specifications:

Gearbox has rugged aluminum die cast housing, for maximum gear and bearing support. Precision machined gearing, hardened for maximum load capability. All gearing designed and rated to AGMA Class 9 standards and to withstand momentary shock overload of 200%. Oversized output bearings for greater overhung load capacity and longer life. High-carbon alloy output shaft provides maximum strength and rigidity. All needle bearing journals are precision-ground after heat treating, to provide maximum finish and fit. Heavy-duty industrial oil seals help keep lubricant in and dirt out. Gears and bearings are splash lubricated with permanent, heavy-duty gear oil.

Conduit box *not* included with motor. Optional conduit box shown on page 107.

Application Notes:

These gearmotors are designed for mounting at any angle, but shaft up with motor below should be avoided to prevent leakage of lubricant into the motor should the motor's shaft seal fail.

Overhung load capacities shown are at center of output shaft.

The motor's stall torque exceeds recommended full load torques. A current limiting device such as an SCR control should be used to prevent damage.

Model PE350 gearmotors have the same mounting dimensions as Bodine's "E" box and many Baldor gearmotors.

**PE350 SERIES DC • SCR RATED
PARALLEL SHAFT • TENV • 1.0 SERVICE FACTOR**

Output RPM	F.L. Torque (Lb.In.)	Input HP	Catalog Number	List Price▲	Type & Frame	Ratio to 1	Arm Volts DC	F.L. Amps DC	Overhung Load Lbs.	DIMENSIONS XL Inches	DIMENSIONS XH Inches
7	330	1/8	M1135106	\$585	P353-34	336	90	0.70	565	11.31	9.31
7	330	1/8	M1135139	585	P353-34	336	180	0.35	565	11.31	9.31
14	341	1/8	M1135107	585	P353-34	180	90	1.00	465	11.31	9.31
14	341	1/8	M1135140	585	P353-34	180	180	0.50	465	11.31	9.31
21	371	1/4	M1135117	612	P353-34	124	90	1.10	413	13.31	11.31
21	371	1/4	M1135141	612	P353-34	124	180	0.55	413	13.31	11.31
27	305	1/4	M1135115	612	P353-34	91	90	1.50	374	13.31	11.31
27	305	1/4	M1135142	612	P353-34	91	180	0.75	374	13.31	11.31
42	280	1/4	M1135108	612	P353-34	58	90	2.30	327	13.31	11.31
42	280	1/4	M1135143	612	P353-34	58	180	1.20	327	13.31	11.31
50	250	1/4	M1135109	612	P353-34	50	90	2.30	315	13.31	11.31
50	250	1/4	M1135144	612	P353-34	50	180	1.20	315	13.31	11.31
62	220	1/4	M1135110	612	P353-34	43	90	2.30	303	13.31	11.31
62	220	1/4	M1135145	612	P353-34	43	180	1.20	303	13.31	11.31
83	155	1/4	M1135114	578	P352-34	29	90	2.30	267	13.31	11.31
83	155	1/4	M1135146	578	P352-34	29	180	1.20	267	13.31	11.31
125	100	1/4	M1135111	578	P352-34	23	90	2.00	256	13.31	11.31
125	100	1/4	M1135147	578	P352-34	23	180	1.00	256	13.31	11.31
165	70	1/4	M1135112	578	P352-34	15	90	2.00	232	13.31	11.31
165	70	1/4	M1135148	578	P352-34	15	180	1.00	232	13.31	11.31
250	45	1/4	M1135116	578	P352-34	10	90	2.00	201	13.31	11.31
250	45	1/4	M1135149	578	P352-34	10	180	1.00	201	13.31	11.31
500	25	1/4	M1135113	578	P352-34	5	90	2.00	194	13.31	11.31
500	25	1/4	M1135150	578	P352-34	5	180	1.00	194	13.31	11.31

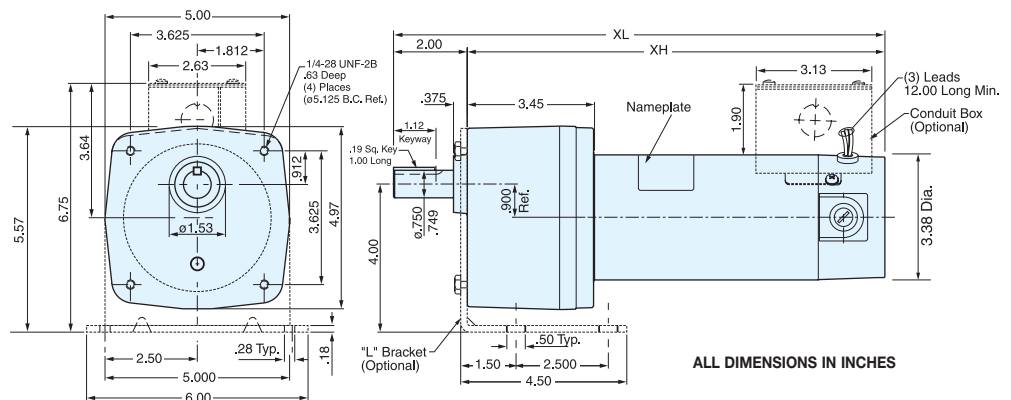
▲ Use "S" discount symbol for all gearmotors.

**PE350 SERIES DC • LOW VOLTAGE (12V)
PARALLEL SHAFT • TENV • 1.0 SERVICE FACTOR**

Output RPM	F.L. Torque (Lb.In.)	Input HP	Catalog Number	List Price▲	Type & Frame	Ratio to 1	Arm Volts DC	F.L. Amps DC	Overhung Load Lbs.	DIMENSIONS XL Inches	DIMENSIONS XH Inches
14	341	1/8	M1135243	\$597	P353-34	180	12	8.7	465	11.05	9.05
42	325	1/4	M1135244	625	P353-34	58	12	21.0	327	13.31	11.31
62	220	1/4	M1135245	625	P353-34	43	12	21.0	303	13.31	11.31
83	155	1/4	M1135246	593	P352-34	29	12	21.0	267	13.31	11.31

▲ Use "S" discount symbol for all gearmotors.

**BODINE
DIRECT
INTERCHANGE**





SUB-FHP DC GEARMOTORS

PARALLEL SHAFT GEARMOTORS

SCR RATED:
105-1112 In-Lbs Torque
LOW VOLTAGE:
320-1087 In-Lbs Torque

Electrical Specifications:

SCR Rated Gearmotors

SCR rated, permanent magnet DC gearmotors. Totally enclosed for continuous duty, general purpose applications. All have constant torque throughout the 60:1 speed range, when powered by a full-wave, unfiltered SCR-type adjustable speed control having a typical form factor of 1.3 to 1.4.



Low Voltage Gearmotors

Totally enclosed, permanent magnet DC gearmotors, performance matched for continuous duty. Motors are designed for battery power or can be used with a low voltage controller with form factor up to 1.05.

Mechanical Specifications:

Gearbox has rugged aluminum die cast housing, for maximum gear and bearing support. Precision machined gearing, hardened for maximum load capability. All gearing designed and rated to AGMA Class 9 standards and to withstand momentary shock overload of 200%. Oversized output bearings for greater overhung load capacity and longer life. High-carbon alloy output shaft provides maximum strength and rigidity. All needle bearing journals are precision-ground after heat treating, to provide maximum finish and fit. Heavy-duty industrial oil seals help keep lubricant in and dirt out. Gears and bearings are splash lubricated with permanent, heavy-duty gear oil. **Conduit box is included as standard.**

Application Notes:

These gearmotors are designed for mounting at any angle, but shaft-up with motor below gearhead is not recommended. Overhung load capacities shown are at center of output shaft. P1100 DC gearmotors have the same mounting dimensions as Bison 483 gearmotors and many Dayton gearmotors. The motor's stall torque exceeds recommended full load torques. A current limiting device such as an SCR control should be used to prevent damage. For additional information, see Bulletin 1830.

P1100 SERIES DC • SCR RATED

FRACTIONAL HP • PARALLEL SHAFT • TOTALLY ENCLOSED

1.0 SERVICE FACTOR

Output RPM	F.L. Torque (Lb.in.)	Input HP	Catalog Number	List Price▲	Type & Frame	Ratio to 1	Arm Volts DC	F.L. Amps DC	Overhung Load (Lbs.)	DIMENSIONS XL XH Inches	
8	1087	¼	108700	\$996	P1103-48	212	90	2.7	700	14.24	12.74
12	1030	¼	108701	996	P1103-48	143	90	2.7	700	14.24	12.74
18	750	¼	108702	996	P1103-48	95	90	2.7	700	14.24	12.74
42	353	¼	108703	972	P1102-48	42	90	2.7	650	14.24	12.74
60	238	¼	108704	972	P1102-48	29	90	2.7	625	14.24	12.74
92	160	¼	108705	972	P1102-48	19	90	2.7	575	14.24	12.74
135	105	¼	108706	972	P1102-48	13	90	2.7	525	14.24	12.74
18	1112	½	108707**	1078	P1103-48	95	90	5.0	700	16.49	14.99
33	822	½	108708**	1078	P1103-48	53	90	5.0	650	16.49	14.99
42	705	½	108709**	1056	P1102-48	42	90	5.0	650	16.49	14.99
60	476	½	108710**	1056	P1102-48	29	90	5.0	625	16.49	14.99
92	320	½	108711**	1056	P1102-48	19	90	5.0	575	16.49	14.99
135	210	½	108712**	1056	P1102-48	13	90	5.0	525	16.49	14.99

▲ Use "S" discount symbol.
** TEFC enclosure.

P1100 SERIES DC • LOW VOLTAGE (12V)

FRACTIONAL HP • PARALLEL SHAFT • TOTALLY ENCLOSED

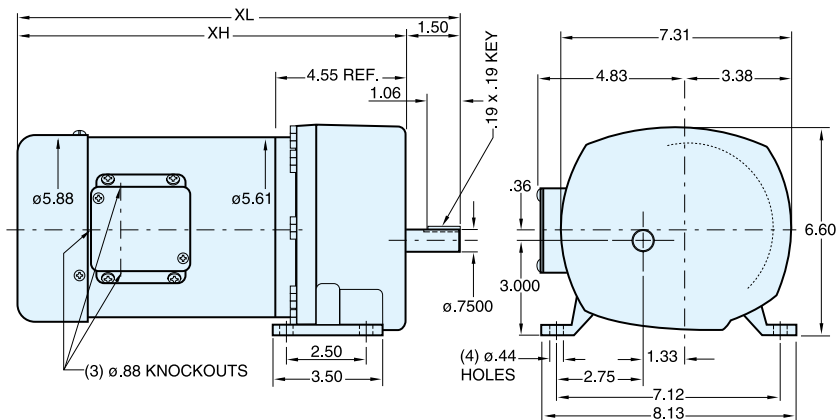
1.0 SERVICE FACTOR

Output RPM	F.L. Torque (Lb.in.)	Input HP	Catalog Number	List Price▲	Type & Frame	Ratio to 1	Arm Volts DC	F.L. Amps DC	Overhung Load (Lbs.)	DIMENSIONS XL XH Inches	
8	1087	¼	108729	\$1017	P1103-48	212	12	21.0	700	13.74	12.24
60	238	¼	108730	995	P1102-48	29	12	21.0	625	13.74	12.24
42	705	½	108731**	1078	P1102-48	42	12	40.0	650	15.99	14.49
92	320	½	108732**	1078	P1102-48	19	12	40.0	575	15.99	14.49

▲ Use "S" discount symbol.
** TEFC enclosure.

BISON/DAYTON
DIRECT INTERCHANGE

P1100 SERIES - DC



ALL DIMENSIONS IN INCHES



SCR RATED: 5-135 In-Lbs Torque

LOW VOLTAGE: 25-135 In-Lbs Torque

Electrical Specifications:

SCR Rated Gearmotors

Totally enclosed right-angle gearmotors, performance matched for continuous service over a 60:1 speed range. All have constant torque throughout the range when powered by a full-wave, unfiltered SCR-type 115 volt input adjustable speed control having a typical form factor of 1.3 to 1.4. Also available as factory options are motors for low voltage input and with double output shafts.



Low Voltage Gearmotors

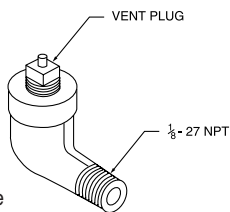
Totally enclosed, permanent magnet DC gearmotors, performance matched for continuous duty. Motors are designed for battery power or can be used with a low voltage controller with form factor up to 1.05.

Mechanical Specifications:

This worm-type right-angle gearing features hardened, steel worm with bronze worm wheel for long life and quiet operation. Precision machined aluminum housings are used. Gearbox has all ball bearings. The housing is sealed and lubrication is permanent with an oil bath. The output shaft is field interchangeable from left hand style to right hand style by reassembly.

Application Notes:

For optimum seal life, these right-angle gearmotors have a lubrication breather positioned for horizontal mounting. For other mountings, the breather-plug must be reoriented by using a 90¹/₈" NPT taper pipe elbow (see drawing). Elbow not available from LEESON. Vent plug is available (Part #M1900177_01). However, the motor portion of the gearmotor should never be mounted below the gearhead.



Overhung load capacities shown are at center of output shaft. **Conduit box not supplied with motor.** See page 103 for optional conduit box and optional base kit.

See page 163 for cross reference data between LEESON and other gearmotors.

For additional information on LEESON gearmotors, see Bulletin 1830.

BODINE/DAYTON DIRECT INTERCHANGE

RIGHT-ANGLE DC • SCR RATED TENV • 1.0 SERVICE FACTOR

Output RPM	F.L. Torque (In.-Lbs.)	Input HP	Catalog Number	List Price▲	Gearmotor Type & Frame	Ratio to 1	Arm Volts DC	Full Load Amps. DC	Over-hung Load (Lbs.)	DIMENSIONS				
										P	PB	X Inches	XL	XH
42	22	1/17	M1115018	\$453	10F60-25D	60	90	1.00	185	2.50	3.00	3.60	8.79	5.19
62	19	1/17	M1115019	453	10F40-25D	40	90	1.00	185	2.50	3.00	3.60	8.79	5.19
125	16	1/17	M1115020	453	10F20-25D	20	90	1.00	185	2.50	3.00	3.60	8.79	5.19
250	10	1/17	M1115021	453	10F10-25D	10	90	1.00	185	2.50	3.00	3.60	8.79	5.19
500	5	1/17	M1115022	453	10F05-25D	5	90	1.00	185	2.50	3.00	3.60	8.79	5.19
42	30	1/12	M1135053	453	13F60-34A	60	180	0.53	235	3.38	4.00	4.50	9.64	5.14
62	35	1/12	M1135054	453	13F40-34A	40	180	0.53	235	3.38	4.00	4.50	9.64	5.14
125	18	1/12	M1135055	453	13F20-34A	20	180	0.53	235	3.38	4.00	4.50	9.64	5.14
250	10	1/12	M1135056	453	13F10-34A	10	180	0.53	235	3.38	4.00	4.50	9.64	5.14
500	5	1/12	M1135057	453	13F05-34A	5	180	0.53	235	3.38	4.00	4.50	9.64	5.14
42	80	1/8	M1135069	522	13F60-34C	60	90	1.40	235	3.38	4.00	4.50	10.64	6.14
62	70	1/8	M1135038	522	13F40-34C	40	90	1.40	235	3.38	4.00	4.50	10.64	6.14
62	70	1/8	M1135058	522	13F40-34C	40	180	0.70	235	3.38	4.00	4.50	10.64	6.14
125	45	1/8	M1135039	522	13F20-34C	20	90	1.40	235	3.38	4.00	4.50	10.64	6.14
125	45	1/8	M1135059	522	13F20-34C	20	180	0.70	235	3.38	4.00	4.50	10.64	6.14
250	25	1/8	M1135040	522	13F10-34C	10	90	1.40	235	3.38	4.00	4.50	10.64	6.14
250	25	1/8	M1135060	522	13F10-34C	10	180	0.70	235	3.38	4.00	4.50	10.64	6.14
500	13	1/8	M1135041	522	13F05-34C	5	90	1.40	235	3.38	4.00	4.50	10.64	6.14
500	13	1/8	M1135061	522	13F05-34C	5	180	0.70	235	3.38	4.00	4.50	10.64	6.14
62	135	1/4	M1135042	562	13F40-34G	40	90	2.30	235	3.38	4.00	4.50	12.64	8.14
62	135	1/4	M1135062	562	13F40-34G	40	180	1.30	235	3.38	4.00	4.50	12.64	8.14
83	125	1/4	M1135043	562	13F30-34G	30	90	2.30	235	3.38	4.00	4.50	12.64	8.14
83	125	1/4	M1135063	562	13F30-34G	30	180	1.30	235	3.38	4.00	4.50	12.64	8.14
125	90	1/4	M1135044	562	13F20-34G	20	90	2.30	235	3.38	4.00	4.50	12.64	8.14
125	90	1/4	M1135064	562	13F20-34G	20	180	1.30	235	3.38	4.00	4.50	12.64	8.14
250	50	1/4	M1135045	562	13F10-34G	10	90	2.30	235	3.38	4.00	4.50	12.64	8.14
250	50	1/4	M1135065	562	13F10-34G	10	180	1.30	235	3.38	4.00	4.50	12.64	8.14
500	30	1/4	M1135046	562	13F05-34G	5	90	2.30	235	3.38	4.00	4.50	12.64	8.14
500	30	1/4	M1135066	562	13F05-34G	5	180	1.30	235	3.38	4.00	4.50	12.64	8.14

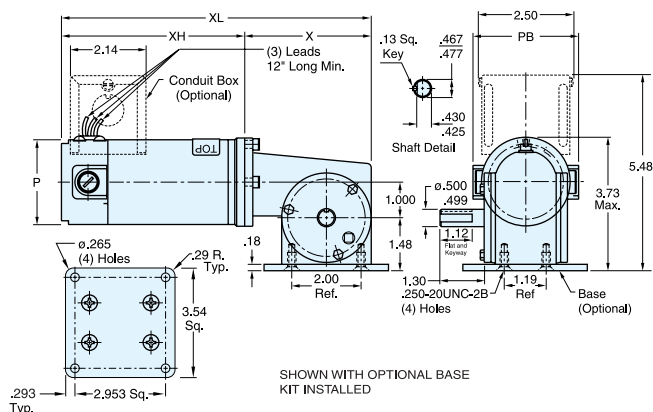
▲ Use "S" discount symbol.

RIGHT-ANGLE DC • LOW VOLTAGE (12V) TENV • 1.0 SERVICE FACTOR

Output RPM	F.L. Torque (In.-Lbs.)	Input HP	Catalog Number	List Price▲	Gearmotor Type & Frame	Ratio to 1	Arm Volts DC	Full Load Amps. DC	Over-hung Load (Lbs.)	DIMENSIONS				
										P	PB	X Inches	XL	XH
42	80	1/8	M1135249	\$532	13F60-34	60	12	11.0	235	3.38	4.21	4.50	10.39	5.89
250	25	1/8	M1135250	532	13F10-34	10	12	11.0	235	3.38	4.21	4.50	10.39	5.89
62	135	1/4	M1135251	570	13F40-34	40	12	21.0	235	3.38	4.21	4.50	12.64	8.14
125	90	1/4	M1135252	570	13F20-34	20	12	21.0	235	3.38	4.21	4.50	12.64	8.14

▲ Use "S" discount symbol.

10 SERIES - DC



13 SERIES - DC

