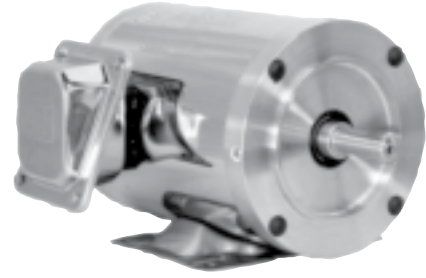




# STAINLESS STEEL MOTORS – SHARK™

## THREE PHASE

For food processing, pharmaceutical and other environments requiring extreme cleanliness and frequent washdowns, WEG offers a new design all-stainless steel motor, called the SHARK™. It's well-known that nothing stands up to a wet or corrosive environment as well as stainless steel. That's why it's considered the most desirable material for washdown duty motor frames and other exterior motor surfaces. And the entire line is certified Inverter Rated for use with a VFD. This rating meets or exceeds MG1 Part 31 NEMA Specifications. The Shark series of Stainless Steel products also includes our new Stainless Steel CFW-09 Drive Control.



FRACTIONAL HP

GENERAL PURPOSE

NEMA PREMIUM EFFICIENCY

CRUSHER® DUTY

IEC TRU-METRIC™

PUMP MOTORS

DEFINITE PURPOSE

ADD-ON™ MODIFICATIONS

MOTOR TECHNICAL DATA

DRIVES & SOFT STARTERS

CONTROLS

## APPLICATIONS STANDARD FEATURES

- Washdown application
- Food processing
- Chemical processing
- Pharmaceuticals
- Poultry processing
- Meat processing
- Dairy applications
- Bakeries
- Snack foods
- Bottling
- Corrosive environment

- High Quality 304 seamless stainless tube frame
- Premium quality 6200 series bearings
- Inverter duty wire
- VPI with Epoxy encapsulated windings
- High Efficiency design
- Class 'F' insulation materials
- 1.15 Service Factor
- Class 'B' rise at 1.15 Service Factor
- Thermostats on each phase-auto reset
- Nameplate data laser etched on body of motor
- Double lip seals
- American threads and bolts stainless hardware
- Inverter Duty

- 4 drain plugs in cast stainless endbells
- Drains in both ends
- Bearing retainers
- Conduit box and cover made of cast 304 stainless steel
- Cast 304 stainless steel endbell at both ends
- Threaded conduit entry for watertight connection
- TIG welded brackets + feet
- Rated MG1 Part 31 for use with VFD
- T-Drain plug included



### RIGID BASE – C-FACE WITH FEET – THREE-PHASE

HP	RPM	NEMA Frame	Catalog Number	Price List	Mult. Sym.	App. Shpg. Wt. (Lb)	FL Amps 460V	FL Eff. %	"C" Dimensions (in.)	Voltage	Notes
0.3	1800	56C	.3318EP3ESS56C	550	S1	41	0.60	79.8	11.260	208-230/460V	⊗
	3600	56C	.5036EP3ESS56C	569	S1	42	0.84	78.3	11.260	208-230/460V	⊗
0.5	1800	56C	.5018EP3ESS56C	575	S1	48	0.87	81.2	11.260	208-230/460V	⊗
	1200	56C	.5012EP3ESS56C	682	S1	63	0.91	79.1	11.260	208-230/460V	⊗
0.75	3600	56C	.7536EP3ESS56C	590	S1	47	1.17	81.9	11.260	208-230/460V	⊗
	1800	56C	.7518EP3ESS56C	616	S1	53	1.25	81.3	11.260	208-230/460V	⊗
1	1200	56C	.7512EP3ESS56C	723	S1	68	1.29	82.9	11.260	208-230/460V	⊗
	3600	56C	00136EP3ESS56C	649	S1	58	1.48	83.3	11.260	208-230/460V	
	1800	56C	00118EP3ESS56C	669	S1	60	1.58	82.3	11.260	208-230/460V	
	1800	56C	00118NP3ESS56C	669	S1	60	1.50	82.3	12.140	208-230/460V	⊗
	1800	143TC	00118EP3ESS143TC	714	S1	75	1.50	82.5	11.700	208-230/460V	
	1800	143TC	00118NP3ESS143TC	714	S1	75	1.50	82.5	12.200	208-230/460V	⊗

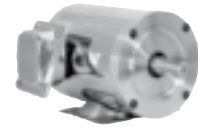
- ELECTRICAL FEATURES ON PAGE B-46.
- MECHANICAL FEATURES ON PAGE B-94.

⊗ = Totally Enclosed Non-Ventilated

# STAINLESS STEEL MOTORS – SHARK™



## SHARK



### RIGID BASE – C-FACE WITH FEET THREE-PHASE

HP	RPM	NEMA Frame	Catalog Number	Price List	Mult. Sym.	App. Shpg. Wt. (Lb)	FL Amps 460V	FL Eff. %	"C" Dimensions (in.)	Voltage	Notes
1.5	3600	56C	00156EP3ESS56C	764	S1	64	2.05	82.3	11.260	208-230/460V	
	3600	143TC	00156EP3ESS143TC	777	S1	72	2.00	82.5	12.200	208-230/460V	
	1800	56C	00158EP3ESS56C	783	S1	65	2.01	82.0	11.670	208-230/460V	
	1800	145TC	00158EP3ESS145TC	790	S1	70	2.20	84.0	12.200	208-230/460V	
2	3600	56C	00236EP3ESS56C	916	S1	73	2.62	83.0	13.230	208-230/460V	
	3600	145TC	00236EP3ESS145TC	1,005	S1	82	2.70	84.0	12.200	208-230/460V	
	1800	56C	00218EP3ESS56C	927	S1	78	2.69	85.0	13.230	208-230/460V	
	1800	145TC	00218EP3ESS145TC	1,016	S1	80	2.80	84.0	13.700	208-230/460V	
3	3600	145TC	00336EP3ESS145TC	1,303	S1	90	3.80	84.0	13.700	208-230/460V	✱
	3600	182TC	00336EP3ESS182TC	1,303	S1	95	3.80	85.5	15.300	208-230/460V	
	1800	182TC	00318EP3ESS182TC	1,307	S1	102	3.90	87.5	15.300	208-230/460V	
5	3600	184TC	00536EP3ESS184TC	1,547	S1	116	6.10	87.5	15.600	208/230/460V	
	1800	184TC	00518EP3ESS184TC	1,397	S1	130	6.50	87.5	16.000	208/230/460V	
7.5	3600	213TC	00736EP3ESS213TC	1,920	S1	175	8.90	88.5	19.000	208/230/460V	
	1800	213TC	00718EP3ESS213TC	1,914	S1	190	9.40	89.5	19.000	208/230/460V	
10	3600	215TC	01036EP3ESS215TC	2,359	S1	202	11.8	89.5	22.500	208/230/460V	
	1800	215TC	01018EP3ESS215TC	2,132	S1	207	12.5	90.2	22.500	208/230/460V	

- ELECTRICAL FEATURES ON PAGE B-46.
- MECHANICAL FEATURES ON PAGE B-94.



### ROUND BODY FOOTLESS – THREE-PHASE

HP	RPM	NEMA Frame	Catalog Number	List Price	Mult. Sym.	Approx. Shipp. Weight Lbs	FL Amps 460V	FL Eff. %	"C" Dimension (in.)	Voltage	Notes
0.3	1800	56C	.3318EP3ESS56CFL	550	S1	40	0.60	79.8	11.260	208-230/460V	⊗
	3600	56C	.5036EP3ESS56CFL	569	S1	42	0.84	78.3	11.260	208-230/460V	⊗
0.5	1800	56C	.5018EP3ESS56CFL	575	S1	47	0.87	81.2	11.260	208-230/460V	⊗
	1200	56C	.5012EP3ESS56CFL	682	S1	63	0.91	79.1	11.260	208-230/460V	⊗
0.75	3600	56C	.7536EP3ESS56CFL	590	S1	47	1.17	81.9	11.260	208-230/460V	⊗
	1800	56C	.7518EP3ESS56CFL	616	S1	52	1.25	81.3	11.260	208-230/460V	⊗
	1200	56C	.7512EP3ESS56CFL	723	S1	64	1.29	82.9	11.260	208-230/460V	⊗
1	3600	56C	00136EP3ESS56CFL	649	S1	58	1.48	83.3	11.260	208-230/460V	
	1800	56C	00118EP3ESS56CFL	669	S1	60	1.58	82.3	11.260	208-230/460V	
	1800	56C	00118NP3ESS56CFL	669	S1	60	1.50	82.3	12.140	208-230/460V	⊗
	1800	143TC	00118EP3ESS143TCFL	714	S1	75	1.50	82.5	11.700	208-230/460V	
	1800	143TC	00118NP3ESS143TCFL	714	S1	75	1.50	82.5	12.200	208-230/460V	⊗
1.5	3600	56C	00156EP3ESS56CFL	764	S1	63	2.05	82.3	11.260	208-230/460V	
	3600	145TC	00156EP3ESS145TCFL	777	S1	72	2.00	82.5	12.200	208-230/460V	
	1800	56C	00158EP3ESS56CFL	783	S1	64	2.01	82.0	11.670	208-230/460V	
	1800	145TC	00158EP3ESS145TCFL	790	S1	62	2.20	84.0	12.200	208-230/460V	
2	3600	56C	00236EP3ESS56CFL	916	S1	78	2.62	83.0	13.230	208-230/460V	
	3600	145TC	00236EP3ESS145TCFL	1,005	S1	82	2.70	84.0	12.200	208-230/460V	
	1800	56C	00218EP3ESS56CFL	927	S1	78	2.69	85.0	13.230	208-230/460V	
	1800	145TC	00218EP3ESS145TCFL	1,016	S1	80	2.80	84.0	13.700	208-230/460V	
3	3600	145TC	00336EP3ESS145TCFL	1,303	S1	90	3.80	84.0	13.700	208-230/460V	✱
	3600	182TC	00336EP3ESS182TCFL	1,303	S1	95	3.80	85.5	15.300	208-230/460V	
	1800	182TC	00318EP3ESS182TCFL	1,307	S1	102	3.90	87.5	15.300	208-230/460V	
5	3600	184TC	00536EP3ESS184TCFL	1,547	S1	115	6.10	87.5	16.000	208-230/460V	
	1800	184TC	00518EP3ESS184TCFL	1,397	S1	130	6.50	87.5	16.000	208-230/460V	
7.5	3600	213TC	00736EP3ESS213TCFL	1,920	S1	175	8.90	88.5	19.000	208-230/460V	
	1800	213TC	00718EP3ESS213TCFL	1,914	S1	190	9.40	89.5	19.000	208-230/460V	
10	3600	215TC	01036EP3ESS215TCFL	2,359	S1	202	11.8	89.5	22.500	208-230/460V	
	1800	215TC	01018EP3ESS215TCFL	2,132	S1	207	12.5	90.2	22.500	208-230/460V	

- ELECTRICAL FEATURES ON PAGE B-46.
  - MECHANICAL FEATURES ON PAGE B-94.
- ⊗ = Total Enclosed Non-Ventilated ✱ = Reduced Frame

FRACTIONAL HP

GENERAL PURPOSE

NEMA PREMIUM EFFICIENCY

CRUSHER® DUTY

IEC TRU-METRIC™

PUMP MOTORS

DEFINITE PURPOSE

ADD-ON™ MODIFICATIONS

MOTOR TECHNICAL DATA

DRIVES & SOFT STARTERS

CONTROLS