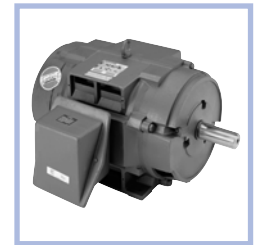


# NEMA Premium® Efficiency, XRI® Three Phase, Drip Proof Rigid Base

**Applications:** General purpose use on compressors, pumps, conveyors, blowers, and other machinery in environments that are relatively clean and dry. Substantial energy savings can be realized when using these high efficiency motors. Guaranteed efficiencies offer an **eXtra Return** on your **I**nvestment when using these premium efficiency motors on high cycle or long run time applications.

**Features:** **Meets or exceeds NEMA Premium® efficiencies**

- Ball bearings
- 1.15 Service Factor
- Class F Insulation
- Nameplated 60/50 hertz
- UL Recognized and CSA Certified
- Three year warranty
- Motors are suitable for 10:1 VT on all frame sizes and 10:1 CT up to 365T frame (Except where noted)



HP	RPM	VOLTS	FRAME	OVER LOAD	CAT. NO.	MODEL NO.	LIST PRICE	MULT. SYMB.	NOM. EFF.	F.L. AMPS	APPROX. WGT. LBS.	"C" DIM.	FOOT NOTES	C FACE KIT
<b>1</b>	3600	208-230/460	56	TSTAT	<b>U244</b>	56T34D6001	<b>\$380</b>	E2	80.0	2.8-3.4/1.4	24	10.18	13	A435
	1800	208-230/460	143T	TSTAT	<b>U758</b> ★	143TTDR6027	<b>\$433</b>	E2	85.5	3.2/1.6	30	12.12		A600
	1200	208-230/460	145T	TSTAT	<b>U265</b>	145TTDR6076	<b>\$504</b>	E2	82.5	3.8-4.4/2.2	41	12.62		A600
<b>1 1/2</b>	3600	208-230/460	143T	TSTAT	<b>U245</b>	143TTDR6028	<b>\$423</b>	E2	84.0	4.4-4.0/2.0	36	12.28		A600
	1800	208-230/460	145T	NONE	<b>E928</b> ★	145TTDR6026	<b>\$313</b>	E2	85.5	4.6-4.2/2.1	45	12.49	d,NP,5,13,20	A436
	1800	208-230/460	145T	TSTAT	<b>U759</b> ★	145TTDR6028	<b>\$452</b>	E2	86.5	4.8-5.6/2.4	35	12.62		A600
	1200	208-230/460	182T	TSTAT	<b>U266</b>	182TTDR6076	<b>\$593</b>	E2	86.5	5.6/2.8	82	14.69		A666
<b>2</b>	3600	208-230/460	145T	TSTAT	<b>U246</b>	145TTDR6039	<b>\$499</b>	E2	85.5	5.2-4.8/2.4	43	13.12		A600
	1800	208-230/460	145T	TSTAT	<b>U760</b> ★	145TTDR6029	<b>\$512</b>	E2	86.5	5.8/2.9	37	13.62		A600
	1200	208-230/460	184T	TSTAT	<b>U267</b>	184TTDR6076	<b>\$604</b>	E2	87.5	7.2/3.6	90	15.19		A666
<b>3</b>	3600	208-230/460	145T	TSTAT	<b>U247</b>	145TTDR6002	<b>\$504</b>	E2	86.5	8.0-7.2/3.6	45	13.12		A600
	1800	208-230/460	182T	TSTAT	<b>E1930</b> ★	182TTDW6030	<b>\$525</b>	E2	89.5	8.4-7.8/3.9	76	14.19		A666
	1200	208-230/460	213T	TSTAT	<b>U268</b>	213TTDC6076	<b>\$739</b>	E2	88.5	10.2-10.0/5.0	156	16.38	DS	A602
<b>5</b>	3600	208-230/460	182T	TSTAT	<b>U248</b>	182TTDR6001	<b>\$553</b>	E2	86.5	13.0-12.0/6.0	86	15.19		A666
	1800	208-230/460	184T	TSTAT	<b>E931</b> ★	184TTDR6031	<b>\$590</b>	E2	89.5	13.6-12.8/6.4	89	15.19	d	A666
	1800	208-230/460	184T	TSTAT	<b>E1931</b> ★	184TTDW6031	<b>\$590</b>	E2	89.5	13.6-12.8/6.4	89	15.19		A666
	1200	208-230/460	215T	TSTAT	<b>U269</b>	215TTDC6076	<b>\$964</b>	E2	90.2	15.8-15.0/7.5	185	16.38	DS	A602
<b>7 1/2</b>	3600	208-230/460	184T	TSTAT	<b>U249</b>	184TTDR6001	<b>\$800</b>	E2	88.5	19.6-17.6/8.8	106	16.19		A666
	1800	208-230/460	213T	TSTAT	<b>U763</b> ★	213TTDC6026	<b>\$764</b>	E2	91.0	20.6-19.8/9.9	160	16.38	DS	A602
	1200	208-230/460	254T	TSTAT	<b>U254</b>	254TTDC6076	<b>\$1,206</b>	E2	92.4	23.4-22.4/11.2	281	20.94	DS,YD	A622
<b>10</b>	3600	208-230/460	213T	TSTAT	<b>U764</b> ★	213TTDC6001	<b>\$872</b>	E2	91.0	25.0-23.6/11.8	150	16.38	d,DS	A602
	1800	208-230/460	215T	TSTAT	<b>U765</b> ★	215TTDC6026	<b>\$902</b>	E2	91.7	28.5-25.6/12.8	220	17.87	DS	A602
	1200	208-230/460	256T	TSTAT	<b>U255</b>	256TTDC6076	<b>\$1,503</b>	E2	91.7	31.0-29.6/14.8	305	22.60	DS,YD	A622
<b>15</b>	3600	208-230/460	215T	TSTAT	<b>U766</b> ★	215TTDC6001	<b>\$1,170</b>	E2	91.0	38.0-34.6/17.3	184	17.87	DS, 2:1	A602
	1800	208-230/460	254T	TSTAT	<b>U767</b> ★	254TTDC6026	<b>\$1,200</b>	E2	93.0	40.5-37.0/18.5	310	20.94	DS,YD	A622
	1200	208-230/460	284T	TSTAT	<b>U256</b>	284TTDC6076	<b>\$1,979</b>	E2	92.4	42.0-39.5/19.7	414	23.54	DS,YD	A626

Blue shaded areas are Cast Iron Frames

★ **Stock Model**

Catalog numbers (Cat No.) highlighted in bold blue have efficiency levels that meet or exceed U.S. EPA and/or NRC Canadian standards.

**Footnotes:**

- d Will become build-up item when current stock is gone
- DS Sourced
- NP Does not meet NEMA Premium® efficiency
- YD 12 Leads for WYE-DELTA, Part Winding Start on low voltage, or across-the-line starting

- 5 56H, 143T, and 145T Combination Base with 12 mounting holes
- 13 F1 Mounting Only, Cannot reassemble to F2
- 20 Rated 60/50 hertz, 190/380 or 380 volt at next lower horsepower
- 2:1 Suitable for 2:1 CT operation

Continued on next page.

**Note:** Rated efficiency is at 230/460 volts.

# NEMA Premium® Efficiency, XRI® Three Phase, Drip-proof

## Rigid Base

HP	RPM	VOLTS	FRAME	OVER LOAD	CAT. NO.	MODEL NO.	LIST PRICE	MULT. SYMB.	NOM. EFF.	F.L. AMPS	APPROX. WGT. LBS.	"C" DIM.	FOOT NOTES	C FACE KIT
<b>20</b>	3600	208-230/460	254T	TSTAT	<b>U768</b>	254TTDC6001	\$1,472	E2	93.0	50.0-46.0/23.0	300	20.94	DS,YD	A622
	1800	208-230/460	256T	TSTAT	<b>U769</b> *	256TTDC6026	\$1,465	E2	93.0	55.0-51.0/25.5	360	22.60	DS,YD	A622
	1200	208-230/460	286T	TSTAT	<b>U257</b>	286TTDC6076	\$2,411	E2	92.4	58.0-55.0/27.5	457	25.00	DS,YD	A626
<b>25</b>	3600	208-230/460	256T	TSTAT	<b>U770</b> *	256TTDC6001	\$1,824	E2	93.0	64.0-57.4/28.7	315	22.60	DS,YD	A622
	1800	208-230/460	284T	TSTAT	<b>U771</b> *	284TTDC6026	\$1,824	E2	93.6	66.0-59.6/29.8	424	23.54	DS,YD	A626
	1200	208-230/460	324T	TSTAT	<b>U798</b>	324TTDC6076	\$2,872	E2	93.0	72.0-67.0/33.5	695	26.02	DS,YD	A627
<b>30</b>	3600	208-230/460	284TS	TSTAT	<b>U772</b>	284TSTDC6001	\$2,119	E2	94.1	75.0-67.0/33.5	396	22.17	DS,YD	N/A
	1800	208-230/460	286T	TSTAT	<b>U773</b> *	286TTDC6026	\$1,979	E2	94.1	78.0-71.0/35.5	483	25.00	DS,YD	A626
	1200	208-230/460	326T	TSTAT	<b>U799</b>	326TTDC6076	\$2,995	E2	93.6	86.3-78.0/39.0	760	27.52	DS,YD	A627
<b>40</b>	3600	208-230/460	286TS	TSTAT	<b>U774</b>	286TSTDC6001	\$2,791	E2	93.6	100-91.2/45.6	452	23.62	DS,YD,2:1	N/A
	1800	208-230/460	324T	TSTAT	<b>U775</b> *	324TTDC6026	\$2,609	E2	94.1	104-96.0/48.0	581	26.02	DS,YD	A627
	1200	208-230/460	364T	TSTAT	<b>U1927</b>	364TTDCA6086	\$4,269	E2	94.1	107-100/50.0	875	31.60	DS,YD	N/A
<b>50</b>	3600	208-230/460	324TS	TSTAT	<b>U776</b>	324TSTDC6001	\$3,403	E2	94.1	123-112/56.0	548	24.53	DS,YD	N/A
	1800	208-230/460	326T	TSTAT	<b>U777</b> *	326TTDC6026	\$3,152	E2	94.5	129-118/59.0	710	27.52	DS,YD	A627
	1200	208-230/460	365T	TSTAT	<b>U1928</b>	365TTDCA6086	\$4,885	E2	94.1	134-125/62.5	930	32.80	DS,YD	N/A
<b>60</b>	3600	208-230/460	326TS	TSTAT	<b>U778</b> *	326TSTDC6001	\$4,071	E2	94.1	148-136/68.0	590	26.02	DS,YD	N/A
	1800	208-230/460	364T	TSTAT	<b>U779</b>	364TTDC6060	\$3,468	E2	94.1	152-139/69.5	716	28.01	DS,NP,YD	A628
	1800	208-230/460	364T	TSTAT	<b>U1779</b> *	364TTDCA6060	\$3,468	E2	95.4	151.5-140/70.0	1005	31.60	DS,YD	N/A
	1200	230/460	404T	TSTAT	<b>U270</b>	-----	\$5,858	E2	95.0	146/73.0	975	32.50	DS,YD	A222
<b>75</b>	3600	208-230/460	364TS	TSTAT	<b>U782</b>	364TSTDC6001	\$5,379	E2	94.5	193-176/88.0	850	26.89	DS,YD	N/A
	3600	208-230/460	364TS	TSTAT	<b>U1782</b> *	364TSTDCA6001	\$5,379	E2	93.6	190-170/85.0	937	29.50	DS,YD	N/A
	1800	208-230/460	365T	TSTAT	<b>U783</b>	365TTDC6060	\$4,278	E2	94.5	189-174/87.0	856	31.18	DS,NP,YD	A628
	1800	208-230/460	365T	TSTAT	<b>U1783</b> *	365TTDCA6060	\$4,278	E2	95.4	189-174/87.0	1030	32.80	DS,YD	N/A
	1200	230/460	405T	TSTAT	<b>U271</b>	-----	\$6,975	E2	95.0	180/90.0	1100	34.00	DS,YD	A222
<b>100</b>	3600	208-230/460	365TS	TSTAT	<b>U784</b> *	365TSTDC6001	\$6,081	E2	94.5	258-226/113	790	29.06	d,DS,YD	N/A
	3600	208-230/460	365TS	TSTAT	<b>U1784</b> *	365TSTDCA6001	\$6,081	E2	94.5	251-224/112	1016	30.60	DS,YD	N/A
	1800	230/460	404T	NONE	<b>E922</b> *	404TTDS6060	\$5,852	E2	95.4	226/113	1025	32.50	YD	A222
	1200	230/460	444T	TSTAT	<b>U272</b>	444TTDS16077	\$6,833	E2	95.4	234/117	1300	37.75	YD	A228
<b>125</b>	3600	460	404TS	NONE	<b>U250</b> *	404TSTDS6001	\$7,575	E2	95.0	140	973	29.50	YD	A225
	1800	460	405T	NONE	<b>E923</b> *	405TTDS6060	\$7,408	E2	95.4	141	1150	34.00	YD	A222
	1200	460	445T	TSTAT	<b>U273</b>	-----	\$10,848	E2	95.0	145	1500	39.75	YD	A228
<b>150</b>	3600	460	405TS	NONE	<b>U251</b> *	405TSTDS6007	\$9,215	E2	95.0	165	1075	31.00	YD	A225
	1800	460	444T	NONE	<b>E924</b> *	444TTDS6060	\$8,748	E2	95.8	170	1275	37.75	YD	A228
	1200	460	447T	TSTAT	<b>U274</b>	-----	\$12,025	E2	95.4	185	2050	43.25	YD	N/A
<b>200</b>	3600	460	444TS	TSTAT	<b>U252</b> *	444TSTDS16003	\$14,334	E2	95.8	216	1277	39.50	YD	A231
	1800	460	445T	NONE	<b>E925</b> *	445TTDS6060	\$10,087	E2	95.8	225	1500	39.75	YD	A228
	1200	460	447T	TSTAT	<b>U275</b>	-----	\$14,715	E2	95.4	245	2200	43.25	YD	N/A
<b>250</b>	3600	460	447TS	NONE	<b>U785</b> *	447TSTDN16004	\$16,694	E2	95.8	274	1438	39.50	YD	A293
	1800	460	445T	NONE	<b>E926</b>	445TTDS6061	\$13,375	E2	95.4	285	1500	39.75	NP,YD	A228
	1800	460	447T	NONE	<b>U786</b>	-----	\$11,956	E2	96.2	292	1438	39.50	YD	N/A
	1200	460	449T	NONE	<b>U787</b>	-----	\$18,456	E2	95.4	308	1745	43.25	YD	N/A
<b>300</b>	3600	460	447TS	NONE	<b>U788</b> *	447TSTDN16007	\$19,475	E2	95.4	336	1745	39.50	YD	A293
	1800	460	447T	NONE	<b>U789</b>	447TTDN16041	\$16,013	E2	96.2	340	1745	43.25	YD	N/A
	1200	460	449T	NONE	<b>U790</b>	-----	\$23,071	E2	95.8	365	2112	43.25	YD	N/A
<b>350</b>	3600	460	447TS	NONE	<b>U791</b> *	447TSTDN16008	\$21,422	E2	95.4	385	1745	39.50	YD	A293
	1800	460	447T	NONE	<b>U792</b>	-----	\$19,542	E2	95.8	405	1745	39.50	YD	N/A
<b>400</b>	3600	460	449TS	NONE	<b>U793</b> *	449TSTDN16003	\$24,762	E2	95.8	445	2112	39.50	YD	A293
	1800	460	447T	NONE	<b>U794</b>	-----	\$23,442	E2	95.8	460	2112	39.50	YD	N/A

Blue shaded areas are Cast Iron Frames

\* **Stock Model**

Catalog numbers (Cat No.) highlighted in bold blue have efficiency levels that meet or exceed U.S. EPCa and/or NRCa Canadian standards.

### Footnotes:

- d Will become build-up item when current stock is gone
- DS Sourced
- NP Does not meet NEMA Premium® efficiency
- YD 12 Leads for WYE-DELTA, Part Winding Start on low voltage, or across-the-line starting
- 2:1 Suitable for 2:1 CT operation

Continued on next page.

# NEMA Premium® Efficiency, XRI® Three Phase, DripProof Rigid Base

HP	RPM	VOLTS	FRAME	OVER LOAD	CAT. NO.	MODEL NO.	LIST PRICE	MULT. SYMB.	NOM. EFF.	F.L. AMPS	APPROX. WGT. LBS.	"C" DIM.	FOOT NOTES	C FACE KIT
<b>450</b>	3600	460	449TS	NONE	<b>U795</b> ★	449TSTDN16004	<b>\$31,299</b>	E2	95.8	495	2112		YD	A293
	1800	460	449T	NONE	<b>U796</b>	-----	<b>\$30,536</b>	E2	96.2	518	2112		YD	N/A
<b>500</b>	3600	460	449TS	NONE	<b>U797</b> ★	449TSTDN16005	<b>\$37,869</b>	E2	95.8	545	2147		YD	A293
	1800	460	449TS	NONE	<b>U261</b>	-----	<b>\$37,112</b>	E2	96.2	572	3350	48.25		N/A
<b>600</b>	3600	460	508US	NONE	U263	-----	<b>\$43,878</b>	E2	95.8	662	3450	48.50	NE	N/A
<b>650</b>	3600	460	508US	NONE	U264	-----	<b>\$45,853</b>	E2	95.8	715	3500	48.50	NE	N/A

Blue shaded areas are Cast Iron Frames

★ **Stock Model**

Catalog numbers (Cat No.) highlighted in bold blue have efficiency levels that meet or exceed U.S. EPAAct and/or NRCan Canadian standards.

**Footnotes:**

- NE Exempt from NEMA Premium efficiency requirement
- YD 12 Leads for WYE-DELTA, Part Winding Start on low voltage, or across-the-line starting

# NEMA Premium® Efficiency, XRI® Three Phase, Totally Enclosed

## C-Face with Rigid Base Inverter Duty



**Applications:** General purpose use on gear reducers, pumps, machine tools, and other direct-coupled equipment installed in damp, dusty, or dirty environments, where long life and ultra-high efficiency are desired. Guaranteed efficiencies offer an **eXtra Return** on your investment when using these premium efficiency motors on high cycle or long run applications.

- Features:**
- **Meets or exceeds NEMA Premium® efficiencies**
  - 10:1 Variable torque and 10:1 Constant Torque
  - Class F insulation system
  - CR<sup>200</sup> Corona Resistant, 200 C rated magnet wire
  - 1.15 Service Factor on sinewave, 1.0 Service Factor on IGBT power
  - Rolled steel construction
  - Top mounted conduit box (F3)
  - Rated 60/50 hertz at same HP
  - Ball bearings
  - UL Recognized and CSA Certified
  - Three year warranty



HP	RPM	VOLTS	FRAME	CAT. NO.	MODEL NO.	CT SPEED RANGE	LIST PRICE	MULT. SYMB.	NOM. EFF.	FL. AMPS	APPROX. WGT. LBS.	"C" DIM	FOOT NOTES
<b>1</b>	3600	208-230/460	56C	<b>E2000</b> ★	56T34F5940	10:1	<b>\$554</b>	E9	80.0	3.0-2.8/1.4	24	11.31	
	1800	208-230/460	143TC	<b>E2001</b> ★	143TTFR5642	10:1	<b>\$445</b>	E9	85.5	3.2-3.2/1.6	32	13.75	
	1200	208-230/460	145TC	<b>E2002</b> ★	145TTFR6078	10:1	<b>\$536</b>	E9	82.5	3.8-3.8/1.9	42	13.75	
<b>1 1/2</b>	3600	208-230/460	143TC	<b>E2003</b> ★	143TTFR5582	10:1	<b>\$515</b>	E9	84.0	4.4-4.0/2.0	37	13.75	
	1800	208-230/460	145TC	<b>E2004</b> ★	145TTFR6033	10:1	<b>\$485</b>	E9	86.5	5.2-4.8/2.4	34	13.75	
	1200	208-230/460	182TC	<b>E2005</b>	182TTFR6076	10:1	<b>\$701</b>	E9	87.5	4.8-4.4/2.2	82	16.19	
<b>2</b>	3600	208-230/460	145TC	<b>E2006</b>	145TTFR3002	10:1	<b>\$571</b>	E9	85.5	5.2-4.8/2.4	44	13.75	
	1800	208-230/460	145TC	<b>E2007</b> ★	145TTFR6035	10:1	<b>\$531</b>	E9	86.5	6.0-5.8/2.9	50	14.25	
	1200	208-230/460	184TC	<b>E2008</b> ★	184TTFR6076	10:1	<b>\$803</b>	E9	88.5	6.4-6.0/3.0	94	17.19	d
	1200	208-230/460	184TC	<b>E2008</b> ★	184TTFW6076	10:1	<b>\$803</b>	E9	88.5	6.4-6.0/3.0	94	17.19	
<b>3</b>	3600	208-230/460	182TC	<b>E2009</b> ★	182TTFR6001	10:1	<b>\$740</b>	E9	87.5	8.0-7.6/3.8	83	15.69	d
	3600	208-230/460	182TC	<b>E2009</b> ★	182TTFW6001	10:1	<b>\$740</b>	E9	87.5	8.0-7.6/3.8	83	15.69	
	1800	208-230/460	182TC	<b>E2010</b> ★	182TTFR6026	10:1	<b>\$664</b>	E9	89.5	8.4-8.0/4.0	87	16.19	d
	1800	208-230/460	182TC	<b>E2010</b> ★	182TTFW6026	10:1	<b>\$664</b>	E9	89.5	8.4-8.0/4.0	87	16.19	
	1200	208-230/460	213TC	<b>E2011</b> ★	213TTFW6076	10:1	<b>\$979</b>	E9	89.5	9.2-8.8/4.4	115	19.47	d
<b>5</b>	3600	208-230/460	184TC	<b>E2012</b> ★	184TTFR6001	10:1	<b>\$858</b>	E9	88.5	13.2-12.0/6.0	95	16.67	d
	3600	208-230/460	184TC	<b>E2012</b> ★	184TTFW6001	10:1	<b>\$858</b>	E9	88.5	13.2-12.0/6.0	95	16.67	
	1800	208-230/460	184TC	<b>E2013</b> ★	184TTFR6026	10:1	<b>\$775</b>	E9	90.2	13.8-12.4/6.2	110	17.19	d
	1800	208-230/460	184TC	<b>E2013</b> ★	184TTFW6026	10:1	<b>\$775</b>	E9	90.2	13.8-12.4/6.2	110	17.19	
	1200	208-230/460	215TC	<b>E2014</b> ★	215TTFW6076	10:1	<b>\$1,261</b>	E9	90.2	15.0-14.0/7.0	135	20.97	d
<b>7 1/2</b>	3600	208-230/460	213TC	<b>E2015</b> ★	213TTFR6001	10:1	<b>\$1,054</b>	E9	91.7	19.7-17.8/8.9	116	20.97	
	1800	208-230/460	213TC	<b>E2016</b> ★	213TTFW6026	10:1	<b>\$957</b>	E9	91.7	21.0-19.4/9.7	143	20.97	
<b>10</b>	3600	208-230/460	215TC	<b>E2018</b> ★	215TTFR6001	10:1	<b>\$1,122</b>	E9	91.7	26.4-23.6/11.8	137	22.22	
	1800	208-230/460	215TC	<b>E2019</b> ★	215TTFW6026	10:1	<b>\$1,089</b>	E9	91.7	28.0-25.6/12.8	164	22.22	

★ **Stock Model**

Catalog numbers (Cat No.) highlighted in bold blue have efficiency levels that meet or exceed U.S. EPAAct and/or NRCan Canadian standards.

**Footnotes:**

d Will become build-up item when current stock is gone

# NEMA Premium® Efficiency, Blue Chip XRI® Three Phase, Totally Enclosed

Rigid Base

**Applications:** General purpose use on compressors, pumps, conveyors, blowers, and other machinery in dirty and dusty environments. Substantial energy savings can be realized when using these high efficiency motors. Guaranteed efficiencies offer an eXtra Return on your Investment when using these premium efficiency motors on high cycle or long run time applications.

**Features:**



- Meets or exceeds NEMA Premium® efficiencies, except where noted
- Blue Chip® quality, cast iron or rolled steel construction (see shaded area for cast iron)
- Shaft slinger
- Class F insulation
- 1.15 Service Factor
- Motors accept C-face kits
- Ball bearings, except where noted
- UL Recognized and CSA Certified
- Three year warranty

**Available with Nameplate Modification:**

- 1.25 Service Factor through 40 HP
- 50HZ at same HP, 1.0 Service Factor through 40 HP
- 10:1 Variable Torque, 20:1 Constant Torque on VFD at 1.0 Service Factor



HP	RPM	VOLTS	FRAME	CAT. NO.	MODEL NO.	CT SPEED RANGE*	LIST PRICE	MULT. SYMB.	NOM. EFF.	F.L. AMPS	APPROX. WGT. LBS.	"C" DIM.	FOOT NOTES	C FACE KIT
<b>1</b>	3600	230/460	56	<b>E2100</b> *	56T34F15940	10:1	\$525	E9	80.0	2.8/1.4	24	11.31		A665
	1800	230/460	143T	<b>E2101</b> *	143TTFR15642	10:1	\$435	E9	85.5	3.2/1.6	32	13.75		A642
	1800	230/460	143T	<b>E349</b>	143TTTN6026	20:1	\$458	E9	85.5	3.0/1.5	53	10.43	N,20	A603
	1800	575	143T	<b>E300</b> *	143TTTN6030	20:1	\$458	E9	85.5	1.2	55	10.43	d,N	A603
	1200	230/460	145T	<b>E2102</b> *	145TTFR16078	10:1	\$519	E9	82.5	3.8/1.9	42	13.75		A642
	1200	230/460	145T	<b>E350</b>	145TTTN6076	20:1	\$576	E9	80.0	3.4/1.7	56	11.43	N,NP,20	A603
<b>1 1/2</b>	3600	230/460	143T	<b>E2103</b> *	143TTFR15582	10:1	\$505	E9	84.0	4.0/2.0	37	13.75		A642
	3600	230/460	143T	<b>E351</b> *	143TTTN6001	20:1	\$573	E9	86.5	4.0/2.0	54	10.43	d,N	A603
	1800	230/460	145T	<b>E2104</b> *	145TTFR16033	10:1	\$447	E9	86.5	4.8/2.4	34	13.75		A642
	1800	230/460	145T	<b>E352</b> *	145TTTN6026	20:1	\$497	E9	84.0	4.4/2.2	62	11.43	d,N,NP,20	A603
	1200	230/460	182T	<b>E2105</b> *	182TTFW16076	10:1	\$664	E9	87.5	5.6/2.8	89	15.96		A666
	1200	230/460	182T	<b>E231</b>	182TTTS6076	20:1	\$737	E9	87.5	4.4/2.2	79	12.71	N,20	A644
<b>2</b>	3600	230/460	145T	<b>E2106</b> *	145TTFR13002	10:1	\$541	E9	85.5	4.8/2.4	44	13.75		A642
	3600	230/460	145T	<b>E353</b>	145TTTN6001	20:1	\$601	E9	85.5	5.0/2.5	64	11.43	N,20	A603
	1800	230/460	145T	<b>E2107</b> *	145TTFR16035	10:1	\$491	E9	86.5	5.8/2.9	50	14.25		A642
	1800	230/460	145T	<b>E354</b> *	145TTTN6027	20:1	\$546	E9	85.5	6.0/3.0	64	11.43	d,N,NP	A603
	1200	230/460	184T	<b>E2108</b> *	184TTFW16076	10:1	\$785	E9	88.5	7.2/3.6	89	15.97		A666
	1200	230/460	184T	<b>E232</b>	184TTTS6076	20:1	\$911	E9	88.5	6.0/3.0	125	13.71	N,20	A644
<b>3</b>	3600	230/460	182T	<b>E2109</b> *	182TTFW16001	10:1	\$727	E9	86.5	7.6/3.8	66	13.97		A666
	3600	230/460	182T	<b>E216</b>	182TTTS6001	20:1	\$825	E9	89.5	7.6/3.8	94	12.71	N,20	A644
	1800	230/460	182T	<b>E2110</b> *	182TTFW16026	10:1	\$648	E9	89.5	7.8/3.9	80	14.97		A666
	1800	230/460	182T	<b>E201</b>	182TTTS6026	20:1	\$740	E9	90.2	8.0/4.0	102	12.71	N	A644
	1200	230/460	213T	<b>E2111</b> *	213TTFW16076	10:1	\$960	E9	89.5	8.8/4.4	115	19.47		A609
	1200	230/460	213T	<b>E233</b>	213TTFS6076	20:1	\$1,122	E9	89.5	8.8/4.4	173	18.20		A206
<b>5</b>	3600	230/460	184T	<b>E2112</b> *	184TTFW16001	10:1	\$825	E9	88.5	12.0/6.0	96	16.47		A666
	3600	230/460	184T	<b>E217</b>	184TTFS6001	2:1	\$917	E9	89.5	11.8/5.9	109	15.81		A644
	1800	230/460	184T	<b>E2113</b> *	184TTFW16026	10:1	\$758	E9	89.5	12.8/6.4	94	15.97		A666
	1800	230/460	184T	<b>E202</b> *	184TTFS6026	20:1	\$858	E9	90.2	12.4/6.2	117	15.81	d	A644
	1800	575	184T	<b>E304</b>	184TTFS6030	20:1	\$858	E9	90.2	5.0	125	15.81		A644
	1200	230/460	215T	<b>E2114</b> *	215TTFW16076	10:1	\$1,240	E9	90.2	14.0/7.0	135	20.97		A609
1200	230/460	215T	<b>E234</b>	215TTFS6076	20:1	\$1,378	E9	89.5	13.8/6.9	203	19.70		A206	
<b>7 1/2</b>	3600	230/460	213T	<b>E2115</b> *	213TTFW16001	10:1	\$997	E9	91.7	17.8/8.9	116	20.97		A609
	3600	230/460	213T	<b>E218</b> *	213TTTS6001	2:1	\$1,108	E9	90.2	17.8/8.9	185	15.69	N	A206
	1800	230/460	213T	<b>E2116</b> *	213TTFW16026	10:1	\$935	E9	91.7	21.6/10.8	144	18.70		A667
	1800	230/460	213T	<b>E203</b>	213TTFS6026	20:1	\$1,051	E9	91.7	19.2/9.6	194	18.20		A206
	1800	575	213T	<b>E305</b> *	213TTFS6030	20:1	\$1,051	E9	91.7	7.7	192	19.70	d	A206
	1200	230/460	254T	<b>E235</b> *	254TTFNA6076	20:1	\$1,751	E9	91.0	19.8/9.9	223	23.52		A284
<b>10</b>	3600	230/460	215T	<b>E2118</b> *	215TTFW16001	10:1	\$1,100	E9	91.7	23.6/11.8	137	22.22		A609
	3600	230/460	215T	<b>E219</b>	215TTFS6001	20:1	\$1,293	E9	91.7	23.6/11.8	217	19.70		A206
	1800	230/460	215T	<b>E2119</b> *	215TTFW16026	10:1	\$1,065	E9	91.7	26.8/13.4	161	19.70		A667
	1800	230/460	215T	<b>E204</b>	215TTFS6026	20:1	\$1,266	E9	91.7	25.0/12.5	213	19.70		A206
	1200	230/460	256T	<b>E236</b> *	256TTFNA6076	20:1	\$2,139	E9	91.0	26.2/13.1	368	25.27		A284

Blue shaded areas are Cast Iron Frames      \* Stock Model      \* Requires nameplate modifications      Catalog numbers (Cat No.) highlighted in bold blue have efficiency levels that meet or exceed U.S. EPA and/or NRC Canadian standards.

Continued on next page.

**Footnotes:**

d Will become build-up item when current stock is gone  
N Totally Enclosed, Non-Ventilated

NP Does not meet NEMA Premium efficiency  
20 Rated 60/50 hertz, 190/380 or 380 volt at next lower horsepower

# NEMA Premium® Efficiency, Blue Chip XRI® Three Phase, Totally Enclosed

## Rigid Base

HP	RPM	VOLTS	FRAME	CAT. NO.	MODEL NO.	CT SPEED RANGE *	LIST PRICE	MULT. SYMB.	NOM. EFF.	F.L. AMPS	APPROX. WGT. LBS.	"C" DIM.	FOOT NOTES	C FACE KIT
<b>15</b>	3600	230/460	254T	<b>E220</b> ★	254TTFNA6001	2:1	\$1,698	E9	91.7	35.0/17.5	350	23.52		A284
	1800	230/460	254T	<b>E205</b> ★	254TTFNA6026	20:1	\$1,594	E9	92.4	37.6/18.8	350	23.52		A284
	1800	575	254T	<b>E307</b> ★	254TTFNA6030	20:1	\$1,594	E9	92.4	15.1	350	23.52		A284
	1200	230/460	284T	<b>E237</b> ★	284TTFNA6076	20:1	\$2,839	E9	91.7	40.8/20.4	475	26.34		A618
<b>20</b>	3600	230/460	256T	<b>E221</b> ★	256TTFNA6001	2:1	\$2,104	E9	92.4	46.8/23.4	375	25.27		A284
	1800	230/460	256T	<b>E206</b> ★	256TTFNA6026	20:1	\$1,986	E9	93.0	48.2/24.1	425	25.27		A284
	1800	575	256T	<b>E308</b>	256TTFNA6030	20:1	\$1,986	E9	93.0	19.3	425	25.27		A284
	1200	230/460	286T	<b>E238</b> ★	286TTFNA6076	20:1	\$3,459	E9	91.7	53.6/26.8	550	27.84		A618
<b>25</b>	3600	230/460	284TS	<b>E222</b> ★	284TSTFNA6001	2:1	\$2,592	E9	93.6	56.2/28.1	475	24.97		A618
	1800	230/460	284T	<b>E207</b> ★	284TTFNA6026	20:1	\$2,365	E9	93.6	62.0/31.0	500	26.34		A618
	1800	575	284T	<b>E309</b>	284TTFNA6030	20:1	\$2,365	E9	93.6	24.8	500	26.34		A618
	1200	230/460	324T	<b>E239</b> ★	324TTFS6076	20:1	\$4,193	E9	93.0	65.0/32.5	675	28.87		A214
<b>30</b>	3600	230/460	286TS	<b>E223</b> ★	286TSTFNA6001	2:1	\$3,027	E9	93.6	67.6/33.8	500	26.47		A618
	1800	230/460	286T	<b>E208</b> ★	286TTFNA6026	20:1	\$2,750	E9	94.1	73.0/36.5	525	27.84		A618
	1800	575	286T	<b>E310</b> ★	286TTFNA6030	20:1	\$2,750	E9	94.1	29.2	525	27.84		A618
	1200	230/460	326T	<b>E240</b> ★	326TTFS6076	20:1	\$4,829	E9	93.0	77.0/38.5	725	30.37		A214
<b>40</b>	3600	230/460	324TS	<b>E224</b> ★	324TSTFS6001	2:1	\$3,992	E9	93.6	94.0/47.0	675	27.37		A214
	1800	230/460	324T	<b>E209</b> ★	324TTFS6026	20:1	\$3,653	E9	94.1	95.0/47.5	750	30.37		A214
	1800	575	324T	<b>E311</b> ★	324TTFS6030	20:1	\$3,653	E9	94.1	39.0	750	30.37		A214
	1200	230/460	364T	<b>E241</b> ★	364TTFS6086	20:1@	\$6,544	E9	93.6	100/50.0	950	31.50	NP	A395
<b>50</b>	3600	230/460	326TS	<b>E225</b> ★	326TSTFS6001	2:1	\$5,164	E9	93.6	116/58.0	725	28.87		A214
	1800	230/460	326T	<b>E210</b> ★	326TTFS6026	20:1@	\$4,486	E9	94.5	120/60.0	775	31.87		A214
	1800	575	326T	<b>E312</b>	326TTFS6030	20:1@	\$4,486	E9	94.5	48.0	775	31.87		A214
	1200	230/460	365T	<b>E242</b> ★	365TTFS6086	20:1@	\$7,516	E9	93.6	123/61.5	1000	32.50	NP	A395
<b>60</b>	3600	230/460	364TS	<b>E226</b> ★	364TSTFS6001	2:1	\$6,794	E9	94.5	134/67.0	925	29.38		A396
	1800	230/460	364T	<b>E211</b> ★	364TTFS6036	20:1@	\$6,436	E9	95.0	138/69.0	1000	31.50		A395
	1800	575	364T	<b>E313</b> ★	364TTFS6040	20:1@	\$6,436	E9	95.0	55.0	1000	31.50		A395
	1200	230/460	404T	<b>E243</b> ★	404TTFS6086	20:1@	\$8,806	E9	94.5	144/72.0	1200	35.62		A223
<b>75</b>	3600	230/460	365TS	<b>E227</b> ★	365TSTFS6001	2:1	\$8,531	E9	94.5	168/84.0	1025	30.38		A396
	1800	230/460	365T	<b>E212</b> ★	365TTFS6036	20:1@	\$8,159	E9	95.4	172/86.0	1100	32.50		A395
	1800	575	365T	<b>E315</b>	365TTFS6040	20:1@	\$8,159	E9	95.4	69.0	1100	32.50		A395
	1200	230/460	405T	<b>E244</b> ★	405TTFS6086	20:1@	\$10,366	E9	94.5	180/90	1300	37.12		A223
<b>100</b>	3600	230/460	405TS	<b>E228</b> ★	405TSTFS6001	2:1	\$11,431	E9	95.0	216/108	1250	34.12		A226
	1800	230/460	405T	<b>E213</b> ★	405TTFS6036	20:1@	\$10,080	E9	95.4	226/113	1375	37.12		A223
	1800	575	405T	<b>E314</b>	405TTFS6040	20:1@	\$10,080	E9	95.4	90.5	1375	37.12		A223
	1200	230/460	444T	<b>E328</b>	444TTFN6086	20:1@	\$15,286	E9	95.0	248/124	2000	41.25		A620
<b>125</b>	3600	460	444TS	<b>E229</b> ★	444TSTFS6001	2:1	\$14,944	E9	95.4	136	1750	37.50	PW	A226
	1800	460	444T	<b>E214</b> ★	444TTFS6036	20:1@	\$13,270	E9	95.4	141	1850	41.25	PW	A223
	1200	460	445T	<b>E246</b> ★	445TTFN6086	20:1@	\$17,402	E9	95.0	155	2050	43.19		A620

Blue shaded areas are Cast Iron Frames

★ Stock Model

\* Requires nameplate modifications

@ Requires larger fan

Catalog numbers (Cat No.) highlighted in bold blue have efficiency levels that meet or exceed U.S. EPCAct and/or NRCan Canadian standards.

Continued on next page.

### Footnotes:

NP Does not meet NEMA Premium efficiency  
PW Part Winding Start Capability

# NEMA Premium® Efficiency, Blue Chip XRI® Three Phase, Totally Enclosed

Rigid Base

HP	RPM	VOLTS	FRAME	CAT. NO.	MODEL NO.	CT SPEED RANGE *	LIST PRICE	MULT. SYMB.	NOM. EFF.	F.L. AMPS	APPROX. WGT. LBS.	"C" DIM.	FOOT NOTES	C FACE KIT
<b>150</b>	3600	460	445TS	<b>E230</b>	445STFN6001	2:1	<b>\$17,952</b>	E9	95.8	165	2050	39.44		A621
	1800	460	445T	<b>E215</b> ★	445TTFN6036	20:1@	<b>\$15,428</b>	E9	95.8	172	2050	43.19		A621
	1200	460	445T	<b>E289</b>	445TTFN6087	20:1@	<b>\$19,470</b>	E9	95.8	181	2500	43.19	RB	NA
<b>200</b>	1800	460	445T	<b>E247</b> ★	445TTFN6038	20:1@	<b>\$18,763</b>	E9	96.2	226	2350	43.19	RB	NA
	1200	460	447/9T	<b>E282</b>	449TTFS6088	20:1@	<b>\$23,834</b>	E9	95.8	240	2900	51.69	H, RB	NA
<b>250</b>	3600	460	447/9TS	E271	449TSTFS6003	2:1	<b>\$28,641</b>	E9	96.5	274	2700	47.88	H	A624
	1800	460	445T	E287	445TTFN6040	20:1@	<b>\$22,119</b>	E9	95.8	285	2150	43.19	A, RB	NA
	1800	460	447/9T	E276	449TTFS6038	20:1@	<b>\$23,778</b>	E9	96.5	285	2850	51.69	H, RB	NA
	1200	460	L447/9T	E283	449TTFS6087	20:1@	<b>\$27,398</b>	E9	95.8	300	3350	51.69	H, RB	NA
<b>300</b>	3600	460	447/9TS	E272	449TSTFS6002	2:1	<b>\$37,124</b>	E9	96.2	330	2700	47.88	H	A624
	1800	460	447/9T	E277	449TTFS6037	20:1@	<b>\$26,900</b>	E9	96.5	339	3150	51.69	H, RB	NA
	1200	460	L447/9T	E284	449TTFS6390	N/A	<b>\$36,173</b>	E9	95.8	362	3850	56.71	H, RB	NA
<b>350</b>	3600	460	447/9TS	E273	449TSTFS6001	2:1	<b>\$42,573</b>	E9	96.2	382	2950	47.88		A624
	1800	460	447/9T	E278	-----	2:1	<b>\$35,102</b>	E9	96.2	395	3400	51.69	H, RB	NA
<b>400</b>	1800	460	447/9T	E291	-----	2:1	<b>\$35,421</b>	E9	95.8	455	3800	56.71	H	A623
<b>450</b>	1800	460	L447/9T	E292	449TTFS6065	N/A	<b>\$36,316</b>	E9	96.5	515	3800	56.71	H	A623

Blue shaded areas are Cast Iron Frames

★ **Stock Model**

\* **Requires nameplate modifications**

Catalog numbers (Cat No.) highlighted in bold blue have efficiency levels that meet or exceed U.S. EPAact and/or NRCan Canadian standards.

**Footnotes:**

- A NEMA Design A
- H Class H Insulation
- PW Part Winding Start Capability
- RB Roller Bearing on shaft end for belted loads only