

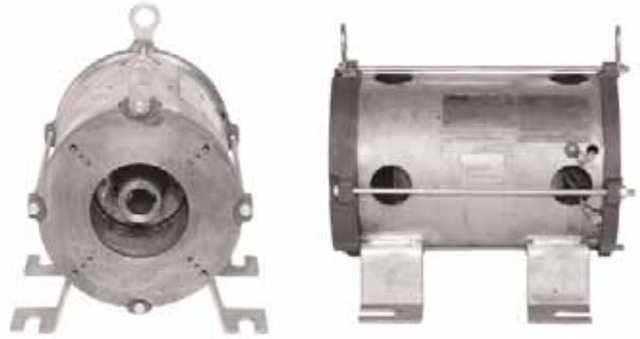
SUBMERSIBLE HYDRAULIC ELEVATOR PUMP MOTORS



3-PHASE • TOTALLY OPEN FRAME CONSTRUCTION
FOOT MOUNTED IN 160ZBS FRAME SIZE

Features:

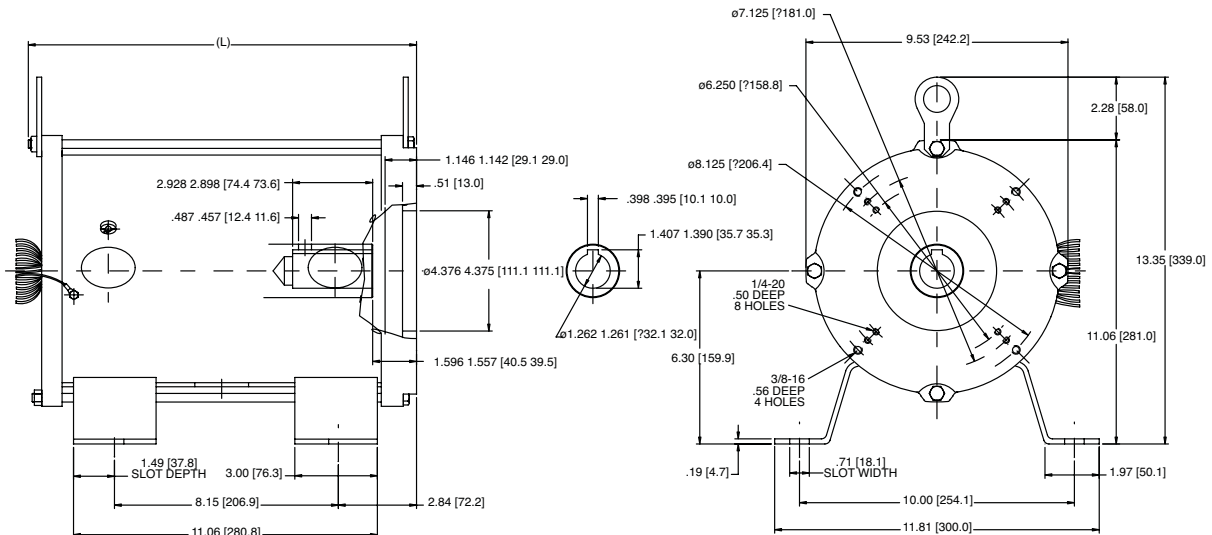
- Intermittent Duty
- Suitable for Wye-Delta Starters
- 1.0 service factor and 70°C Ambient rated
- Three bolt circles, 12 mounting holes, and face mounting to accept both the IMO and Allweiler pumps
- 10 foot long leads, spliced 40 inches from motor to prevent wicking of hydraulic fluid
- Thermostat leads are marked P1 and P2
- Class F insulation
- Two Stainless Steel nameplates, one shipped separate for remote mount
- UL Recognized Component Listing and CSA Approved



Applications:

These motors are designed to meet the demands in the Hydraulic Elevator Pump Industry. Our Submersible Hydraulic pump elevator motors are ready to be placed in elevator systems for applications in hydraulic pump passenger, service, freight and low-rise elevators. Rated up to 6 floors at speeds up to 200 fpm.

HP	SYN RPM	Frame	Volts	BTU/HR Motor Losses	KVA Code	FL Amps	Locked Rotor Amps	Model Number	Product Number	FL Eff.	Approx Shpg Wght (lbs)	List Price	Mult Sym
15	3600	160Z	200	14736	H	53	268	SD2S15Z6006YEH3	LM29656	72.2	110	\$862	SU1-A
	3600	160Z	230/460	14736	H	46/23	250/125	SD2S15Z61YEH3	LM29657	72.2	110	862	SU1-A
	3600	160Z	575	14736	H	18.4	100	SD2S15Z65YEH3	LM29658	72.2	110	862	SU1-A
20	3600	160Z	200	11792	G	64.4	363	SD2S20Z6006YEH3	LM29659	76.4	112	883	SU1-A
	3600	160Z	230/460	11792	G	56/28	316/158	SD2S20Z61YEH3	LM29660	76.4	112	883	SU1-A
	3600	160Z	575	11792	G	22.4	126	SD2S20Z65YEH3	LM29661	76.4	112	883	SU1-A
25	3600	160Z	200	10148	G	77.1	268	SD2S25Z6006YEH3	LM29662	79.0	115	962	SU1-A
	3600	160Z	230/460	10148	G	67/33.5	250/125	SD2S25Z61YEH3	LM29663	79.0	115	962	SU1-A
	3600	160Z	575	10148	G	26.8	100	SD2S25Z65YEH3	LM29664	79.0	115	962	SU1-A
30	3600	160Z	200	9603	G	92	268	SD2S30Z6006YEH3	LM29665	79.9	119	1072	SU1-A
	3600	160Z	230/460	9603	G	80/40	250/125	SD2S30Z61YEH3	LM29666	79.9	119	1072	SU1-A
	3600	160Z	575	9603	G	32	100	SD2S30Z65YEH3	LM29667	79.9	119	1072	SU1-A
40	3600	160Z	200	7271	G	115	268	SD2S40Z6006YEH3	LM29668	84.0	132	1374	SU1-A
	3600	160Z	230/460	7271	G	100/50	250/125	SD2S40Z61YEH3	LM29669	84.0	132	1374	SU1-A
	3600	160Z	575	7271	G	40	100	SD2S40Z65YEH3	LM29670	84.0	132	1374	SU1-A
50	3600	160Z	200	7271	H	140	268	SD2S50Z6006YEH3	LM29671	84.0	143	1567	SU1-A
	3600	160Z	230/460	7271	H	122/61	250/125	SD2S50Z61YEH3	LM29672	84.0	143	1567	SU1-A
	3600	160Z	575	7271	H	48.8	100	SD2S50Z65YEH3	LM29673	84.0	143	1567	SU1-A



L32 BRACKET CONVERSION KIT

Applications:

Used to adapt the Lincoln Submersible Elevator motors to some IMO and Alweiler Pumps. Kit includes needed through bolts to mount this kit to a Lincoln Submersible Elevator Motor.

Catalog Number	Disc. Sym	App. Wgt (lbs)	List Price
LM31777	A	12	\$460

Items in red are STOCK items.



HYDRAULIC ELEVATOR PUMP MOTORS

OPEN DRIP-PROOF CONSTRUCTION • 3-PHASE
FOOT MOUNTED
10 TO 100 HP

Features:

- Dual Rated Nameplates for 80 & 120 Starts/Hour
- Designed for Belt Driven Pumps
- Wye Start/Delta Run
- Class F Insulated
- 40° C Ambient
- F-1 Mounting
- Ball Bearings with Grease Fittings and Automatic Relief
- NEMA Dimensions
- CSA Approved, UL Recognized
- Constructed for low noise and low vibration.
- Made in USA



Applications:

Hydraulic pump passenger, service, freight, and dumbwaiter low rise elevators. Typically hydraulic elevators travel up to 6 floors at speeds up to 200 fpm.

80 STARTS PER HOUR

HP	SYN RPM	Frame	Volts	80 Starts FL Amps	Locked Rotor Amps	Model Number	Product Number	Notes (see page 306)	Approx Shpg Wght (lbs)	List Price	Mult Sym
15	3600	213T	200	41	187	SSD2P10/15T6006YEH2	LM30091		114	\$1006	HP1-A
	3600	213T	230/460	35.5/18	162/81	SSD2P10/15T61YEH2	LM30092		149	1006	HP1-A
	1800	215T	200	45.1	170	SSD4G10/15T6006YEH2	LM28867		128	924	HP1-A
	1800	215T	230/460	39.2/19.6	148/74	SSD4G10/15T61YEH2	LM28868		124	924	HP1-A
	1800	215T	575	15.7	59.2	SSD4P10/15T65YEH2	LM28869		128	924	HP1-A
20	3600	215T	200	53	267	SSD2P15/20T6006YEH2	LM30093		135	1315	HP1-A
	3600	215T	230/460	46/23	232/116	SSD2P15/20T61YEH2	LM30094		138	1315	HP1-A
	1800	254T	200	59.1	267	SSD4G15/20T6006YEH2	LM28873		203	1260	HP1-A
	1800	254T	230/460	51.4/25.7	232/116	SSD4G15/20T61YEH2	LM28874		205	1260	HP1-A
	1800	254T	575	20.6	93	SSD4P15/20T65YEH2	LM28875		203	1260	HP1-A
25	3600	254T	200	66.5	334	SSD2P20/25T6006YEH2	LM30095		128	1667	HP1-A
	3600	254T	230/460	58/29	290/145	SSD2P20/25T61YEH2	LM30096		134	1667	HP1-A
	1800	256T	200	73.6	368	SSD4G20/25T6006YEH2	LM28879		105	1593	HP1-A
	1800	256T	230/460	64/32	320/160	SSD4G20/25T61YEH2	LM28880		233	1593	HP1-A
	1800	256T	575	25.6	128	SSD4P20/25T65YEH2	LM28881		233	1593	HP1-A
30	3600	256T	200	80	419	SSD2P25/30T6006YEH2	LM30097		235	2005	HP1-A
	3600	256T	230/460	69/34.5	364/182	SSD2P25/30T61YEH2	LM30098		235	2005	HP1-A
	1800	284T	200	84	391	CCD4G25/30T6006YEH2	LM29850		300	2105	HP1-A
	1800	284T	230/460	73/36.5	340/170	CCD4G25/30T61YEH2	LM29851		316	2105	HP1-A
	1800	284T	575	29.2	136	CCD4G25/30T65YEH2	LM29854		300	2105	HP1-A
40	3600	284T	200	112	460	CCD2P30/40T6006YEH2	LM30099		320	2582	HP1-A
	3600	284T	230/460	97/48.5	400/200	CCD2P30/40T61YEH2	LM30100		279	2582	HP1-A
	1800	286T	200	112	495	CCD4G30/40T6006YEH2	LM29852		450	2441	HP1-A
	1800	286T	230/460	97/48.5	430/215	CCD4G30/40T61YEH2	LM29853		411	2441	HP1-A
	1800	286T	575	38.8	172	CCD4G30/40T65YEH2	LM29855		653	2441	HP1-A
50	3600	286T	200	135	667	CCD2P40/50T6006YEH2	LM30101		460	3298	HP1-A
	3600	286T	230/460	117/58.5	580/290	CCD2P40/50T61YEH2	LM30102		277	3298	HP1-A
	1800	324T	200	145	630	SD4G40/50T6006YEH2	LM28897		550	3267	HP1-A
	1800	324T	230/460	126/63	548/274	SD4G40/50T61YEH2	LM28898		466	3267	HP1-A
	1800	324T	575	50.5	220	SD4G40/50T65YEH2	LM28899		550	3267	HP1-A
60	1800	326T	200	176	794	SD4G50/60T6006YEH2	LM28903		519	3629	HP1-A
	1800	326T	230/460	153/76.5	690/345	SD4G50/60T61YEH2	LM28904		530	3629	HP1-A
	1800	326T	575	61	276	SD4G50/60T65YEH2	LM28905		519	3629	HP1-A
75	1800	364T	200	206	1000	SD4G60/75T6006YEH2	LM28909		693	4493	HP1-A
	1800	364T	230/460	179/89.5	870/435	SD4S60/75T61YEH2	LM28910		709	4493	HP1-A
	1800	364T	575	71.5	350	SD4G60/75T65YEH2	LM28911		709	4493	HP1-A
100	1800	365T	230/460	250/125	1084/542	SD4G75/100T61YEH2	LM28914		754	4705	HP1-A
	1800	365T	575	100	435	SD4P75/100T65YEH2	LM28915		754	4705	HP1-A

Prices and data subject to change without notice.

SHADED FRAME INDICATES CAST IRON CONSTRUCTION

Items in red are STOCK items.

HYDRAULIC ELEVATOR PUMP MOTORS

OPEN DRIP-PROOF CONSTRUCTION • 3-PHASE
FOOT MOUNTED
10 TO 100 HP



WYE WOUND FOR ELECTRONIC START OR ACROSS THE LINE STARTING • 80 STARTS PER HOUR

HP	SYN RPM	Frame	Volts	80 Starts FL Amps	Locked Rotor Amps	Model Number	Product Number	Notes (see page 306)	Approx Shpg Wght (lbs)	List Price	Mult Sym
5	1800	182T	200	15	73.6	SSD4P5T6006YEH1	LM28918		68	\$472	HP1-A
	1800	182T	230/460	13/6.5	64/32	SSD4P5T61YEH1	LM28919		89	472	HP1-A
	1800	182T	575	5.2	25.6	SSD4P5T65YEH1	LM28920		79	472	HP1-A
7 1/2	1800	182T	200	22.8	106	SSD4G7.5T6006EH1	LM28921		98	531	HP1-A
	1800	182T	230/460	19.8/9.9	92/46	SSD4G7.5T61EH1	LM28922		61	531	HP1-A
	1800	182T	575	7.9	36.8	SSD4P7.5T65YEH1	LM28923		118	531	HP1-A
10	1800	182T	200	29.7	146	SSD4G10T6006EH1	LM28924		112	783	HP1-A
	1800	182T	230/460	25.8/12.9	127/63.5	SSD4G10T61EH1	LM28925		84	783	HP1-A
	1800	182T	575	10.3	50.8	SSD4P10T65YEH1	LM28926		123	783	HP1-A

120 STARTS PER HOUR

HP	SYN RPM	Frame	Volts	120 Starts FL Amps	Locked Rotor Amps	Model Number	Product Number	Notes (see page 306)	Approx Shpg Wght (lbs)	List Price	Mult Sym
10	3600	213T	200	27	187	SSD2P10/15T6006YEH2	LM30091		114	\$1006	HP1-A
	3600	213T	230/460	23.4/11.7	162/81	SSD2P10/15T61YEH2	LM30092		149	1006	HP1-A
1800	1800	215T	200	28.8	170	SSD4G10/15T6006YEH2	LM28867		128	924	HP1-A
	1800	215T	230/460	25/12.5	148/74	SSD4G10/15T61YEH2	LM28868		124	924	HP1-A
	1800	215T	575	10	59.2	SSD4P10/15T65YEH2	LM28869		128	924	HP1-A
15	3600	215T	200	39	267	SSD2P15/20T6006YEH2	LM30093		135	1315	HP1-A
	3600	215T	230/460	34/17	232/116	SSD2P15/20T61YEH2	LM30094		138	1315	HP1-A
1800	1800	254T	200	44.2	267	SSD4G15/20T6006YEH2	LM28873		203	1260	HP1-A
	1800	254T	230/460	38.4/19.2	232/116	SSD4G15/20T61YEH2	LM28874		205	1260	HP1-A
	1800	254T	575	15.4	93	SSD4P15/20T65YEH2	LM28875		203	1260	HP1-A
20	3600	254T	200	53	334	SSD2P20/25T6006YEH2	LM30095		128	1667	HP1-A
	3600	254T	230/460	46/23	290/145	SSD2P20/25T61YEH2	LM30096		134	1667	HP1-A
1800	1800	256T	200	59.6	368	SSD4G20/25T6006YEH2	LM28879		105	1593	HP1-A
	1800	256T	230/460	52/26	320/160	SSD4G20/25T61YEH2	LM28880		233	1593	HP1-A
	1800	256T	575	20.8	128	SSD4P20/25T65YEH2	LM28881		233	1593	HP1-A
25	3600	256T	200	66.5	419	SSD2P25/30T6006YEH2	LM30097		235	2005	HP1-A
	3600	256T	230/460	58/29	364/182	SSD2P25/30T61YEH2	LM30098		235	2005	HP1-A
1800	1800	284T	200	70.2	391	CCD4G25/30T6006YEH2	LM29850		300	2105	HP1-A
	1800	284T	230/460	61/30.5	340/170	CCD4G25/30T61YEH2	LM29851		316	2105	HP1-A
	1800	284T	575	24.4	136	CCD4G25/30T65YEH2	LM29854		300	2105	HP1-A
30	3600	284T	200	83	460	CCD2P30/40T6006YEH2	LM30099		320	2582	HP1-A
	3600	284T	230/460	72/36	400/200	CCD2P30/40T61YEH2	LM30100		279	2582	HP1-A
1800	1800	286T	200	82.8	495	CCD4G30/40T6006YEH2	LM29852		450	2441	HP1-A
	1800	286T	230/460	72/36	430/215	CCD4G30/40T61YEH2	LM29853		411	2441	HP1-A
	1800	286T	575	28.8	172	CCD4G30/40T65YEH2	LM29855		653	2441	HP1-A
40	3600	286T	200	108	667	CCD2P40/50T6006YEH2	LM30101		460	3298	HP1-A
	3600	286T	230/460	94/47	580/290	CCD2P40/50T61YEH2	LM30102		277	3298	HP1-A
1800	1800	324T	200	118	630	SD4G40/50T6006YEH2	LM28897		550	3267	HP1-A
	1800	324T	230/460	103/51.5	548/274	SD4G40/50T61YEH2	LM28898		466	3267	HP1-A
	1800	324T	575	41	220	SD4G40/50T65YEH2	LM28899		550	3267	HP1-A
50	1800	326T	200	150	794	SD4G50/60T6006YEH2	LM28903		519	3629	HP1-A
	1800	326T	230/460	130/65	690/345	SD4G50/60T61YEH2	LM28904		530	3629	HP1-A
	1800	326T	575	52	276	SD4G50/60T65YEH2	LM28905		51	3629	HP1-A
60	1800	364T	200	167	1000	SD4G60/75T6006YEH2	LM28909		693	4493	HP1-A
	1800	364T	230/460	146/73	870/435	SD4G60/75T61YEH2	LM28910		709	4493	HP1-A
	1800	364T	575	58	350	SD4G60/75T65YEH2	LM28911		709	4493	HP1-A
75	1800	365T	230/460	188/94	1084/542	SD4G75/100T61YEH2	LM28914		754	4705	HP1-A
	1800	365T	575	75	435	SD4P75/100T65YEH2	LM28915		754	4705	HP1-A

Prices and data subject to change without notice.

SHADED FRAME INDICATES CAST IRON CONSTRUCTION

Items in red are STOCK items.