

575 Volt: General Purpose, Three Phase

Dripproof, Rigid Base

Applications: General purpose use on compressors, pumps, conveyors, fans, blowers, and other machinery in environments that are relatively clean and dry where 575 volt three phase power is readily available.



- Features:**
- Ball bearings
 - NEMA Service Factors
 - UL Recognized and CSA Certified



Suitable for use on VFD per guidelines on page 14.

HP	RPM	VOLTS	FRAME	OVER LOAD	CAT. NO.	MODEL NO.	LIST PRICE	MULT. SYMB.	NOM. EFF.	F.L. AMPS	APPROX. WGT. LBS.	"C" DIM.	FOOT NOTES
1/2	1800	575	56	NONE	G065 *	56T17D2112	\$239	F1	70.0	0.9	17	10.47	25
3/4	1800	575	56	NONE	G086 *	56T17D2110	\$267	F1	75.5	1.1	20	10.97	25
1	1800	575	56	NONE	K049 *	56T17D2130	\$274	F1	76.5	1.4	22	11.47	25
	1800	575	56HZ	AUTO	K081	56T17D15528	\$351	F1	77.0	1.45	28	10.99	Z,5
	1800	575	143T	AUTO	U922	143TTDR4055	\$396	E2	82.5	1.1	39	12.49	5,13
	1800	575	143T	NONE	E912 *	143TTDR5351	\$278	E2	82.5	1.1	41	12.49	5,13
	1200	575	145T	NONE	E934	145TTDR4080	\$364	E2	80.0	1.4	47	13.49	5,13
1 1/2	3600	575	143T	NONE	E798	143TTDR4006	\$309	E2	82.5	1.9	28	10.99	5,13
	1800	575	145T	NONE	E913 *	145TTDR5640	\$303	E2	84.0	1.8	39	12.49	5,13
	1800	575	56HZ	AUTO	K083	-----	\$368	F1	80.0	1.9	30	10.99	Z,5
	1800	575	145T	AUTO	U923	145TTDR4130	\$421	E2	84.0	1.8	39	12.49	5,13
	1800	575	56H	NONE	K061 *	56T17D5369	\$304	F1	80.0	1.9	28	10.94	5
2	3600	575	145T	NONE	U906	145TTDR4005	\$364	E2	84.0	2.2	31	10.99	5,13
	1800	575	145T	NONE	E914 *	145TTDR5665	\$334	E2	84.0	2.3	42	12.99	5,13
	1800	575	56HZ	AUTO	K084	-----	\$399	F1	81.5	2.5	36	11.99	Z,5
	1800	575	145T	AUTO	U924	145TTDR4136	\$454	E2	84.0	2.3	42	12.99	5,13
	1800	575	56H	NONE	K062 *	56T17D5370	\$334	F1	81.5	2.5	34	11.94	5
3	3600	575	145T	NONE	E932	145TTDR4105	\$382	E2	84.0	3.5	33	11.49	5,13
	1800	575	182T	NONE	E915 *	182TTDR4030	\$391	E2	86.5	3.3	72	13.19	13,25
	1800	575	182T	AUTO	U925	182TTDR4075	\$534	E2	86.5	3.45	78	14.22	13,25
5	3600	575	182T	NONE	U908	182TTDR4106	\$438	E2	86.5	4.8	83	13.72	13,25
	1800	575	184T	NONE	E916 *	184TTDR4030	\$425	E2	87.5	5.2	89	13.69	13,25
	1200	575	215T	NONE	E936	215TTDW4080	\$809	E2	87.5	5.6	154	18.55	13
7 1/2	3600	575	184T	NONE	E938	184TTDR4105	\$567	E2	87.5	7.0	78	14.72	13,25
	1800	575	213T	NONE	E758 *	213TTDW4030	\$591	E2	88.5	7.6	113	17.30	13
10	1800	575	215T	NONE	E759 *	215TTDW4030	\$759	E2	89.5	10.0	123	17.30	13
15	1800	575	254T	NONE	E760 *	254TTDX4030	\$1,137	E2	91.0	15.3	184	22.32	
20	1800	575	256T	NONE	E761 *	256TTDX4032	\$1,388	E2	91.0	20.8	189	22.32	
25	1800	575	284T	NONE	E762 *	284TTDP4035	\$1,612	E2	91.7	24.4	351	23.49	
30	1800	575	286T	NONE	E763	286TTDP4034	\$1,875	E2	92.4	28.8	285	24.99	
40	1800	575	324T	NONE	E764	324TTDP4028	\$2,332	E2	93.0	39.0	474	26.00	
50	1800	575	326T	NONE	E765 *	326TTDP4048	\$2,718	E2	93.0	49.0	510	27.50	
60	1800	575	364T	NONE	E766	364TTDS4040	\$3,332	E2	93.6	58.0	699	28.62	
75	1800	575	365T	NONE	E767	365TTDS4041	\$4,058	E2	94.1	71.0	730	28.62	
100	1800	575	404T	NONE	U903	404TTDS4042	\$5,175	E2	94.1	94.5	1004	32.50	
125	1800	575	405T	NONE	U904	405TTDS4049	\$6,196	E2	94.5	117.6	1083	34.00	
150	1800	575	444T	NONE	U911	444TTDS4069	\$8,949	E2	95.0	141	1335	37.75	
200	1800	575	445T	NONE	U912	445TTDS4070	\$11,305	E2	95.0	186	1447	39.75	

Blue shaded areas are Cast Iron Frames

* Stock Model

Catalog numbers (Cat No.) highlighted in bold blue have efficiency levels that meet or exceed U.S. EPAact and/or NRCan Canadian standards.

Footnotes:

Z 56HZ with 7/8" shaft dia., 3-1/2" shaft height, and slotted 56 frame base
 5 56H, 143T, and 145T Combination Base with 12 mounting holes

13 F1 Mounting Only, Cannot reassemble to F2
 25 Motor will NOT accept C-Face Kits

575 VOLT

575 Volt: General Purpose, Three Phase

Dripproof, C-Face



Applications: General purpose use on gear reducers, pumps, machine tools, and other direct-coupled equipment installed in environments that are relatively clean and dry where 575 volt three phase power is readily available. For use outdoors a drip cover may be required (see Accessories section).

- Features:**
- Ball bearings, mechanically locked on shaft end
 - NEMA Service Factors
 - UL Recognized and CSA Certified



Suitable for use on VFD per guidelines on page 14.

HP	RPM	VOLTS	FRAME	CAT. NO.	MODEL NO.	LIST PRICE	MULT. SYMB.	NOM. EFF.	F.L. AMPS	APPROX. WGT. LBS.	"C" DIM.	FOOT NOTES
1/2	1800	575	56C	G242 *	56T17D2115	\$250	F1	68.0	0.9	17	10.30	
3/4	1800	575	56C	G243 *	56T17D2116	\$279	F1	75.5	1.1	19	10.80	
1	1800	575	56C	G244	56T17D2127	\$284	F1	77.0	1.4	23	11.30	

* Stock Model

575 Volt: General Purpose, Three Phase

Totally Enclosed, Rigid Base



Applications: General purpose use on pumps, fans, blowers, compressors, conveyors, and other industrial machinery installed in damp, dusty, or dirty environments where 575 volt three phase power is readily available. Additionally, cast iron frame motors may be suitable for the process industries.

- Features:**
- Ball bearings, except where noted
 - 1.15 Service Factor
 - Accept C-Face kits, see Accessories section
 - Severe duty kits available for cast iron frame motors, see Accessories section
 - Cast iron motors feature: shaft slinger, regreasable bearings (182T and larger), lead lugs (364T and larger), and bearing caps on 444T and larger
 - UL Recognized and CSA Certified



Suitable for use on VFD per guidelines on page 14.

HP	RPM	VOLTS	FRAME	CAT. NO.	MODEL NO.	LIST PRICE	MULT. SYMB.	NOM. EFF.	F.L. AMPS	APPROX. WGT. LBS.	"C" DIM.	FOOT NOTES
1/3	1800	575	56	G304 *	56T17F2043	\$224	F1	65.5	0.64	17	10.22	25
1/2	3600	575	56	G309 *	56T34F5333	\$203	F1	66.0	0.9	26	11.82	
	1800	575	56	G322 *	56T17F2044	\$250	F1	70.0	0.9	18	10.72	25
3/4	3600	575	56	G327 *	56T34F5334	\$242	F1	74.0	1.3	23	11.82	
	1800	575	56	G340 *	56T17F2046	\$276	F1	75.5	1.1	22	11.22	25
1	3600	575	56	G345 *	56T34F5335	\$272	F1	74.0	1.5	30	11.82	d
	1800	575	143T	E828 *	143TTTN4030	\$342	E1	82.5	1.3	55	10.43	d,N
	1800	575	143T	E300 *	143TTTN6030	\$458	E9	85.5	1.2	55	10.43	d,N,X
	1800	575	143T	E827 *	143TTFR4030	\$325	E8	82.5	1.2	31	12.87	
	1800	575	56	G348 *	56T17F5307	\$289	F1	77.0	1.45	27	12.32	
	1200	575	145T	U672 *	145TTTN4080	\$437	E1	80.0	1.3	57	11.43	

Blue shaded areas are Cast Iron Frames

* Stock Model

Catalog numbers (Cat No.) highlighted in bold blue have efficiency levels that meet or exceed U.S. EPA and/or NRC Canadian standards.

Continued on next page.

Footnotes:

- d Will become build-up item when current stock is gone
- N Totally Enclosed, Non-Ventilated
- X XRI, Ultra High Efficiency Design
- 25 Motor will NOT accept C-Face Kits

575 Volt: General Purpose, Three Phase

Totally Enclosed, Rigid Base

HP	RPM	VOLTS	FRAME	CAT. NO.	MODEL NO.	LIST PRICE	MULT. SYMB.	NOM. EFF.	F.L. AMPS	APPROX. WGT. LBS.	"C" DIM.	FOOT NOTES
1 1/2	3600	575	143T	E835	143TTTN4005	\$361	E1	86.5	1.6	58	10.43	N
	3600	575	143T	E834	143TTFR4005	\$342	E8	82.5	1.6	38	12.87	
	3600	575	56	G363	56T34F5336	\$328	F1	80.0	1.8	28	11.82	
	1800	575	145T	E838 *	145TTFR4038	\$362	E8	84.0	1.8	50	14.37	
	1800	575	145T	E301	145TTTN6031	\$497	E9	84.0	1.8	65	11.43	N,X
	1800	575	145T	E839 *	145TTTN4035	\$380	E1	84.0	1.8	65	11.43	N
2	3600	575	145T	E844 *	145TTTN4005	\$418	E1	86.5	2.1	68	11.43	d,N
	3600	575	145T	E843	145TTFR4007	\$397	E8	84.0	2.1	40	13.37	
	3600	575	56H	G368	56T34F5337	\$382	F1	80.0	2.4	33	12.32	5
	1800	575	145T	E847 *	145TTFR4039	\$397	E8	84.0	2.2	52	13.87	
	1800	575	145T	E848 *	145TTTN4040	\$418	E1	85.5	2.4	68	11.43	N
	1800	575	145T	E302	145TTTN6030	\$546	E9	85.5	2.4	68	11.43	N,X
3	3600	575	182T	U603	182TTFR4005	\$449	E8	85.5	2.95	70	14.97	
	3600	575	182T	U604	182TTFS4005	\$471	E1	85.5	2.95	90	14.81	
	3600	575	56H	G386	-----	\$428	F1	84.0	3.1	43	13.52	5
	1800	575	182T	E303 *	182TTTS6030	\$740	E9	90.2	3.2	100	12.71	N,X
	1800	575	182T	U608 *	182TTFR4040	\$425	E8	87.5	3.4	70	14.97	
	1800	575	182T	U609 *	182TTFS4030	\$447	E1	87.5	3.35	98	14.81	
5	3600	575	184T	U614	184TTFR4005	\$555	E8	87.5	4.9	80	15.97	
	3600	575	184T	U615 *	184TTFS4005	\$582	E1	87.5	5.0	110	15.81	
	1800	575	184T	E304	184TTFS6030	\$858	E9	90.2	4.9	130	15.81	X
	1800	575	184T	U620 *	184TTFS4030	\$520	E1	87.5	5.2	112	15.81	
	1800	575	184T	U619 *	184TTFR4040	\$496	E8	88.5	5.2	80	14.96	
7 1/2	3600	575	213T	U625	213TTFW4005	\$725	E8	88.5	7.3	100	18.73	
	3600	575	213T	U671 *	213TTFS4005	\$762	E1	88.5	7.6	197	18.20	
	1800	575	213T	E305 *	213TTFS6030	\$1,051	E9	91.7	7.6	200	19.70	X
	1800	575	213T	U630 *	213TTFW4030	\$711	E8	89.5	8.0	115	18.73	
	1800	575	213T	U631 *	213TTFS4030	\$746	E1	89.5	8.0	200	18.20	
10	3600	575	215T	E821	215TTFW4005	\$847	E8	89.5	9.6	115	20.23	
	3600	575	215T	U637	215TTFS4005	\$889	E1	90.2	9.6	190	19.70	
	1800	575	215T	E306	215TTFS6030	\$1,266	E9	91.7	10.0	225	19.70	X
	1800	575	215T	U641 *	215TTFS4030	\$904	E1	89.5	10.0	200	19.70	
	1800	575	215T	U640 *	215TTFW4030	\$861	E8	89.5	10.4	125	20.23	
15	3600	575	254T	U645	254TTFL14005	\$1,175	E8	91.0	14.0	178	22.99	AL
	3600	575	254T	U638	254TTFPA4005	\$1,234	E1	90.2	14.4	325	23.69	
	1800	575	254T	U648 *	254TTFNA4030	\$1,226	E1	91.0	15.6	341	23.52	
	1800	575	254T	E307 *	254TTFNA6030	\$1,594	E9	92.4	15.0	350	23.52	X
	1800	575	254T	E997	254TTFL14030	\$1,167	E8	91.0	16.0	178	22.99	AL
20	3600	575	256T	U650	256TTFNA4005	\$1,620	E1	90.2	18.8	350	25.27	
	1800	575	256T	U653 *	256TTFNA4030	\$1,509	E1	91.0	20.0	400	25.27	
	1800	575	256T	E308	256TTFNA6030	\$1,986	E9	93.0	19.3	425	25.27	X
	1800	575	256T	E998	256TTFL14030	\$1,437	E8	91.0	20.4	201	26.24	AL
25	3600	575	284TS	U654	284STFFPA4005	\$1,957	E1	91.0	24.0	400	24.89	
	1800	575	284T	E800 *	284TTFPA4030	\$1,778	E1	92.4	25.2	400	26.27	
	1800	575	284T	E309	284TTFNA6030	\$2,365	E9	93.6	24.6	500	26.34	X
30	3600	575	286TS	E819	286STFFPA4005	\$2,157	E1	91.0	28.8	476	26.30	
	3600	575	286TS	E318	-----	\$3,027	E9	93.6	27.0	496	26.39	X
	1800	575	286T	E817 *	286TTFPA4030	\$2,159	E1	92.4	29.6	450	27.77	
	1800	575	286T	E310 *	286TTFNA6030	\$2,750	E9	94.1	29.0	525	27.88	X
40	3600	575	324TS	E319	324STFS6005	\$3,992	E9	94.1	37.5	675	27.37	X
	1800	575	324T	E311 *	324TTFS6030	\$3,653	E9	94.1	38.8	750	30.37	X
	1800	575	324T	E815 *	324TTFPA4030	\$2,792	E1	93.0	40.0	555	28.97	
50	3600	575	326TS	E320	326STFS6005	\$5,164	E9	94.5	46.5	725	28.87	X
	1800	575	326T	U659 *	326TTFPA4030	\$3,595	E1	93.0	49.0	675	30.47	
	1800	575	326T	E312	326TTFS6030	\$4,486	E9	94.5	48.0	775	31.87	X

Blue shaded areas are Cast Iron Frames

★ Stock Model

Catalog numbers (Cat No.) highlighted in bold blue have efficiency levels that meet or exceed U.S. EPart and/or NRCan Canadian standards.

Footnotes:

d Will become build-up item when current stock is gone
 AL Aluminum Frame Construction

N Totally Enclosed, Non-Ventilated
 X XRI, Ultra High Efficiency Design
 5 56H, 143T, and 145T Combination Base with 12 mounting holes

SB300 – Prices and Specifications are subject to change without notice.

575 VOLT

575 Volt: General Purpose, Three Phase

Totally Enclosed, Rigid Base

HP	RPM	VOLTS	FRAME	CAT. NO.	MODEL NO.	LIST PRICE	MULT. SYMB.	NOM. EFF.	F.L. AMPS	APPROX. WGT. LBS.	"C" DIM.	FOOT NOTES
60	3600	575	364TS	E321	364TSTFS6005	\$6,794	E9	94.5	53.5	925	29.38	X
	1800	575	364T	E313 *	364TTFS6040	\$6,436	E9	95.0	55.0	1000	31.50	X
	1800	575	364T	U660 *	364TTFS4040	\$5,275	E1	93.6	58.0	975	31.50	
75	3600	575	365TS	E322	365TSTFS6002	\$8,531	E9	94.5	67.0	1025	30.38	X
	1800	575	365T	E805 *	365TTFS4040	\$6,742	E1	94.1	71.0	1035	32.50	
	1800	575	365T	E315	365TTFS6040	\$8,159	E9	94.1	69.0	1100	32.50	X
100	3600	575	405TS	E323	405TSTFS6005	\$11,431	E9	95.0	87.0	1250	34.12	X
	1800	575	405T	E314	405TTFS6040	\$10,080	E9	95.4	90.0	1375	37.12	X
	1800	575	405T	U661	405TTFS4040	\$8,132	E1	94.5	91.0	1267	37.12	
125	3600	575	444TS	E324	444TSTFS16002	\$14,944	E9	95.4	109	1750	37.50	PW,X
	1800	575	444T	E316	444TTFS6044	\$13,270	E9	95.4	113	1850	41.25	PW,X
	1800	575	444T	U662	444TTFS4040	\$10,490	E1	94.5	114	1826	41.25	
150	1800	575	445T	E317	445TTFN6037	\$15,428	E9	95.8	138	2050	43.19	PW,X
200	1800	575	445T	U667	445TTFN4049	\$15,500	E1	95.0	180	2311	43.19	
	1800	575	445T	E326	445TTFN6039	\$18,763	E9	96.2	181	2350	43.19	RB,X
250	1800	575	445T	L453	445TTFN8041	\$17,695	E9	95.0	228	2394	43.19	RB
300	1800	575	445T	L461	445TTFN8043	\$19,903	E9	95.0	272	2428	43.19	H,RB,YD,17

Blue shaded areas are Cast Iron Frames

★ **Stock Model**

Catalog numbers (Cat No.) highlighted in bold blue have efficiency levels that meet or exceed U.S. EPCa and/or NRCa Canadian standards.

575 Volt: General Purpose, Three Phase

Totally Enclosed, C-Face



Applications: General purpose use on gear reducers, pumps, machine tools, and other direct-coupled equipment installed in damp, dusty, or dirty environments where 575 volt three phase power is readily available. Suitable for use on variable frequency drives, see Motor Terminology/Selection Guide for guidelines.

- Features:**
- Ball bearings, mechanically locked on shaft end
 - 1.15 Service Factor
 - UL Recognized and CSA Certified

HP	RPM	VOLTS	FRAME	CAT. NO.	MODEL NO.	LIST PRICE	MULT. SYMB.	NOM. EFF.	F.L. AMPS	APPROX. WGT. LBS.	"C" DIM.	FOOT NOTES
1/4	1800	575	56C	K405	56T17F2047	\$222	F1	62.0	0.52	13	9.94	
1/3	1800	575	56C	G503 *	56T17F2048	\$237	F1	68.0	0.64	15	10.19	
1/2	1800	575	56C	G508 *	56T17F2049	\$276	F1	68.0	0.90	18	10.69	
3/4	1800	575	56C	G523 *	56T17F2050	\$304	F1	75.5	1.1	21	11.19	
1	1800	575	143TC	C230	143TTFR5333	\$326	E6	77.0	1.45	26	12.37	
	1800	575	56C	G528 *	56T17F5319	\$311	F1	77.0	1.45	25	12.32	
1 1/2	1800	575	145TC	C231	145TTFR5340	\$379	E6	80.0	1.9	29	12.37	
	1800	575	56C	G548	56T17F5320	\$341	F1	80.0	1.9	31	12.32	
2	1800	575	145TC	C232	145TTFR5341	\$405	E6	82.5	2.25	41	13.87	
	1800	575	56C	G549	56T17F5329	\$368	F1	82.5	2.25	41	13.82	

★ **Stock Model**

Footnotes:

- H Class H Insulation
- PW Part Winding Start Capability
- RB Roller Bearing on shaft end for belted loads only
- X XRI, Ultra High Efficiency Design
- YD 12 Leads for WYE-DELTA, Part Winding, or across-the-line starting
- 17 1.0 Service Factor

575 Volt: General Purpose, Three Phase

Totally Enclosed, C-Face with Rigid Base and C-Face with Removable Base

Applications: General purpose use on gear reducers, pumps, machine tools, and other direct-coupled equipment installed in damp, dusty, or dirty environments where 575 volt three phase power is readily available.



- Features:**
- Ball bearings, mechanically locked on shaft end
 - 1.15 Service Factor
 - Class F Insulation
 - 56 frame motors accept brake kits except where noted, see Accessories section
 - UL Recognized and CSA Certified
 - Two year warranty on EPA efficient (bold blue catalog numbers)



Additional features for “Four-In-One” motors only:

- CR²⁰⁰ Corona resistant magnet wire
- Bolt-on, removable rigid base
- Suitable for horizontal and vertical mounting
- Will accept drip cover kits, see Accessories section

Suitable for use on VFD per guidelines on page 14.

HP	RPM	VOLTS	FRAME	“FOUR-IN-ONE”	CAT. NO.	MODEL NO.	LIST PRICE	MULT. SYMB.	NOM. EFF.	F.L. AMPS	APPROX. WGT. LBS.	“C” DIM.	FOOT NOTES
1/3	3600	575	56C	◆	K702★	56T34T5309	\$203	F2	64.0	0.80	18	9.93	d,N,6,13,24
	1800	575	56C	◆	K703★	56T17T5316	\$260	F2	68.0	0.65	22	9.93	N,6,13,24
1/2	3600	575	56C	◆	K704★	56T34F5348	\$226	F2	66.0	0.9	22	11.81	6,13
	1800	575	56C	◆	K705★	56T17F5336	\$288	F2	68.0	1.0	25	11.81	6,13
3/4	3600	575	56C	◆	K706★	56T34F5349	\$264	F2	68.0	1.3	24	11.81	6,13
	1800	575	56C	◆	K707★	56T17F5337	\$315	F2	75.5	1.2	25	11.81	6,13
1	3600	575	56C	◆	K708★	56T34F5350	\$294	F2	77.0	1.5	24	11.81	6,13
	1800	575	56HC	◆	K709★	56T17F5338	\$322	F2	77.0	1.45	27	12.31	5,6,13
1 1/2	3600	575	56C	◆	K721★	56T34F5351	\$351	F2	80.0	1.8	26	11.81	6,13
	1800	575	145TC		U705	145TTFR4052	\$388	E8	84.0	1.8	44	14.37	
	1800	575	56HC	◆	K722★	56T17F5339	\$352	F2	80.0	1.9	31	12.31	5,6,13
2	3600	575	56HC	◆	K723★	56T34F5352	\$405	F2	80.0	2.4	30	12.31	5,6,13
	1800	575	145TC		U708	145TTFR4126	\$416	E8	84.0	2.2	46	13.87	
	1800	575	56HC	◆	K724★	56T17F5340	\$383	F2	82.5	2.3	41	13.81	5,6,13
3	3600	575	56HC	◆	K725★	56T34F5353	\$450	F2	84.0	3.1	41	13.31	5,6,13
	1800	575	182TC	◆	C383★	182TTFR4345	\$632	E8	87.5	3.35	77	15.50	6
	1800	575	56HCZ	◆	G591	56T17F5356	\$430	F2	85.5	3.4	48	14.87	Z,5,6,13,17
5	1800	575	184TC	◆	C387★	184TTFR4345	\$666	E8	87.5	5.2	87	16.50	6,24
	3600	575	213TC		U742	213TTFW4008	\$896	E8	89.5	7.4	118	20.97	24
7 1/2	1800	575	213TC	◆	C391★	213TTFW4345	\$884	E8	89.5	8.0	122	19.47	6,24
	1800	575	215TC	◆	C394	215TTFW4345	\$972	E8	89.5	10.4	135	20.97	6,24
15	1800	575	254TC		U723	254TTFL4035	\$1,343	E8	91.0	16.0	236	23.24	AL,24

◆ Four-In-One ★ Stock Model

Catalog numbers (Cat No.) highlighted in bold blue have efficiency levels that meet or exceed U.S. EPA and/or NRC Canadian standards.

Footnotes:

- d Will become build-up item when current stock is gone
- AL Aluminum Frame Construction
- Z 56HZ with 7/8" shaft diameter, 3 1/2" height and slotted 56 frame base
- 5 56H, 143T, and 145T Combination Base with 12 mounting holes
- 6 Bolt-on, removable base for footless mounting option
- 13 F1 mounting only, cannot reassemble to F2
- 17 1.0 Service Factor
- 24 Motor will NOT accept a Brake Kit

575 Volt: Premium Severe Duty/Chemical Processing Three Phase, NEMA Premium® Efficiency, Blue Chip XRI®

Totally Enclosed, Rigid Base



Applications: Chemical plants, paper mills, refineries, mines, food processing, foundries, and other severe duty environments where long life and ultra-high efficiency are desired. Guaranteed efficiencies offer an **eXtra Return** on your **Investment** when using these premium efficiency motors on high cycle or long run applications.

- Features:**
- Meets or exceeds NEMA Premium® efficiencies, except where noted
 - Blue Chip® quality, 100% cast iron construction for rigidity and reduced vibration
 - Provisions to add stub shaft for an encoder (182T-449T, TEFC only)
 - Internal and external epoxy paint
 - MAX GUARD® Class F insulation system
 - 1.15 Service Factor on sinewave, 1.0 Service Factor on IGBT power
 - Bearing caps (254 + larger)
 - Precision balanced
 - Extended grease tubes, regreasable in service
 - Brass drain and breather
 - Meets IEEE45 USCG Marine Duty, IP54 Construction
 - Hazardous Duty™ Division 2 CSA certification nameplate, for hazardous locations, Class I, Groups A, B, C, and D
 - Meets temperature code T2B
 - Actual test and vibration data supplied with each motor
 - Ball Bearings, except where noted
 - UL Recognized (through 449T) and CSA Certified
 - Three year warranty



Available with Nameplate Modification:

- 2:1, 20:1 or 1000:1 Constant Torque, 1.0 Service Factor on IGBT (PWM) power
- 1.25 Service Factor through 40 HP (sinewave only)
- 50 HZ at same HP, 1.0 Service Factor through 40 HP (sinewave only)
- Contact Marathon Electric for optional nameplate markings on 50 HP and larger

Suitable for use on VFD per guidelines on page 14.

HP	RPM	VOLTS	FRAME	CAT. NO.	MODEL NO.	CT SPEED RANGE*	LIST PRICE	MULT. SYMB.	NOM. EFF.	F.L. AMPS	APPROX. WGT. LBS.	"C" DIM.	FOOT NOTES	C FACE KITS
1	1800	575	143T	E666 *	143TTTN6530	1000:1	\$458	E9	85.5	1.2	55	10.43	75,76,N	A603
1 1/2	3600	575	143T	E851 *	143TTTN6505	1000:1	\$573	E9	86.5	1.6	58	10.43	d,75,76,N	A603
	1800	575	145T	E667	145TTTN6529	1000:1	\$497	E9	84.0	1.8	65	11.43	75,76,N,NP	A655
2	3600	575	145T	E852	145TTTN6505	1000:1	\$601	E9	85.5	2.0	68	11.43	75,76,N	A655
	1800	575	145T	E668 *	145TTTN6530	1000:1	\$546	E9	85.5	2.4	68	11.43	75,76,N,NP	A655
3	3600	575	182T	E853	182TTTS6505	1000:1	\$825	E9	87.5	3.0	105	12.71	75,N	A644
	1800	575	182T	E669 *	182TTTS6530	1000:1	\$740	E9	90.2	3.2	100	12.71	75,N	A644
5	3600	575	184T	E655 *	184TTFS6505	2:1	\$917	E9	89.5	4.7	142	16.19	75	A645
	1800	575	184T	E670 *	184TTFS6530	20:1	\$858	E9	90.2	5.0	130	16.19	75	A645
	1200	575	215T	E683 *	215TTFS6580	20:1	\$1,378	E9	89.5	5.5	202	19.72	d,75	A206
7 1/2	3600	575	213T	E656 *	213TTTS6505	1000:1	\$1,108	E9	91.7	7.1	200	17.19	75,N	A206
	1800	575	213T	E671 *	213TTFS6530	20:1	\$1,051	E9	91.7	7.6	200	18.22	75	A206
	1200	575	254T	E684	254TTFNA6578	20:1	\$1,786	E9	91.0	7.9	326	23.52	75	A284
10	3600	575	215T	E657	215TTFS6505	2:1	\$1,293	E9	91.7	9.5	218	19.72	75	A206
	1800	575	215T	E672 *	215TTFS6530	20:1	\$1,266	E9	91.7	10.0	225	19.72	75	A206
	1200	575	256T	E685	256TTFNA6578	20:1	\$2,182	E9	91.0	10.5	405	25.27	75	A284
15	3600	575	254T	E658	254TTFNA6503	2:1	\$1,732	E9	91.7	14.2	345	23.52	75	A284
	1800	575	254T	E673 *	254TTFNA6528	20:1	\$1,628	E9	92.4	15.0	350	23.52	75	A284
	1200	575	284T	E694 *	284TTFNA6580	20:1	\$2,896	E9	91.7	16.3	479	26.34	d,75	A618
20	3600	575	256T	E659 *	256TTFNA6503	2:1	\$2,146	E9	92.4	18.7	375	25.27	75	A284
	1800	575	256T	E674 *	256TTFNA6528	20:1	\$2,026	E9	93.0	19.2	425	25.27	75	A284
	1200	575	286T	E695 *	286TTFNA6580	20:1	\$3,528	E9	91.7	21.4	550	27.84		A618
25	3600	575	284TS	E660 *	284TSTFNA6502	2:1	\$2,644	E9	93.6	22.4	481	24.97		A618
	1800	575	284T	E675 *	284TTFNA6527	20:1	\$2,413	E9	93.6	24.8	478	26.34		A618
	1200	575	324T	E696	324TTFS6577	20:1	\$4,276	E9	93.0	26.0	675	28.87		A214
30	1800	575	286T	E676 *	286TTFNA6527	20:1	\$2,805	E9	94.1	29.2	525	27.84		A618
	1200	575	326T	E400	326TTFS6580	20:1	\$4,926	E9	93.0	31.0	725	30.37		A214

Blue shaded areas are Cast Iron Frames

* Stock Model

* Requires nameplate modification

Catalog numbers (Cat No.) highlighted in bold blue have efficiency levels that meet or exceed U.S. EPAct and/or NRCan Canadian standards.

Footnotes:

- d Will become build-up item when current stock is gone
- N Totally Enclosed, Non-Ventilated
- NP Does not meet NEMA Premium efficiency

- 75 Addition of C Face Kit may result in non NEMA "BA" dimension for the resulting "BA" dimension, consult chart
- 76 Addition of C Face Kit results in non NEMA "AH" dimension, NEMA "AH" is 2.12", rework "AH" is 2.38"

Continued on next page.

575 Volt: Premium Severe Duty/Chemical Processing Three Phase, NEMA Premium® Efficiency, Blue Chip XRI®

Totally Enclosed, Rigid Base

HP	RPM	VOLTS	FRAME	CAT. NO.	MODEL NO.	CT SPEED RANGE*	LIST PRICE	MULT. SYMB.	NOM. EFF.	F.L. AMPS	APPROX. WGT. LBS.	"C" DIM.	FOOT NOTES	C FACE KITS
40	3600	575	324TS	E662	324TSTFS6505	2:1	\$4,072	E9	93.6	37.5	656	27.37		A214
	1800	575	324T	E677 ★	324TTFS6527	20:1@	\$3,726	E9	94.1	38.0	700	30.37	d	A214
	1200	575	364T	E401	364TTFS6590	20:1@	\$6,675	E9	93.6	40.0	950	31.50	NP	A395
50	3600	575	326TS	E663	326TSTFS6502	2:1	\$5,268	E9	93.6	46.5	725	28.87		A214
	1800	575	326T	E678 ★	326TTFS6527	20:1@	\$4,576	E9	94.5	48.0	775	30.37		A214
	1200	575	365T	E402	365TTFS6590	20:1@	\$7,666	E9	93.6	49.0	975	32.50	NP	A395
60	3600	575	364TS	E664	364TSTFS6505	2:1	\$6,929	E9	94.5	53.5	925	29.38		A396
	1800	575	364T	E679 ★	364TTFS6537	20:1@	\$6,565	E9	95.0	55.0	1000	31.50		A395
	1200	575	404T	E403	404TTFS6592	20:1@	\$8,982	E9	94.5	57.5	1156	35.62		A223
75	3600	575	365TS	E665 ★	365TSTFS6502	2:1	\$8,702	E9	94.5	67.0	1002	30.38		A396
	1800	575	365T	E680	365TTFS6537	20:1@	\$8,322	E9	95.4	69.0	1100	32.50		A395
	1200	575	405T	E404	405TTFS6587	20:1@	\$10,574	E9	94.5	71.5	1280	37.12		A223
100	3600	575	405TS	E493	405TSTFS6502	2:1	\$11,660	E9	95.0	87.0	1295	34.12		A226
	1800	575	405T	E681 ★	405TTFS6538	20:1@	\$10,282	E9	90.5	90.5	1330	37.12		A223
	1200	575	444T	E405	444TTFS6590	20:1@	\$14,451	E9	94.5	96.0	2100	41.25	NP	A229
125	3600	575	444TS	E494	444TSTFS6505	2:1	\$15,243	E9	95.4	109	1725	37.50		A229
	1800	575	444T	E697	444TTFS6540	20:1@	\$13,535	E9	95.4	113	1725	41.25		A229
	1200	575	445T	E406	445TTFN6590	20:1@	\$17,750	E9	95.0	124	2000	43.26		A620
150	3600	575	445TS	E495	445TSTFN6502	2:1	\$18,311	E9	95.8	132	2187	39.44		A621
	1800	575	445T	E682	445TTFN6537	20:1@	\$15,736	E9	95.8	138	2070	43.26		A620
	1200	575	445T	E407	445TTFN6591	20:1@	\$19,859	E9	95.8	145	2500	43.26	RB	A620
200	3600	575	445TS	E496	445TSTFN6506	2:1	\$23,164	E9	95.8	178	2300	39.44		A621
	1800	575	447/9T	E856 ★	449TTFS6564	20:1@	\$22,009	E9	96.5	180	2700	51.84	H,RB	
	1200	575	447/9T	E408	449TTFS6582	20:1@	\$24,311	E9	95.8	192	2927	51.84	H,RB	
250	1800	575	447/9T	E344	-----		\$27,612	E9	96.5	228	2830	51.69	H,RB	
300	1800	575	447/9T	E345	449TTFS6534	20:1@	\$30,652	E9	96.5	271	3211	51.84	H,RB	

Blue shaded areas are Cast Iron Frames

★ Stock Model

* Requires nameplate modification
@ Requires "R164" rework (reduces efficiency)

Catalog numbers (Cat No.) highlighted in bold blue have efficiency levels that meet or exceed U.S. EPA and/or NRC Canadian standards.

Footnotes:

- d Will become build-up item when current stock is gone
- H Class H Insulation
- NP Does not meet NEMA Premium efficiency
- RB Roller Bearing on shaft end for belted loads only

575 Volt: Premium Severe Duty/Chemical Processing/IEEE-841, Three Phase, NEMA Premium® Efficiency, Blue Chip XRI®

Totally Enclosed, Rigid Base



Applications: For extreme applications in the process industries such as chemical plants, paper mills, refineries, mines, food processing, foundries, and other severe duty environments where long life and ultra-high efficiency are desired. Guaranteed efficiencies offer an **eXtra Return** on your **I**nvestment when using these premium efficiency motors on high cycle or long run time applications.

- Features:**
- Meets or exceeds NEMA Premium® efficiencies, except where noted
 - Blue Chip® quality, 100% cast iron construction for rigidity and reduced vibration
 - Provisions to add stub shaft for an encoder
 - Internal and external epoxy paint
 - MAX GUARD® Class F insulation system
 - 1.15 Service Factor on sinewave, 1.0 Service Factor on IGBT Power
 - Extended grease tubes, regreasable in service
 - Brass drain and breather
 - Meets IEEE45, USCG Marine Duty, IP54 Construction
 - Meets Ford EMS Automotive Specification
 - Hazardous Duty™ Division 2 CSA certification nameplate, for hazardous locations, Class 1, Groups A, B, C, and D
 - Meets temperature code T2B
 - Actual test and vibration data supplied with each motor
 - Ball bearings, except where noted
 - UL Recognized (through 449T), CSA Certified
 - Three year warranty



Available with Nameplate Modification (through 40 HP):

- 2:1, 20:1, or 1000:1 Constant Torque, 1.0 Service Factor on IGBT (PWM) power
- 1.25 Service Factor through 40 HP (sinewave only)
- 50 HZ at same HP, 1.0 Service Factor through 40 HP (sinewave only)
- Contact Marathon Electric for optional nameplate markings on 50 HP and larger



Suitable for use on VFD per guidelines on page 14.

HP	RPM	VOLTS	FRAME	CAT. NO.	MODEL NO.	CT SPEED RANGE*	LIST PRICE	MULT. SYMB.	NOM. EFF.	F.L. AMPS	APPROX. WGT. LBS.	"C" DIM.	FOOT NOTES	C FACE KITS
1	1800	575	143T	W502	143THTN19033	1000:1	\$618	E9	85.5	1.2	55	10.43	75,76,N	A181
1 1/2	3600	575	143T	W506	143THTN9005	1000:1	\$774	E9	86.5	1.6	58	10.43	75,76,N	A181
	1800	575	145T	W508 ★	145THTN19045	1000:1	\$670	E9	84.0	1.75	65	11.43	d,75,76,N,NP	A262
2	3600	575	145T	W512	145THTN19002	1000:1	\$811	E9	85.5	2.1	68	11.43	75,76,N	A262
	1800	575	145T	W514 ★	145THTN19033	1000:1	\$736	E9	85.5	2.4	68	11.43	d,75,76,N,NP	A262
3	3600	575	182T	W518	-----		\$1,114	E9	87.5	3.0	105	12.71	75,N	
	1800	575	182T	W520 ★	182THTS19033	20:1	\$999	E9	90.2	3.2	100	12.71	d,75,N	A182
5	3600	575	184T	W524	184THFS19006	2:1	\$1,238	E9	89.5	4.7	142	16.19	75	A182
	1800	575	184T	W526 ★	184THFS9030	20:1	\$1,158	E9	90.2	5.0	130	16.19	75	A182
	1200	575	215T	W528	215THFS19077	20:1	\$1,860	E9	89.5	5.5	202	19.72	75	A183
7 1/2	3600	575	213T	W531	213THTS19005	2:1	\$1,495	E9	91.7	7.1	200	17.18	75,N	A183
	1800	575	213T	W533 ★	213THFS9030	20:1	\$1,419	E9	91.7	7.7	200	19.72	75	A183
	1200	575	254T	W535	-----		\$2,233	E9	91.0	7.9	326	23.52		
10	3600	575	215T	W538	215THFS19006	2:1	\$1,746	E9	91.7	9.4	218	19.72	75	A183
	1800	575	215T	W540 ★	215THFS19033	20:1	\$1,709	E9	91.7	11.2	225	19.73	75	A183
	1200	575	256T	W542	256THFNA19085	20:1	\$2,727	E9	91.0	10.5	405	25.27		
15	3600	575	254T	W545	-----		\$2,165	E9	91.7	14.2	345	23.52		
	1800	575	254T	W547 ★	254THFNA9030	20:1	\$2,033	E9	92.4	15.1	350	23.52	75	A184
	1200	575	284T	W549	284TTFNA16585	20:1	\$3,620	E9	91.7	16.3	479	26.34		A618
20	3600	575	256T	W552	-----		\$2,683	E9	92.4	18.7	375	25.27		
	1800	575	256T	W554 ★	256THFNA19033	20:1	\$2,533	E9	93.0	19.2	425	25.27		A184
	1200	575	286T	W556	286THFNA19077	20:1	\$4,410	E9	91.7	21.5	550	27.84		A186

Blue shaded areas are Cast Iron Frames

★ Stock Model

* Requires nameplate modification

Catalog numbers (Cat No.) highlighted in bold blue have efficiency levels that meet or exceed U.S. EPA and/or NRCAN Canadian standards.

Footnotes:

- d Will become build-up item when current stock is gone
- N Totally Enclosed, Non-Ventilated
- NP Does not meet NEMA Premium efficiency

- 75 Addition of C Face Kit may result in non NEMA "BA" dimension for the resulting "BA" dimension, consult chart
- 76 Addition of C Face Kit results in non NEMA "AH" dimension, NEMA "AH" is 2.12", rework "AH" is 2.38"

Continued on next page.

575 Volt: Premium Severe Duty/Chemical Processing/IEEE-841, Three Phase, NEMA Premium® Efficiency, Blue Chip XRI®

Totally Enclosed, Rigid Base

HP	RPM	VOLTS	FRAME	CAT. NO.	MODEL NO.	CT SPEED RANGE*	LIST PRICE	MULT. SYMB.	NOM. EFF.	F.L. AMPS	APPROX. WGT. LBS.	"C" DIM.	FOOT NOTES	C FACE KITS
25	3600	575	284TS	W559	284TSHFNA9005	2:1	\$3,305	E9	93.6	22.5	481	24.97		A185
	1800	575	284T	W561	284THFNA19033	20:1	\$3,015	E9	93.6	24.8	478	26.34		A186
	1200	575	324T	W563	324THFS9080	20:1@	\$5,346	E9	93.0	26.0	675	28.87		A214
30	3600	575	286TS	W566	-----		\$3,860	E9	93.6	27.0	500	26.47		
	1800	575	286T	W568	286THFNA19033	20:1	\$3,507	E9	94.1	29.2	525	27.84		A186
	1200	575	326T	W643 ★	326THFS19078	20:1@	\$6,157	E9	93.0	31.0	725	30.37	d	A187
40	3600	575	324TS	W572	-----		\$5,090	E9	93.6	37.5	656	27.37		
	1800	575	324T	W574 ★	324THFS19033	20:1@	\$4,657	E9	94.1	38.0	700	30.37	d	A187
	1200	575	364T	W639	364THFS19077	20:1@	\$7,677	E9	93.6	40.0	950	31.5	NP	A188
50	3600	575	326TS	W578	326TSHFS9005		\$6,584	E9	93.6	46.5	725	28.87		A187
	1800	575	326T	W581	326THFS19033	20:1@	\$5,720	E9	94.5	48.0	775	30.37		A187
	1200	575	365T	W640	365THFS19077	20:1@	\$8,816	E9	93.6	49.0	975	32.50	NP	A188
60	3600	575	364TS	W585	-----		\$7,969	E9	94.5	54.0	925	29.38		
	1800	575	364T	W588	364THFS19033	20:1@	\$7,549	E9	95.0	55.0	1000	31.50		A188
75	3600	575	365TS	W592	365TSHFSD9002	2:1	\$10,007	E9	94.5	67.0	1002	30.38		
	1800	575	365T	W595 ★	365THFS9044	20:1@	\$9,571	E9	95.4	69.0	1100	32.50		A188
100	1800	575	405T	W601 ★	405THFS9040	20:1@	\$11,824	E9	95.4	90.0	1330	37.12		A190
125	1800	575	444T	W607 ★	444THFS9040	20:1@	\$15,566	E9	95.4	113	1725	41.25		A192
150	1800	460	445TS	W611 ★	445TSHFN9026	20:1@	\$18,096	E9	95.8	172	2070	39.37		A194
	1800	575	445T	W613	445THFN9037	20:1@	\$18,096	E9	95.8	138	2070	43.19		A194
200	1800	575	445T	W642 ★	445THFN19034	20:1@	\$25,310	E9	96.2	181	2437	43.19		A194
	1200	575	447/449T	W630	449THFS19079	20:1@	\$27,957	E9	95.8	192	2927	51.69	RB	

Blue shaded areas are Cast Iron Frames ★ **Stock Model** * **Requires nameplate modification** Catalog numbers (Cat No.) highlighted in bold blue have efficiency levels that meet or exceed U.S. EPA and/or NRC Canadian standards.
 @ **Requires "R164" rework (reduces efficiency)**

Footnotes:

- d Will become build-up item when current stock is gone
- NP Does not meet NEMA Premium efficiency
- RB Roller Bearing on shaft end for belted load only

575 Volt: Hazardous Duty™ Explosion Proof, Three Phase Blue Chip® Severe Duty

Class I Group D (Group C as noted), Class II Groups F & G, Rigid Base



Applications: For use on fans, blowers, pumps, compressors, machine tools, and other equipment installed in hazardous environments as defined by the motor's explosion proof class and group rating. Consult the National Electrical Code and your local regulations for the proper selection of motors in hazardous locations.

- Features:**
- 10:1 Variable torque, see Inverter Duty column for constant torque (excludes 56 frames)
 - 1.15 Service Factor, except where noted
 - Class F insulation
 - Ball Bearings, except where noted
 - Normally closed thermostats on 143T Frames and larger
 - Automatic reset thermal protectors on 56 frame (cannot be used on VFD)
 - Meets temperature code T3B
 - Shaft slinger on drive end on 143T Frames and larger
 - See modification section for addition of C-Face Kits (254T-445T)
 - External surface treated with epoxy paint
 - See modification section for addition of C-Face Kits (254T-445T)
 - UL Listed File No. E12044
 - CSA Certified File Nos. LR21839 and LR47504
 - Two year warranty

IP54

HP	RPM	VOLTS	FRAME	GROUP C	CAT. NO.	MODEL NO.	CT SPEED RANGE	LIST PRICE	MULT. SYMB.	NOM. EFF.	F.L. AMPS	APPROX. WGT. LBS.	"C" DIM.	FOOT NOTES
1/4	1800	575	56	Y	G664	56T17E5314	-----	\$510	F1	71.0	0.43	25	11.97	N,17
1/3	1800	575	56	Y	G665	56T17E5315	-----	\$543	F1	74.0	0.50	25	11.97	N,17
1/2	1800	575	56	Y	G666★	56T17G5321	-----	\$573	F1	68.0	1.0	30	13.94	17
3/4	1800	575	56	Y	G667★	56T17G5322	-----	\$605	F1	75.5	1.2	30	13.94	17
1	1800	575	56	Y	G668★	56T17G5323	-----	\$611	F1	77.0	1.45	31	13.94	17
	1800	575	143T	N	U020★	143TTGN4030	10:1	\$643	E7	82.5	1.2	55	13.48	25,80
1 1/2	1800	575	145T	N	U021★	145TTGN4035	10:1	\$686	E7	84.0	1.8	75	14.73	25,80
2	1800	575	145T	N	U022★	145TTGN4040	10:1	\$726	E7	85.5	2.4	77	14.73	25,80
3	1800	575	182T	N	U023★	182TTGS4030	10:1	\$828	E7	87.5	3.4	98	16.19	25
5	1800	575	184T	N	U024★	184TTGS4030	10:1	\$908	E7	86.5	5.2	142	17.44	25
7 1/2	1800	575	213T	N	U025★	213TTGS4030	10:1	\$1,229	E7	89.5	8.0	200	19.66	25
10	1800	575	215T	N	U026★	215TTGS4030	2:1	\$1,433	E7	89.5	10.0	195	20.91	25
15	1800	575	254T	Y	U027★	254TTGN4030	10:1	\$1,836	E7	91.0	15.6	365	23.52	
20	1800	575	256T	Y	U028★	256TTGN4030	2:1	\$2,197	E7	91.0	20.0	400	25.27	
25	1800	575	284T	Y	U029	284TTGP4030	2:1	\$2,795	E7	92.4	24.8	450	26.26	
30	1800	575	286T	Y	U030	286TTGP4030	2:1	\$3,241	E7	92.4	29.6	496	27.76	
40	1800	575	324T	Y	U031	324TTGP4030	2:1	\$4,315	E7	93.0	40.0	520	28.97	17
50	1800	575	326T	Y	U032	326TTGP4030	2:1	\$5,253	E7	93.0	49.0	630	30.47	17
60	1800	575	364T	Y	U033	364TTGS4040	2:1	\$7,632	E7	93.6	58.0	1000	31.50	
75	1800	575	365T	Y	U034	365TTGS4040	2:1	\$9,390	E7	94.1	71	1094	32.50	
100	1800	575	405T	Y	U035	405TTGS4040	2:1	\$11,546	E7	94.5	91	1365	37.12	
125	1800	575	444T	Y	U036	444TTGS4042	2:1	\$14,912	E7	94.5	113	1808	41.25	
150	1800	575	445T	Y	U037	445TTGN4030	10:1	\$18,417	E7	95.0	138	2250	43.19	
200	1800	575	445T	Y	U038	445TTGN4045	2:1	\$20,837	E7	95.0	180	2384	43.19	RB

575 VOLT

Blue shaded areas are Cast Iron Frames

★ **Stock Model**

Catalog numbers (Cat No.) highlighted in bold blue have efficiency levels that meet or exceed U.S. EPA and/or NRC Canadian standards.

Footnotes:

- N Totally Enclosed, Non-Ventilated
- RB Roller bearing on shaft end for belted loads only
- 17 1.0 Service Factor
- 25 Motor will not accept C-Face kits
- 80 Rolled steel fan guard on 143T-145T

575 Volt: Hazardous Duty™ Explosion Proof, Three Phase

Class I Groups C & D, Class II Groups F & G, C-Face

Applications: For use on fans, blowers, pumps, compressors, machine tools, and other equipment installed in hazardous environments as defined by the motor's explosion proof class and group rating. Refer to the General Information section on explosion proof classifications. Consult the National Electrical Code and your local regulations for the proper selection of motors in hazardous locations.



- Features:**
- 1.0 Service Factor
 - Automatic reset thermal protectors on 56 Frame
 - Ball bearings
 - Meets temperature code T3B
 - Explosion proof conduit box included, shipped loose with 56 Frame
 - UL Listed File No. E12044
 - CSA Certified File No. LR47504

HP	RPM	VOLTS	FRAME	CAT. NO.	MODEL NO.	LIST PRICE	MULT. SYMB.	NOM. EFF.	F.L. AMPS	APPROX. WGT. LBS.	"C" DIM.	FOOT NOTES
1/4	1800	575	56C	G842	56T17E5312	\$476	F1	64.0	.43	34	11.97	N
1/3	1800	575	56C	G843 ★	56T17E5313	\$503	F1	74.0	.5	36	11.97	N
1/2	1800	575	56C	G844	56T17G5318	\$530	F1	68.0	1.0	37	13.94	
3/4	1800	575	56C	G845 ★	56T17G5319	\$559	F1	75.5	1.2	38	13.94	
1	1800	575	56C	G846	56T17G5320	\$566	F1	77.0	1.45	40	13.94	

★ Stock Model

575 Volt: Hazardous Duty™ Explosion Proof, Three Phase Blue Chip Severe Duty

Class I Group D, Class II Groups F & G, C-Face with Rigid Base

Applications: For use on fans, blowers, pumps, compressors, machine tools, and other equipment installed in hazardous environments as defined by the motor's explosion proof class and group rating. Refer to the General Information section on explosion proof classifications. Consult the National Electrical Code and your local regulations for the proper selection of motors in hazardous locations.



575 VOLT

- Features:**
- Class F insulation
 - 1.15 Service Factor
 - Normally closed thermostats
 - Ball bearings
 - Meets temperature code T3B
 - All cast iron construction
 - External surface treated with epoxy paint
 - UL Listed File No. E12044
 - CSA Certified File Nos. LR21839 and LR47504
 - Two year warranty

HP	RPM	VOLTS	FRAME	CAT. NO.	MODEL NO.	LIST PRICE	MULT. SYMB.	NOM. EFF.	F.L. AMPS	APPROX. WGT. LBS.	"C" DIM.	FOOT NOTES
3	1800	575	182TC	C368	182TTGS4036	\$917	E7	87.5	3.4	144	18.19	
5	1800	575	184TC	C369	184TTGS4037	\$999	E7	86.5	5.2	152	18.19	
7 1/2	1800	575	213TC	C370	213TTGS4036	\$1,358	E7	89.5	8.0	250	20.40	
10	1800	575	215TC	C371	215TTGS4049	\$1,562	E7	91.0	10.4	257	20.40	

Blue shaded areas are Cast Iron Frames

Catalog numbers (Cat No.) highlighted in bold blue have efficiency levels that meet or exceed U.S. EPA and/or NRC Canadian standards.

Footnotes:

- d Will become build-up item when current stock is gone
- N Totally Enclosed, Non-Ventilated

575 Volt: JM Close-Coupled Pump, Three Phase

Dripproof, C-Face and C-Face with Rigid Base



Applications: Close-coupled pumps where the pump impeller is mounted directly on the motor shaft in environments that are relatively clean and dry. For use outdoors an enclosure or drip cover may be required (see Accessories section).

- Features:**
- NEMA JM pump shaft dimensions
 - JMV frame includes drip cover for vertical mount without base
 - JM frame has rigid base, drip cover not included
 - Ball bearings, mechanically locked on shaft end
 - Continuous duty
 - 1.15 Service Factor
 - UL Recognized and CSA Certified
 - UL Listed for Fire Pump applications



Suitable for use on VFD per guidelines on page 14.

HP	RPM	VOLTS	FRAME	CAT. NO.	MODEL NO.	LIST PRICE	MULT. SYMB.	NOM. EFF.	F.L. AMPS	APPROX. WGT. LBS.	"C" DIM.	FOOT NOTES
1	1800	575	143JM	E116	143TTDR4047	\$329	S2	82.5	1.1	40	14.62	
	1800	575	143JMV	E119	143TTDR4046	\$367	S2	82.5	1.1	40	14.92	27
1 1/2	3600	575	143JM	E121	143TTDR4022	\$376	S2	82.5	1.9	28	13.12	
	3600	575	143JMV	E124	143TTDR4024	\$414	S2	82.5	1.9	28	12.92	27
	1800	575	145JM	E126	145TTDR4072	\$359	S2	84.0	1.8	41	14.62	
2	3600	575	145JM	E131	145TTDR4021	\$422	S2	84.0	2.2	32	13.12	
	3600	575	145JMV	E134	145TTDR4022	\$461	S2	84.0	2.2	32	13.42	27
	1800	575	145JM	E136	145TTDR4046	\$376	S2	84.0	2.3	45	15.12	
	1800	575	145JMV	E139	145TTDR4073	\$414	S2	84.0	2.3	43	15.42	27
3	3600	575	145JM	E141	145TTDR4121	\$472	S2	84.0	3.5	34	13.62	
	3600	575	145JMV	E144	145TTDR4025	\$511	S2	84.0	3.5	33	13.92	27
	1800	575	182JM	E146	182TTDR4146	\$438	S2	86.5	3.4	89	16.09	
	1800	575	182JMV	E149	182TTDR4147	\$516	S2	86.5	3.4	94	17.18	27
5	3600	575	182JM	E151	182TTDR4122	\$566	S2	86.5	4.8	79	16.09	
	3600	575	182JMV	E154	182TTDR4123	\$642	S2	86.5	4.8	73	16.68	27
	1800	575	184JM	E156	184TTDR4146	\$566	S2	87.5	5.0	89	17.59	13
	1800	575	184JMV	E159	184TTDR4147	\$642	S2	87.5	5.2	83	19.37	27
7 1/2	3600	575	184JM	E161	184TTDR4121	\$680	S2	87.5	7.2	105	17.35	
	3600	575	184JMV	E164	184TTDR4122	\$758	S2	87.5	7.2	106	17.68	27
	1800	575	213JM	E166	213TTDW4041	\$638	S2	88.5	7.6	120	19.16	
	1800	575	213JMV	E169	213TTDW4038	\$921	S2	88.5	7.7	142	20.44	27
10	3600	575	213JM	E171	213TTDW4010	\$874	S2	88.5	9.3	153	19.16	
	3600	575	213JMV	E174	213TTDW4007	\$976	S2	88.5	9.3	125	20.44	27
	1800	575	215JM	E176	215TTDW4042	\$970	S2	89.5	10.0	125	19.16	
	1800	575	215JMV	E179	215TTDW4032	\$1,072	S2	89.5	10.0	118	20.44	27
15	3600	575	215JM	E181	215TTDW4009	\$1,080	S2	90.2	13.6	159	20.41	13
	3600	575	215JMV	E184	215TTDW4007	\$1,183	S2	90.2	13.6	127	21.69	27
	1800	575	254JM	E186	254TTDX4344	\$1,312	S2	91.0	15.3	200	24.17	
	1800	575	254JMV	E189	-----	\$1,461	S2	91.0	15.4	205	25.45	27
20	3600	575	254JM	E192	254TTDX4019	\$1,363	S2	91.0	18.5	225	22.42	
	3600	575	254JMV	E195	254TTDX4024	\$1,512	S2	91.0	18.5	205	23.70	27
	1800	575	256JM	E198	256TTDX4326	\$1,583	S2	91.0	20.8	238	24.17	
	1800	575	256JMV	U101	256TTDX4047	\$1,730	S2	91.0	20.8	188	25.45	27
25	3600	575	256JM	U104	256TTDX4019	\$1,603	S2	91.0	23.2	195	24.17	
	1800	575	284JM	U107	284TTDP4037	\$1,914	S2	91.7	24.5	349	24.31	
30	3600	575	284JM	U110	284TTDP4023	\$1,954	S2	91.0	28.8	315	24.31	
	1800	575	286JM	U113	286TTDP4047	\$2,211	S2	92.4	28.8	364	25.81	
40	3600	575	286JM	U115	286TTDP4021	\$2,446	S2	91.7	38.0	386	25.81	
	1800	575	324JM	U117	324TTDP4349	\$2,888	S2	93.0	39.0	491	26.25	
50	3600	575	324JM	U119	324TTDP4018	\$3,129	S2	92.4	47.0	437	26.25	
	1800	575	326JM	U121	326TTDP4326	\$3,337	S2	93.0	47.5	504	27.75	

Blue shaded areas are Cast Iron Frames

Catalog numbers (Cat No.) highlighted in bold blue have efficiency levels that meet or exceed U.S. EPA and/or NRC Canadian standards.

Footnotes:

- 13 F1 Mounting only, cannot reassemble to F2
- 27 Drip Cover included

575 Volt: JM Close-Coupled Pump, Three Phase

Totally Enclosed, C-Face with Rigid Base

Applications: Close-coupled pumps where the pump impeller is mounted directly on the motor shaft in damp, dusty, or dirty environments.

- Features:**
- NEMA JM pump shaft dimensions
 - Ball bearings, mechanically locked on shaft end
 - Continuous duty
 - 1.15 Service Factor
 - UL Recognized and CSA Certified



Suitable for use on VFD per guidelines on page 14.

HP	RPM	VOLTS	FRAME	CAT. NO.	MODEL NO.	LIST PRICE	MULT. SYMB.	NOM. EFF.	F.L. AMPS	APPROX. WGT. LBS.	"C" DIM.	FOOT NOTES
1	1800	575	143JM	U302	143TTFR4046	\$408	S2	82.5	1.2	41	15.00	
1 1/2	3600	575	143JM	U305	143TTFR4021	\$480	S2	82.5	1.6	41	15.00	
	1800	575	145JM	U308	145TTFR4054	\$447	S2	84.0	1.8	45	16.50	
2	3600	575	145JM	U311	145TTFR4023	\$520	S2	84.0	2.1	39	15.50	
	1800	575	145JM	U314	145TTFR4128	\$468	S2	84.0	2.2	47	16.00	
3	3600	575	182JM	U317	182TTFR4021	\$596	S2	85.5	3.0	81	17.35	
	1800	575	182JM	U320	182TTFR4056	\$545	S2	87.5	3.4	79	18.35	
5	3600	575	184JM	U323	184TTFR4021	\$708	S2	87.5	4.9	82	18.35	
	1800	575	184JM	U326	184TTFR4056	\$708	S2	87.5	5.2	89	18.85	
7 1/2	3600	575	213JM	U331	213TTFW4010	\$883	S2	89.5	7.3	147	20.59	
	1800	575	213JM	U335	213TTFW4038	\$1,009	S2	89.5	8.0	225	20.59	
10	3600	575	215JM	U338	215TTFW4015	\$1,080	S2	89.5	9.6	158	22.09	
	1800	575	215JM	U341	215TTFW4036	\$1,207	S2	89.5	10.4	128	22.09	
15	3600	575	254JM	U346	254TTFL4010	\$1,350	S2	91.0	14.0	195	24.74	AL
	1800	575	254JM	U349	254TTFL4036	\$1,637	S2	91.0	16.0	220	24.74	AL
20	3600	575	256JM	U352	256TTFL4012	\$1,817	S2	90.2	18.8	185	26.49	AL
	1800	575	256JM	U355	256TTFL4038	\$1,987	S2	91.0	20.4	232	28.49	AL

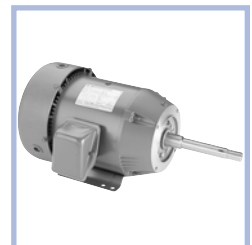
Catalog numbers (Cat No.) highlighted in bold blue have efficiency levels that meet or exceed U.S. EPCAC and/or NRCAN Canadian standards.

575 Volt: JP Close-Coupled Pump, Three Phase

Totally Enclosed, C-Face with Rigid Base

Applications: Close-coupled pumps where the pump impeller is mounted directly on the motor shaft in damp, dusty, or dirty environments.

- Features:**
- More ratings available, contact Marathon for price & availability
 - NEMA JP pump shaft dimensions
 - Ball bearings, mechanically locked on shaft end
 - Continuous duty
 - 1.15 Service Factor
 - UL Recognized and CSA Certified



Suitable for use on VFD per guidelines on page 14.

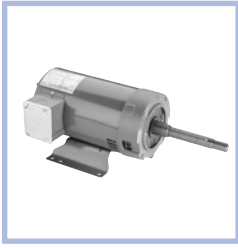
HP	RPM	VOLTS	FRAME	CAT. NO.	MODEL NO.	LIST PRICE	MULT. SYMB.	NOM. EFF.	F.L. AMPS	APPROX. WGT. LBS.	"C" DIM.	FOOT NOTES
7 1/2	3600	575	213JP	U332	213TTFW4012	\$883	S2	89.5	7.4	85	25.96	
15	3600	575	254JP	U356	254TTFL4011	\$1,350	S2	91.0	14.0	259	27.60	AL

Catalog numbers (Cat No.) highlighted in bold blue have efficiency levels that meet or exceed U.S. EPCAC and/or NRCAN Canadian standards.

Footnotes:
AL Aluminum frame construction

575 Volt: JP Close-Coupled Pump, Three Phase

Dripproof, C-Face/Vertical and C-Face with Rigid Base



Applications: Close-coupled pumps where the pump impeller is mounted directly on the motor shaft in environments that are relatively clean and dry. For use outdoors an enclosure or drip cover may be required (see Accessories section).

- Features:**
- NEMA JP pump shaft dimensions
 - JPV frame includes drip cover for vertical mount without base
 - JP frame has rigid base, drip cover not included
 - Ball bearings, mechanically locked on shaft end
 - Continuous duty
 - 1.15 Service Factor
 - UL Recognized and CSA Certified
 - UL Listed for Fire Pump applications



Suitable for use on VFD per guidelines on page 14.

HP	RPM	VOLTS	FRAME	CAT. NO.	MODEL NO.	LIST PRICE	MULT. SYMB.	NOM. EFF.	F.L. AMPS	APPROX. WGT. LBS.	"C" DIM.	FOOT NOTES
1	1800	575	143JP	U124	143TTDR4048	\$329	S2	82.5	1.1	42	17.68	
	1800	575	143JPV	U127	143TTDR4049	\$367	S2	82.5	1.1	41	17.98	27
1 1/2	3600	575	143JP	U130	143TTDR4023	\$376	S2	82.5	1.9	40	16.18	
	3600	575	143JPV	U133	143TTDR4025	\$414	S2	82.5	1.9	41	15.98	27
	1800	575	145JP	U136	145TTDR4048	\$359	S2	84.0	1.8	42	17.68	
	1800	575	145JPV	U139	145TTDR4049	\$399	S2	84.0	1.8	45	17.98	27
2	3600	575	145JP	U142	145TTDR4023	\$422	S2	84.0	2.2	43	16.18	
	3600	575	145JPV	U145	145TTDR4024	\$461	S2	84.0	2.2	44	16.48	27
	1800	575	145JP	U148	145TTDR4074	\$376	S2	84.0	2.3	45	18.18	
	1800	575	145JPV	U151	145TTDR4075	\$414	S2	84.0	2.3	44	18.48	27
3	3600	575	145JP	U154	145TTDR4123	\$472	S2	84.0	3.5	47	16.68	
	3600	575	145JPV	U157	145TTDR4124	\$511	S2	84.0	3.5	48	16.98	27
	1800	575	182JP	U160	182TTDR4148	\$438	S2	86.5	3.4	93	19.66	
	1800	575	182JPV	U163	182TTDR4149	\$516	S2	86.5	3.4	94	19.91	27
5	3600	575	182JP	U166	182TTDR4124	\$566	S2	86.5	4.8	56	19.16	13
	3600	575	182JPV	U169	182TTDR4125	\$642	S2	86.5	4.8	69	19.84	27
	1800	575	184JP	U172	184TTDR4148	\$566	S2	87.5	5.3	69	20.16	13
	1800	575	184JPV	U175	184TTDR4149	\$642	S2	87.5	5.0	116	20.84	27
7 1/2	3600	575	184JP	U178	184TTDR4123	\$680	S2	87.5	7.2	105	20.16	
	3600	575	184JPV	U181	184TTDR4124	\$758	S2	87.5	7.2	106	20.32	27
	1800	575	213JP	U184	213TTDW4039	\$818	S2	88.5	7.6	140	23.03	
	1800	575	213JPV	U187	213TTDW4052	\$921	S2	88.5	7.7	142	24.31	27
10	3600	575	213JP	U190	213TTDW4012	\$874	S2	88.5	9.4	140	23.03	
	3600	575	213JPV	U193	213TTDW4014	\$976	S2	88.5	9.3	130	24.31	27
	1800	575	215JP	U196	215TTDW4051	\$970	S2	89.5	10.0	135	23.03	
	1800	575	215JPV	U199	215TTDW4052	\$1,072	S2	89.0	10.0	150	24.31	27
15	3600	575	215JP	U202	215TTDW4012	\$1,080	S2	90.2	13.6	168	24.28	
	3600	575	215JPV	U205	215TTDW4014	\$1,183	S2	90.2	13.6	215	25.56	27
	1800	575	254JP	U208	254TTDX4340	\$1,312	S2	91.0	15.4	260	27.04	
	1800	575	254JPV	U211	254TTDX4341	\$1,461	S2	91.0	15.4	220	28.33	27
20	3600	575	254JP	U214	254TTDX4008	\$1,363	S2	91.0	18.4	203	25.29	
	3600	575	254JPV	U217	254TTDX4016	\$1,512	S2	91.0	18.5	200	26.58	27
	1800	575	256JP	U220	256TTDX4328	\$1,583	S2	91.0	20.8	236	27.04	
	1800	575	256JPV	U223	256TTDX4059	\$1,730	S2	91.0	20.8	220	28.33	27
25	3600	575	256JP	U226	256TTDX4023	\$1,603	S2	91.0	23.2	255	27.04	
30	3600	575	284JP	U232	284TTDP4012	\$1,954	S2	91.0	29.0	428	27.18	
	1800	575	286JP	U235	286TTDP4049	\$2,211	S2	92.4	28.8	364	28.68	
40	3600	575	286JP	U237	286TTDP4024	\$2,446	S2	91.7	38.0	327	28.68	
	1800	575	324JP	U239	324TTDP4033	\$2,889	S2	93.0	39.0	491	29.12	
50	3600	575	324JP	U241	324TTDP4011	\$3,129	S2	92.4	47.0	437	29.12	
	1800	575	326JP	U243	326TTDP4032	\$3,337	S2	93.0	49.0	490	30.62	

Blue shaded areas are Cast Iron Frames

Catalog numbers (Cat No.) highlighted in bold blue have efficiency levels that meet or exceed U.S. EPA and/or NRC Canadian standards.

Footnotes:

- 13 F1 Mounting Only, Cannot reassemble to F2
- 27 Drip Cover included

575 Volt: Condenser Fan, Three Phase

56 Frame, Open Air Over, Belly Band/Resilient Mount

Applications: Commercial condenser fans, may be installed outdoors. These motors need to be mounted within the airflow of the fan for proper cooling. Used on Trane, Carrier, Climtrol, & York units, 5 tons and larger.

Features:

- **60 degrees C ambient**
- Automatic reset thermal protector
- Enclosed shaft end bracket, vented frame
- Double sealed ball bearings
- Shaft slinger
- 5/8" dia. X 5" long shaft with flat and keyway
- Patented VCD™ - Voltage Change Device
- Four locating screws 90° apart, 3.33" from outer edge of shaft slinger
- Threaded lead exit
- Hubs on both ends will accept resilient base kits, see Accessories section, (except X524 and X526-horizontal only)
- UL Recognized and CSA Certified



HP	RPM	VOLTS	FRAME	CAT. NO.	MODEL NO.	LIST PRICE	MULT. SYMB.	F.L. AMPS	APPROX. WGT. LBS.	BODY LENGTH	FOOT NOTES
1	1140	575	56Y	X522 *	56T11O5308	\$397	F1	1.7	30	10	VC
	850	575	56Y	X527 *	56T8O5304	\$522	F1	2.1	54	12	VC
1 1/2	1140	575	56Y	X524 *	56T11O5307	\$434	F1	2.2	37	11	VC,73
2	1140	575	56Y	X526 *	56T11O5309	\$462	F1	2.7	43	11 5/8	VC,73

★ Stock Model

575 Volt: Fan and Blower, Three Phase

Dripproof, Resilient Base

Applications: Commercial and industrial fans and blowers that require moderate starting torque and are used in relatively clean and dry environments where three phase power is available.

Features:

- Ball bearings
- Heavy gauge steel frame and resilient, "cradle" style base
- Automatic reset thermal protector, as noted
- NEMA Service Factors
- UL Recognized and CSA Certified



575 VOLT

HP	RPM	VOLTS	FRAME	OVER LOAD	CAT. NO.	MODEL NO.	LIST PRICE	MULT. SYMB.	SERVICE FACTOR	F.L. AMPS	APPROX. WGT. LBS.	"C" DIM.	FOOT NOTES
1/3	1800	575	56	NONE	G964	56T17D2117	\$216	F1	1.35	0.64	17	9.97	
1/2	1800	575	56	NONE	G961*	56T17D2118	\$243	F1	1.25	0.9	18	10.47	
3/4	1800	575	56	NONE	G962*	56T17D2119	\$272	F1	1.25	1.1	20	10.97	
1	1800	575	56H	NONE	G963*	56T17D2120	\$279	F1	1.15	1.4	24	11.47	5
1 1/2	1800	575	56	AUTO	G965	56T17D5357	\$351	F1	1.15	1.9	29	11.35	
2	1800	575	56H	AUTO	G967	56T17D5385	\$382	F1	1.15	2.5	36	12.35	5

★ Stock Model

Footnotes:

- VC Voltage Change Device feature for quick voltage changes
- 5 56H, 143T, and 145T Combination Base with 12 mounting holes
- 73 No hubs

575 Volt: Globetrotter IEC (Metric) Frame, Three Phase

Totally Enclosed, B3 Mounting, Rigid Base



Applications: For use on fans, pumps, compressors, conveyors, and other equipment requiring IEC dimensions and electrical standards. The Globetrotter is not only designed to International standards but meets NEMA performance and efficiency standards making it suitable for requirements worldwide.

- Features:**
- Nameplated 60/50 hertz at same HP/KW
 - Class F insulation
 - IP55 weatherproof enclosure
 - Class B rise @ nameplate KW
 - Meets EFF2 European, EPAct and NRCAN Canadian efficiencies, except as noted
 - Top Mounted/Oversized gasketed terminal box
 - Meets IEEE45, IEC60092 & USCG
 - 1.15 Service Factor on 60 Hz
 - Design "N" with NEMA "B" Torques
 - Terminal Blocks, Stud Type, Zero Creepage
 - Kits for B3/B5 & B3/B14 mounting available
 - Meets IEC 34 electrical standards
 - Meets IEC 72 dimensions and tolerances
 - CE Marked



**CONSULT
MARATHON ELECTRIC
FOR SPECIAL IEC
MOTORS**



HP-KW	RPM @ 60 HZ	60 HZ VOLTS	IEC FRAME	CAT. NO.	MODEL NO.	CT SPEED RANGE	LIST PRICE	MULT. SYMB.	NOM. EFF.	60 HZ F.L. AMPS	APPROX. WGT. LBS.	IEC DIM (IN.)	FOOT NOTES
1/4-.18	3600	575	63	R400★	63T34FH5303	20:1	\$175	F4	72.0	0.3	11	8.54	d,AL,DS
	1800	575	63	R401★	63T17FH5327	20:1	\$182	F4	68.0	0.4	12	8.54	AL,DS
1/3-.25	3600	575	63	R403★	63T34FH5304	20:1	\$205	F4	72.0	0.4	12	8.54	AL,DS
	1800	575	71	R404★	71T17FH5330	20:1	\$213	F4	68.0	0.6	14	9.45	d,AL,DS
1/2-.37	3600	575	71	R406★	71T34FH5303	20:1	\$218	F4	74.0	0.7	14	9.45	d,AL,DS
	1800	575	71	R407★	71T17FH5331	20:1	\$222	F4	74.0	0.7	16	9.45	AL,DS
3/4-.55	3600	575	71	R409★	71T34FH5304	20:1	\$229	F4	74.0	0.9	16	9.45	AL,DS
	1800	575	80	R410★	80T17FH5330	20:1	\$241	F4	74.0	1.0	22	11.10	d,AL,DS
1-.75	3600	575	80	R412★	80T34FH5305	20:1	\$260	F4	75.5	1.1	24	11.10	AL,DS
	1800	575	80	R413★	80T17FH5331	20:1	\$264	F4	80.0	1.4	28	11.10	d,AL,DS
1 1/2-1.1	3600	575	80	R415★	80T34FH5303	20:1	\$287	F4	84.0	1.6	29	11.10	AL,DS
	1800	575	90S	R416★	90ST17FH5327	20:1	\$295	F4	85.5	1.8	39	12.60	AL,DS
2-1.5	3600	575	90S	R418★	90ST34FH5302	20:1	\$307	F4	85.5	2.1	36	12.60	AL,DS
	1800	575	90L	R419★	90LT17FH5327	20:1	\$317	F4	84.0	2.4	39	12.60	AL,DS
3-2.2	3600	575	90L	R421★	90LT34FH5302	20:1	\$442	F4	86.5	2.9	42	12.60	AL,DS
	1800	575	100L	R422	100LTFC4527	20:1	\$480	F4	87.5	3.5	88	14.96	DS
4-3	3600	575	100L	R451	100LTFC4502	20:1	\$512	F4	87.5	4.0	82	14.96	DS
	1800	575	100L	R452	100LTFC4537	20:1	\$521	F4	88.5	4.2	95	14.96	DS
5 1/2-4	3600	575	112M	R424	112MTFC4512	20:1	\$659	F4	87.5	5.0	117	15.75	DS
	1800	575	112M	R425	112MTFC4537	20:1	\$635	F4	88.5	5.4	117	15.75	DS
7 1/2-5.5	3600	575	132S	R427	132STFC4503	20:1	\$826	F4	90.1	7.2	170	18.70	DS
	1800	575	132S	R428	132STFC4527	20:1	\$826	F4	89.5	7.9	167	18.70	DS
10-7.5	3600	575	132S	R430	132STFC4504	20:1	\$884	F4	91.0	9.6	181	18.70	DS
	1800	575	132M	R431	132MTFC4537	2:1	\$980	F4	89.5	10.5	192	20.28	DS

Blue shaded areas are Cast Iron Frames ★ Stock Model

Catalog numbers (Cat No.) highlighted in bold blue have efficiency levels that meet or exceed U.S. EPAct and/or NRCAN Canadian standards.

Footnotes:

- d Will become build-up item when current stock is gone
- AL Aluminum Construction
- DS Sourced

575 Volt: Kiln Duty, Premium Efficiency Blue Chip Severe Duty Totally Enclosed Air Over

Three Phase, Rigid Base

Applications: Fans found in kilns and other high ambient environments where long life and premium efficiency are desired. These TEAO motors must be mounted within the airstream for proper cooling. Suitable for use on variable frequency drives.



- Features:**
- Blue Chip quality, 100% cast iron construction for rigidity and reduced vibration
 - Internal and external epoxy paint
 - CR²⁰⁰ Corona resistant magnet wire
 - Class H insulation system
 - Normally closed thermostats
 - Heat stabilized ball bearings and high temperature grease
 - Suitable for inverter use for 20:1 Variable Torque at 1.0 S.F.
 - Suitable for 90°C ambient or 1.15 S.F. at 100°C ambient at 1.0 S.F.
 - Extended grease tubes, regreasable in service
 - 8 Foot Leads
 - UL Recognized and CSA Certified

HP	RPM	VOLTS	FRAME	CAT. NO.	MODEL NO.	LIST PRICE	MULT. SYMB.	NOM. EFF.	F.L. AMPS	APPROX. WGT. LBS.	(C) DIM.	FOOT NOTES
1	1800	575	143T	S550	----	\$1,129	E9	85.5	1.2	65	10.43	
	1200	575	145T	S551	----	\$1,218	E9	80.0	1.4	59	11.43	
	900	575	182T	S552	----	\$1,699	E9	74.0	1.8	100	12.71	
2	1800	575	145T	S553	145TTN18532	\$1,218	E9	85.5	2.3	68	11.43	
	1200	575	184T	S554	184TTT18578	\$1,684	E9	87.5	2.4	115	13.71	
	900	575	213T	S555	----	\$1,788	E9	84.0	3.0	170	15.69	
3	1800	575	182T	S556	----	\$1,646	E9	89.5	3.2	110	13.71	
	1200	575	213T	S557	213TTT17078	\$1,788	E9	89.5	3.5	175	15.69	
	900	575	215T	S558	215TTT18604	\$2,059	E9	86.5	4.0	200	17.18	
5	1800	575	184T	S559	----	\$1,684	E9	90.2	5.0	130	13.71	
	1200	575	215T	S560 *	215TTT17078	\$2,059	E9	88.5	5.5	200	17.19	
	900	575	254T	S561	----	\$2,211	E9	88.5	6.0	375	20.60	
7 1/2	1800	575	213T	S562	----	\$1,982	E9	91.7	7.7	200	15.69	
	1200	575	254T	S563	----	\$3,025	E9	90.2	7.9	375	20.60	
	900	575	256T	S564	256TTTNA18601	\$2,828	E9	88.5	8.6	425	22.35	
10	1800	575	215T	S565	----	\$2,059	E9	91.7	10.0	225	17.19	
	1200	575	256T	S566 *	256TTTNA18577	\$2,895	E9	91.0	10.2	425	22.35	d
	900	575	284T	S567 *	284TTTNA17101	\$3,001	E9	88.5	12.2	475	23.44	
15	1800	575	254T	S568	----	\$2,762	E9	92.4	14.4	425	20.60	
	1200	575	284T	S569	284TTTNA18577	\$3,467	E9	91.7	16.4	475	23.44	
	900	575	286T	S570	----	\$3,797	E9	90.2	17.6	550	24.94	
20	1800	575	256T	S571	----	\$2,382	E9	93.0	19.3	450	22.35	
	1200	575	286T	S572	----	\$3,797	E9	91.7	21.4	550	24.94	
	900	575	324T	S573	----	\$4,640	E9	90.2	23.5	685	27.50	
25	1800	575	284T	S574	----	\$3,001	E9	93.6	24.8	500	23.44	
	1200	575	324T	S575	----	\$4,770	E9	92.4	26.5	675	26.00	
	900	575	326T	S576	----	\$5,051	E9	90.2	29.5	750	27.50	
30	1800	575	286T	S577	----	\$3,797	E9	94.1	29.2	525	24.94	
	1200	575	326T	S578	----	\$5,051	E9	93.0	31.5	725	27.50	

Blue shaded areas are Cast Iron Frames

* Stock Model

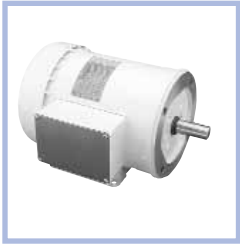
Footnotes:

d Will become build-up item when current stock is gone

575 VOLT

575 Volt: PowerWash™ XT Washdown Duty, Three Phase

White Epoxy, Totally Enclosed, C-Face with Rigid Base



Applications: Gear reducers, pumps, fans, blowers, conveyors, and other machinery found in food processing, dairies, slaughter houses, beverage plants, car washes, and other high humidity or wet environments or where motor is subject to high pressure washdowns.

- Features:**
- 10:1 Variable torque, Constant torque, speed range as listed below
 - MAX GUARD® Class F insulation system
 - 1.15 Service Factor on sinewave, 1.0 Service Factor on IBGT Power
 - Double sealed ball bearings
 - 303 Stainless steel shaft with spring loaded contact seals in each endshield (Drive end only on TENV motors)
 - Stainless steel conduit box cover, nameplate, fan guard (TEFC only) and hardware
 - Cast oversized conduit box with high temperature nitrile gaskets and threaded entrance
 - Plugged drain holes in each endshield for all angle mounting
 - Internal corrosion resistant coatings on frame, base, endshields, rotor and stator
 - USDA-approved, white epoxy RUST-OLEUM® paint
 - UL Recognized, CSA Certified and CE Marked



IP55



HP	RPM	VOLTS	FRAME	CAT. NO.	MODEL NO.	CT SPEED RANGE*	LIST PRICE	MULT. SYMB.	NOM. EFF.	F.L. AMPS	APPROX. WGT. LBS.	"C" DIM.	FOOT NOTES
1/4	1800	575	56C	N620★	56T17W5333	10:1	\$410	F3	68.0	0.44	20	10.69	d,V
1/3	1800	575	56C	N621	56T17W5335	10:1	\$450	F3	72.0	0.68	23	10.69	V
1/2	1800	575	56C	N622★	56T17V5337	1000:1	\$458	F3	78.5	0.72	25	10.08	d,N
3/4	1800	575	56C	N623	56T17W5339	10:1	\$530	F3	77.0	1.12	27	11.19	V
1	1800	575	56C	N627	56T17W5341	10:1	\$553	F3	77.0	1.5	30	11.69	V

★ Stock Model

* Requires nameplate modification

More 575 Volt Washdown ratings are available on a build-up basis, call Marathon for price and availability.

575 VOLT

Footnotes:

- d Will become build-up item when current stock is gone
- N Totally Enclosed, Non-Ventilated
- V Suitable for 10:1 CT 60 minute duty, otherwise 2:1 CT

575 Volt: microMAX™ AC Inverter Duty Motor 1000:1 Constant Torque (TENV), 20:1 Constant Torque (TEFC)

C-Face with Rigid Base and C-Face with Removable Rigid Base

Applications: Designed for direct replacement of PMDC or any other variable speed application where up to a 1000:1 constant torque speed range is required. Typical uses include: machine tools, conveyors, packaging machines, batching machines, and printing equipment.



- Features:**
- Replaces 90 volt and 180 volt PMDC motors (when used with AC variable frequency drives)
 - Constant torque operation from 0 to base speed (TENV ratings)
 - Constant torque operation from 1/20 speed to base speed (TEFC ratings)
 - Constant horsepower to twice base speed (RPM)
 - Class H insulation with CR²⁰⁰ magnet wire
 - Removable base for C-Face footless mounting (as noted)
 - Continuous duty at 40°C ambient
 - "Quick Connect" terminal board, as noted (TENV)
 - Top mounted conduit box with pigtail leads (TEFC and 1.5 HP TENV)
 - Eliminates brush and commutator maintenance
 - UL Recognized, CSA Certified, and CE Marked
 - Three year warranty

HP	RPM	VOLTS	ENCL.	FRAME	CAT. NO.	MODEL NO.	LIST PRICE	MULT. SYMB.	F.L. AMPS	APPROX. WGT. LBS.	"C" DIM.	FOOT NOTES
1/2	1800	575	TENV	56C	Y361	56H17T2019	\$301	E3	0.7	20	10.55	Q
3/4	1800	575	TEFC	56C	Y363	56H17F2015	\$372	E3	1.1	23	11.19	
1	1800	575	TEFC	56C	Y365★	56H17F2019	\$419	E3	1.3	28	12.44	
1 1/2	1800	575	TENV	145TC	Y367	145THTR5330	\$521	E3	1.9	48	13.48	6
2	1800	575	TEFC	145TC	Y369★	145THFR5330	\$691	E3	2.3	51	14.87	6
3	1800	575	TEFC	182/145TC	Y371	182THFR5330	\$815	E3	3.4	52	14.87	86,88
	1800	575	TEFC	182TC	Y270	182THFR7730	\$850	E3	3.4	86	16.19	6
5	1800	575	TEFC	184TC	Y373	184THFR7736	\$967	E3	5.4	88	16.69	6
7 1/2	1800	575	TEFC	213TC	Y995	213THFW7736	\$1,237	E3	8.5	98	20.97	6
10	1800	575	TEFC	215TC	Y997	215THFW7736	\$1,582	E3	11.1	125	22.22	6

★ Stock Model

575 VOLT

575 Volt: microMAX™ AC Inverter Duty Motor 1000:1 Constant Torque (TENV), 20:1 Constant Torque (TEFC)

C-Face

HP	RPM	VOLTS	ENCL.	FRAME	CAT. NO.	MODEL NO.	LIST PRICE	MULT. SYMB.	F.L. AMPS	APPROX. WGT. LBS.	"C" DIM.	FOOT NOTES
1/2	1800	575	TENV	56C	Y375	56H17T2020	\$301	E3	0.7	19	10.55	Q
3/4	1800	575	TEFC	56C	Y377	56H17F2016	\$372	E3	1.1	21	11.19	
1	1800	575	TEFC	56C	Y379★	56H17F2020	\$419	E3	1.3	27	12.44	d

★ Stock Model

Footnotes:

- d Will become build-up item when current stock is gone
- Q "Quick Connect" terminal board
- 6 Bolt-on, removable base for footless mounting option
- 86 2:1 constant torque speed range
- 88 182T base and shaft height, 145TC mounting face and shaft dimensions

575 Volt: Black Max® Vector Duty, 1000:1 Constant Torque

Totally Enclosed Non-Ventilated, C-Face with Rigid Base



Applications: Designed for inverter duty or vector duty applications where 1000:1 constant torque speed range is required. Typical uses include: material handling, machine tools, conveyors, crane and hoist, metal processing, test stands, pumps, compressors, textile processing, and other industrial machinery installed in dusty or dirty environments.

- Features:**
- MAX GUARD® Class F insulation system
 - Constant Torque operation from 0 to base speed on Vector Drive
 - Constant Horsepower operation, up to twice base RPM
 - Continuous duty at 40°C ambient
 - Optimized for operation with IGBT inverter (NEMA Design A)
 - Normally closed thermostats (one per phase, Class F)
 - Removable rigid base (as noted)
 - Ball bearings
 - Field reversible to F2 (except where noted)
 - Encoder and brake provisions included on opposite drive end (maximum 10 lb-ft brake, see Modifications and /or Accessory Kits sections)
 - UL Recognized, CSA Certified, and CE Marked
 - Three year warranty

HP	RPM	VOLTS	FRAME	CAT. NO.	MODEL NO.	LIST PRICE	MULT. SYMB.	F.L. AMPS	APPROX. WGT. LBS.	"C" DIM.	FOOT NOTES
1/2	1800	575	56C	Y555 ★	56H17T5311	\$437	E3	0.6	28	13.48	S,6,13
1	1800	575	56C	Y556 ★	56H17T5312	\$521	E3	1.2	41	14.98	S,6,13
2	1800	575	145TC	Y557 ★	145THTN6060	\$898	E3	2.4	72	14.68	
3	1800	575	182TC	Y558 ★	182THTL7736	\$1,113	E3	3.4	96	17.39	AL
5	1800	575	184TC	Y559 ★	184THTL7736	\$1,329	E3	5.6	98	18.94	AL
7 1/2	1800	575	213TC	Y560 ★	213THTL7736	\$1,745	E3	8.4	146	20.54	AL
10	1800	575	215TC	Y561 ★	215THTL7736	\$2,087	E3	10.8	159	23.04	AL
15	1800	575	254TC	Y562 ★	254THTL5736	\$2,484	E3	16.0	250	26.87	I,AL
20	1800	575	256TC	Y563 ★	256THTNA7036	\$3,626	E3	20.8	300	27.13	I
25	1800	575	284TC	Y567 ★	284THTNA7036	\$3,944	E3	24.8	495	27.08	d,I
30	1800	575	286TC	Y394 ★	286THTNA7036	\$4,447	E3	32.0	575	28.58	d

★ Stock Model

Footnotes:

- d Will become build-up item when current stock is gone
- AL Aluminum Frame Construction
- I Reduced HP @ 120 HZ
- S Steel Frame Construction
- 6 Bolt-on, removable base for footless mounting option
- 13 F1 Mounting Only, Cannot reassemble to F2