

MODIFIED STANDARD V*S DRIVES

SP600 Drives: 575 VAC



SP Models:⁽³⁾

Analog Input #1 (0-10 VDC or 4-20 ma)

Analog Input #2 (+ 10VDC, 0-10 VDC or 4-20 ma)

Analog Output (0-10 VDC)

575 VAC Base Drive Model Number	6SP501-2P7CTNN	6SP501-3P9CTNN	6SP501-6P1CTNN	6SP501-9P0CTNN	6SP501-011CTNN	6SP501-017CTNN	6SP501-022CTNN	6SP501-027CTNN	6SP501-032CTNN	6SP501-041CTNN	6SP501-052CTNN
HP Rating (110% Overload)	2	3	5	7.5	10	15	20	25	30	40	50
HP Rating (150% Overload)	1.5	2	3	5	7.5	10	15	20	25	30	40
FLA @ 4 kHz	2.7	3.9	6.1	9	11	17	22	27	32	40	50
Base Drive List	\$1,544	\$1,596	\$1,685	\$1,903	\$2,246	\$2,787	\$3,328	\$4,207	\$5,268	\$6,214	\$7,748
Enclosure Options											
NEMA 1 Cabinet	3,350	3,350	3,350	3,650	3,650	3,650	3,650	3,650	3,950	3,950	3,950
NEMA 4/12 Cabinet ⁽⁴⁾	3,500	3,500	3,500	3,800	3,800	7,800 ⁽²⁾	7,800 ⁽²⁾	7,800 ⁽²⁾	7,800 ⁽²⁾	8,200 ⁽²⁾	8,600 ⁽²⁾
Input Protection & Disconnect Options											
Input Fuses Only	158	158	158	158	158	178	178	245	317	317	611
Fused Disconnect Switch & Door Handle	403	403	403	403	403	423	423	505	757	757	1,208
Circuit Breaker Only	752	752	752	752	752	752	865	865	865	865	911
Circuit Breaker Disconnect & Door Handle	1,018	1,018	1,018	1,018	1,018	1,018	1,131	1,131	1,131	1,131	1,177
Door Mounted Operator Devices											
Door Mounted OIM	600	600	600	600	600	600	600	600	600	600	600
Maintained Start/Stop Switch	106	106	106	106	106	106	106	106	106	106	106
Momentary Start/Stop Pushbuttons	172	172	172	172	172	172	172	172	172	172	172
E-Stop Pushbutton (Mushroom Head)	120	120	120	120	120	120	120	120	120	120	120
Jog Pushbutton	86	86	86	86	86	86	86	86	86	86	86
2 or 3 Position Selection Switch	120	120	120	120	120	120	120	120	120	120	120
Pilot Light ⁽¹⁾	86	86	86	86	86	86	86	86	86	86	86
Contactors, Overloads, Starters, Control Transformers & Line Reactors											
Input Contactor ⁽¹⁾	342	342	342	342	467	467	467	467	467	467	467
Output Contactor ⁽¹⁾	342	342	342	342	467	467	467	467	467	467	467
Drive Bypass Control ⁽¹⁾	932	932	932	932	1,185	1,185	1,185	1,185	1,185	1,185	1,286
Motor Overload Relay	181	181	181	181	181	181	181	181	181	181	376
Blower Motor Starter ⁽¹⁾	408	408	408	408	408	408	408	408	408	408	408
Control Transformer: 575:120 VAC, 250VA	375	375	375	375	375	375	375	375	375	375	375
3% Impedance Input Line Reactor	323	323	323	384	437	461	461	496	511	640	774
Dynamic Braking - Transistor + Resistor											
6-10% Duty Braking	Contact Factory										
>10% Duty Braking	Contact Factory										

⁽¹⁾ Requires Control Transformer option

⁽²⁾ Usually includes a cooling device and control transformer

⁽³⁾ SB models available 20-25 HP and up at additional cost

⁽⁴⁾ Flange style units are available in some ratings, which may reduce the enclosure size and/or the cost. Contact the factory for pricing

Discount: MS-1AC

MODIFIED STANDARD DRIVES

SP600 Drives: 575 VAC

SB Models:

Analog Input #1 (0 + / - 10 VDC or 4-20 ma)

Analog Input #2 (+ 10VDC, 0-10 VDC or 4-20 ma)

Analog Output (0 + / - 10 VDC or 4-20 ma)

575 Base Drive Model Number	6SB501-062CNNNA	6SB501-077CNNNA	6SB501-099CNNNA	6SB501-125CNNNA	6SB501-144CNNNA
HP Rating (110% Overload)	60	75	100	125	150
HP Rating (150% Overload)	50	60	75	100	125
FLA @ 4 kHz	62	77	99	125	144
Base Drive List	\$9,532	\$10,977	\$13,052	\$14,565	\$15,954
Enclosure Options					
NEMA 1 Cabinet	3,950	5,525	6,050 ⁽²⁾	6,050 ⁽²⁾	6,050 ⁽²⁾
NEMA 1A Force Vent with Fan & Filter	692	692	Std.	Std.	Std.
NEMA 4/12 Cabinet(2)	9,500	14,475	14,475	CF	CF
Input Protection & Disconnect Options					
Input Fuses Only	611	611	1,054	1,102	1,102
Fused Disconnect Switch & Door Handle	1,208	1,208	2,114	2,162	2,162
Circuit Breaker Only	911	911	1,074	1,074	1,363
Circuit Breaker Disconnect & Door Handle	1,177	1,177	1,426	1,426	1,715
Door Mounted Operator Devices					
Door Mounted OIM	600	600	600	600	600
Maintained Start/Stop Switch	106	106	106	106	106
Momentary Start/Stop Pushbuttons	172	172	172	172	172
E-Stop Pushbutton (Mushroom Head)	120	120	120	120	120
Jog Pushbutton	86	86	86	86	86
2 or 3 Position Selection Switch	120	120	120	120	120
Pilot Light(1)	86	86	86	86	86
Contactors, Overloads, Starters, Control Transformers & Line Reactors					
Input Contactor ⁽¹⁾	1,260	1,260	1,260	1,951	1,951
Output Contactor ⁽¹⁾	1,260	1,260	1,260	1,951	1,951
Drive Bypass Control ⁽¹⁾	3,220	3,220	3,220	4,080	4,080
Motor Overload Relay	376	376	376	430	430
Blower Motor Starter ⁽¹⁾	408	408	408	408	408
Control Transformer: 575:120 VAC, 250VA	375	375	375	375	375
3% Impedance Input Line Reactor	900	1,114	1,292	1,480	2,101
Dynamic Braking - Transistor + Resistor					
6-10% Duty Braking	Contact Factory				
>10% Duty Braking	Contact Factory				

⁽¹⁾ Requires Control Transformer option

⁽²⁾ Usually includes a cooling device and control transformer

⁽³⁾ Add to NEMA 1 Option

CF = Contact Factory

Discount: MS-1AC

Communication Modules - Network Options

Network connectivity can be achieved by adding one of the options listed below:

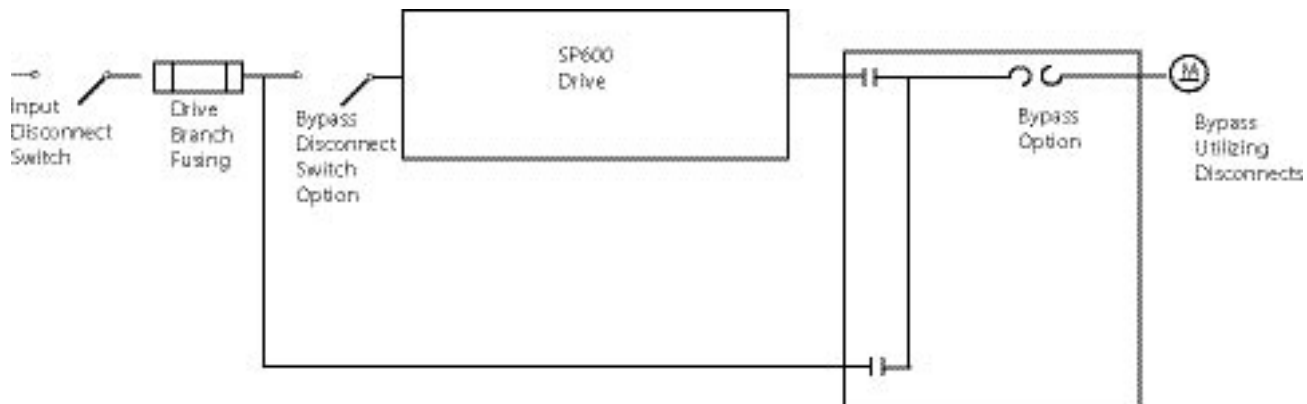
Model Number	Description	List
RECOMM-DNET	DeviceNet	\$428
RECOMM-CNET	ControlNet	568
RECOMM-PBUS	Profibus	594
RECOMM-IBUS	Interbus-s	776
RECOMM-ENET	EtherNet IP	594
RECOMM-485	RS485 DF1	407
RECOMM-H485	P1, N2, or modbus RTLL	640

SP600 OPTIONAL I/O

Model Number	Description	List
6SB-024A	24V I/O Card (6SB Only)	\$450
6SB-115B	115V I/O Card (6SB Only)	450
AK-M9-115VAC-1	115V I/O Card (6SP Only)	204

SP600 Power Distribution Options

The following section details commonly requested power distribution modifications. These modifications require the selection of an enclosure option.



Discount: MS-1AC

SP600 ENCLOSURE DIMENSIONS

HP VAC	Cabinet Version		
	460/575 AC	IP20 / NEMA 1	IP65 / NEMA 4
.5 - 3	A	B	B
5	A	B	B
7.5 - 15	B	C	C
20	B	C ⁽²⁾	C ⁽²⁾
25 - 30	C	C ⁽²⁾	C ⁽²⁾
40	C	C ⁽²⁾	C ⁽²⁾
50	C	C ⁽²⁾	C ⁽²⁾
60	C	C ⁽²⁾	C ⁽²⁾
75	D	E ⁽²⁾	D ⁽²⁾
100	D ⁽¹⁾	E ⁽²⁾	D ⁽²⁾
125	D ⁽¹⁾	E ⁽²⁾	D ⁽²⁾
150	D ⁽¹⁾	E ⁽²⁾	D ⁽²⁾
200	D ⁽¹⁾	E ⁽²⁾	D ⁽²⁾

⁽¹⁾ NEMA 1 drives 100 - 200 HP will usually include a door mounted fan and filter.

⁽²⁾ NEMA 4 - 12 drives 30 - 200 HP are usually supplied with a cooling device.

Floor-Mounted Cabinets*

Cabinet Version	Enclosure Size (A x B x C) mm (in)	Approximate Weight kg(lb)
D	2204 (87) x 864 (34) x 610 (24)	328 (725)
E	1830 (72) x 914 (36) x 610 (24)	328 (725)

- Version "E" is NEMA 4 only
- Version "D" cabinet is gray with white interior panel
- Version "E" cabinet is gray with white interior panel

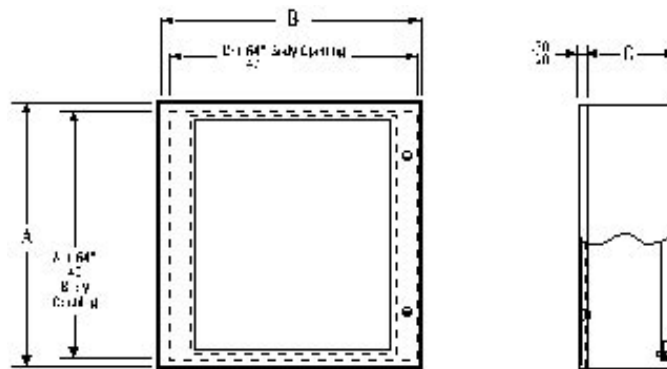
Enclosures with heat exchanges add about 10 inches to the width.
Enclosures with air conditioners add 15 inches to the width.

* Dimensions are estimates and are subject to change after engineering and drafting.

Wall-Mounted Cabinets*

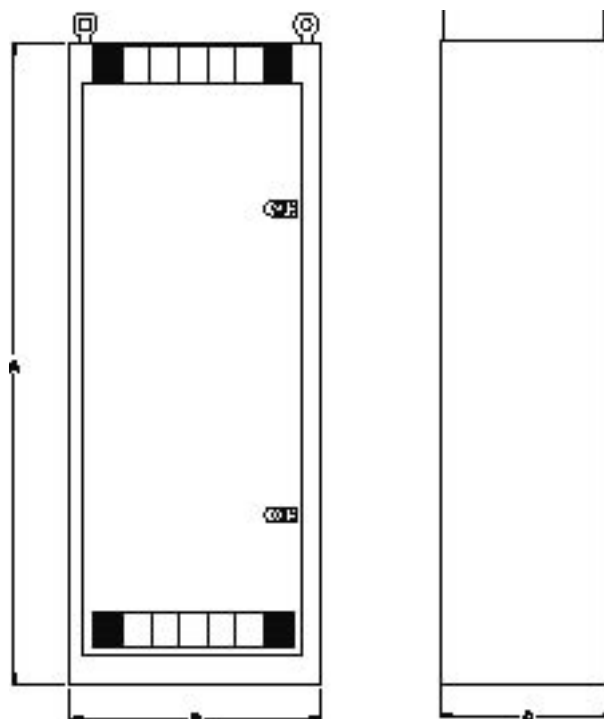
Cabinet Version	Enclosure Size (A x B x C) mm (in)	Approximate Weight kg(lb)
A	610 (24) x 610 (24) x 406 (16)	40 (89)
B	914 (36) x 762 (30) x 406 (16)	47 (103)
C	1219 (48) x 914 (36) x 406 (16)	59 (130)

Wall-mounted cabinets are gray with white interior panels.
Add 8 inches to the width if cooling device is supplied.



Front View

Side View



Front View

Side View