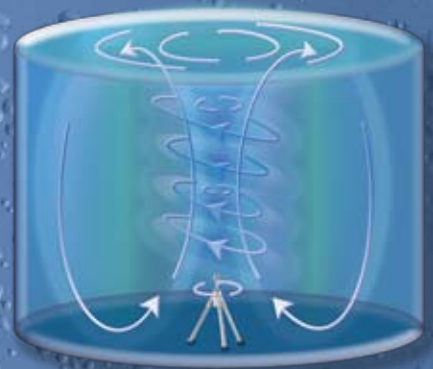


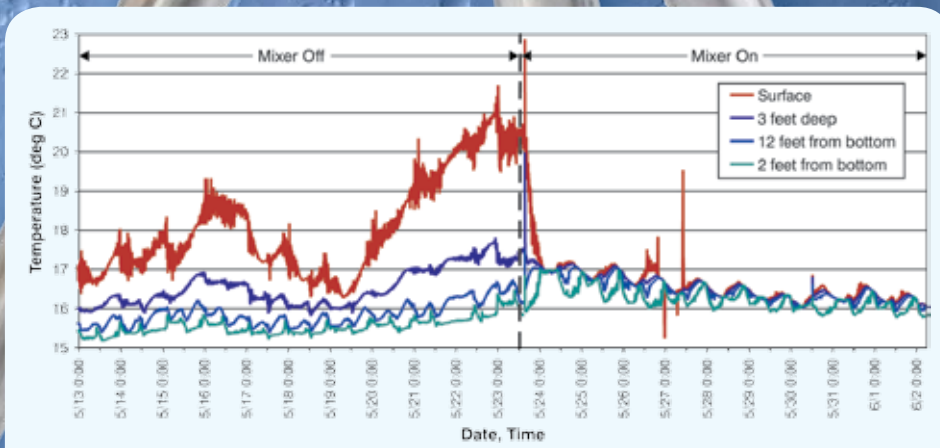


# Inside America's water storage tanks there's a revolution going on...



- Low turnover?
- Stratification?
- Stagnation?

- ~~Stratification~~
- ~~Loss of Residual~~
- ~~Bacterial Regrowth~~
- ~~Nitrification~~



The thermal gradient of 4°C in a 1 million gallon tank was reduced to less than 0.5°C within 12 hours.

Graphic courtesy of Carollo Engineers



# PAX Water Mixer - Product Specification

The PAX Water Mixer is a robust submersible system for complete mixing of water storage reservoirs up to 7 million gallons. Independent of fill cycle operations, PAX's patented impeller technology eliminates stratification, uniformly distributes disinfectant residual, and prevents conditions favorable to nitrification. The mixer easily installs through a conventional hatch in less than three hours without taking the reservoir out of service.

MIXER SPECIFICATIONS	
POWER SUPPLY REQUIREMENT	120 VAC, GFCI protected, 15 Amp circuit
CUSTOMER SUPPLIED POWER SWITCH	NEMA 3R, fused, safety disconnect switch
RPM	1200 RPM
NOMINAL POWER DRAW	320 Watts @ 1200 RPM
FOOTPRINT DIAMETER	4' 3" (1.3m)
HEIGHT	4' 0" (1.2m)
WEIGHT	62 lbs (28.2 kg)
WIRING	UL listed Type THW- Submersible Pump Cable, Heavy Duty Flat 14/3 w/ground
CONTROL CENTER	Stainless Steel NEMA 4X Enclosure
MATERIALS	
MOTOR HOUSING	NSF-61 approved 316 Stainless Steel
STAND	NSF-61 approved 316 Stainless Steel
MOTOR	Water Lubricated Brushless DC <small>(wetted material: NSF-61 approved 316 Stainless Steel; NSF-61 approved/chlorine/chloramine-resistant seals)</small>
FEET	EPDM NSF-61 approved/chlorine/chloramine resistant rubber

