

The
Strongest Membranes
Economical to install

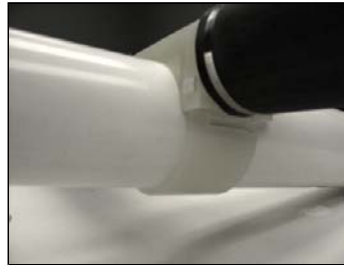


SSI-AFT Tube Diffusers and Tube Membranes

NEW!!! Introducing the **patent-pending translucent SNAPPY SADDLE™** for SSI tube diffusers. The diffuser is available up to 7'-3" (2.2m) long in a single piece. One worker can easily install the diffuser in seconds. Each diffuser has a single seal on top of the header which represents a significant improvement over conventional saddle mounted diffusers with seals on both sides of the pipe. Two seals are more likely to leak than one. AND the SNAPPY SADDLE is translucent, so you can see the pipe orifice and O-ring through the saddle during installation and maintenance. This diffuser will be ready for sale in April or May of 2007. See photos below...



New tube diffuser top view



New tube diffuser bottom view



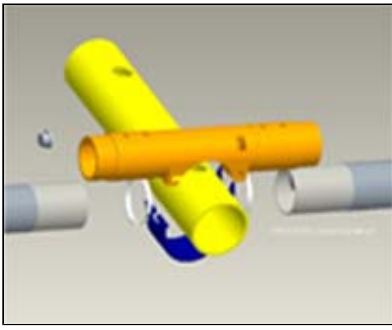
3 tube diffuser parts



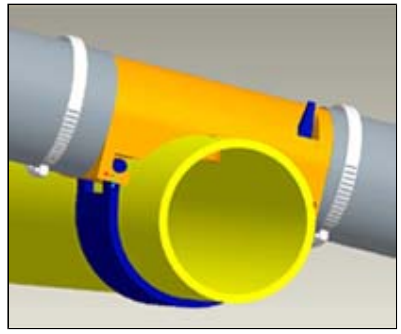
Assembling the parts



Locking with tapered pin



Exploded view of Diffusers Parts



3D view

Snappy Saddle Diffusers Installation



SSI manufactures tube diffusers with saddle or nipple connections to pipe, in a variety of lengths and diameters, and with **tube membranes** made of EPDM, PTFE coated EPDM, and Silicone. We also make replacement tube membranes competitively priced for other manufacturers products. Please see below for an overview of our tube diffuser product line:



Tube Diffuser with Super Saddle

To see more information on PTFE coated tube diffusers, [click here](#)

Model	AFTxxxx-SS*	AFTxxxx-N*	AFTxxxx-SP*
Connection Type and Material	ABS Super Saddle	304 SS Nipple	304 SS long nipple for Square Pipe w/ EPDM gaskets
Length	20" to 39" 500mm-1003mm	24" to 39" 610mm-1003mm	20" to 39" 500mm-1003mm
Diameter	3.7" 94mm	2.6" or 3.7" 65mm or 94mm	2.6" or 3.7" 65mm or 94mm
Slit Options	1mm, 1.3mm, or 2.0mm	1mm or 1.3mm	1mm or 1.3mm
Membrane Material	EPDM, PTFE or Silicone	EPDM, PTFE or Silicone	EPDM, PTFE or Silicone
Frame Material	ABS	PP or PVC	PP
Airflow Rate for 2.6" Diameters	N/A	2 SCFM/ft 11 m3/hr/m	2 SCFM/ft 11 m3/hr/m
Airflow Rate for 3.7" Diameters	3 SCFM/ft 16 m3/hr/m	3 SCFM/ft 16 m3/hr/m	3 SCFM/ft 16 m3/hr/m

* xxxx is length of the diffuser in mm. SS = Super Saddle. N= Nipple, and SP = Square Pipe.