

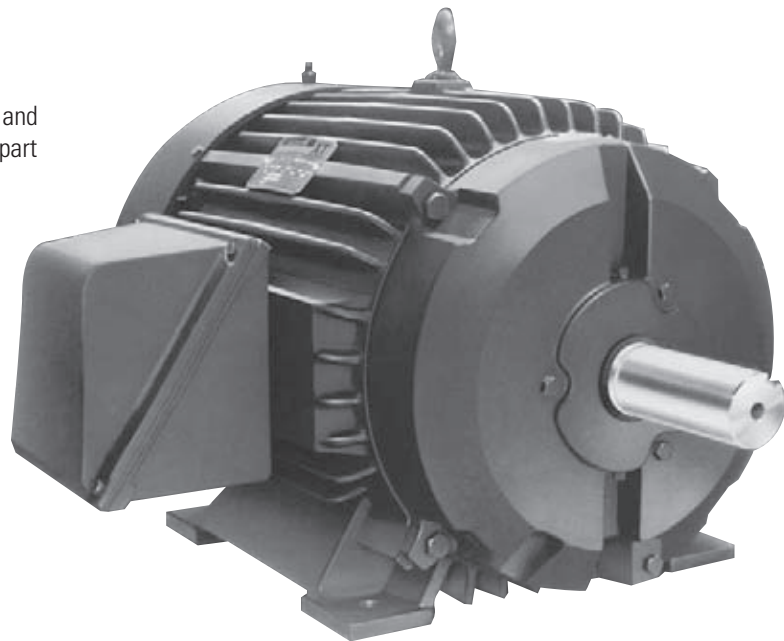
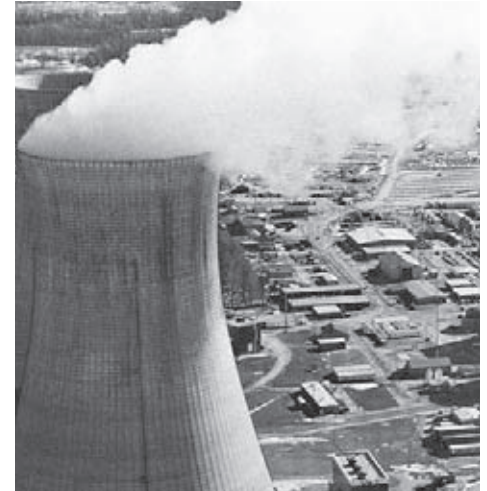
MILD ENVIRONMENT NUCLEAR MOTORS

Features and Benefits

- Meets IEEE-334-1994 definition for Mild Environment Product
- Available as 1E – Safety Related, or Non-1E Classification
- Cast iron construction – frames and end brackets
- Class H insulation system for extended thermal life
- VPI insulation available
- Wide range of modifications and accessories available
- Quality assurance per ISO-9001 and 10CFR50, Appendix B
- 40 year design life for Nuclear Power Generation Plants
- XE Premium Efficient design
- Enclosure is TEFC-XEX (severe duty)
- 3 phase, 60 Hz, 460 volts
- Neoprene terminal board gasket lead separator
- Zinc plated hex head hardware
- Patented PLS® re-greasable bearing system
- Cast iron bearing inner caps
- Automatic stainless T drains
- Insulation suitable for inverters and meets NEMA MG-1 section IV, part 31.40.4.2 (1600 volts)
- Low loss fan design reduces friction and windage losses
- Diagonally split conduit box exceeds NEC and NEMA volume standards and can be rotated in 90° increments
- Easy to access reliable bearings

Software documents consisting of:

- Seismic Analysis in accordance with IEEE 334-1994
- IEEE 334-1994 Environmental Qualification report
- Certified Dimension Print
- Routine Test Report
- Performance Data and Curves



Comparison

Mild Environment	Harsh Environment
<ul style="list-style-type: none"> • Dedicated per 10CFR50, Appendix B QA program 	<ul style="list-style-type: none"> • Manufactured per 10CFR50, Appendix B QA program
<ul style="list-style-type: none"> • Class F, H, VPI Insulation 	<ul style="list-style-type: none"> • Class H - RH
<ul style="list-style-type: none"> • 1 X 10⁴ RADS 	<ul style="list-style-type: none"> • 2 X 10⁸ RADS
<ul style="list-style-type: none"> • Designed, manufactured, & tested to applicable Industry Standards 	<ul style="list-style-type: none"> • Designed, manufactured, & tested specific to qualification purpose
<ul style="list-style-type: none"> • 40 year design life 	<ul style="list-style-type: none"> • 40 year qualification life
<ul style="list-style-type: none"> • Polypropylene Fan 	<ul style="list-style-type: none"> • Brass Fan
<ul style="list-style-type: none"> • Neoprene Lip Seal 	<ul style="list-style-type: none"> • Viton Lip Seal



www.baldor.com
www.ptplace.com
www.dodge-pt.com
www.reliance.com



Baldor Electric Company Headquarters

P.O. Box 2400, Fort Smith, AR 72902-2400 U.S.A., Ph: (1) 479.646.4711, Fax (1) 479.648.5792, International Fax (1) 479.648.5895

Baldor-DODGE/Reliance

6040 Ponders Court, Greenville, SC 29615-4617 U.S.A., Ph: (1) 864.297.4800, FAX: (1) 864.281.2433

RAPS-828-1 4/07-5M-K Copyright © 2007 Baldor Electric Company All Rights Reserved. Printed in USA.

This material is not intended to provide operational instructions. Appropriate instruction manuals and precautions should be studied prior to installation, operation or maintenance of equipment.