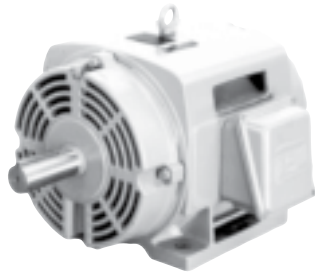


OIL WELL PUMPING MOTORS



ODP

THREE PHASE

These special motors have the high slip and high torque that oil well beam pumping units demand. WEG oil well pumping motors are requested on specifications for most major oil companies around the world as a result of their long lasting performance, low purchase and maintenance cost.



TEFC

FRACTIONAL HP

GENERAL PURPOSE

NEMA PREMIUM EFFICIENCY

CRUSHER® DUTY

IEC TRU-METRIC™

PUMP MOTORS

DEFINITE PURPOSE

ADD-ON™ MODIFICATIONS

MOTOR TECHNICAL DATA

DRIVES & SOFT STARTERS

CONTROLS

APPLICATIONS

- Beam Pumps
- Sucker Rod Pumps
- Other applications requiring high starting torque or high slip

OPTIONAL FEATURES

- Special voltages
- Other mountings
- Specially designed shaft
- Space heaters
- Second shaft end
- Thermistors, Thermostats or RTD's (PT100)
- Additional terminal box
- Stainless steel shaft
- 575V

STANDARD FEATURES

HIGH STARTING and BREAKDOWN TORQUE - NEMA DESIGN 'D' (5 - 8% SLIP)

- Single and triple rated available
- Three-phase, 60Hz
- Voltage: 208-230/460
- 184T up to 445T cast iron frames
- VI and VIII pole
- Squirrel cage rotor / Aluminum die cast
- Ball bearings are supplied as standard (100 HP & above Roller Bearings)
- 1045 Carbon Steel Shaft for frames up to 365T. 4140 steel shaft for motors 404T and above.
- Enclosure: Open Drip Proof (ODP) and Totally Enclosed Fan Cooled (TEFC)
- Dimensions according to NEMA standard
- Class 'F' insulation ('B' temperature rise)

- Continuous duty (S1)
- 104°F (40°C) ambient temperature
- Altitude: 3300 ft (1000m)
- F2 mount
- Stainless steel nameplate
- Paint: Enamel alkyd resin base
- NPT threaded terminal box
- Plastic drain plugs
- Regreasable bearings system (frames 254T and up)
- Shaft slingers (V-ring)
- Rodent screens (ODP only)
- Service factor: 1.00
- Color: RAL 9010 (White)

FRAME – SPECIFIC FEATURES (ODP ONLY)

For Frames 184T and 213/5T only (ODP only)

- Welded steel plate frames (welded feet)
- Aluminum endshields and terminal box
- Cooling system with finned rotor
- Cast iron endshields fixed with through bolt construction
- ZZ bearing (double shielded)
- Degree of protection: IP21
- Shaft slingers (V-ring)
- Service factor: 1.0

For Frames 254/6T and up (ODP only)

- Cast iron frames
- Cast iron endshields and terminal box
- Cooling system with finned rotor
- Regreasable bearings positive pressure lubrication system (frame 254T and up)

- Degree of protection: IP23
 - Rodent screen
 - Shaft slingers (V-ring)
 - Service factor: 1.0
 - Roller bearings on frame 404T and up
- ### ONLY FOR TEFC (IP55) MOTORS
- V-ring slingers on both endshields
 - 2RS sealing (double sealed) bearings
 - Service factor: 1.15





OIL WELL PUMPING MOTORS



HIGH SLIP – NEMA DESIGN ‘D’ ODP WITH SCREENS

HP	RPM	NEMA Frame	Catalog Number	List Price	Mult. Sym.	Approx. Shipp. Weight Lbs	FL Amps 460V	FL Eff. %	"C" Dimension (in.)	Voltage	Notes
1.5	1200	184T	00152OS2EOW184T	776	P1E	68	2.70	71.0	14.291	208-230/460V	
2	1200	184T	00212OS3EOW184T	793	P1E	79	3.20	81.3	14.291	208-230/460V	
3	1200	213T	00312OS3EOW213T	866	P1E	101	4.70	80.7	17.165	208-230/460V	
5	1200	215T	00512OS3EOW215T	989	P1E	128	7.10	86.5	17.165	208-230/460V	
7.5	1200	254T	00712OS3EOW254T	1,434	P1E	280	10.2	79.0	20.669	208-230/460V	
10	1200	256T	01012OS3EOW256T	1,796	P1E	416	13.7	80.0	22.401	208-230/460V	
15	1200	284T	01512OS3EOW284T	2,441	P1E	438	18.2	86.5	23.386	208-230/460V	
20	1200	286T	02012OS3EOW286T	2,603	P1E	600	24.5	86.5	24.882	208-230/460V	
25	1200	324T	02512OS3EOW324T	3,247	P1E	613	33.2	87.5	26.181	208-230/460V	
30	1200	326T	03012OS3EOW326T	3,848	P1E	745	39.1	87.8	27.667	208-230/460V	
40	1200	365T	04012OS3EOW365T	5,277	P1E	970	50.0	89.5	29.764	208-230/460V	
50	1200	405T	05012OS3EOW405T	6,834	P1E	1200	61.3	90.2	34.133	208-230/460V	
60	1200	405T	06012OS3EOW405T	7,495	P1E	1355	75.0	88.5	34.133	208-230/460V	
75	1200	445T	07512OS3EOW445T	12,308	P1E	1476	95.7	90.2	39.803	208-230/460V	
100	1200	445T	10012OS3EOW445T	13,078	P1E	2161	127	90.2	39.803	208-230/460V	

- ELECTRICAL FEATURES ON PAGE B-43.
- MECHANICAL FEATURES ON PAGE B-90, B-91.



HIGH SLIP – NEMA DESIGN ‘D’ – TEFC

HP	RPM	NEMA Frame	Catalog Number	List Price	Mult. Sym.	Approx. Shipp. Weight Lbs	FL Amps 460V	FL Eff. %	"C" Dimension (in.)	Voltage	Notes
3	1200	215T	00312ES3EOW215T	1,027	P1E	128	5.00	75.7	19.517	208-230/460V	
5	1200	215T	00512ES3EOW215T	1,170	P1E	183	7.40	77.5	19.517	208-230/460V	
	900	256T	00509ES3EOW256T	2,242	P1E	284	7.25	77.0	24.945	208-230/460V	
7.5	1200	254T	00712ES3EOW254T	1,688	P1E	280	9.25	85.6	23.213	208-230/460V	
10	1200	256T	01012ES3EOW256T	2,070	P1E	326	12.5	85.6	24.945	208-230/460V	
	900	286T	01009ES3EOW286T	3,437	P1E	382	13.9	82.5	27.929	208-230/460V	
15	1200	284T	01512ES3EOW284T	2,679	P1E	455	18.0	87.1	26.433	208-230/460V	
	900	324T	01509ES3EOW324T	4,293	P1E	548	19.5	85.5	29.620	208-230/460V	
20	1200	286T	02012ES3EOW286T	3,162	P1E	488	24.5	87.3	27.929	208-230/460V	
	900	326T	02009ES3EOW326T	4,872	P1E	656	26.2	85.5	31.116	208-230/460V	
25	1200	324T	02512ES3EOW324T	3,887	P1E	607	30.0	88.9	29.620	208-230/460V	
30	1200	326T	03012ES3EOW326T	4,515	P1E	656	35.5	89.4	31.116	208-230/460V	
40	1200	365T	04012ES3EOW365T	6,290	P1E	950	52.5	87.5	33.709	208-230/460V	
50	1200	404T	05012ES3EOW404T	8,172	P1E	1189	62.0	88.1	38.077	208-230/460V	
60	1200	405T	06012ES3EOW405T	9,414	P1E	1500	78.5	89.0	38.077	208-230/460V	
75	1200	444T	07512ES3EOW444T	14,976	P1E	1720	90.0	87.0	43.776	208-230/460V	
100	1200	445T	10012ES3EOW445T	18,074	P1E	2039	115	88.0	43.776	208-230/460V	

- ELECTRICAL FEATURES ON PAGE B-44.
- MECHANICAL FEATURES ON PAGE B-92.

FRACTIONAL HP

GENERAL PURPOSE

NEMA PREMIUM EFFICIENCY

CRUSHER® DUTY

IEC TRU-METRIC™

PUMP MOTORS

DEFINITE PURPOSE

ADD-ON™ MODIFICATIONS

MOTOR TECHNICAL DATA

DRIVES & SOFT STARTERS

CONTROLS

OIL WELL PUMPING MOTORS



HIGH SLIP – NEMA DESIGN ‘D’ – TEFC TRIPLED RATED

HP	RPM	NEMA Frame	Catalog Number	List Price	Mult. Sym.	Approx. Shipp. Weight Lbs	FL Amps 460V	FL Eff. %	"C" Dimension (in.)	Voltage	Notes
10/7.5/5	1200	256T	01012ES3QOT256T	2,174	P1E	326	12.5	85.6	24.945	460V	
15/10/7.5	1200	284T	01512ES3QOT284T	2,814	P1E	455	18.0	87.1	26.433	460V	
20/15/10	1200	286T	02012ES3QOT286T	3,321	P1E	488	24.5	87.3	27.929	460V	
25/20/15	1200	324T	02512ES3QOT324T	4,081	P1E	607	30.0	88.9	29.620	460V	
30/25/20	1200	326T	03012ES3QOT326T	4,742	P1E	656	35.5	89.4	31.116	460V	
40/30/25	1200	365T	04012ES3QOT365T	6,920	P1E	950	52.5	87.5	33.709	460V	
50/40/30	1200	404T	05012ES3QOT404T	8,990	P1E	1,189	62.0	88.1	38.077	460V	
60/50/40	1200	444T	06012ES3QOT444T	10,355	P1E	1,345	78.5	89.0	38.077	460V	
75/60/50	1200	444T	07512ES3QOT444T	16,473	P1E	1,544	90.0	87.0	43.776	460V	
100/75/60	1200	444T	10012ES3QOT444T	19,881	P1E	2,039	115	88.0	43.776	460V	

- ELECTRICAL FEATURES ON PAGE B-44.
- MECHANICAL FEATURES ON PAGE B-92.

FRACTIONAL HP

GENERAL PURPOSE

NEMA PREMIUM EFFICIENCY

CRUSHER® DUTY

IEC TRU-METRIC™

PUMP MOTORS

DEFINITE PURPOSE

ADD-ON™ MODIFICATIONS

MOTOR TECHNICAL DATA

DRIVES & SOFT STARTERS

CONTROLS