

EXPLOSION PROOF MOTORS



THREE PHASE FOOT MOUNT & FLANGE MOUNT

WEG Explosion Proof motors are suitable for applications requiring UL or CSA certification for hazardous locations. Thermally protected with thermostats, all motors manufactured are submitted to hydrostatic as well as other routine testing at the factory to ensure compliance to the required specifications.

WEG High Efficiency Explosion Proof motors are specifically designed to meet or exceed all EPC requirements for energy efficiency.



FRACTIONAL HP

GENERAL PURPOSE

NEMA PREMIUM EFFICIENCY

CRUSHER® DUTY

IEC TRU-METRIC™

PUMP MOTORS

DEFINITE PURPOSE

ADD-ON™ MODIFICATIONS

MOTOR TECHNICAL DATA

DRIVES & SOFT STARTERS

CONTROLS

APPLICATIONS

- Petroleum and gasoline
- Flour / feed mills
- Grain elevators
- Fans
- Pumps
- Blowers
- Material handling equipment
- Other applications requiring motors UL or CSA listed for hazardous locations.

STANDARD FEATURES

- Efficiency Certification number CC029A according to US Department of Energy Regulations
- Three-phase, 60Hz
- Voltage: 208-230/460, 460 or 575V
- 60/50Hz Nameplate (30HP and below)
- Squirrel cage rotor / Aluminum die cast
- Totally Enclosed Fan Cooled – TEFC (IP54)
- Ball bearings are supplied as standard
- Cast iron frame
- Class 'F' insulation
- Temperature rise: Class 'B' (80°C)
- Service factor: 1.15
- Inverter Duty as per CSA Standard (LR50962)
- NEMA dimensions
- NEMA ratings design 'B'
- Continuous Duty (S1)
- 104°F (40°C) ambient temperature
- Altitude: 3300 ft (1000 m)
- 1045 Carbon Steel Shaft for frames up to 365T
- 4140 steel shaft for motors 404T and above. (3600 RPM motors supplied with 1045)
- Class 'F' insulation for all frames
- Class 'H' impregnation resin
- F1 mount
- Stainless steel nameplate
- Paint: Synthetic Enamel alkyd resin base (exceeds ASTM B117 salt spray test)
- Color: RAL 5007 – Blue (II, IV and VI pole)
- NPT threaded terminal box
- Non-sparking fan
- Thermostats

OPTIONAL FEATURES

- Special Voltages and frequency
- Stainless steel shaft
- C and D flanges
- F2 mount

CSA AND UL APPROVED



CSA approved – File LR 50962

Class I, Division I, groups C and D

Class II, Division I, groups F and G



UL approved – File E 87848

Temperature code T4

Frame 143T up to 326T

Class I, Division I, groups C and D

Class II, Division I, groups F and G

ALSO ENERGY VERIFIED
CSA C390-93(+)

Frame 364T up to 5867

Temperature code T3C

Class I, Division I, groups C and D

Class II, Division I, groups F and G *

* For group G, Service Factor 1.0

Note: Motors are tested according to IEEE 112 std. – method 'B' or C390 CSA

• Design B torque rating on nameplate can be re-plated for design C

Energy efficiency motors verified by UL in addition to the DOE.



E 87848

APPROVED BY



E 104590

APPROVED BY



LR 50962



EXPLOSION PROOF MOTORS

TEFC - HIGH EFFICIENCY

EPACT CC# CC029A



FOOT MOUNT

HP	RPM	NEMA FRAME	CATALOG NUMBER	LIST PRICE	MULT. SYM.	APPROX. SHIPP. WEIGHT (LBS.)	FL AMPS 460V	FL EFF. %	"C" DIMENSION (IN.)	VOLTAGE	NOTES
1	1800	143T	00118XP3E143T	703	X1	71	1.49	82.5	12.760	208-230/460V	
	1800	143T	00118XP3H143T	703	X1	71	1.49	82.5	12.760	575V	
	1200	145T	00112XP3E145T	760	X1	67	1.70	80.0	13.752	208-230/460V	
	1200	145T	00112XP3H145T	760	X1	67	1.70	80.0	13.752	575V	◆
	900	182T	00109XP3E182T	1,512	X1	132	2.24	72.5	14.862	208-230/460V	
1.5	3600	143T	00156XP3E143T	727	X1	69	1.99	82.5	12.760	208-230/460V	
	3600	143T	00156XP3H143T	727	X1	69	1.99	82.5	12.760	575V	◆
	1800	145T	00158XP3E145T	729	X1	78	2.05	84.0	13.752	208-230/460V	
	1800	145T	00158XP3H145T	729	X1	78	2.05	84.0	13.752	575V	
	1200	182T	00152XP3E182T	920	X1	128	2.38	85.5	14.862	208-230/460V	
	1200	182T	00152XP3H182T	920	X1	128	2.38	85.5	14.862	575V	◆
	900	184T	00159XP3E184T	1,548	X1	137	2.81	74.5	15.862	208-230/460V	
2	3600	145T	00236XP3E145T	741	X1	71	2.60	84.0	13.752	208-230/460V	
	3600	145T	00236XP3H145T	741	X1	71	2.60	84.0	13.752	575V	◆
	1800	145T	00218XP3E145T	756	X1	80	2.70	84.0	13.752	208-230/460V	
	1800	145T	00218XP3H145T	756	X1	80	2.70	84.0	13.752	575V	
	1200	184T	00212XP3E184T	966	X1	132	3.20	86.5	15.862	208-230/460V	
	1200	184T	00212XP3H184T	966	X1	132	3.20	86.5	15.862	575V	◆
	900	213T	00209XP3E213T	1,953	X1	174	3.40	78.0	17.952	208-230/460V	
3	3600	182T	00336XP3E182T	920	X1	135	3.59	85.5	14.862	208-230/460V	
	3600	182T	00336XP3H182T	920	X1	135	3.59	85.5	14.862	575V	◆
	1800	182T	00318XP3E182T	960	X1	132	3.90	87.5	14.862	208-230/460V	
	1800	182T	00318XP3H182T	960	X1	132	3.90	87.5	14.862	575V	
	1200	213T	00312XP3E213T	1,414	X1	167	4.15	87.5	17.952	208-230/460V	
	1200	213T	00312XP3H213T	1,414	X1	167	4.15	87.5	17.952	575V	◆
	900	215T	00309XP3E215T	2,134	X1	198	4.67	80.0	19.450	208-230/460V	
5	3600	184T	00536XP3E184T	1,035	X1	126	5.90	87.5	15.862	208-230/460V	
	3600	184T	00536XP3H184T	1,035	X1	126	5.90	87.5	15.862	575V	◆
	1800	184T	00518XP3E184T	986	X1	137	6.48	87.5	15.862	208-230/460V	
	1800	184T	00518XP3H184T	986	X1	137	6.48	87.5	15.862	575V	
	1200	215T	00512XP3E215T	1,439	X1	175	6.80	87.5	19.450	208-230/460V	
	1200	215T	00512XP3H215T	1,439	X1	175	6.80	87.5	19.450	575V	◆
	900	254T	00509XP3E254T	3,237	X1	324	7.85	84.5	23.175	208-230/460V	
7.5	3600	213T	00736XP3E213T	1,397	X1	200	8.66	88.5	17.952	208-230/460V	
	3600	213T	00736XP3H213T	1,397	X1	200	8.66	88.5	17.952	575V	◆
	1800	213T	00718XP3E213T	1,439	X1	196	9.53	89.5	17.952	208-230/460V	
	1800	213T	00718XP3H213T	1,439	X1	196	9.53	89.5	17.952	575V	
	1200	254T	00712XP3E254T	1,983	X1	313	9.53	89.5	23.175	208-230/460V	
	1200	254T	00712XP3H254T	1,983	X1	313	9.53	89.5	23.175	575V	◆
	900	256T	00709XP3E256T	3,675	X1	348	11.3	86.0	24.923	208-230/460V	
10	3600	215T	01036XP3E215T	1,466	X1	196	11.7	89.5	19.450	208-230/460V	
	3600	215T	01036XP3H215T	1,466	X1	196	11.7	89.5	19.450	575V	◆
	1800	215T	01018XP3E215T	1,542	X1	211	12.8	90.2	19.450	208-230/460V	
	1800	215T	01018XP3H215T	1,542	X1	211	12.8	90.2	19.450	575V	
	1200	256T	01012XP3E256T	2,296	X1	329	13.4	89.5	24.923	208-230/460V	
	1200	256T	01012XP3H256T	2,296	X1	329	13.4	89.5	24.923	575V	
	900	284T	01009XP3E284T	4,631	X1	470	13.2	87.4	26.407	208-230/460V	

For 'C' flange models : Add a 'C' to the end of the part number. EX. 00518XP3E184TC

- ELECTRICAL FEATURES ON PAGE B-8.
- MECHANICAL FEATURES ON PAGE B-59.
- ◆ = Product may not be available from stock

FRACTIONAL HP

GENERAL PURPOSE

NEMA PREMIUM EFFICIENCY

CRUSHER® DUTY

IEC TRU-METRIC™

PUMP MOTORS

DEFINITE PURPOSE

ADD-ON™ MODIFICATIONS

MOTOR TECHNICAL DATA

DRIVES & SOFT STARTERS

CONTROLS

EXPLOSION PROOF MOTORS

TEFC – HIGH EFFICIENCY

EPACT CC# CC029A



FOOT MOUNT

HP	RPM	NEMA FRAME	CATALOG NUMBER	LIST PRICE	MULT. SYM.	APPROX. SHIPP. WEIGHT (LBS.)	FL AMPS 460V	FL EFF. %	"C" DIMENSION (IN.)	VOLTAGE	NOTES
15	3600	254T	01536XP3E254T	1,922	X1	310	17.0	90.2	23.175	208-230/460V	◆
	3600	254T	01536XP3H254T	1,922	X1	310	17.0	90.2	23.175	575V	◆
	1800	254T	01518XP3E254T	2,008	X1	319	17.9	91.0	23.175	208-230/460V	
	1800	254T	01518XP3H254T	2,008	X1	319	17.9	91.0	23.175	575V	
	1200	284T	01512XP3E284T	3,230	X1	346	17.3	91.0	26.407	208-230/460V	
	1200	284T	01512XP3H284T	3,230	X1	346	17.3	91.0	26.407	575V	◆
20	900	286T	01509XP3E286T	5,677	X1	481	18.8	88.5	27.905	208-230/460V	
	3600	256T	02036XP3E256T	2,514	X1	366	23.3	90.2	24.923	208-230/460V	◆
	3600	256T	02036XP3H256T	2,514	X1	366	23.3	90.2	24.923	575V	◆
	1800	256T	02018XP3E256T	2,453	X1	352	24.4	91.0	24.923	208-230/460V	
	1800	256T	02018XP3H256T	2,453	X1	352	24.4	91.0	24.923	575V	
	1200	286T	02012XP3E286T	3,703	X1	470	23.5	91.0	27.905	208-230/460V	
25	1200	286T	02012XP3H286T	3,703	X1	470	23.5	91.0	27.905	575V	◆
	900	324T	02009XP3E324T	6,984	X1	574	29.6	88.5	29.602	208-230/460V	
	3600	284TS	02536XP3E284TS	3,308	X1	419	29.0	91.0	25.033	208-230/460V	◆
	3600	284TS	02536XP3H284TS	3,308	X1	419	29.0	91.0	25.033	575V	◆
	1800	284T	02518XP3E284T	3,110	X1	503	29.6	92.4	26.407	208-230/460V	
	1800	284T	02518XP3H284T	3,110	X1	503	29.6	92.4	26.407	575V	◆
30	1200	324T	02512XP3E324T	4,456	X1	572	29.8	91.7	29.602	208-230/460V	
	1200	324T	02512XP3H324T	4,456	X1	572	29.8	91.7	29.602	575V	◆
	900	326T	02509XP3E326T	8,513	X1	640	35.3	89.0	31.106	208-230/460V	
	3600	286TS	03036XP3E286TS	3,374	X1	472	33.8	91.0	26.531	208-230/460V	◆
	1800	286T	03018XP3E286T	3,545	X1	547	34.4	92.4	27.905	208-230/460V	
	1800	286T	03018XP3H286T	3,545	X1	547	34.4	92.4	27.905	575V	
40	1200	326T	03012XP3E326T	5,163	X1	625	35.4	91.7	31.106	208-230/460V	
	900	364T	03009XP3E364T	11,677	X1	1025	36.9	90.2	33.701	208-230/460V	◆
	3600	324TS	04036XP3E324TS	4,652	X1	618	46.1	91.7	28.102	208-230/460V	◆
	3600	324TS	04036XP3H324TS	4,652	X1	618	46.1	91.7	28.102	575V	◆
	1800	324T	04018XP3E324T	4,461	X1	623	47.6	93.0	29.602	208-230/460V	
	1800	324T	04018XP3H324T	4,461	X1	623	47.6	93.0	29.602	575V	
50	1200	364T	04012XP3E364T	8,617	X1	992	47.1	93.0	33.701	208-230/460V	
	1200	364T	04012XP3H364T	8,617	X1	992	47.1	93.0	33.701	575V	◆
	900	365T	04009XP3E365T	12,326	X1	1085	49.1	90.2	33.701	208-230/460V	◆
	3600	326TS	05036XP3E326TS	5,195	X1	656	56.5	92.4	29.606	208-230/460V	◆
	3600	326TS	05036XP3H326TS	5,195	X1	656	56.5	92.4	29.606	575V	◆
	1800	326T	05018XP3E326T	5,245	X1	720	57.8	93.6	31.106	208-230/460V	
60	1800	326T	05018XP3H326T	5,245	X1	720	57.8	93.6	31.106	575V	
	1200	365T	05012XP3E365T	8,921	X1	992	58.1	93.0	33.701	208-230/460V	
	900	404T	05009XP3E404T	14,420	X1	1308	61.5	91.0	38.074	208-230/460V	◆
	3600	364TS	06036XP3E364TS	8,373	X1	1014	69.0	93.0	31.575	208-230/460V	◆
	1800	364T	06018XP3E364T	8,770	X1	1060	67.0	93.6	33.701	208-230/460V	
	1200	404T	06012XP3E404T	11,089	X1	1222	70.1	93.6	38.074	208-230/460V	
900	405T	06009XP3E405T	16,985	X1	1368	75.5	91.0	38.074	208-230/460V	◆	

For 'C' flange models : Add a 'C' to the end of the part number. EX. 00518XP3E184TC

- ELECTRICAL FEATURES ON PAGE B-8.
- MECHANICAL FEATURES ON PAGE B-59.

◆ = Product may not be available from stock

FRACTIONAL HP

GENERAL PURPOSE

NEMA PREMIUM EFFICIENCY

CRUSHER® DUTY

IEC TRU-METRIC™

PUMP MOTORS

DEFINITE PURPOSE

ADD-ON™ MODIFICATIONS

MOTOR TECHNICAL DATA

DRIVES & SOFT STARTERS

CONTROLS



EXPLOSION PROOF MOTORS

TEFC - HIGH EFFICIENCY

EPACT CC# CC029A



FOOT MOUNT

HP	RPM	NEMA FRAME	CATALOG NUMBER	LIST PRICE	MULT. SYM.	APPROX. SHIPP. WEIGHT (LBS.)	FL AMPS 460V	FL EFF. %	"C" DIMENSION (IN.)	VOLTAGE	NOTES
75	3600	365TS	07536XP3E365TS	9,472	X1	1156	82.5	93.0	31.575	208-230/460V	◆
	1800	365T	07518XP3E365T	9,333	X1	1347	82.4	94.1	33.701	208-230/460V	
	1200	405T	07512XP3E405T	11,530	X1	1291	86.8	93.6	38.074	208-230/460V	
	900	444T	07509XP3E444T	21,094	X1	1863	92.5	92.0	43.797	208-230/460V	◆
100	3600	405TS	10036XP3E405TS	10,291	X1	1456	113	93.6	35.074	208-230/460V	◆
	3600	405TS	10036XP3G405TS	10,291	X1	1456	113	93.6	35.074	460V	◆
	1800	405T	10018XP3E405T	11,603	X1	1390	115	94.5	38.074	208-230/460V	
	1800	405T	10018XP3G405T	11,603	X1	1390	115	94.5	38.074	460V	
	1200	444T	10012XP3E444T	17,528	X1	1720	121	94.1	43.797	208-230/460V	
	1200	444T	10012XP3G444T	17,528	X1	1720	121	94.1	43.797	460V	
	900	445T	10009XP3E445T	25,321	X1	2028	133	92.0	43.797	208-230/460V	◆
	900	445T	10009XP3G445T	25,321	X1	2028	133	92.0	43.797	460V	◆
125	3600	444TS	12536XP3G444TS	17,394	X1	1951	131	94.5	40.047	460V	◆
	1800	444T	12518XP3E444T	16,827	X1	1797	138	94.5	43.797	208-230/460V	
	1800	444T	12518XP3G444T	16,827	X1	1797	138	94.5	43.797	460V	
	1200	445T	12512XP3G445T	18,165	X1	2050	141	94.1	43.797	460V	
	900	504	12509XP3G504	28,717	X1	2443	155	92.5	49.445	460V	◆
150	3600	445TS	15036XP3G445TS	17,956	X1	1991	160	94.5	40.047	460V	◆
	1800	445T	15018XP3E445T	18,182	X1	2006	168	95.0	43.797	208-230/460V	
	1800	445T	15018XP3G445T	18,182	X1	2006	168	95.0	43.797	460V	
	1200	504	15012XP3G504	25,276	X1	2167	171	95.0	49.445	460V	◆
	900	505	15009XP3G505	31,289	X1	2694	189	92.5	49.445	460V	◆
200	3600	504S	20036XP3G504S	24,538	X1	2227	223	95.0	47.193	460V	◆
	1800	504	20018XP3G504	22,948	X1	2385	230	95.0	49.445	460V	◆
	1200	505	20012XP3G505	26,250	X1	2467	236	95.0	49.445	460V	◆
	900	586/7	20009XP3G586/7	47,701	X1	4035	256	94.5	61.389	460V	◆
250	3600	505S	25036XP3G505S	25,936	X1	2573	268	95.4	47.193	460V	◆
	1800	505	25018XP3G505	27,388	X1	2740	283	95.4	49.445	460V	◆
	1200	586/7	25012XP3G586/7	46,557	X1	4002	305	95.0	61.389	460V	◆
	900	586/7	25009XP3G586/7	50,701	X1	4344	313	93.9	61.389	460V	◆
300	3600	586/7S	30036XP3G586/7S	46,692	X1	3638	325	95.4	54.514	460V	◆
	1800	586/7	30018XP3G586/7	40,772	X1	4322	329	95.4	61.389	460V	◆
	1200	586/7	30012XP3G586/7	50,565	X1	4487	355	95.0	61.389	460V	◆
350	3600	586/7S	35036XP3G586/7S	54,890	X1	3859	384	95.4	54.514	460V	◆
	1800	586/7	35018XP3G586/7	44,351	X1	4344	398	95.4	61.389	460V	◆
400	1800	586/7	40018XP3G586/7	50,913	X1	4719	459	95.4	61.389	460V	◆
450	1800	586/7	45018XP3G586/7	54,334	X1	5248	505	95.4	61.389	460V	◆
500	1800	586/7	50018XP3G586/7	58,405	X1	5469	564	95.8	61.389	460V	◆

For 'C' flange models : Add a 'C' to the end of the part number. EX. 00518XP3E184TC

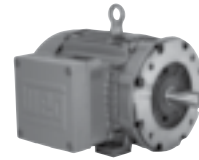
- ELECTRICAL FEATURES ON PAGE B-9.
- MECHANICAL FEATURES ON PAGE B-59.
- ◆ = Product may not be available from stock

EXPLOSION PROOF MOTORS

TEFC – HIGH EFFICIENCY



EPACT CC# CC029A



'C' FLANGE – FOOT MOUNT

HP	RPM	NEMA Frame	Catalog Number	List Price	Mult. Sym.	Approx. Shipp. Weight Lbs	FL Amps 460V	FL Eff. %	"C" Dimension (in.)	Voltage	Notes
1	1800	143TC	00118XP3E143TC	764	X1	71	1.49	82.5	12.760	208-230/460V	
	1200	145TC	00112XP3E145TC	820	X1	67	1.70	80.0	13.752	208-230/460V	
1.5	3600	143TC	00156XP3E143TC	787	X1	69	1.99	82.5	12.760	208-230/460V	
	1800	145TC	00158XP3E145TC	790	X1	78	2.05	84.0	13.752	208-230/460V	
	1200	182TC	00152XP3E182TC	989	X1	128	2.38	85.5	14.862	208-230/460V	
2	3600	145TC	00236XP3E145TC	802	X1	71	2.60	84.0	13.752	208-230/460V	
	1800	145TC	00218XP3E145TC	802	X1	80	2.70	84.0	13.752	208-230/460V	
	1200	184TC	00212XP3E184TC	1,035	X1	132	3.20	86.5	15.862	208-230/460V	
3	3600	182TC	00336XP3E182TC	989	X1	135	3.59	85.5	14.862	208-230/460V	
	1800	182TC	00318XP3E182TC	1,030	X1	132	3.90	87.5	14.862	208-230/460V	
	1200	213TC	00312XP3E213TC	1,490	X1	167	4.15	87.5	17.952	208-230/460V	
5	1800	184TC	00518XP3E184TC	1,056	X1	137	6.48	87.5	15.862	208-230/460V	
7.5	1800	213TC	00718XP3E213TC	1,515	X1	196	9.53	89.5	17.952	208-230/460V	
10	1800	215TC	01018XP3E215TC	1,618	X1	211	12.8	90.2	19.450	208-230/460V	
15	1800	254TC	01518XP3E254TC	2,111	X1	319	17.9	91.0	23.175	208-230/460V	
20	1800	256TC	02018XP3E256TC	2,556	X1	352	24.4	91.0	24.923	208-230/460V	
25	1800	284TC	02518XP3E284TC	3,257	X1	503	29.6	92.4	26.407	208-230/460V	
30	1800	286TC	03018XP3E286TC	3,692	X1	547	34.4	92.4	27.905	208-230/460V	
40	1800	324TC	04018XP3E324TC	4,643	X1	623	47.6	93.0	29.602	208-230/460V	
50	1800	326TC	05018XP3E326TC	5,425	X1	720	57.8	93.6	31.106	208-230/460V	
60	1800	364TC	06018XP3E364TC	9,435	X1	1060	67.0	93.6	33.701	208-230/460V	
75	1800	365TC	07518XP3E365TC	9,998	X1	1347	82.4	94.1	33.701	208-230/460V	
100	1800	405TC	10018XP3E405TC	12,338	X1	1390	115	94.5	38.074	208-230/460V	

These models are fitted with a C-Flange but still have a foot mount design for maximum mounting flexibility

- ELECTRICAL FEATURES ON PAGE B-8, B-9.
- MECHANICAL FEATURES ON PAGE B-60.



'C' FLANGE – FOOTLESS

HP	RPM	NEMA Frame	Catalog Number	List Price	Mult. Sym.	Approx. Shipp. Weight Lbs	FL Amps 460V	FL Eff. %	"C" Dimension (in.)	Voltage	Notes
1	1800	143TC	00118XP3ER143TC	764	X1	71	1.49	82.5	12.750	208-230/460V	●
1.5	1800	145TC	00158XP3ER145TC	790	X1	78	2.05	84.0	13.752	208-230/460V	●
2	1800	145TC	00218XP3ER145TC	802	X1	80	2.70	84.0	13.752	208-230/460V	●
3	1800	182TC	00318XP3ER182TC	1,030	X1	132	3.90	87.5	14.862	208-230/460V	●
5	1800	184TC	00518XP3ER184TC	1,056	X1	137	6.48	87.5	15.862	208-230/460V	●
7.5	1800	213TC	00718XP3ER213TC	1,515	X1	196	9.53	89.5	17.952	208-230/460V	●
10	1800	215TC	01018XP3ER215TC	1,618	X1	211	12.80	90.2	19.450	208-230/460V	●
15	1800	254TC	01518XP3ER254TC	2,111	X1	319	17.90	91.0	23.175	208-230/460V	●
20	1800	256TC	02018XP3ER256TC	2,556	X1	352	24.40	91.0	24.923	208-230/460V	●
25	1800	284TC	02518XP3ER284TC	3,257	X1	503	29.60	92.4	26.407	208-230/460V	● ◆
30	1800	286TC	03018XP3ER286TC	3,692	X1	547	34.40	92.4	27.905	208-230/460V	● ◆
40	1800	324TC	04018XP3ER324TC	4,643	X1	623	47.60	93.0	29.602	208-230/460V	● ◆
50	1800	326TC	05018XP3ER326TC	5,425	X1	720	57.80	93.6	31.106	208-230/460V	● ◆

These models are Round Body design with no feet cast into the housing. They are design to mount C-Flange only

- ELECTRICAL FEATURES ON PAGE B-8.
- MECHANICAL FEATURES ON PAGE B-60.
- = Round Body
- ◆ = Product may not be available from stock

FRACTIONAL HP

GENERAL PURPOSE

NEMA PREMIUM EFFICIENCY

CRUSHER® DUTY

IEC TRU-METRIC™

PUMP MOTORS

DEFINITE PURPOSE

ADD-ON™ MODIFICATIONS

MOTOR TECHNICAL DATA

DRIVES & SOFT STARTERS

CONTROLS