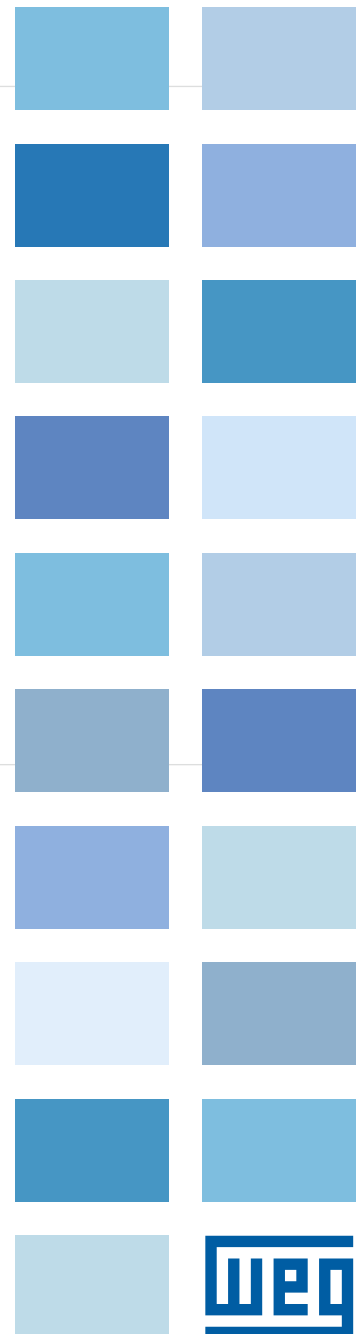
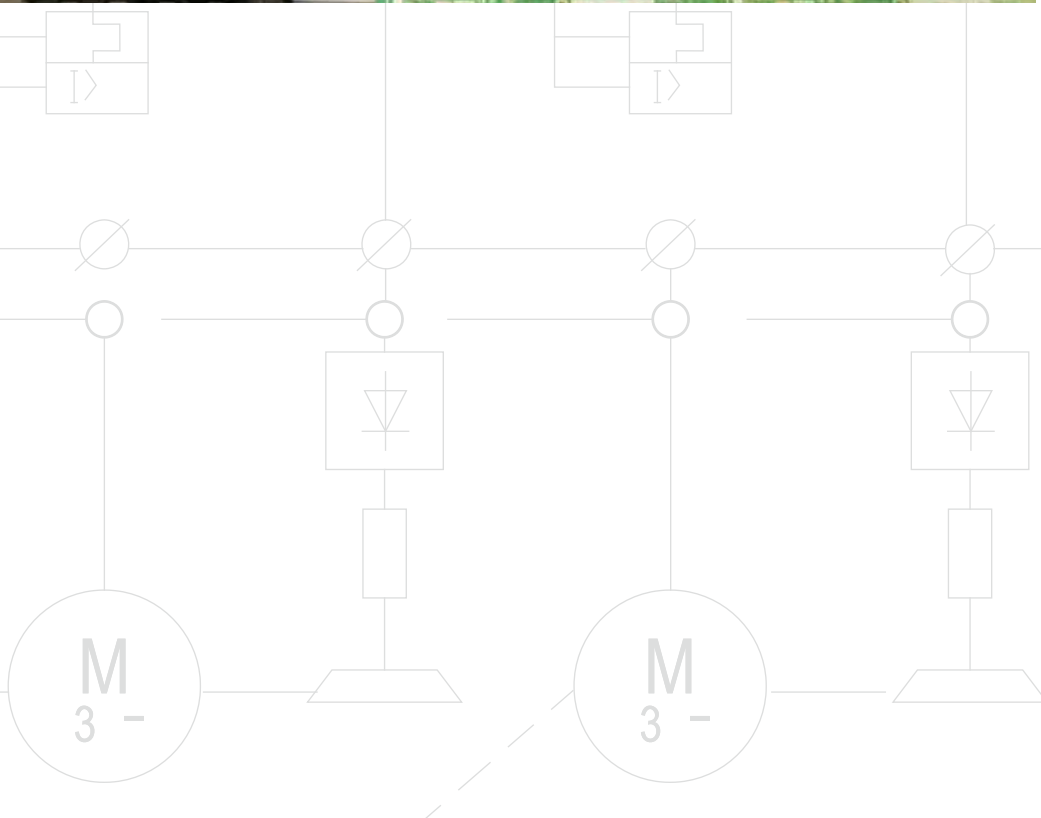
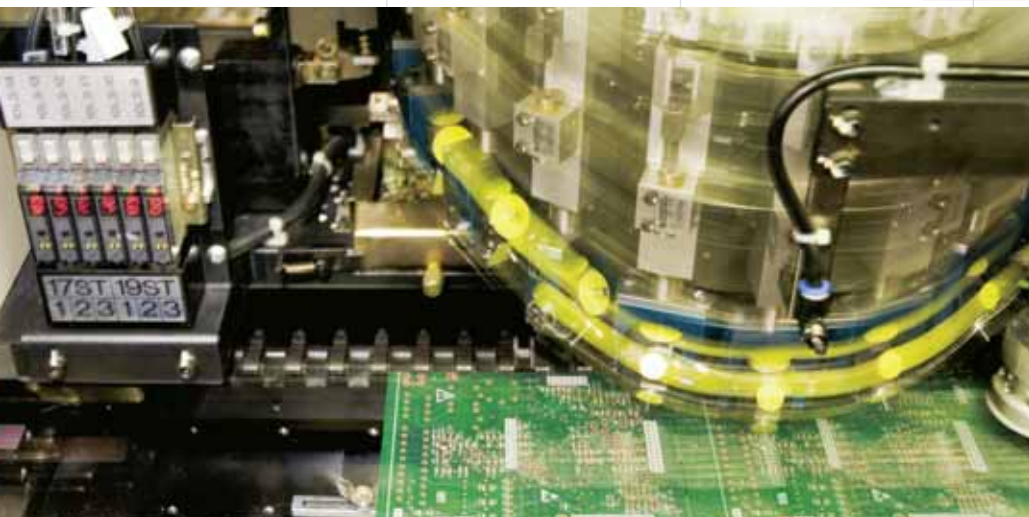


Automation

Drives and Controls



Contactors and Overload Relays

- Complete line (7 to 800A / AC-3)
- Quick mounting on DIN rail 35mm
- Direct mounting on overload relays
- Overload relays with phase failure sensitivity, according to IEC60947-4-1
- Standard, tripping class 10



Accessories and Spare Parts

- Accessories for contactors from 7 to 800A (modular line)
- Four-terminal coils up to 40A
- Coils available in AC and DC voltage
- Spare parts for the whole line (Ex.: contact set)



Mini-Contactor CWC

- AC3 operation up to 25A
- Mini-contactor CWC07 to CWC016 AC and DC coil with the same dimensions
- Allows operation under the AC-4 duty
- Low-consumption DC coil



Easy Connection

- Star-delta wiring kits up to 45kW at 230/240V and 90kW at 400/415V
- Reversing wiring kits up to 22kW at 230/240V and 37kW at 400/415V



Timers and Electronic Monitoring Relays

- RTW timers up to 30 minutes with 9 temporization functions
- RPW electronic monitoring relays for functions: phase loss, phase sequence, phase loss and sequence, under voltage and overvoltage and temperature monitoring with PTC sensor
- RNW level relays – for filling or draining functions



Pushbuttons and Pilot Lights

- Modern and easy to use
- Pilot Light blocks with integrated LED
- Designed according to IEC/EN60974-5-1
- Degree of protection - IP66
- Contacts blocks and flanges with quick and easy mounting system



DOL Starters

- Three-phase and single-phase starters in thermoplastic enclosure



Motor Protective Circuit-Breaker MPW

- Compact solution for electric circuit protection, motor starting/protection up to 45kW at 400/415V
- Adjustable thermal tripping for motor overload protection with a phase failure-sensitivity, according to IEC 60947-4-1, with tripping class 10
- Magnetic tripping (protection against short-circuit) fixed at 12xIn
- High short-circuit breaking capacity



Terminals Screw Type – BTWP Line

- Complete line from 2.5 to 240mm²
- Cable inputs in the shape of a cone to facilitate insertion



Terminals Spring Type – BTWM Line

- 2.5 to 10mm² line
- Stainless steel spring
- Uniform contact pressure



Air Circuit-Breakers ABW

Switching and protection for electrical circuits

- Complete solution for high power circuits protection
- Rated currents up to 5000A
- Available in fixed and withdrawable versions
- High short circuit breaking capacities
- Electronic type protection relays
- Complete line of accessories



Variable Frequency Drives

WEG VFDS incorporate the most advanced world wide technology for speed variation.

CFW08

- Power rating: 0.25 to 20HP (0.18 to 15kW)
- Power supply: 200...240V and 380...480V
- V/Hz (scalar) or sensorless vector control
- Sinusoidal PWM modulation
Space Vector Modulation
- EMC filters (built-in)
- Modbus RTU communication (built-in), CANopen, DeviceNet and Profibus-DP (optional)
- PID regulator
- DSP control
- Remote Human Machine Interface (HMI)



CFW08

CFW09

- Power rating: 1.5 to 1500HP (1.1 to 250kW)
- Power supply: 200...240V, 380...480V and 500...600/690V
- V/Hz (Scalar), sensorless vector or closed loop vector control
- Optimal braking
- 32 Bits RISC microprocessor
- Regenerative converter (optional)
- EMC filters (optional)
- Fieldbus communication: Profibus-DP (optional), DeviceNet (optional), Device Net Drive Profile (optional), METASYS N2 Johnson Controls (optional) and Modbus RTU (built-in)
- IP 20 enclosure up to 500HP (315kW)
- PLC and positioning control functions board
- Optimal flux function - a unique solution providing rated torque at low speeds without forced ventilation or motor oversizing.



CFW09

CFW10

- Power rating: 0.25 to 5HP (0.18 to 2.2kW)
- Power supply: 110...127V and 200...240V
- Rated output voltage: 200...240V
- Single phase power supply
- Sinusoidal PWM modulation - Space Vector Modulation
- Latest generation IGBT modules and electronic circuits with SMD components
- DSP control
- Compact dimensions, simplified installation and operation
- Speed adjustment via potentiometer is available



CFW10

CFW11

- Power rating: 1 to 60HP (0.75 to 45kW)
- Power supply: 200-240V and 380-480V
- Human-machine interface (HMI) with backlight, graphic display and soft-keys, easy use
- Plug-and-play philosophy
- USB connection
- Memory Card built-in
- Great variety of control accessories: I/O expansion boards (digital and analog) Incremental encoder interface and communication
- PLC and Positioning function board
- Communication: Profibus, DeviceNet, CANopen, EtherNet / IP, Modbus RTU (optional)
- Intelligent thermal management
- Protections with failure and alarm warnings
- Normal duty and heavy duty ratings to adapt optimally to all kinds of load



CFW11

Certification



Soft-Starters

WEG soft-starters, microprocessor controlled and fully digital, have been designed to provide high performance in starting and stopping electric motors. The keypad offers a friendly interface for parameter adjustment making the operation much easier.

SSW05

- Power rating: 0.75 to 75 HP (0.55 to 55 kW)
- Power supply: 220 to 575 V
- Built-in by-pass
- DSP control
- Remote keypad (optional)
- Built-in motor protections
- PID regulator
- DSP control
- Ambient Temperature up to 55 C (131° F)



SSW06

- Power rating: 30 to 2650 HP (22 to 1950 kW)
- Power supply: 220 to 575 V
- Built-in by-pass
- Removable HMI with LED and LCD display
- Kick-Start function for loads with high inertia
- Pump control for intelligent pumping system control
- Full digital / 32 bits RISC microcontroller
- Electronic motor protection
- Ambient temperature up to 55 C (131° F)



SSW07

- Power ratings: 6 to 200 HP
- Voltage: 220...575V
- Built-in Bypass
- Built-in EMC filter
- High starting duty cycle
- Three-phase controlled
- Integral motor and starter protections
- Programmable KICK-START function to start high break-away torque loads
- Remote HMI
- Very compact product
- It is able to operate in 55°C without derating

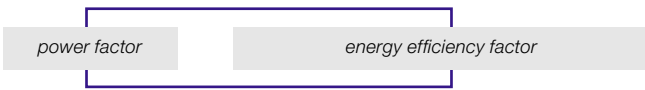


Certification



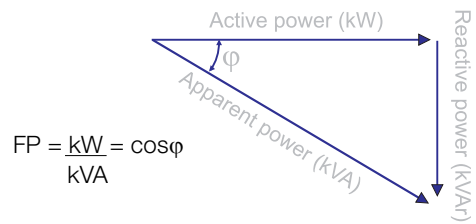


Power Factor Correction



In a three-phase network, three measurements summarize the electrical installation, in a simplified way:

- Active power: kW (generates work)
- Reactive power: kVAr (creates a magnetic field)
- Apparent power: kVA (total power consumed)

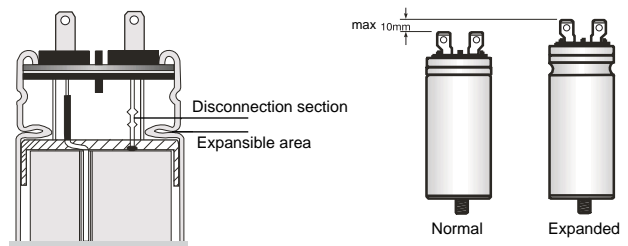


$$FP = \frac{kW}{kVA} = \cos\phi$$

The more kvar that circulates through the network and transformer/generator, the greater the consumed kVA value and the lower the power factor.

WEG Capacitors for Power Factor Correction

- Self-healing metalized polypropylene film
- Internal over pressure security device
- Maximum allowed fault current of 10kA
- Dielectric losses smaller than 0,4 W/kVAr
- Internal discharge resistors in three-phase units, modules and banks
- Designed in accordance with standards IEC 60831-1/2 and UL810



Power Factor Correction



UCW (Single-phase Capacitors)

- Rated power up to 6,67 kVAr in 380/440/480Vac
- Capacitive units for mounting of capacitors banks



Contactors for Capacitor Switching

- Available for the switching of capacitors up to 50kVAr/400/415V
- Same accessories used with CWM contactors line
- Integrated pre-charge resistors with early-make contacts block



MCW (Three-phase capacitors module)

- Rated power up to 60 kVAr in 380/440/480Vac
- Single-phase capacitors UCW connected in delta
- Equipped with discharge resistors (30s, 1/10Un)



BCW and BCWP (Three-phase capacitors bank)

- Rated power up to 75 kVAr in 380/440/480Vac
- Three-phase capacitors bank BCW composed by capacitive cells assembled in metallic enclosure with degree of protection IP32 and used for power factor correction of duty loads.
- Equipped with discharge resistors (30s, 1/10 Un) and terminal blocks for power source.
- BCW-P is composed basically by capacitors UCW, CWM contactors for switching capacitive loads, electronic timer relay RTW-RE to avoid resetting of capacitors on load and moulded case circuit breaker or fuse delay for short circuit protection.



UCWT (Three-phase capacitive unit)

- Ideal for local/individual motor correction:
 - 0,5 a 15 kVAr at 220Vac
 - 0,5 a 25 kVAr at 380/440/480Vac
- Internally built-in discharge resistors
- Protection cover for connections
- Fast-on and Philips type terminals



AC Film Capacitors Motor Run and Lighting Applications

- CMRW line for motor run applications(IEC 60252-1)
- CILW and CLAW for lighting applications (IEC 61048)
- High confiability
- Self-Realing properties
- Low dissipation factor
- Reduced sized



Automation Systems



Servo drives SCA05

- Rated current: 4, 8, 24 and 30A
- Torque / speed / positioning mode
- Encoder simulator: 1 to 4096 pulses per revolution
- Speed Analog Reference (14 bits)
- Built-in CANopen, Modbus and Devicenet networks
- Profibus DP (optional)
- High performance RISC 32 bit microcontroller
- Built-in RS 232 Serial Communication or optional RS 485
- Automatic cycle with 10 positioning programmed via parameter
- Optional remote interface

Servomotors

- Torque: 1.6 up to 50 Nm
- IP 65 protection degree
- Brushless
- Resolver feedback
- Low inertia
- Low maintenance
- Low level of noise and vibration

Softwares for product specifications

SDW – special tool to help on WEG softstarters specifications main features and advantages:

- SDW uses the WEG motors data bank to help the filling of the forms
- SDW has the basic thechnick characteristics of the main applications (curve, datas, etc)
- SDW allows the specification of softstarters considering several starting conditions and presenting the results with softstarter model and parameter list to its start up



Automation Systems

Pushbuttons and Pilot Lights



Low Voltage VFDs from 0.18 to 1100 kW



Capacitors for Power Factor Correction



Soft-Starters from 0,5 to 1950 kW



Contactors and Overload Relays



AC Servomotors and Servodrives 1,6 to 50 Nm



Motor Protective Circuit Breaker



Modular Drive from 315 to 2500 kW



Timers and Electronic Monitoring Relays



LV Distribution Panels



DOL Starters



MV Frequency Drives from 400 up to 3.312 kW



WEG Worldwide Operations

ARGENTINA

WEG EQUIPAMIENTOS
ELECTRICOS S.A.
(Headquarters San
Francisco-Cordoba)
Sgo. Pampiglione 4849
Parque Industrial San Francisco
2400 - San Francisco
Phone(s): +54 (3564) 421484
Fax: +54 (3564) 421459
wegee@weg.com.ar
www.weg.com.ar

AUSTRALIA

WEG AUSTRALIA PTY. LTD.
3 Dalmore Drive
Carribean Park Industrial Estate
Scoresby VIC 3179 - Melbourne
Phone(s): 61 (3) 9765 4600
Fax: 61 (3) 9753 2088
sales@weg.com.au
waa.weg.com.br

BELGIUM

WEG EUROPE S.A.
Rue de l'Industrie 30 D,
1400 Nivelles
Phone(s): + 32 (67) 88-8420
Fax: + 32 (67) 84-1748
info@wegeurope.be
www.wegeurope.be

CHILE

WEG CHILE S.A.
Los Canteros 8600
La Reina - Santiago
Phone(s): (56-2) 784 8900
Fax: (56-2) 784 8950
wegchile@weg.net
www.wegchile.cl

CHINA

WEG (NANTONG) ELECTRIC
MOTOR MANUFACTURING Co., Ltd.
No. 128 - Xinkai Nan Road,
Nantong Economic and
Technological Development Area
Jiangsu Province, China PC226010
Phone(s): 86 513 8598 9329
Fax: 86 513 8592 1310
www.wegchina.com

COLOMBIA

WEG COLOMBIA LTDA
Calle 46A N82 - 54
Portería II - Bodega 7 - San
Cayetano II - Bogotá
Phone(s): (57 1) 416 0166
Fax: (57 1) 416 2077
wegcolombia@weg.com.co
www.weg.com.co

FRANCE

WEG FRANCE SAS
ZI de Chenes - Le Loup
13 Rue du Morellon - BP 738
38297 Saint Quentin Fallavier
Phone(s): +33 (0) 4 74 99 11 35
Fax: +33 (0) 4 74 99 11 44
services@wegfrance.fr
www.wegfrance.fr

GERMANY

WEG GERMANY GmbH
Alfred-Nobel-Str. 7-9
D-50226 Frechen
Phone(s): +49 (2234) 9 5353-0
Fax: +49 (2234) 9 5353-10
info@weg-germany.de
wg.weg.com.br

INDIA

WEG Electric (India) Pvt. Ltd.
#38, Ground Floor, 1st Main
Road, Lower Palace Orchards,
Bangalore - 560 003
Phone(s): +91-80-4128 2007
+91-80-4128 2006
Fax: +91-80-2336 7624
weg-india@weg.net
www.wegindia.com

ITALY

WEG ITALIA S.R.L.
V.le Brianza 20 - 20092 - Cinisello
Balsamo - Milano
Phone(s): (39) 02 6129-3535
Fax: (39) 02 6601-3738
info@wegitalia.com
wit.weg.com.br

JAPAN

WEG ELECTRIC MOTORS
JAPAN CO., LTD.
Matsumoto Bldg. 2F, 3-23-7
Kamata, Ohta-ku,
Tokyo, Japan 144-0052
Phone(s): (81) 3 3736-2998
Fax: (81) 3 3736-2995
motor@weg.co.jp
wj.weg.com.br

MEXICO

WEG MEXICO, S.A. DE C.V.
Carretera Jorobas-Tula Km. 3.5,
Manzana 5, Lote 1
Fraccionamiento Parque
Industrial - Huehuetoca,
Estado de México - C.P. 54680
Phone(s): + 52 (55) 5321 4275
Fax: + 52 (55) 5321 4262
wegmex@weg.com.mx
www.weg.com.mx

NETHERLANDS

WEG NETHERLANDS
Sales Office of
WEG Europe S.A.
Keulenstraat 4E
7418 ET Deventer
Phone(s): +31 (0) 570-620550
Fax: +31 (0) 570-620560
info@weg-netherlands.nl
www.weg-netherlands.nl

PORTUGAL

WEG EURO - INDÚSTRIA
ELÉCTRICA, S.A.
Rua Eng. Frederico Ulrich
Apartado 6074
4476-908 - Maia
Phone(s): +351 229 477 705
Fax: +351 229 477 792
sales-wpt@weg.net
www.weg.net

RUSSIA

WEG RUSSIA
17, Pochainskaya Str.
Nizhny Novgorod
603001 - Russia
Phone(s): +7-831-2780424
Fax: +7-831-2780425

SPAIN

WEG IBERIA S.A.
Avenida de la Industria,25
28823 Coslada - Madrid
Phone(s) : (34) 916 553 008
Fax : (34) 916 553 058
wegiberia@wegiberia.es
www.wegiberia.es

SINGAPORE

WEG SINGAPORE PTE LTD
159, Kampong Ampat,
#06-02A KA PLACE.
Singapore 368328.
Phone(s): +65 6858 9081
Fax: +65 6858 1081
wegsg@weg.net
www.weg.com.sg

SWEDEN

WEG SCANDINAVIA AB
Box 10196
Verkstadgatan 9
434 22 Kungsbacka
Phone(s): (46) 300 73400
Fax: (46) 300 70264
info@weg.se
www.weg.se

UK

WEG ELECTRIC
MOTORS (U.K.) LTD.
28/29 Walkers Road
Manorside Industrial Estate
North Moons Moat - Redditch
Worcestershire B98 9HE
Phone(s): 44 (01527) 596-748
Fax: 44 (01527) 591-133
wegsales@wegelectricmotors.co.uk
wuk.weg.com.br

UNITED ARAB EMIRATES

WEG MIDDLE EAST FZE
JAFZA - JEBEL ALI FREE ZONE
Tower 18, 19th Floor,
Office LB181905
Dubai - United Arab Emirates
giovanik@weg.net

USA

WEG ELECTRIC
MOTORS CORP.
1327 Northbrook Parkway,
Suite 490
Suwanee 30024
Phone(s): 1-770-338-5656
Fax: 1-770-338-1632
www.wegelectric.com

VENEZUELA

WEG INDUSTRIAS
VENEZUELA C.A.
Parcela T-4-A Transversal 9 Urb.
Industrial Carabobo Catastral
79-101 Edf. ELIMECA Loc.
ELIMECA, Zona Postal 2003,
Valencia, Edo. Carabobo
Phone(s): 58 (241) 838 9239
Fax: 58 (241) 838 9239
weg-wve@weg.com.ve
www.weg.com.br



WEG Equipamentos Elétricos S.A.
International Division
Av. Prefeito Waldemar Grubba, 3000
89256-900 - Jaraguá do Sul - SC - Brazil
Phone: 55 (47) 3276-4002
Fax: 55 (47) 3276-4060
www.weg.net

