



PürFlo™ SS 304 and 316L Stainless Steel Single Cartridge

Behringer's PürFlo™ SS Series Filters are specifically designed with hygienic applications in mind. Constructed of 304 or 316L grade stainless steel, they meet strict FDA regulations for food and beverage contact. Behringer's housing design accepts standard process filter elements for added versatility and increased filtration options. Typical applications include chemicals, pharmaceuticals, food products, beverages, water, and petrochemicals. When used in conjunction with Behringer's high efficiency process filter elements, the SS Series Filters can be used as stand-alone filtration units, or as pre-filters to expensive membrane filters such as reverse osmosis (RO) systems. No binders or lubricants are used in the manufacturing process.

Applications

- Pharmaceutical
- Potable Water
- Juices / Beverages
- RO Pre-filters
- Aggressive Chemicals
- Food Processing
- Food Products
- Coolants
- Waste Effluent
- Photography Chemicals

Features and Benefits

- 304 and 316L stainless steel models available to accommodate strict high-purity requirements.
- Standard 3/4 inch or 1 inch NPT Connections
- One-Piece bowl construction for quick and easy element replacement, or optional two-piece bowl for maximum cleanability in high-purity and wash-down areas.
- Accepts industry standard process filter elements with 2.5 in. OD and 1.06 in. ID, in nominal sizes to 40 inches.
- Meets strict FDA requirements for contact with food and beverage products
- Standard vent screw in head allows housing to be vented during re-pressurization
- Standard housing drain allows for removal of fluid for cleaner cartridge change-outs
- Time saving options such as T-handle, petcock, and mounting brackets ease installation and maintenance procedures.

Specifications

Recommended Operating Conditions

Type:	PürFlo™ Inline T-Type
Connections:	3/4" and 1" NPTF
Max Operating Pressure:	250 psi (17 bar) ¹
Max Operating Temperature:	250° F (122° C) ²
Recommended Flow Rate:	
5 in.	2.5 gpm (9.5 lpm)
10 in.	5 gpm (19 lpm)
20 in.	10 gpm (38 lpm)
30 in.	15 gpm (57 lpm)
40 in.	20 gpm (76 lpm)

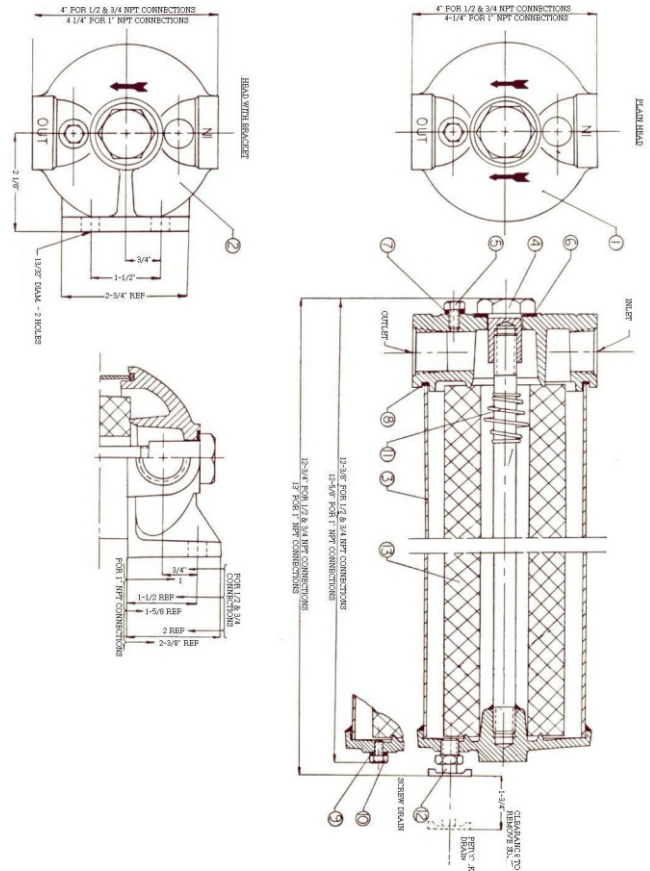
Materials of Construction

Housing:	304 or 316L Stainless Steel
Seal Materials:	Buna-N (standard) Silicone, Viton, EPR, Encapsulated Teflon (on request)

Cartridge Specifications

Cartridge OD:	2.50 in. (63.5mm)
Cartridge ID:	1.06 in. (27mm)
Cartridge Ends:	Double open end
Cartridge Lengths:	5 in.: 4.875 in. (124 mm) 10 in.: 9.875 in. (251 mm) 20 in.: 19.875 in. (505 mm) 30 in.: 30.0 in. (762 mm) 40 in.: 40.0 in. (1016 mm)

- 1.) Max operating pressure of 250 psi is at ambient temperature of 70° F (21° C).
- 2.) Max operating temperature is dependant on the standard Buna seals. Other seals are available for different operating temperatures. Please consult Behringer for proper application of seal materials.



Ordering Information

Table 1 Table 2 Table 3 Table 4 Table 5

SS

Style <small>Table 1</small>	
T	304 Stainless
X	316L Stainless

Length <small>Table 2</small>	
5	4.875 in. (124 mm)
10	10.0 in. (248 mm)
20	20.0 in. (508 mm)
30	30.0 in. (762 mm)
40	40.0 in. (1016 mm)

Connections <small>Table 3</small>	
T5	3/4" NPT Female
T6	1" NPT Female

Seals <small>Table 4</small>	
B	Buna-N
N	Neoprene
V	Viton
E	EPR
T	Teflon
F	Hard Fiber

Options <small>Table 5</small>	
B	Bracket
P	Petcock (brass)
T	T-Handle

The information contained in this document is provided as an aid in properly selecting products and/or options. It is intended to be used by technically experienced users for general reference only. The supplier assumes no responsibility or liability for the accuracy or completeness of this document, as well as results obtained by the use of this information. Due to the variety of possible operating conditions, it is highly recommended that the user make their own tests to determine the safety and suitability of all products and combinations thereof. The user is solely responsible for final determination of such conditions.