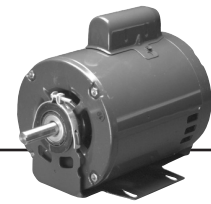


Capacitor Start Belted Fan & Blower Open Dripproof



APPLICATIONS:

Designed for use on belted fans and blowers.

FEATURES:

- 40°C Ambient
- Class A Insulation
- Reversible Rotation
- Suitable For All Angle Operation (Within Blower Housing)
- Automatic Reset Thermal Overload Protector (unless noted)
- Threaded Conduit Hole, Except 299
- Discount Symbol: DS-3HAC

Resilient Base

HP	RPM	Volts	NEMA Frame	Catalog Number	List Price	Bearings	Amps	Shaft Length	Shaft Dia.	Protector	Total Length	SF	Ship Wgt.	Notes
1/3	1725	115/208-230	48	180	\$145	Slv	6.0/3.0	1.5	.500	Auto	9.9	1.35	20	
1/2	3450	115/208-230	48	298	\$158	Slv	8.6/4.3	1.5	.500	Auto	9.9	1.25	16	
	1725	115/208-230	56	1790	\$208	Slv	7.4/3.7	1.9	.625	Auto	9.3	1.25	22	
3/4	3450	115/208-230	48	430	\$203	Slv	9.2/4.6	1.5	.500	Auto	10.4	1.25	22	
	1725	115/208-230	56	1893	\$236	Slv	11.4/5.7	1.9	.625	Auto	10.8	1.25	27	
1	3450	115/208-230	48Z	431	\$204	Slv	11.6/5.8	1.9	.625	Auto	11.3	1.25	22	
	1725	115/230	56	3187C	\$253	Slv	14.0/7.0	1.9	.625	Auto	11.8	1.25	29	1
	1725	115/208-230	56	1769	\$251	Slv	14.0/7.0	1.9	.625	Auto	11.8	1.25	30	
1 (1/3)	1725/1140	115	56	8454	\$268	Ball	11.2/7.8	1.9	.625	Auto	11.9	1.15	33	2
1-1/2	3450	115/230	56	299	\$229	Ball	17.0/8.5	1.9	.625	Auto	11.9	1.15	32	
	1725	115/208-230	56	4242	\$341	Ball	22.4/11.2	1.9	.625	Auto	12.8	1.15	35	
2	3450	115/208-230	56	399	\$238	Ball	18.4/10.1-9.2	1.9	.625	Auto	12.8	1.15	37	2

Rigid Base

HP	RPM	Volts	Catalog Number	List Price	SF	"C" Dim. (inches)	Full Load Amps	Shaft Length	Shaft Dia.	Ship Wgt.	Notes
1/3	1800	115/230	2012	\$276	1.25	10.4	6.8/3.4	2.86	.625	20	61, LA

Note 1 Canadian Standard — Connected CCWLE (Reversible)
 Note 2 Capacitor Start, Capacitor Run

Note 61 Sleeve Bearings
 Note LA Limited Availability