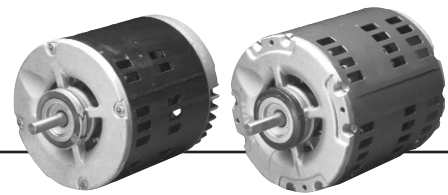


Split Phase Evaporative Cooler

6.3" Diameter, Open Dripproof



APPLICATIONS:

Designed for use on evaporative cooling units.

FEATURES:

- Re-Oilable Bearings
- Class B Insulation
- CW Rotation Shaft End
- Zinc-Phosphate Stator Studs And Nuts
- Corrosion Resistant Rotor Core And Actuator Assembly
- Industry Standard Hub To Hub Dimension
- Automatic Reset Thermal Overload Protector
- Discount Symbol: DS-3HAC



NOTE: Base Kit #51 and Mounting Clamp Kit #52 available. See pg. XX-XX.

Single Speed

HP	RPM	Volts	NEMA Frame	Catalog Number	List Price	Bearings	Amps	Shaft Length	Shaft Dia.	Protector	Total Length	SF	Ship Wgt.	Notes
1/3	1725	115	56Z	7094	\$136	Slv	6.0	1.6	.500	Auto	9.4	1	15	1
	1725	115	56Z	6764	\$128	Slv	6.6	1.6	.500	Auto	9.4	1	14	
1/2	1725	115	56Z	7066	\$119		8.5	1.5	.500	Auto	8.9		19	LA
	1725	115	56Z	7095	\$140	Slv	7.9	1.6	.500	Auto	9.4	1	17	1
	1725	115	56Z	6768	\$121	Slv	8.2	1.6	.500	Auto	9.4	1	15	
	1725	230	56Z	6766	\$151	Slv	4.8	1.6	.500	Auto	9.4	1	19	
3/4	1725	115	56Z	7069	\$160		11.9	1.9	0.625	Auto	9.8		22	LA
	1725	115	56Z	7096	\$143	Slv	11.0	1.6	.500	Auto	9.4	1	19	1
	1725	115	56Z	6769	\$128	Slv	10.5	1.6	.500	Auto	9.4	1	18	
	1725	230	56Z	6771	\$161	Slv	5.4	1.6	.500	Auto	9.4	1	20	
1	1725	115/230	56	5149	\$274	Ball	15.1/7.5	1.9	.625	Auto	11.8	1	27	1, 2, 3, 4
1-1/2	1725	115/230	56Z	7072	\$306	Ball	14.5/6.3	2.3	.875	Auto	13.6	1	34	1, 2, 3, 4, LA
2	1725	115/230	56Z	7073	\$315	Ball	19.0/8.5	2.3	.875	Auto	13.6	1	36	1, 2, 3, 4

Two Speed

HP	RPM	Volts	NEMA Frame	Catalog Number	List Price	Bearings	Amps	Shaft Length	Shaft Dia.	Protector	Total Length	SF	Ship Wgt.	Notes
1/3	1750/1140	115	56	7060	\$128	-	6.8/4.5	1.5	0.5	Auto	8.9	-	20	LA
	1725/1140	115	56Z	7097	\$150	Slv	6.4	1.6	.500	Auto	9.4	1	17	1
	1725/1140	115	56Z	6767	\$125	Slv	6.4	1.6	.500	Auto	9.4	1	17	
1/2	1725/1140	115	56Z	7098	\$156	Slv	8.2	1.6	.500	Auto	9.4	1	19	1
	1725/1140	115	56Z	6765	\$126	Slv	8.2	1.6	.500	Auto	9.4	1	16	
	1725/1140	230	56Z	6795	\$163	Slv	4.5	1.6	.500	Auto	9.4	1	19	
3/4	1725/1140	115	56Z	7099	\$179	Slv	10.9	1.6	.500	Auto	9.4	1	19	1
	1725/1140	115	56Z	6770	\$154	Slv	10.9	1.6	.500	Auto	9.4	1	19	
	1725/1140	115	56	7068	\$198	Slv	11.4	1.9	.625	Auto	10.3	1	25	1, 3, 4, LA
	1725/1140	230	56Z	6796	\$190	Slv	5.5	1.6	.500	Auto	9.4	1	19	
1	1725/1140	115	56	2574	\$269	Slv	13.6	1.9	.625	Auto	11.8	1	35	1, 2, 3, 4
	1725/1140	230	56	2423	\$280	Ball	7.2	1.9	.625	Auto	11.8	1	34	1, 2, 3, 4

Three Speed

HP	RPM	Volts	NEMA Frame	Catalog Number	List Price	Bearings	Amps	Shaft Length	Shaft Dia.	Protector	Total Length	SF	Ship Wgt.	Notes
1/2	1725	115	56Z	7065	\$178	-	8.9/6.3/3.2	1.5	0.5	Auto	10.4	-	25	LA

- Note 1 All copper wound
 Note 2 Capacitor start
 Note 3 Reversible rotation by easy reconnection

- Note 4 Includes resilient base
 Note LA Limited Availability