



GP12505 Shown
PSSH Style

Applications: Conveyors, medical and laboratory equipment, printing presses, commercial ovens, machine tools and many other applications requiring adjustable speed.

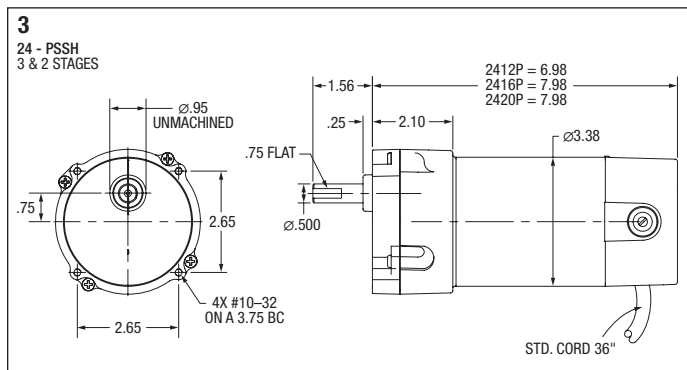
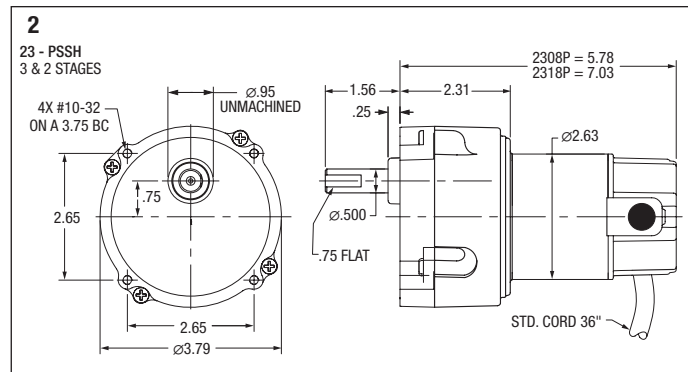
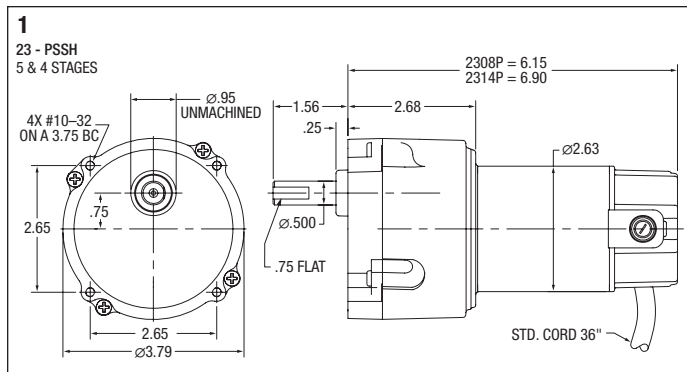
Features: Induction hardened helical and spur gears for extra strength. Ball and needle-bearing construction for improved torque capacity. Factory lubricated for life, no maintenance required. PSSH is face mounted with industry standard dimensions. An optional bolt on base is available for foot mounting, see pages 373 and 409.

	Input Motor Hp	Output Base Speed	Gear Ratio	Stages	Max. Safe Torque In. Lbs.	Catalog Number ^(a)	List Price	Mult. Sym.	Ap'x. Shpg. Wgt.	Motor Type & Gear Style	Voltage D.C. Armature	Full Load Amperage Armature	Notes ^(b)	Drawing Number
Grinders	1/45	9	180:1	4	100	GPP231108	395	DS	8	2308P-PSSH	90	0.29	20	1
	1/21	19	90:1	4	118	GPP232110	395	DS	7	2314P-PSSH	90	0.57	20	1
	1/50	29	60:1	3	40	GPP231109	375	DS	8	2308P-PSSH	90	0.35	20	2
Generators	1/20	30	60:1	3	100	GPP233112	410	DS	8	2318P-PSSH	90	0.70	20	2
	1/17	60	30:1	3	50	GPP233111	410	DS	8	2318P-PSSH	90	0.65	20	2
	1/35	120	20:1	2	9.5	GPP231110	375	DS	8	2308P-PSSH	90	0.36	20	2
	1/12	43	60:1	3	112	GPP12505	455	DS	11	2412P-PSSH	90	1.00	20	3
		58	44:1	3	83	GPP12504	455	DS	11	2412P-PSSH	90	1.00	20	3
125		20:1	2	38.5	GPP12502	433	DS	11	2412P-PSSH	90	1.00	20	3	
115		22:1	2	43	GPP12503	433	DS	11	2412P-PSSH	90	1.00	20	3	
Servo Motors and Controls	250	10:1	2	19.7	GPP12501	433	DS	11	2412P-PSSH	90	1.00	20	3	
	1/22	19	90:1	4	118	GPP233120	410	DS	8	2314P-PSSH	180	0.30	20	1
	1/12	43	40:1	3	112	GPP12525	438	DS	11	2420P-PSSH	180	0.45	20	3
	1/20	60	30:1	3	50	GPP233121	410	DS	8	2318P-PSSH	180	0.35	20	2
	1/12	250	10:1	2	19.7	GPP12521	438	DS	11	2416P-PSSH	180	0.49	20	3

^(a) Vertical motor below gearhead not recommended.

Avoiding those positions where the high speed oil seal is immersed in oil, will provide greater security against high speed input seal wear.

^(b) See notes on inside back flap and pages 5-6.





GPP233141 Shown
PSM Style

Applications: Conveyors, medical and laboratory equipment, printing presses, commercial ovens, machine tools and many other applications requiring adjustable speed.

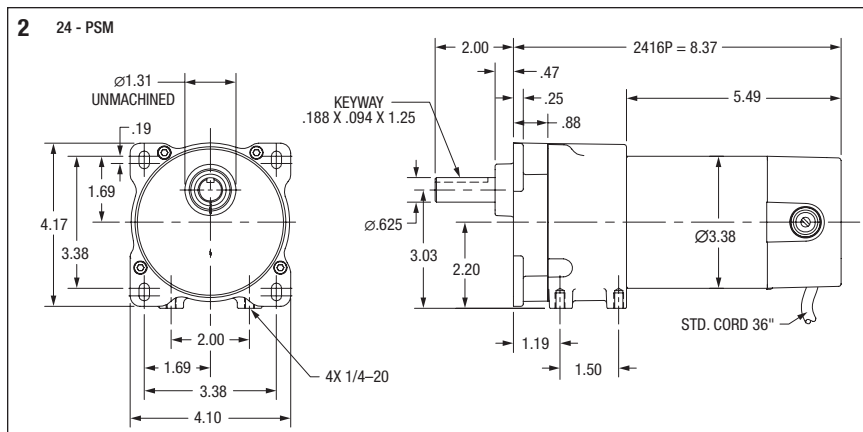
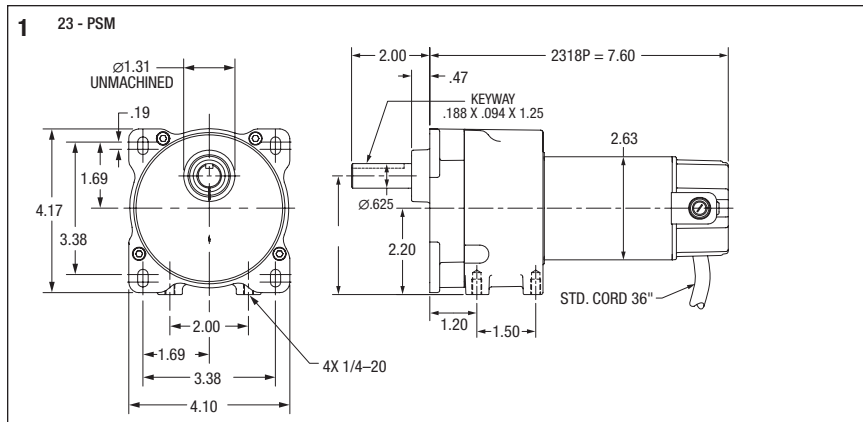
Features: Induction hardened helical and spur gears for extra strength. Ball and needle-bearing construction for improved torque capacity. Factory lubricated for life, no maintenance required. PSM is face or foot mounted with industry standard dimensions. Optional bases are available for foot or 3-point face mounting, see pages 371 and 409.

Input Motor Hp	Output Base Speed	Gear Ratio	Stages	Max. Safe Torque In. Lbs.	Catalog (a) Number	List Price	Mult. Sym.	Ap'x. Shpg. Wgt.	Motor Type & Gear Style	Voltage D.C. Armature	Full Load Amperage Armature	Notes (b)	Drawing Number			
1/16	15.4	120:1	4	197	GPP233141	506	DS	10	2318P-PSM	90	0.66	20	1			
1/15	18.6	90:1	4	180	GPP233140	506	DS	10	2318P-PSM	90	0.77	20	1			
1/8	42	60:1		165	GPP12547	507	DS	12	2416P-PSM	90	1.35	20	2			
	63	40:1		116	GPP12545	507	DS	12	2416P-PSM	90	1.35	20	2			
	83	30:1		90	GPP12544	507	DS	12	2416P-PSM	90	1.35	20	2			
	125	20:1		58	GPP12543	485	DS	12	2416P-PSM	90	1.35	20	2			
	167	15:1		45	GPP12542	485	DS	12	2416P-PSM	90	1.35	20	2			
	250	10:1		30	GPP12541	485	DS	12	2416P-PSM	90	1.35	20	2			
1/8	500	5:1		15	GPP12540	485	DS	12	2416P-PSM	90	1.35	20	2			
	42	60:1		174	GPP12567	489	DS	11	2416P-PSM	180	0.65	20	2			
	83	30:1		87	GPP12564	489	DS	11	2416P-PSM	180	0.65	20	2			
	250	10:1		30	GPP12561	485	DS	11	2416P-PSM	180	0.65	20	2			
				500	5:1		14.8	GPP12560	485	DS	11	2416P-PSM	180	0.65	20	2

(a) Vertical motor below gearhead not recommended.

Avoiding those positions where the high speed oil seal is immersed in oil, will provide greater security against high speed input seal wear.

(b) See notes on inside back flap and pages 5-6.





GPP7459 Shown
PSL Style

Applications: Conveyors, medical and laboratory equipment, printing presses, commercial ovens, machine tools and many other applications requiring adjustable speed.

Features: Induction hardened helical gears for added strength. Ball and needle-bearing construction for improved torque capacity. Factory lubricated for life, no maintenance required. PSL is face mounted with industry standard dimensions. An optional bolt on base is available for foot mounting. See pages 373 and 409.

	Input Motor Hp	Output Base Speed	Gear Ratio	Stages	Max. Safe Torque In. Lbs.	Catalog Number ^(a)	List Price	Mult. Sym.	Ap'x. Shpg. Wgt.	Motor Type & Gear Style	Voltage D.C. Armature	Full Load Amperage Armature	Notes ^(b)	Drawing Number
Grinders	1/8	8.3	300:1	4	330	GPP7459	639	DS	17	2416P-PSL	90	0.76	20	1
	1/8	10.4	240:1	4	330	GPP7462	639	DS	17	2416P-PSL	90	0.71	20	1
	1/4	14	180:1	4	365	GPP7458	639	DS	17	2424P-PSL	90	1.20	20	1
	1/4	21	120:1	4	365	GPP7457	639	DS	17	2424P-PSL	90	1.70	20	1
Generators	1/4	28	90:1	4	390	GPP7461	639	DS	17	2424P-PSL	90	2.25	20	1
	1/4	42	60:1	3	280	GPP7456	614	DS	17	2424P-PSL	90	2.50	20	1
	1/4	50	50:1	3	250	GPP7460	614	DS	17	2424P-PSL	90	2.50	20	1
	1/4	62	40:1	3	200	GPP7455	614	DS	17	2424P-PSL	90	2.50	20	1
	1/4	83	30:1	3	150	GPP7454	614	DS	17	2424P-PSL	90	2.50	20	1
	1/4	125	20:1	2	100	GPP7453	614	DS	17	2424P-PSL	90	2.50	20	2
Servo Motors and Controls	1/4	165	15:1	2	75	GPP7452	564	DS	15	2424P-PSL	90	2.50	20	2
	1/4	250	10:1	2	50	GPP7451	564	DS	17	2424P-PSL	90	2.50	20	2
	1/4	500	5:1	2	25	GPP7450	564	DS	17	2424P-PSL	90	2.50	20	2
	1/3	58	30:1	3	320	GPP2530	839	DS	24	2532P-PSLH	90	3.20	20	3
	1/3	113	15:1	2	164	GPP2534	798	DS	24	2532P-PSLH	90	3.20	20	3
	1/3	345	5:1	2	55	GPP2538	798	DS	24	2532P-PSLH	90	3.20	20	3
Mod Express	1/2	83	30:1	3	337	GPP3340	942	DS	35	3327P-PSLH	90	5.00	20	4
	1/2	167	15:1	2	171	GPP3344	942	DS	35	3327P-PSLH	90	5.00	20	4
	1/2	500	5:1	2	57	GPP3348	901	DS	35	3327P-PSLH	90	5.00	20	4
	1/8	8.3	300:1	4	330	GPP7479	639	DS	17	2424P-PSL	180	0.38	20	1
	1/4	14	180:1	4	365	GPP7478	639	DS	17	2424P-PSL	180	0.60	20	1
	1/4	21	120:1	4	365	GPP7477	639	DS	17	2424P-PSL	180	0.85	20	1
Baldor Education Workshops	1/4	42	60:1	3	280	GPP7476	614	DS	17	2424P-PSL	180	1.25	20	1
	1/4	62	40:1	3	200	GPP7475	614	DS	17	2424P-PSL	180	1.25	20	1
	1/4	83	30:1	3	155	GPP7474	614	DS	17	2424P-PSL	180	1.25	20	1
	1/4	125	20:1	2	100	GPP7473	614	DS	17	2424P-PSL	180	1.25	20	2
	1/4	165	15:1	2	75	GPP7472	564	DS	17	2424P-PSL	180	1.25	20	2
	1/4	250	10:1	2	50	GPP7471	564	DS	17	2424P-PSL	180	1.25	20	2
Warranties and Sales Policies	1/4	500	5:1	2	25	GPP7470	564	DS	17	2424P-PSL	180	1.25	20	2
	1/3	58	30:1	3	320	GPP3370	942	DS	35	3327P-PSLH	180	1.50	20	4
	1/3	115	15:1	2	164	GPP3374	901	DS	35	3327P-PSLH	180	1.50	20	4
	1/3	345	5:1	2	55	GPP3378	901	DS	35	3327P-PSLH	180	1.60	20	4
	1/2	83	30:1	3	337	GPP3380	942	DS	35	3327P-PSLH	180	2.50	20	4
	1/2	167	15:1	2	171	GPP3384	901	DS	35	3327P-PSLH	180	2.50	20	4
Cross Reference and Index	1/2	500	5:1	2	57	GPP3388	901	DS	35	3327P-PSLH	180	2.50	20	4

^(a) Vertical motor below gearhead not recommended.

Avoiding those positions where the high speed oil seal is immersed in oil, will provide greater security against high speed input seal wear.

^(b) See notes on inside back flap and pages 5-6.

