



GCP24114 Shown  
PSSH Style

**Applications:** Conveyors, packaging machines, machine tools and laboratory equipment requiring constant speed.

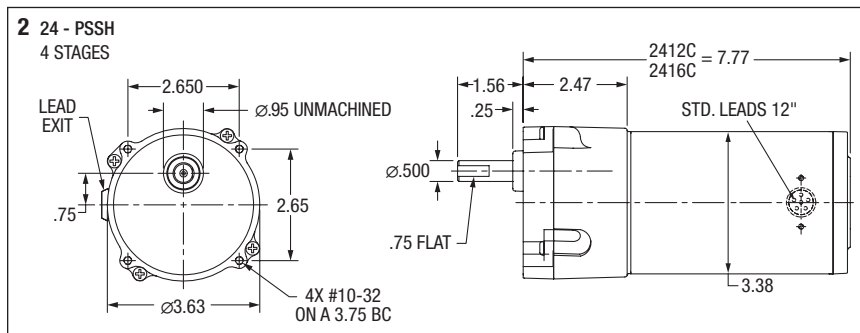
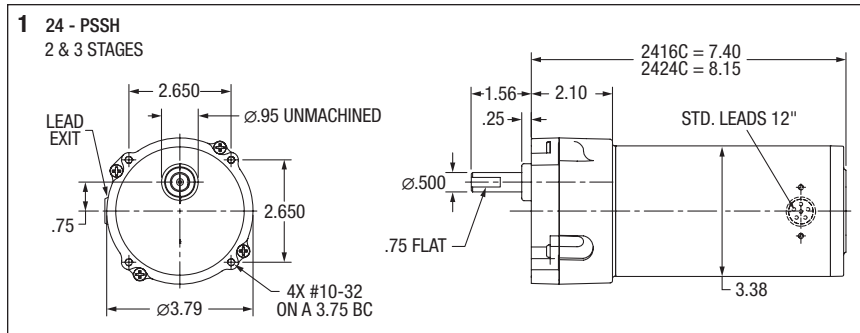
**Features:** Induction hardened helical and spur gears for extra strength. Ball and needle-bearing construction for improved torque capacity. Factory lubricated for life, no maintenance required. Industry standard dimensions. See optional mounting bracket on pages 373 and 409.

Input Motor Hp	Output RPM 50/60 Hz.	Gear Ratio	Stages	Max. Safe Torque In. Lbs.	Catalog (a) Number	List Price	Mult. Sym.	Ap'x. Shpg. Wgt.	Motor Type & Gear Style	Enclosure	Voltage	Notes (b)	Drawing Number
<b>Single Phase</b>													
1/40	7.6/9.4	180:1	4	120	<b>GCP24114</b>	407	DS	10	2412C-PSSH	TENV	115	19,20,78	2
1/25	15.3/18	90:1	4	120	<b>GCP24122</b>	410	DS	10	2416C-PSSH	TENV	115	19,20,78	2
	23/27.3	60:1	3	80.7	<b>GCP24124</b>	410	DS	10	2416C-PSSH	TENV	115	19,20,78	1
1/12	45/54.8	30:1	3	83.7	<b>GCP24134</b>	394	DS	10	2424C-PSSH	TENV	115	19,20,78	1
	68/82.5	20:1	2	55.8	<b>GCP24136</b>	394	DS	10	2424C-PSSH	TENV	115	19,20,78	1
	90/109	15:1	2	42.8	<b>GCP24138</b>	394	DS	10	2424C-PSSH	TENV	115	19,20,78	1
	136/163	10:1	2	28.5	<b>GCP24140</b>	394	DS	10	2424C-PSSH	TENV	115	19,20,78	1
	272/326	5:1	2	14.3	<b>GCP24142</b>	394	DS	10	2424C-PSSH	TENV	115	19,20,78	1

(a) Vertical motor below gearhead not recommended.

Avoiding those positions where the high speed oil seal is immersed in oil, will provide greater security against high speed input seal wear.

(b) See notes on inside back flap and pages 5-6.





GCP24232 Shown  
PSM Style

**Applications:** Conveyors, packaging machines, machine tools and laboratory equipment requiring constant speed.

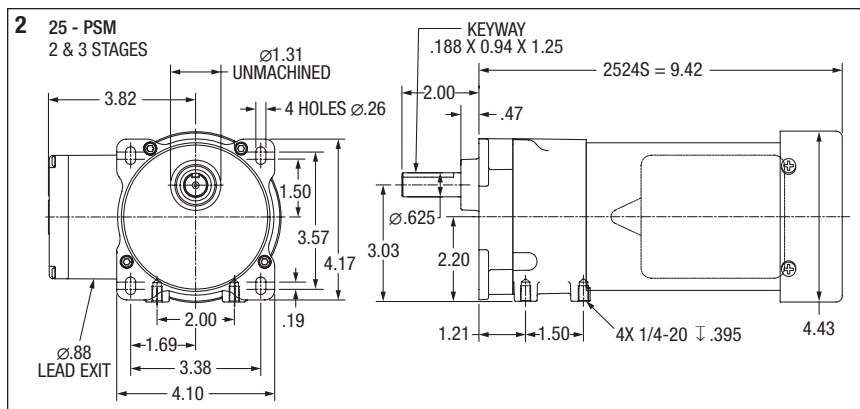
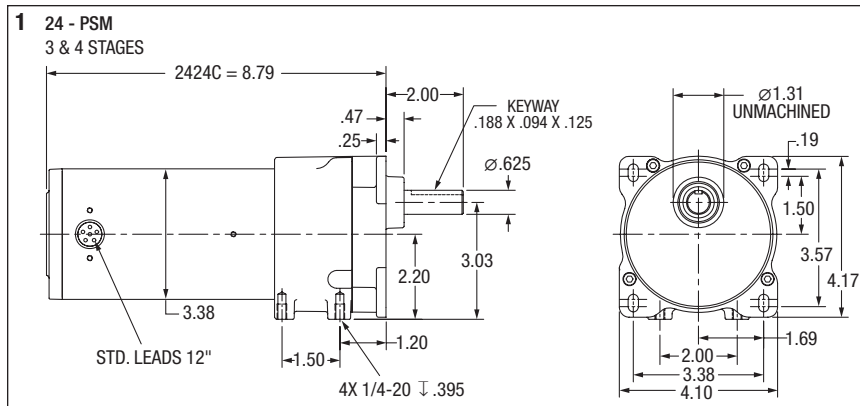
**Features:** Induction hardened helical and spur gears for extra strength. Ball and needle-bearing construction for improved torque capacity. Factory lubricated for life, no maintenance required. Industry standard dimensions. Optional bases for foot or 3-point face mounting, see below.

Input Motor Hp	Output RPM 50/60 Hz.	Gear Ratio	Stages	Max. Safe Torque In. Lbs.	Catalog Number <sup>(a)</sup>	List Price	Mult. Sym.	Ap'x. Shpg. Wgt.	Motor Type & Gear Style	Enclosure	Voltage	Notes <sup>(b)</sup>	Drawing Number
<b>Single Phase</b>													
1/15	15/18	90:1	4	237	<b>GCP24232</b>	473	DS	14	2424C-PSM	TENV	115	19,20,78	1
1/12	23/27	60:1	3	167	<b>GCP24234</b>	447	DS	14	2424C-PSM	TENV	115	19,20,78	1
1/9	43/36	40:1	3	149	<b>GCP25052</b>	451	DS	14	2524S-PSM	TENV	115	19,20	2
	47/57	30:1	3	112	<b>GCP25054</b>	451	DS	14	2524S-PSM	TENV	115	19,20	2
	84/70	20:1	3	74	<b>GCP25056</b>	429	DS	14	2524S-PSM	TENV	115	19,20	2
	92/111	15:1	2	57	<b>GCP25058</b>	429	DS	14	2524S-PSM	TENV	115	19,20	2
	138/166	10:1	2	38	<b>GCP25060</b>	429	DS	14	2524S-PSM	TENV	115	19,20	2
	275/330	5:1	2	19	<b>GCP25062</b>	429	DS	14	2524S-PSM	TENV	115	19,20	2

(a) Vertical motor below gearhead not recommended.

Avoiding those positions where the high speed oil seal is immersed in oil, will provide greater security against high speed input seal wear.

(b) See notes on inside back flap and pages 5-6.



### PSM Mounting Adapters



**B92** is formed steel mounting base that bolts to machined surface on bottom of PSM gear box casting. Provides secure foot mounting of gearmotor and drop-in interchangeability with other major manufacturers.

**B93** is a three point face mounting adapter. Provides interchangeability with other manufacturers.

Catalog Number	Description	List Price	Mult. Sym.	Ap'x. Shpg. Wgt.
<b>B92</b>	Foot Mount	33	A8	1
<b>B93</b>	3 Point Face Mount	42	A8	1



PSL Style

**Applications:** Conveyors, packaging machines, machine tools and laboratory equipment requiring constant speed.

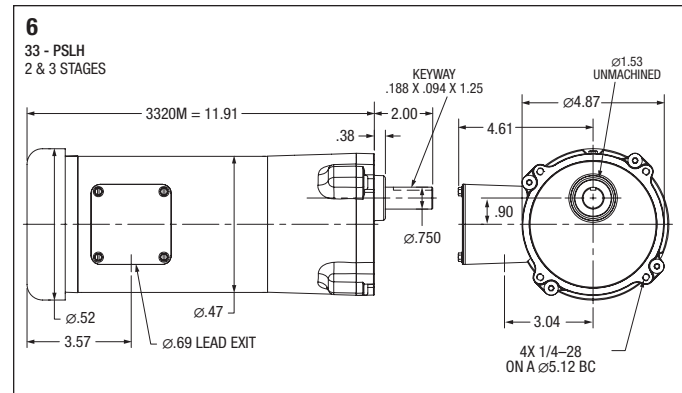
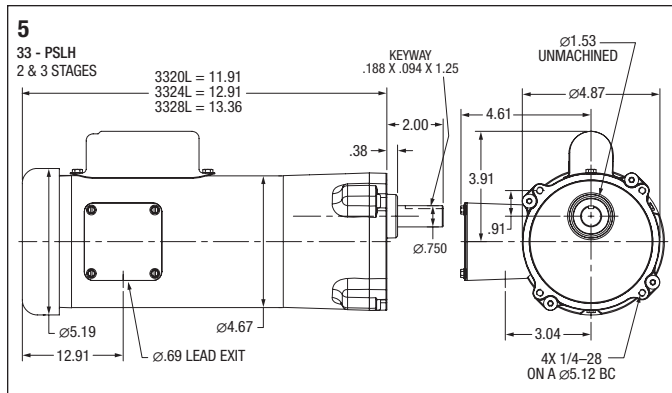
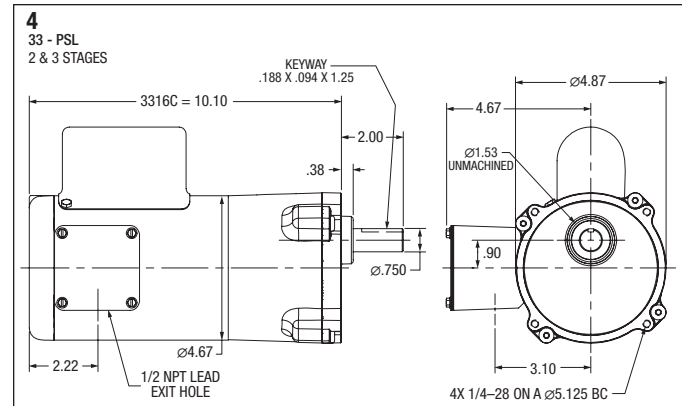
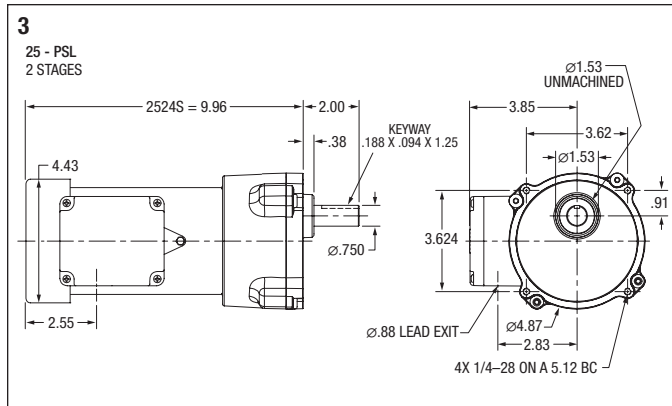
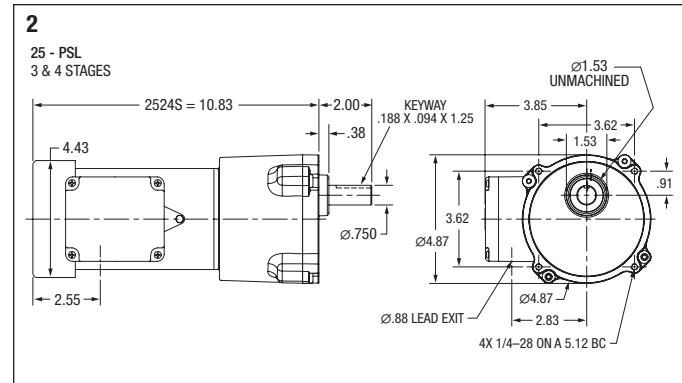
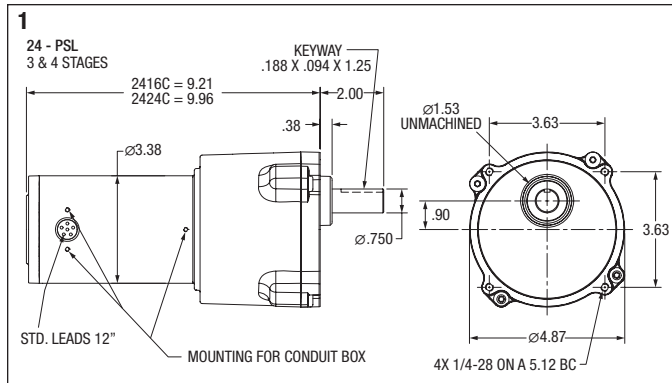
**Features:** Three and single-phase. Induction hardened helical gears for added strength. Ball and needle-bearing construction for improved torque capacity. Factory lubricated for life, no maintenance required. Industry standard dimensions. An optional bolt-on base is available for foot mounting on pages 373 and 409.

Input Motor Hp	Output RPM 50/60 Hz.	Gear Ratio	Stages	Max. Safe Torque In. Lbs.	Catalog (a) Number	List Price	Mult. Sym.	Ap'x. Shpg. Wgt.	Motor Type & Gear Style	Enclosure	Voltage	Notes (b)	Drawing Number
<b>Single Phase</b>													
1/25	4.5/5.5	300:1	4	325	<b>GCP24002</b>	607	DS	15	2416C-PSL	TENV	110//115	19,20,78	1
	7.6/9.1	180:1	4	235	<b>GCP24004</b>	607	DS	15	2416C-PSL	TENV	110//115	19,20,78	1
1/12	11/13.7	120:1	4	330	<b>GCP24020</b>	655	DS	15	2424C-PSL	TENV	110//115	19,20,78	1
	15/18.2	90:1	4	250	<b>GCP24022</b>	587	DS	15	2424C-PSL	TENV	110//115	19,20,78	1
1/8	23/28	60:1	3	270	<b>GCP25002</b>	637	DS	18	2524S-PSL	TEFC	110//115	19,20	2
	45/55	30:1	3	135	<b>GCP25004</b>	637	DS	18	2524S-PSL	TEFC	110//115	19,20	2
	71/85	20:1	2	92	<b>GCP25006</b>	614	DS	18	2524S-PSL	TEFC	110//115	19,20	3
	141/170	10:1	2	46	<b>GCP25008</b>	614	DS	18	2524S-PSL	TEFC	110//115	19,20	3
	283/340	5:1	2	23	<b>GCP25010</b>	614	DS	18	2524S-PSL	TEFC	110//115	19,20	3
	58	30:1	3	164	<b>GCP3305</b>	644	DS	24	3316C-PSL	TENV	115	33	4
1/6	86	20:1	2	112	<b>GCP3310</b>	620	DS	24	3316C-PSL	TENV	115	33	4
	173	10:1	2	56	<b>GCP3315</b>	620	DS	24	3316C-PSL	TENV	115	33	4
<b>Capacitor Start - Single Phase</b>													
1/4	29	60:1	3	483	<b>GLP3310</b>	696	DS	25	3320L-PSLH	TEFC	115/208-230	33	5
1/3	35	50:1	3	438	<b>GLP3328</b>	724	DS	25	3324L-PSLH	TEFC	115/208-230	20,33	5
	57.5	30:1	3	320	<b>GLP3330</b>	724	DS	25	3324L-PSLH	TEFC	115/208-230	20,33	5
	86.3	20:1	2	218	<b>GLP3332</b>	681	DS	25	3324L-PSLH	TEFC	115/208-230	20,33	5
	172.5	10:1	2	109	<b>GLP3336</b>	681	DS	25	3324L-PSLH	TEFC	115/208-230	20,33	5
	345	5:1	2	55	<b>GLP3338</b>	681	DS	25	3324L-PSLH	TEFC	115/208-230	20,33	5
1/2	58	30:1	3	484	<b>GLP3342</b>	764	DS	25	3328L-PSLH	TEFC	115/208-230	20,33	5
	88	20:1	2	326	<b>GLP3344</b>	720	DS	25	3328L-PSLH	TEFC	115/208-230	20,33	5
	117	15:1	2	245	<b>GLP3346</b>	720	DS	25	3328L-PSLH	TEFC	115/208-230	20,33	5
	175	10:1	2	164	<b>GLP3348</b>	720	DS	25	3328L-PSLH	TEFC	115/208-230	20,33	5
<b>Three Phase</b>													
1/3	57	30:1	3	320	<b>GMP3330</b>	717	DS	27	3320M-PSLH	TEFC	208-230/460	33	6
	86	20:1	2	218	<b>GMP3332</b>	674	DS	27	3320M-PSLH	TEFC	208-230/460	33	6
	173	10:1	2	109	<b>GMP3336</b>	674	DS	27	3320M-PSLH	TEFC	208-230/460	33	6
	345	5:1	2	55	<b>GMP3338</b>	674	DS	27	3320M-PSLH	TEFC	208-230/460	33	6
1/2	43	40:1	3	627	<b>GMP3340</b>	757	DS	27	3320M-PSLH	TEFC	208-230/460	33	6
	58	30:1	3	484	<b>GMP3342</b>	757	DS	27	3320M-PSLH	TEFC	208-230/460	33	6
	86	20:1	2	326	<b>GMP3344</b>	714	DS	27	3320M-PSLH	TEFC	208-230/460	33	6
	173	10:1	2	164	<b>GMP3348</b>	714	DS	27	3320M-PSLH	TEFC	208-230/460	33	6

(a) Vertical motor below gearhead not recommended.

Avoiding those positions where the high speed oil seal is immersed in oil, will provide greater security against high speed input seal wear.

(b) See notes on inside back flap and pages 5-6.



### "L" Type Mounting Brackets



**Applications:** Mounting bracket for PSSH and PSL gear motors. Securely mounts to gear face in 90 degree locations for floor, wall or ceiling mount. Catalog LB74 is not recommended for PSL/PSLH units weighing over 20 lbs. For units weighing more than 20 lbs. use LB75.

Catalog Number	List Price	Mult. Sym.	Ap'x. Shpg. Wgt
LB73	33	A8	2
LB73GR	33	A8	10
LB74	47	A8	2
LB75	66	A8	1

**NOTE:** Painted Baldor gray. LB73 & LB73GR for PSSH style gearmotors, LB74 & LB75 for PSL/PSLH style gearmotors.