

Easy to Maintain

LKBC-2 Butterfly Valve

Application

LKBC-2 is a sanitary, manually operated butterfly valve which is used as a shut-off valve when needing a valve easily dismantled for cleaning and inspection, eg. on farm milk tanks.

Working principle

The valve is manually operated by a handle. A disc closes against a rubber seal when the handle is at right angles to the pipeline. The disc is parallel to the product flow, when the handle is turned 90°. The valve is then fully open.

Standard design

The valve body is made of two separate halves assembled by a clamp. A specially designed rubber seal is fixed between the two halves and a profiled disc closes against the seal. The LKBC-2 valve has a handle in stainless steel, which by the use of the standard locking cover ensures that the valve can be securely locked in the closed position.

Materials

Steel parts: Stainless steel AISI 304.
 Seal: Silicone (Q)
 Finish: Semi bright.

Size

Welding end: 51 mm (2"), DN 50.
 Male part: 51 mm (2"), DN 50, DN 40.

Connections

LKBC-2 is available with the following end connection combinations:

- ISO Expanding-ISO Expanding.
- ISO Expanding-SMS male part.
- ISO Expanding-DIN DN 50 male part.
- ISO Expanding-DIN DN40 male part.

- ISO Welding end-ISO Weld end.
- ISO Welding end-SMS male part.
- ISO Welding end-DIN DN 50 male part.
- ISO Welding end-DIN DN 40 male part.

- DIN Welding end-DIN Weld end.
- DIN Welding end-DIN DN 50 male part.
- DIN Welding end-DIN DN 40 male part.

- 3A Male part-Clamp liner.

Note!

Other combinations incl. DS and BS standards can be supplied on request.



Fig. 1. LKBC-2, Butterfly valve.

Technical data

Max. product pressure (20°C): 300 kPa (3 bar).
 Min. product pressure (20°C): Full vacuum.
 Temperature range: -10°C to 95°C.

Options

Material grades

- A) End cap of Noryl for male parts.
- B) Product wetted seals of EPDM and Viton (FPM).

Ordering

Please state the following when ordering:

- Butterfly valve type LKBC-2.
- Connections, if not welding ends.
- End cap, if required.
- Rubber type.

Dimensions (mm)

Length A	Welding end	Exp. end	Male part	Male part DN 40	Clamp	Internal diameter	D
Welding end	34	40	48	79	40	Weld. end ISO	48.5
Exp. end	40	46	54	85	46	Weld. end DIN	50
Male part	48	54	62	93	54	Exp. end	51
Male part DN 40	79	85	93	124	85	Male	48.5
Clamp end	40	46	54	85	46	Male DN 40	38

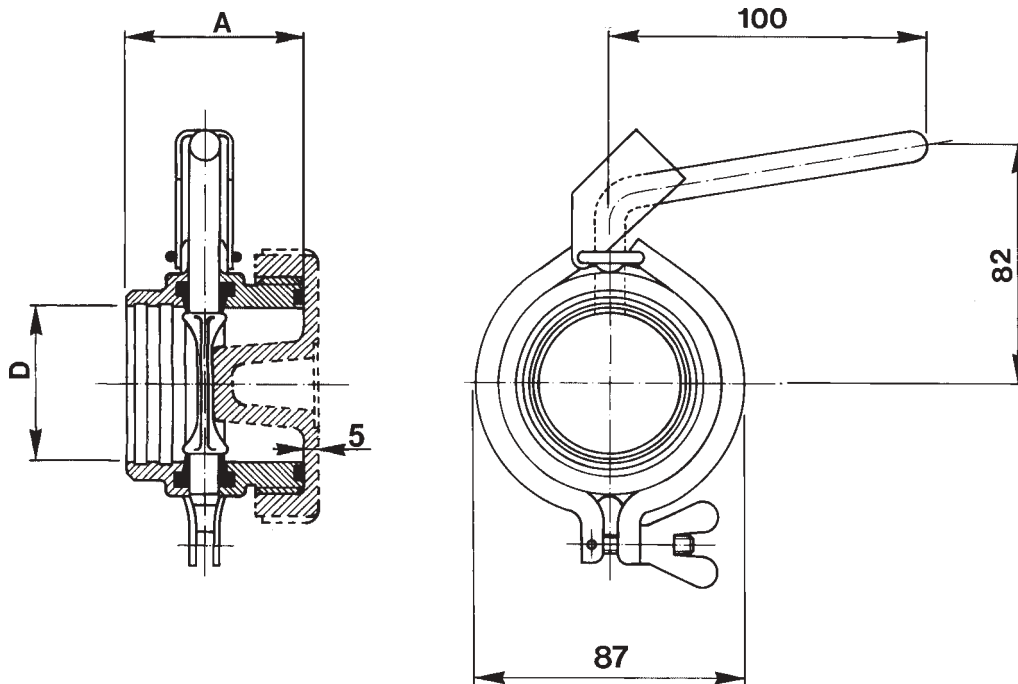


Fig. 2. Dimensions.

Note! For further details, see also PD 65036.