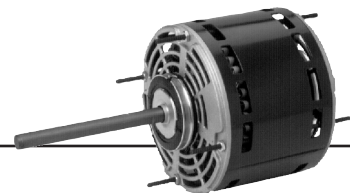


# Permanent Split Capacitor Direct Drive Fan & Blower

## 5.6" Diameter, Open, Air Over, High Efficiency

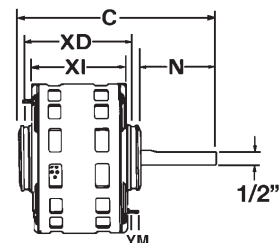


### APPLICATIONS:

Designed for use on direct drive fan & blowers.

### FEATURES:

- Reversible Unless Noted
- Class B Insulation
- Sleeve Bearings Have All Angle Thrust System
- Continuous Duty, Air Over
- Designed For Use With 370V Capacitors
- 36" Line Leads Unless Otherwise Noted
- High Efficiency Economizer® Motors
- Automatic Reset Thermal Overload Protector
- Connection And Capacitor Information Furnished In The Nameplate Data
- When Furnished, The Capacitor And Its Mounting Hardware Is Supplied Detached
- 2.5" Dia. Hub Rings Included – See Notes
- Discount Symbol: DS-3HAC



### Stud or Hub Ring Mount (2.5"), Single Speed

HP	RPM/ Spds.	Volts	Catalog Number	List Price	Bearings	Cap MFD	Amps	Shaft N	Base XD	Shell XI	Total C	Stud YM	Ship Wgt.	Notes	OEM
1/3	825	208-230	6873	\$181	Ball	5.0	3.0	4.5	6.4	5.8	11.4	N/A	17	1	

### Stud or Hub Ring Mount (2.5"), Two Speed, Sleeve Bearings

HP	RPM/ Spds.	Volts	Catalog Number	List Price	Cap MFD	Amps	Shaft N	Base XD	Shell XI	Total C	Stud YM	Ship Wgt.	Notes	OEM
1/4	825/2	208-230	5468	\$166	7.5	2.0	3.5	-	4.3	7.8	-	16	7, 9, LA	RH
	1075/2	115	3197	\$166	5.0	3.9	5.0	4.9	4.4	10.4	0.75			
	1075/2	208-230	3198	\$166	5.0	1.8	5.0	4.9	4.4	10.4	0.75		LA	
1/3	1075/2	115	3199	\$170	7.5	5.0	5.0	5.2	4.7	10.7	0.75		LA	
	1075/2	208-230	3200	\$170	5.0	2.4	5.0	4.9	4.3	10.4	0.75		LA	
1/2	825/2	208-230	3183	\$238	10.0	3.9	4.0	6.2	5.6	10.7	0.80	23	2, 3	
	1075/2	115	3201	\$238	7.5	8.0	6.0	5.7	5.1	12.2	0.75		LA	
	1075/2	208-230	3202	\$238	7.5	3.3	5.0	5.9	5.3	11.4	0.75		LA	
3/4	1075/2	115	3203	\$330	10.0	11.8	4.0	6.0	5.4	10.4	0.75		LA	
	1075/2	208-230	3204	\$330	7.5	5.5	5.0	6.0	5.4	11.4	0.75		LA	

### Stud or Hub Ring Mount (2.5"), Two Speed, Ball Bearings

HP	RPM/ Spds.	Volts	Catalog Number	List Price	Cap MFD	Amps	Shaft N	Base XD	Shell XI	Total C	Stud YM	Ship Wgt.	Notes	OEM
1/4	1625/2	460	8944	\$279	5.0	0.8	6.0	N/A	4.6	10.6	0.8	13		
1/3	1075/2	460	8945	\$320	5.0	1.3	6.0	5.3	4.8	11.9	0.8	14	3	
1/2	1625/2	460	8946	\$325	7.5	1.4	6.0	N/A	5.3	11.3	0.8	20		
3/4	1075/2	460	8947	\$330	20.0	2.1	6.0	6.1	5.6	12.7	0.8	21	3	

### Stud or Hub Ring Mount (2.5"), Three Speed

HP	RPM/ Spds.	Volts	Catalog Number	List Price	Bearings	Cap MFD	Amps	Shaft N	Base XD	Shell XI	Total C	Stud YM	Ship Wgt.	Notes	OEM
3/4	1075/3	460	8056	\$314	Slv	20.0	2.3	2.5	5.8	5.3	8.4		19	7	LE
1	1100/3	460	2553	\$220	Slv	25.0	3.3	3.5	-	6.8	10.3	N/A	20	5, 7	YK

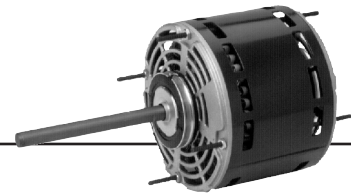
- Note 1 50" Line Leads  
 Note 2 5/8" Shaft Adapter, 24" Leads  
 Note 3 Includes Capacitor Unmounted  
 Note 4 CCWLE, Non-Reversible, Hubless, 21" Leads  
 Note 5 Band Mount

- Note 6 2.25" Dia. Hub Rings With Kit For 2.5" Included  
 Note 7 Not Economizer®  
 Note 8 2.5" Hub Rings  
 Note 9 Includes 4 Holes In Shell For Rheem®† Mount  
 Note LA Limited Availability

† All non-Emerson Electric Co. marks shown within this document are properties of their other respective owners.

# Permanent Split Capacitor Direct Drive Fan & Blower

## 5.6" Diameter, Open, Air Over, High Efficiency



### APPLICATIONS:

Designed for use on direct drive fan & blowers.  
Discount Symbol: DS-3HAC

### Four Speed

HP	RPM/ Spds.	Volts	Catalog Number	List Price	Bearings	Cap MFD	Amps	Shaft N	Base XD	Shell XI	Total C	Stud YM	Ship Wgt.	Notes	OEM
1/6	1075/4	115	5825	\$95	Slv	4.0	2.2	6.0	4.6	4.1	11.1	1.5	11	6	
	1075/4	208-230	5826	\$96	Slv	5.0	1.1	6.0	4.6	4.1	11.1	1.5	11	6	
1/4	1075/4	115	5830	\$96	Slv	5.0	3.8	6.0	4.9	4.4	11.4	1.5	12	6	
	1075/4	208-230	5831	\$98	Slv	5.0	1.8	6.0	4.9	4.4	11.4	1.5	12	6	
1/3	1075/4	115	5835	\$108	Slv	7.5	4.6	6.0	5.4	4.9	11.9	1.5	13	6	
	1075/4	208-230	5836	\$109	Slv	6.0	2.3	6.0	5.2	4.7	11.7	1.5	13	6	
1/2	1075/4	115	5840	\$116	Slv	7.5	7.1	6.0	5.8	5.3	12.4	1.5	19	6	
	1075/4	208-230	5841	\$124	Slv	7.5	3.3	6.0	5.6	5.1	12.2	1.5	19	6	
3/4	900/4	115	1125	\$225	Slv	10.0	11.9	4.0	-	6.6	10.6	-	20	5, 7	IC
	1075/4	115	5845	\$150	Slv	15.0	10.6	6.0	6.2	5.7	12.7	1.5	20	6	
	1075/4	115	3275	\$163	Ball	40.0	10.0	2.5	5.9	5.4	8.9	-	17	8	LE
	1075/4	115	5463	\$118	Ball	15.0	10.6	5.0	-	5.8	10.8	-	20	7, 9	RH
	1075/4	208-230	5846	\$156	Slv	10.0	5.1	6.0	6.2	5.7	12.7	1.5	20	6	
1	1100/4	208/230	4670	\$216	Slv	20.0	6.0	5.0	-	6.3	11.3	-	20	5, 7	IC
	1075/4	208-230	5851	\$216	Slv	-	5.9-5.6	4.0	-	-	12.9	-	-	LA	

Note 1 50" Line Leads  
 Note 2 5/8" Shaft Adapter, 24" Leads  
 Note 3 Includes Capacitor Unmounted  
 Note 4 CCWLE, Non-Reversible, Hubless, 21" Leads  
 Note 5 Band Mount

Note 6 2.25" Dia. Hub Rings With Kit For 2.5" Included  
 Note 7 Not Economizer®  
 Note 8 2.5" Hub Rings  
 Note 9 Includes 4 Holes In Shell For Rheem® Mount  
 Note LA Limited Availability

† All non-Emerson Electric Co. marks shown within this document are properties of their other respective owners.