

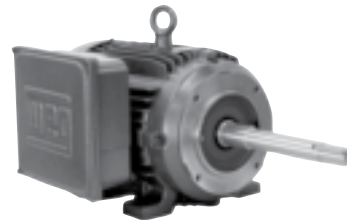
CLOSE COUPLED PUMP MOTORS



JM

TEFC – SINGLE PHASE

WEG single-phase totally enclosed motors are specifically designed for operating in environments of dirt, dust and excess moisture. Starting capacitors, all cast iron frames, rigid bases, reversible shaft rotation and oversized ball bearings are all standard features. NEMA-T, NEMA 48 & 56 AND IEC METRIC FRAMES ARE ALSO AVAILABLE.



JP

APPLICATIONS

- Pumps

STANDARD FEATURES

- Single-phase, II and IV pole 60Hz
- Voltage: 208-230/460V
- Cast iron frame
- Squirrel cage rotor / Aluminum die cast
- Totally Enclosed Fan Cooled - TEFC (IP55)
- Ball bearings
- NEMA dimensions
- Class 'F' insulation
- Service Factor: 1.15
- Continuous Duty (S1)
- 104°F (40°C) ambient temperature
- Altitude: 3300 ft (1000 m)
- 1045 carbon steel shaft
- F1 mount
- Stainless steel nameplate
- Paint: Enamel alkyd resin base
- Color: RAL 7022 (Dark Gray)
- NPT threaded terminal box
- Automatic drain plugs

OPTIONAL FEATURES

- Special voltages
- Specially designed shaft
- Second shaft end
- Thermistors or thermostats
- Drip cover (canopy) for shaft down applications
- Stainless steel shaft
- Flange mount

All motors are tested according to IEEE 112 Std. – Method 'B' or C390 CSA.



- FRACTIONAL HP
- GENERAL PURPOSE
- NEMA PREMIUM EFFICIENCY
- CRUSHER® DUTY
- IEC TRU-METRIC™
- PUMP MOTORS
- DEFINITE PURPOSE
- ADD-ON™ MODIFICATIONS
- MOTOR TECHNICAL DATA
- DRIVES & SOFT STARTERS
- CONTROLS

CLOSE COUPLED PUMP MOTORS



"JM" TYPE - TEFC - SINGLE PHASE

HP	RPM	NEMA Frame	Catalog Number	List Price	Mult. Sym.	Approx. Shipp. Weight Lbs	FL Amps 460V	FL Eff. %	"C" Dimension (in.)	Voltage	Notes
0.5	3600	143JM	.5036ES1E143JM	668	P1	26	1.70	71.3	15.458	208-230/460V	
1	3600	143JM	00136ES1E143JM	682	P1	33	2.90	74.5	15.458	208-230/460V	
	1800	143JM	00118ES1E143JM	687	P1	37	2.85	69.8	15.458	208-230/460V	
1.5	3600	143JM	00156ES1E143JM	729	P1	37	3.60	81.3	15.458	208-230/460V	
	1800	145JM	00158ES1E145JM	754	P1	49	3.50	76.8	16.458	208-230/460V	
2	3600	145JM	00236ES1E145JM	770	P1	45	4.45	86.2	16.458	208-230/460V	
	1800	145JM	00218ES1E145JM	814	P1	54	4.50	79.6	16.458	208-230/460V	
3	3600	145JM	00336ES1E145JM	1,076	P1	52	6.50	80.0	16.458	208-230/460V	
	3600	145JM	00336ES1C145JM	1,076	P1	52	6.50	80.0	16.458	208-230V	
	1800	184JM	00318ES1E184JM	1,182	P1	131	7.25	77.2	17.368	208-230/460V	
5	3600	184JM	00536ES1E184JM	1,457	P1	115	10.5	83.0	17.368	208-230/460V	
	3600	184JM	00536ES1C184JM	1,457	P1	115	10.5	83.0	17.368	208-230V	
	1800	184JM	00518ES1E184JM	1,430	P1	153	10.5	79.4	17.368	208-230/460V	
7.5	3600	213JM	00736ES1E213JM	1,641	P1	139	16.0	84.0	18.904	208-230/460V	
	3600	213JM	00736ES1C213JM	1,641	P1	139	16.0	84.0	18.904	208-230V	
	1800	215JM	00718ES1E215JM	1,762	P1	168	17.0	82.0	20.400	208-230/460V	
10	3600	215JM	01036ES1E215JM	2,172	P1	172	19.5	86.3	20.400	208-230/460V	
	3600	215JM	01036ES1C215JM	2,172	P1	172	19.5	86.3	20.400	208-230V	
	1800	215JM	01018ES1E215JM	2,057	P1	179	20.0	83.0	20.400	208-230/460V	

• ELECTRICAL FEATURES ON PAGE B-32.



"JP" TYPE - TEFC - SINGLE PHASE

HP	RPM	NEMA Frame	Catalog Number	List Price	Mult. Sym.	Approx. Shipp. Weight Lbs	FL Amps 460V	FL Eff. %	"C" Dimension (in.)	Voltage	Notes
0.5	3600	143JP	.5036ES1E143JP	668	P1	26	1.70	71.3	18.519	208-230/460V	
1	3600	143JM	00136ES1E143JP	682	P1	33	2.90	74.5	15.458	208-230/460V	
	1800	143JP	00118ES1E143JP	687	P1	37	2.85	69.8	18.519	208-230/460V	
1.5	3600	143JP	00156ES1E143JP	729	P1	37	3.60	81.3	18.519	208-230/460V	
	1800	145JP	00158ES1E145JP	754	P1	49	3.50	76.8	19.519	208-230/460V	
2	3600	145JP	00236ES1E145JP	770	P1	45	4.45	86.2	19.519	208-230/460V	
	1800	145JP	00218ES1E145JP	814	P1	54	4.50	79.6	19.519	208-230/460V	
3	3600	145JP	00336ES1E145JP	1,076	P1	52	6.50	80.0	19.519	208-230/460V	
	1800	184JP	00318ES1E184JP	1,182	P1	131	7.25	77.2	20.429	208-230/460V	
5	3600	184JP	00536ES1E184JP	1,457	P1	115	10.5	83.0	20.429	208-230/460V	
	1800	184JP	00518ES1E184JP	1,430	P1	153	10.5	79.4	20.429	208-230/460V	
7.5	3600	213JP	00736ES1E213JP	1,641	P1	139	16.0	84.0	22.776	208-230/460V	
	1800	215JP	00718ES1E215JP	1,762	P1	168	17.0	82.0	24.272	208-230/460V	
10	3600	215JP	01036ES1E215JP	2,172	P1	172	19.5	86.3	24.272	208-230/460V	
	1800	215JP	01018ES1E215JP	2,057	P1	179	20.0	83.0	24.272	208-230/460V	

• ELECTRICAL FEATURES ON PAGE B-32.

FRACTIONAL HP

GENERAL PURPOSE

NEMA PREMIUM EFFICIENCY

CRUSHER® DUTY

IEC TRU-METRIC™

PUMP MOTORS

DEFINITE PURPOSE

ADD-ON™ MODIFICATIONS

MOTOR TECHNICAL DATA

DRIVES & SOFT STARTERS

CONTROLS