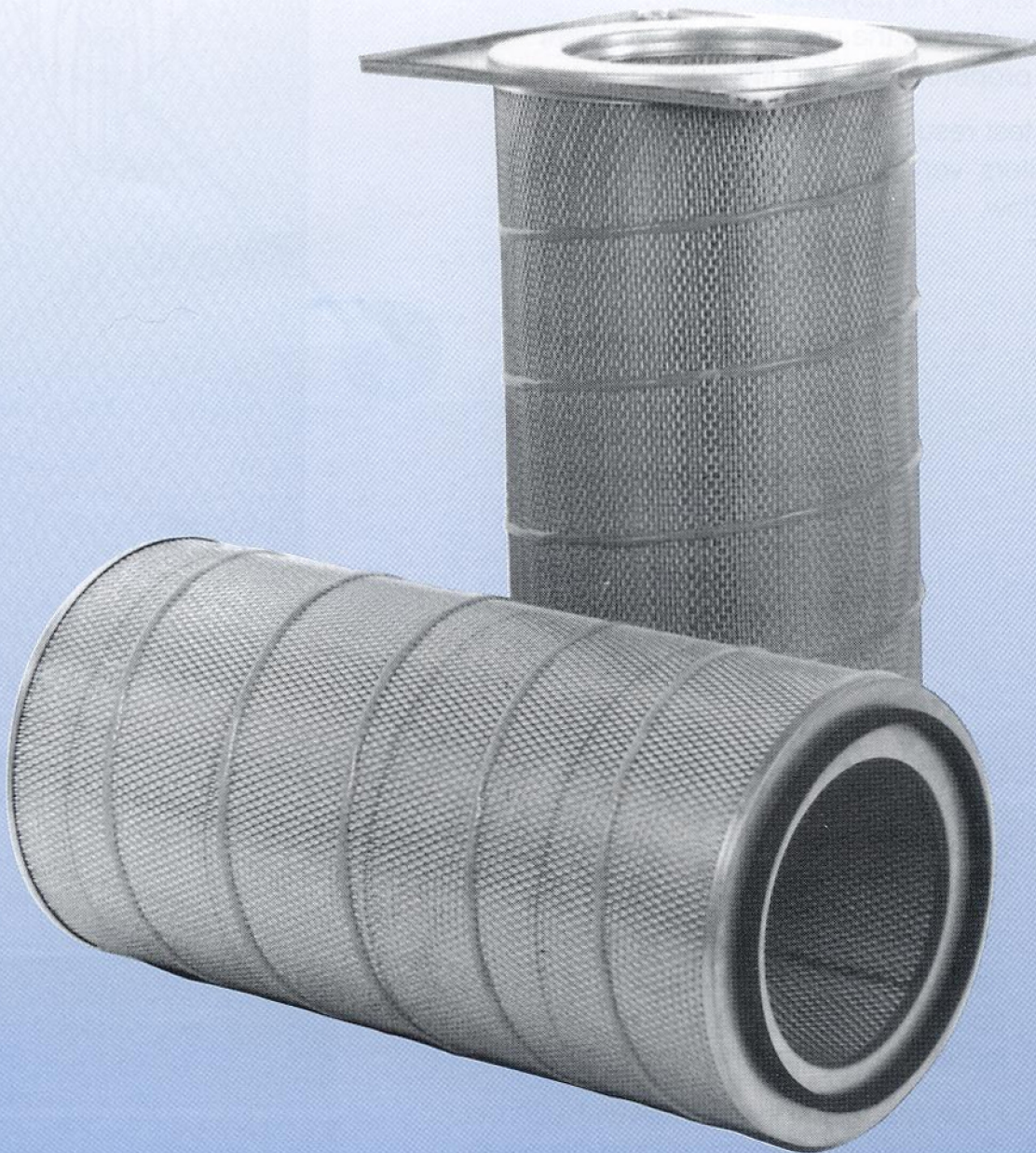


BEHRINGER®



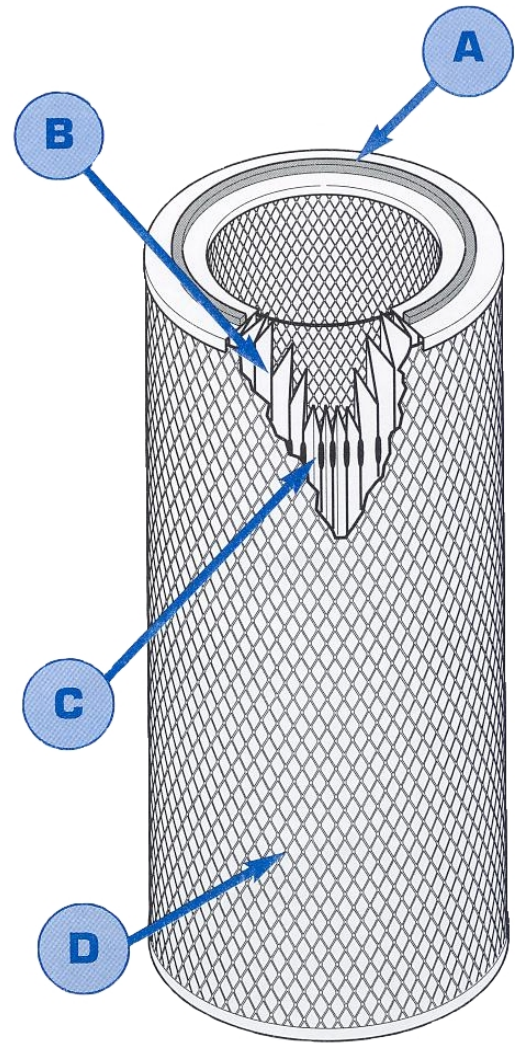
DUST COLLECTOR ELEMENTS

Dust Collector Media

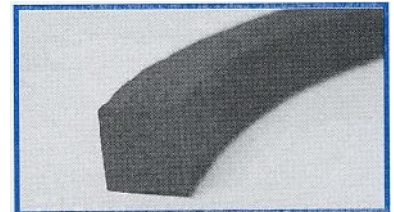
Behringer manufactures a wide range of replacement dust collector cartridges to fit all popular makes and models of equipment. The cartridges feature the heavy duty construction that you have come to expect from Behringer, resulting in elements that can withstand even the most rigorous use. Our media utilizes a specific blend of organic and synthetic fibers with exceptional abrasion resistance and burst strength.

The media is water repellent, which yields superior performance in humid environments and outdoor installations. Polyester fibers on the media surface attribute to excellent cake-release properties. These two functions create a completely washable and re-usable element.

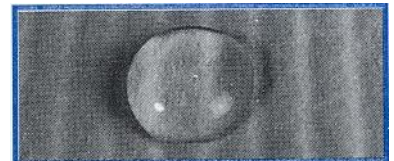
Independent test results confirm the Behringer filter's high efficiency, and low restriction of flow.



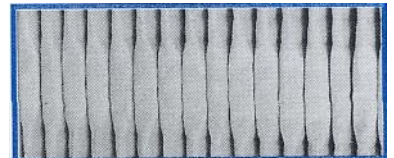
A Our gasket material is specifically formulated to maintain sealing integrity. It has excellent compression-set resistance: <2% per ASTM D3574



B The filtration media is Hydrophobic for better dimensional stability in high humidity or outdoor applications. It is also washable for longer service life and better value.



C Pleat spacing is kept consistent with our "bump pleat" embossed onto the pleat apex. This assures uniform media utilization, and better unloading on back-pulse



D The pleat pack is protected with a corrosion-resistant expanded-meta outer cage. The extra-large diamond pattern has 77% open area, resulting in better flow and unloading characteristics.

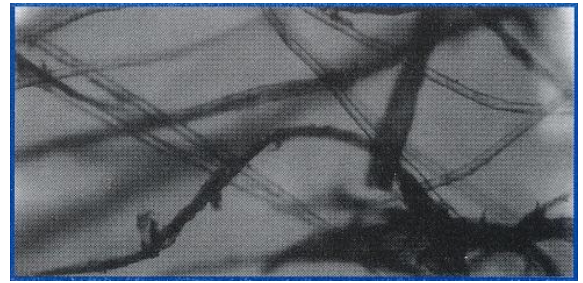


Dust Collector Media

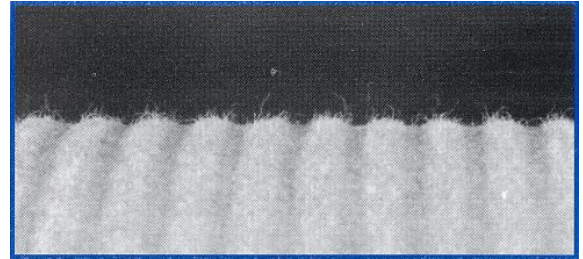
Behringer's dust collector media is unique to the industry. It is a proprietary blend of cellulose and polyester fibers, bonded with a low-energy hydrophobic resin. It has an extremely Mullen Burst rating, for incredible resistance to abrasion and rupture.

This media features a slick polyester-rich surface, for exceptional back-pulse performance. These fibers form a visible "peachfuzz" surface, rivaling the performance of competitors' expensive laminated media.

The hydrophobic resin prevents swelling and pleat inconsistencies, which can increase flow restriction in rainy and/or humid environments. Also, because it is water-repellent, it can be washed for repeated use.



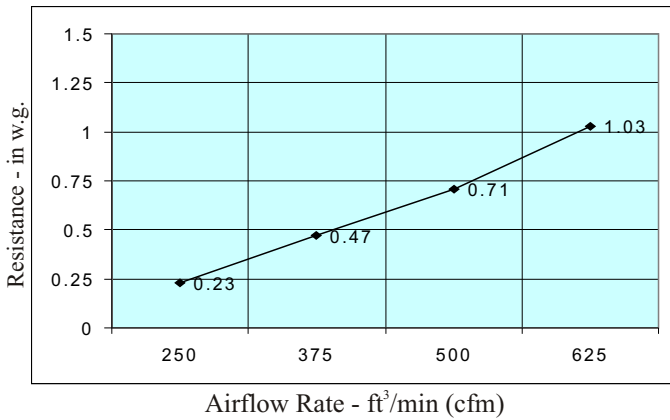
Dust Collector Media (500x)



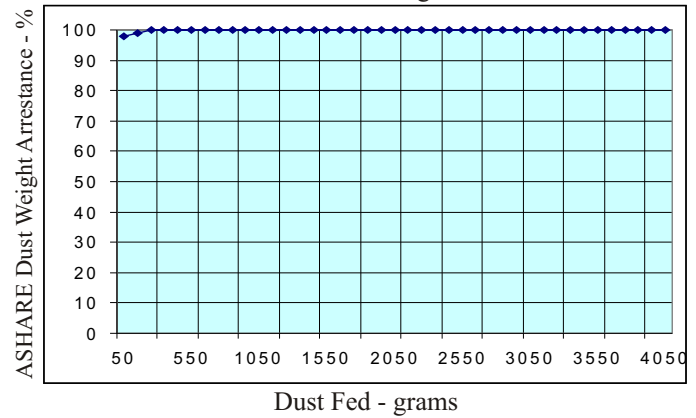
Polyester "peachfuzz" surface fibers

Independent Test Data Tests Performed on BEDC-1226-O/O PERFORMANCE CURVES

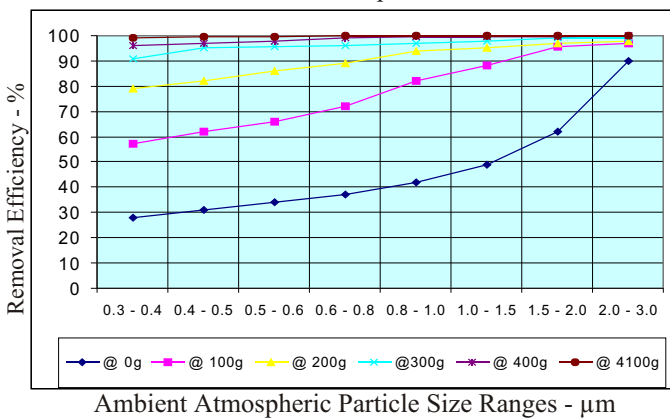
CLEAN DEVICE
Airflow -vs- Initial Resistance



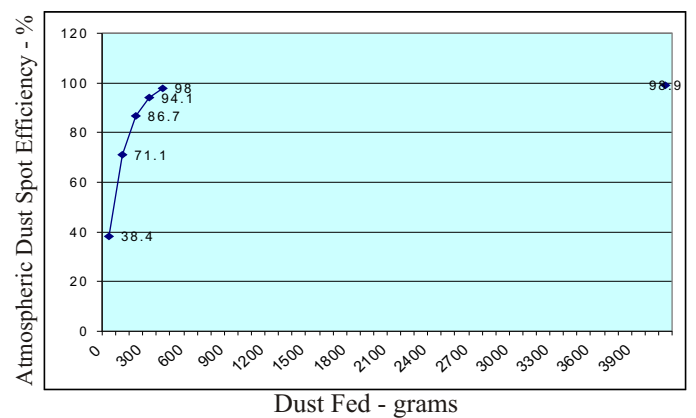
DUST FED -vs- ARRESTANCE
Dust Increment - 100g SAE Fine



PARTICLE SIZE -vs- REMOV. EFFICIENCY
Ambient Atmospheric Dust



DUST FED -vs- ATMOS. DUST SPOT EFFIC.
Dust Increment - 100g SAE Fine



Ordering Code

BEDC- ^{Table 1} _____ ^{Table 2} _____ ^{Table 3} / ^{Table 3} _____ ^{Table 4} _____

OD

Table 1

08	7.90" Dia.
09	9.00" Dia.
12	12.75" Dia.
14	13.84" Dia.
16	16.05" Dia.
18	17.60" Dia.

Length

Table 2

16	16.0"
22	22.0"
26	26.0"
28	28.0"
29	29.0"
30	30.0"
36	36.0"

Ends

Table 3

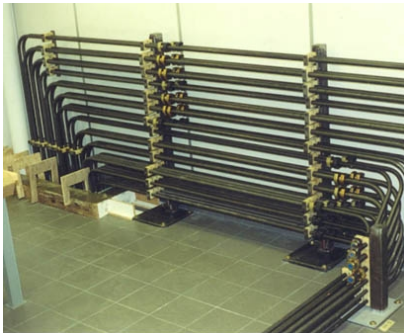
O	Open End
C	Closed End
CB	Closed End W/ Bolt Hole

Construction

Table 4

FR	Flame Retardant
NS	No Outer Screen
GB	Glue Beads on OD
10K	Farr-Style*
WS	Wheelabrator Style*
CONE	Conical Element

Other Behringer Products



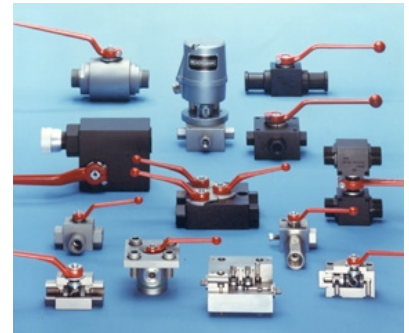
Industrial Pipe Clamps



Sanitary Pipe Clamps



Mahle Industrial Filters



Rötelmann Ball Valves



BEHRINGER Corporation

17 Ridge Road
 Branchville, NJ 07826
 Tel: +1 (973) 948-0226
 Fax: +1 (973) 948-2562
 web: www.behringersystems.com

Distributed By: